

GREASE INTERCEPTOR	
MARK NUMBER	GI 1 NOTES 1, 2.
SERVICE	MAIN FLOOR
CAPACITY (GPM)	100 GPM
GREASE (LB)	1,076 LBS
INLET/OUTLET PIPE SIZE	4"
DESIGN WEIGHT-WET (LBS)	2520 LBS
BASIS OF DESIGN	SCHIER GB-250
QTY	1

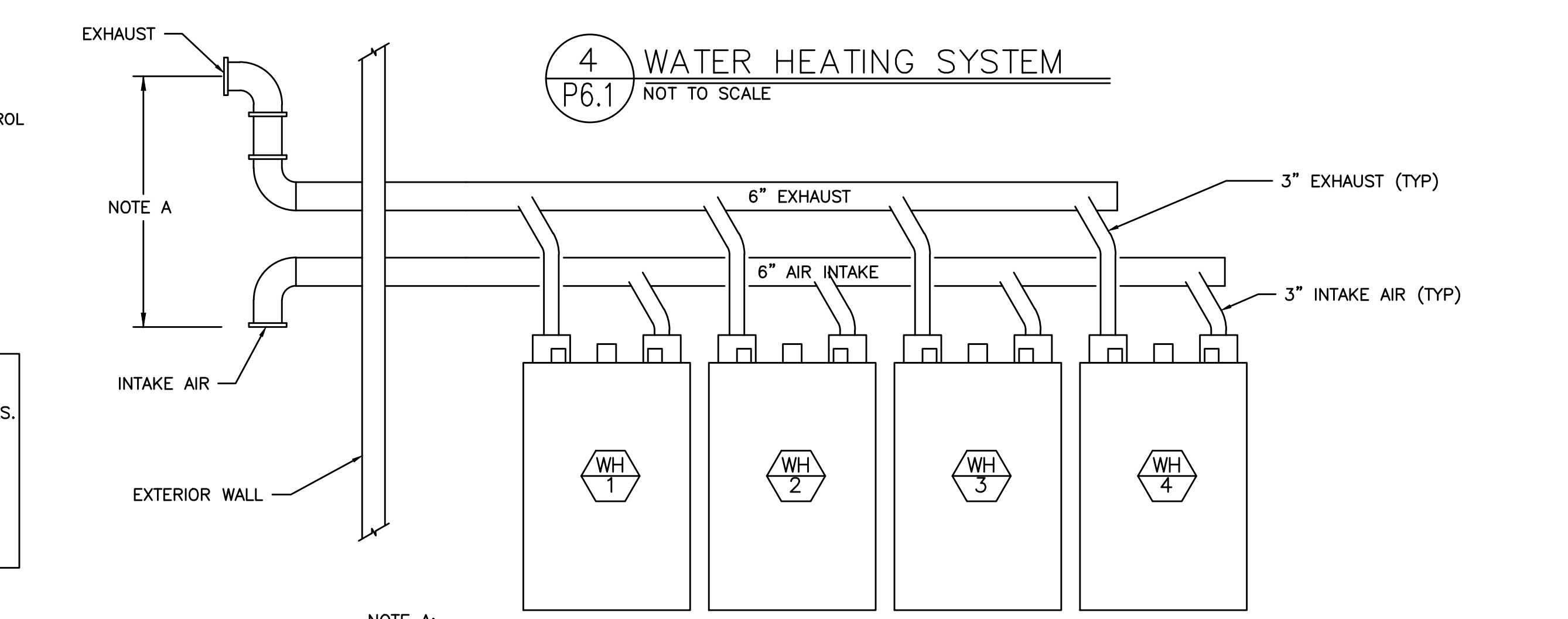
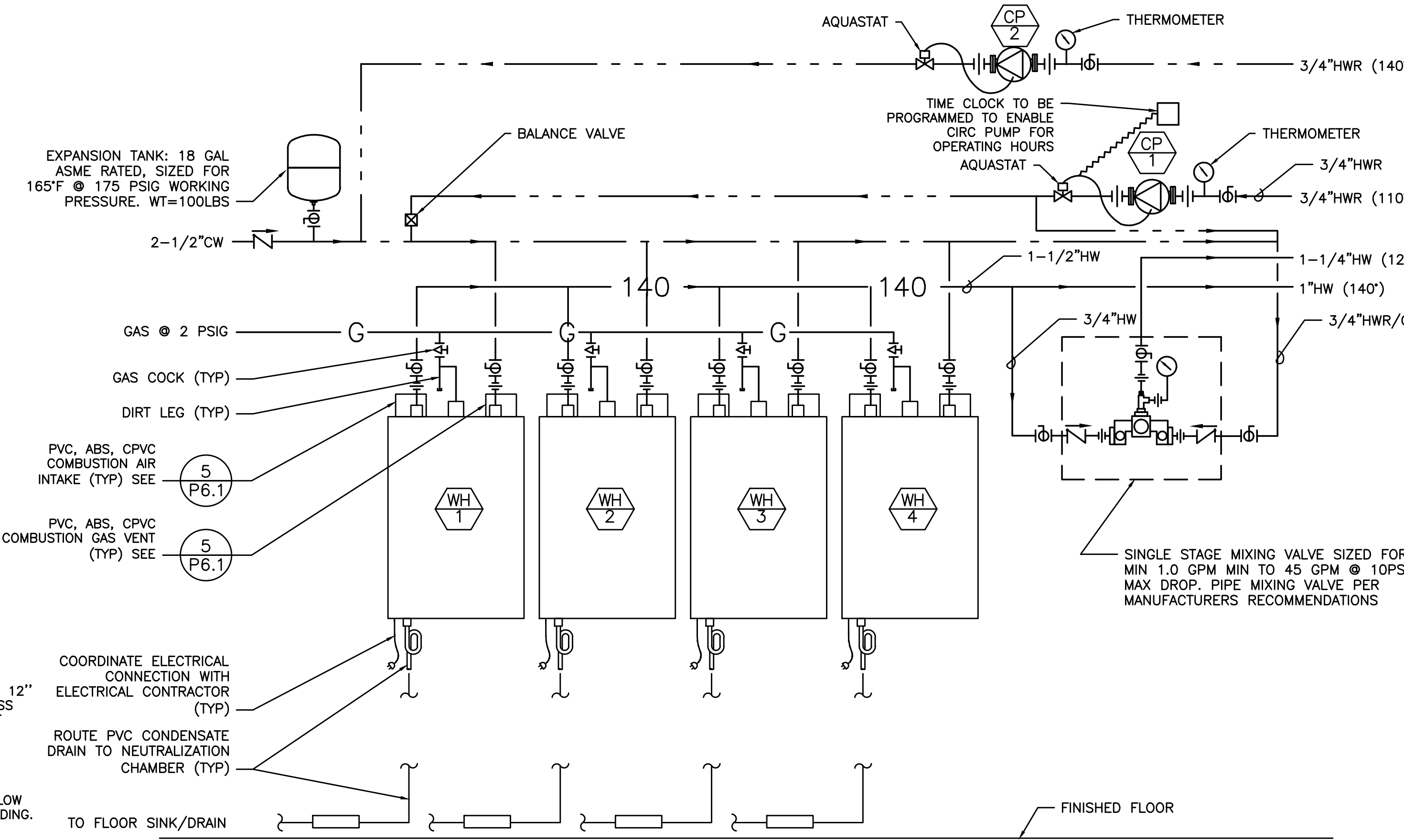
- NOTES:  
1. PROVIDE WITH SR24 TELEGLIDE RISER ADAPTER AND SV-24 SAMPLING PORT, IF REQUIRED BY CITY  
2. PROVIDE WITH BUILT IN FLOW CONTROL & BUILT IN TEST CAP

GAS WATER HEATERS-ESTIMATE				
MARK NUMBER	WH 1	WH 2	WH 3	WH 4
CAPACITY (GAL)	ON DEMAND	ON DEMAND	ON DEMAND	ON DEMAND
INPUT RATE (MBH)	199	199	199	199
OUTPUT RATE (MBH)	183	183	183	183
EFFICIENCY (%)	92%	92%	92%	92%
FUEL	NAT GAS	NAT GAS	NAT GAS	NAT GAS
CAPACITY (GPM) @ 90°F RISE	4.2	4.2	4.2	4.2
GAS VENT DIA. (INCHES)	3" PVC	3" PVC	3" PVC	3" PVC
COMBUSTION AIR INTAKE	3" PVC	3" PVC	3" PVC	3" PVC
DESIGN WEIGHT (LBS)	93	93	93	93
BASIS OF DESIGN: INTELLIHOT	i200	i200	i200	i200

PUMPS	
MARK NUMBER	CP 1
SERVICE	DHW RECIRC
TYPE	CIRC.
CONTROLLED BY	TIME CLOCK -*
ARRANGEMENT	IN-LINE
FLOW RATE (GPM)	25
HEAD (FT)	31
MOTOR HP	40 WATTS
RPM	---
DESIGN WEIGHT (LBS)	20

PUMPS	
MARK NUMBER	CP 2
SERVICE	DW RECIRC
TYPE	CIRC.
CONTROLLED BY	AQUASTAT
ARRANGEMENT	IN-LINE
FLOW RATE (GPM)	8.5
HEAD (FT)	6
MOTOR HP	40 WATTS
RPM	---
DESIGN WEIGHT (LBS)	20

\* - TIME CLOCK TO ENSURE CONTINUOUS FLOW WHEN BUILDING IS OCCUPIED - REQUIRED FOR MIXING VALVE TO FUNCTION PROPERLY



NOTE A:  
THE DISTANCE BETWEEN ANY GAS OUTLET AND AIR INTAKE PIPE SHALL BE 18-36 INCHES APART. SEE MANUFACTURERS INSTALLATION INSTRUCTIONS.

RECORD DRAWING:  
THIS DRAWING HAS BEEN UPDATED TO REFLECT CHANGES MADE TO PERMITS, CONSTRUCTION, AND/OR FIELD INFORMATION FURNISHED TO THE ENGINEER BY THE INSTALLATION CONTRACTOR. NO WARRANTY, EITHER EXPLICIT OR IMPLIED, IS GIVEN BY MEA, INC. AS TO THE ACCURACY AND/OR COMPLETENESS OF THIS INFORMATION.

AS-BUILT PREPARED 1.22.2020

**FOSTER SHELTER**  
6144 SE FOSTER RD., PORTLAND, OREGON 97206  
CLIENT: MULTNOMAH COUNTY



PROJECT NO. 17-0918 ISSUE DATE 05.04.2018  
REVISIONS:  
CHECKSHEET 5.23.2018  
OWNER CHANGES 2.26.2019

SHEET

PLUMBING  
DETAILS  
**P6.1**  
PERMIT SET  
© MERRYMAN BARNES ARCHITECTS, INC.