

**SHEET NOTES:**

- (A) CURVED SPECIALTY GRILLE WITH RADIUS TO MATCH DUCTWORK, SPIRAL DUCT MOUNTED DOUBLE DEFLECTION GRILLES, INDIVIDUALLY ADJUSTABLE BLADES WITH FRONT BLADES PARALLEL TO LONG DIMENSION. PROVIDE WITH AIR SCOOP DEVICE. MOUNT GRILLES AT A 0° ANGLE TITUS S300FS OR EQUAL.
- (B) 18X10 SUPPLY DUCT ROUTED BELOW BEAM, TRANSITION TO 14"Ø ROUND, AND UP AND HELD TIGHT TO BEAM. BOB AT 9'
- (C) (E) SUPPLY AND RETURN DUCTS UP THROUGH ROOF TO (E) RTUS, CONTRACTOR TO VERIFY EXACT SIZES AND LOCATIONS.
- (D) SUPPLY AND RETURN DUCTS UP THROUGH ROOF TO NEW RTUS, EXACT SIZE TO MATCH UNIT INTAKES AND DISCHARGES, SEE 1 M6.2
- (E) 14X14 EXH DUCT UP THROUGH ROOF TO EXHAUST FAN
- (F) ROUTE 14"Ø HOOD EXHAUSTS FROM EACH COLLAR UP THROUGH ROOF TO GREASE FANS, FIRE WRAP, OR USE DOUBLE WALL DUCT FOR SECTION BETWEEN CEILING AND ROOF STRUCTURE.
- (G) ROUTE 20X20 MUA FROM MUA UNIT ON ROOF DOWN TO FOUR 24X12 HOOD DUCT COLLARS.

**RECORD DRAWING:**  
 THIS DRAWING HAS BEEN UPDATED TO REFLECT CHANGES MADE TO THE PROJECT. THE CONTRACTOR SHALL VERIFY ALL INFORMATION FURNISHED TO THE ENGINEER BY THE INSTALLATION CONTRACTOR. NO WARRANTY IS GIVEN BY MEA, INC. AS TO THE ACCURACY AND/OR COMPLETENESS OF THIS INFORMATION.

AS-BUILT PREPARED 1.22.2020

**FOSTER SHELTER**  
 6144 SE FOSTER RD., PORTLAND, OREGON 97206  
 CLIENT: MULTNOMAH COUNTY

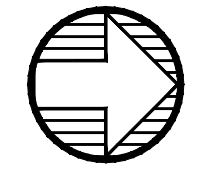
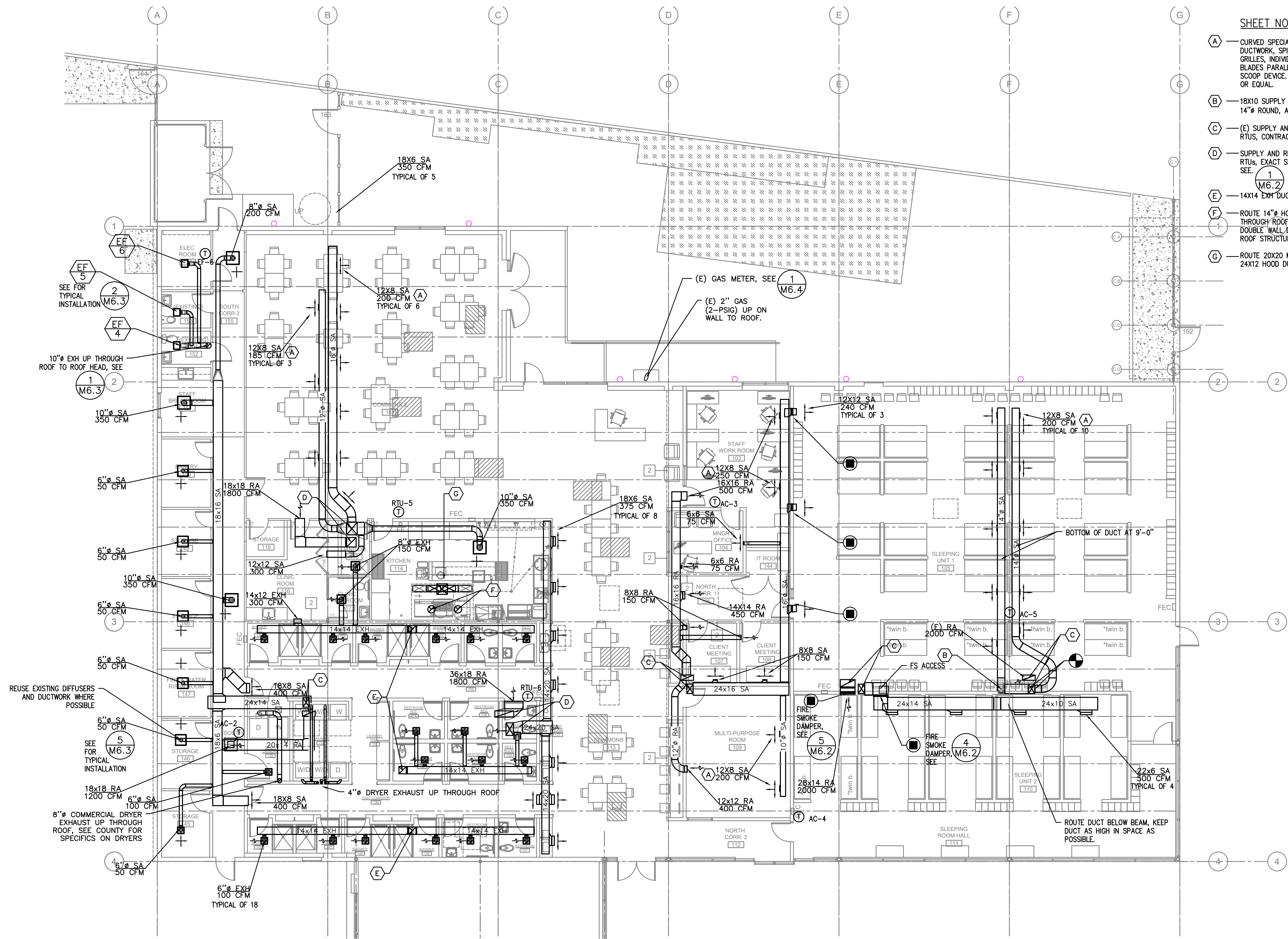


PROJECT NO. 17-0918	ISSUE DATE 05.04.2018
REVISIONS	
△	CHECKSHEET 5.23.2018
△	OWNER CHANGES 2.26.2019

SHEET

MECHANICAL  
FLOOR PLAN  
**M2.0**

PERMIT SET  
© MERRYMAN BARNES ARCHITECTS, INC.



**1** MECHANICAL FLOOR PLAN  
SCALE: 1/8" = 1'-0"

"AMERICAN MANUFACTURED IS PREFERRED"