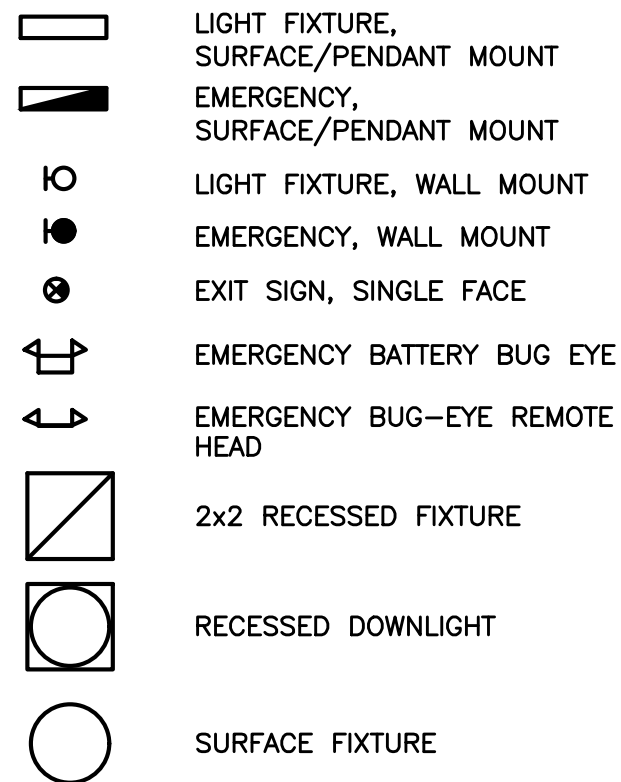
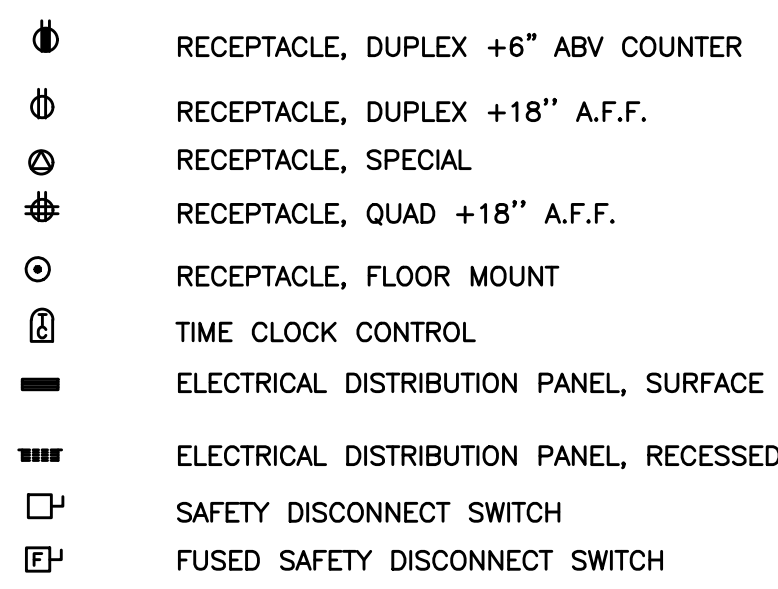


## ELECTRICAL SYMBOLS LIST

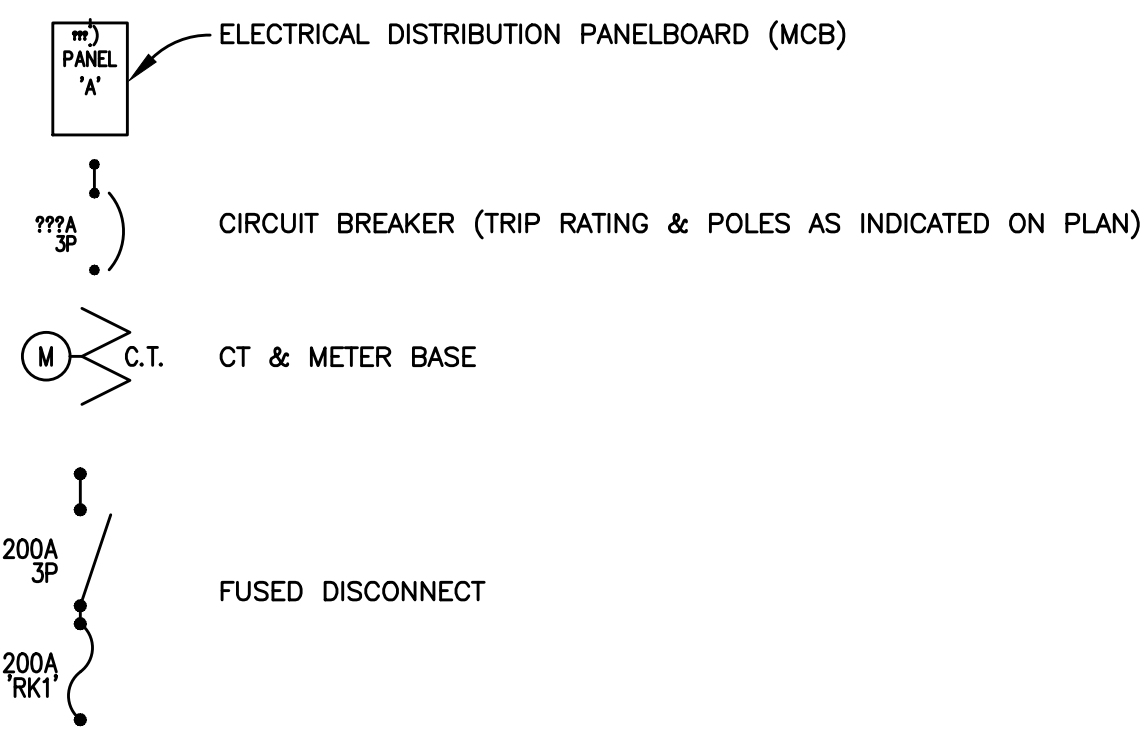
### LIGHTING SYMBOLS



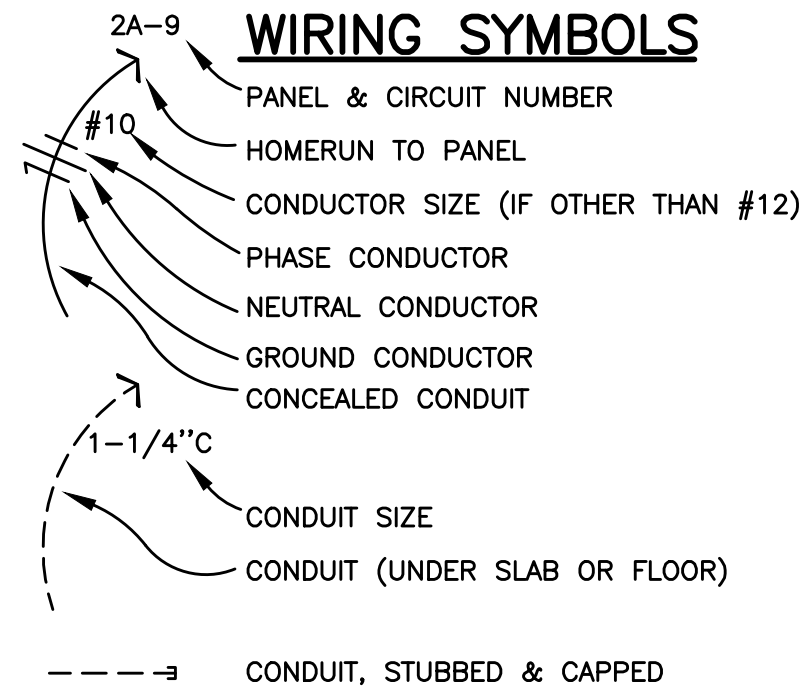
### POWER SYMBOLS



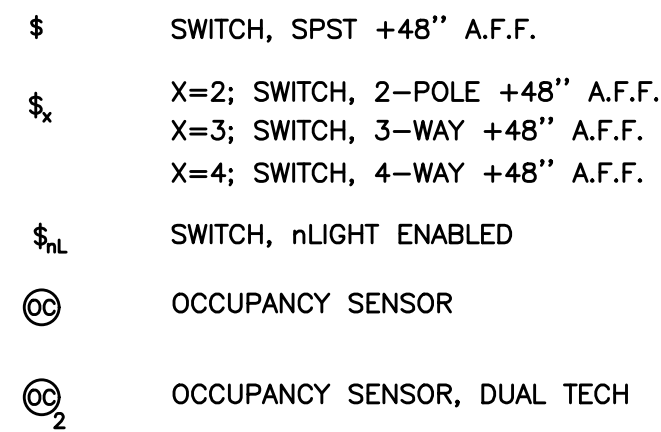
### ONE-LINE DIAGRAM SYMBOLS



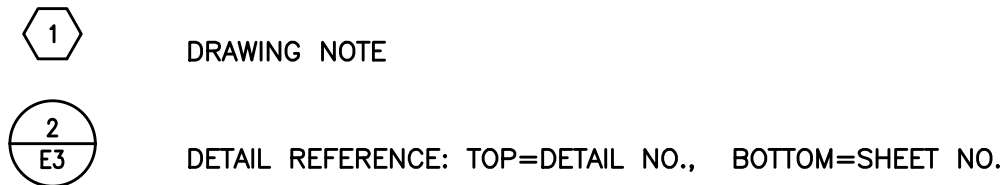
### WIRING SYMBOLS



### SWITCH SYMBOLS



### NOTATIONS



### ABBREVIATIONS

'A'	LIGHT FIXTURE TYPE (SEE FIXTURE LIST)
CU	COPPER
G.F.I.	GROUND FAULT INTERRUPTER
GND	GROUND
MCB	MAIN CIRCUIT BREAKER
MLO	MAIN LUGS ONLY
PH	PHASE
W.P.	WEATHERPROOF
A.F.I	ARC FLASH INTERRUPTER
A.F.F	ABOVE FINISHED FLOOR

### SHEET NOTES:

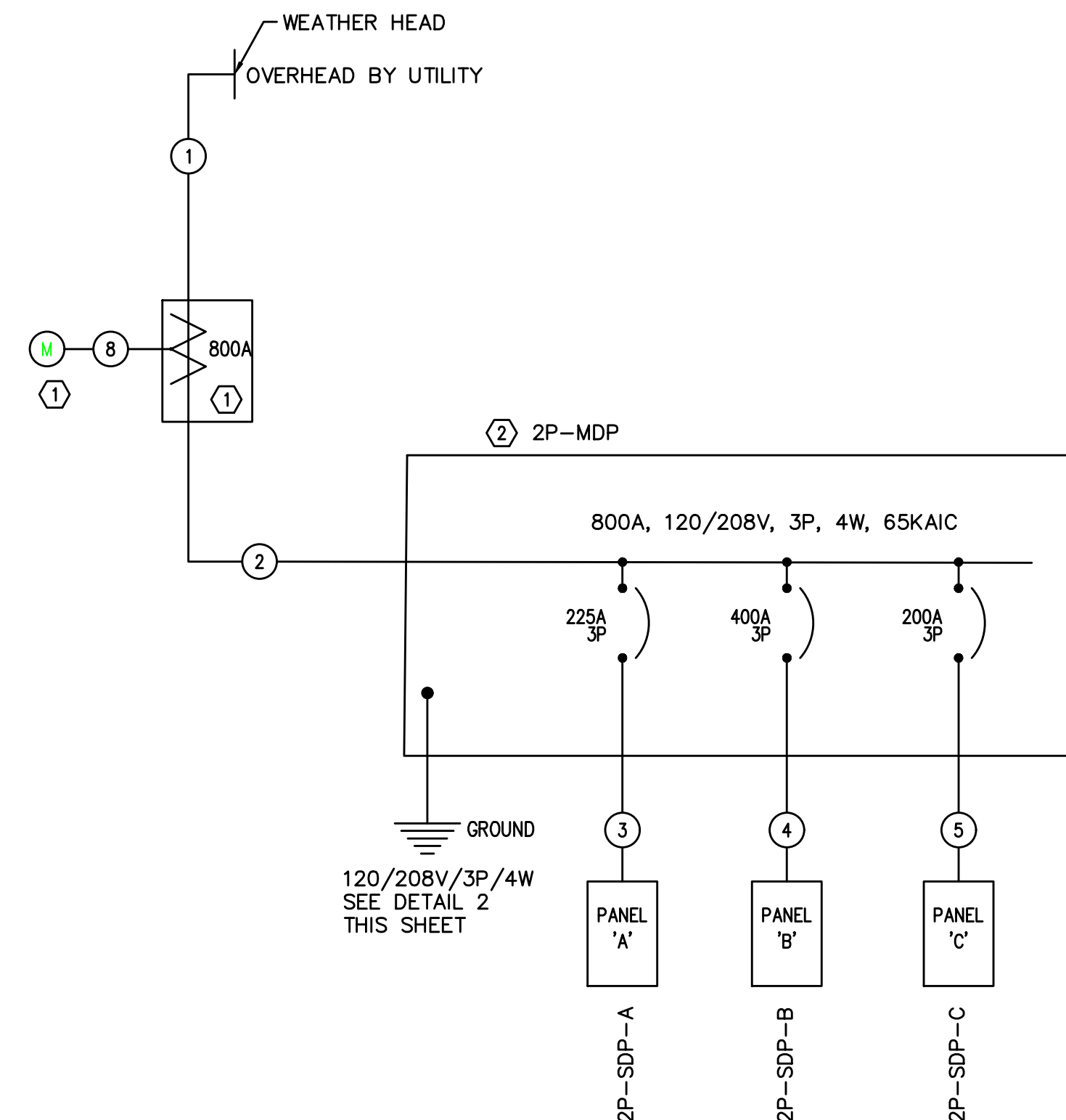
- ① PROVIDE CT ENCLOSURE AND METER BASE PER UTILITY.
- ② PROVIDE MDP WITH RATING SHOWN.

### FEEDER/CONTROL SCHEDULE

TAG NO.	FROM	TO	CONDUIT	CONDUCTORS (COPPER)	NOTES
1	WEATHER HEADS	CURRENT TRANSFORMER	(2) 4" EACH W/	4#600 KCM	
2	CT	MDP	(2) 4" EACH W/	4#600 KCM, 1#3/0 GND	
3	MDP	PANEL 'A'	2-1/2"	4#4/0, 1#4 GND	
4	MDP	PANEL 'B'	4"	4#600, 1#2 GND	
5	MDP	PANEL 'C'	2"	4#3/0, 1#6 GND	
8	CT	METER BASE	1-1/4"	UTILITY TO PROVIDE	

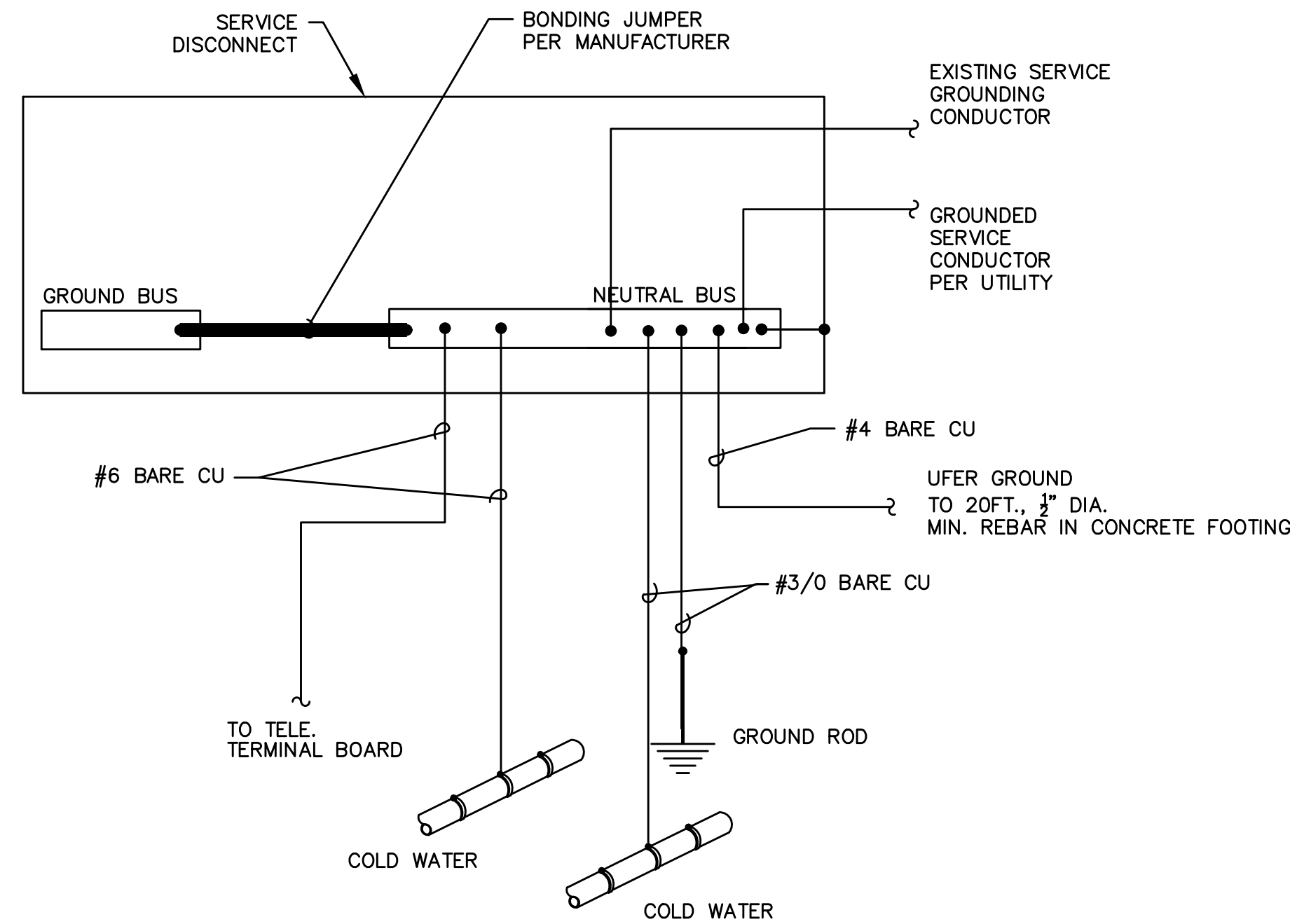
### 3 FEEDER SCHEDULE

E1.1 SCALE:



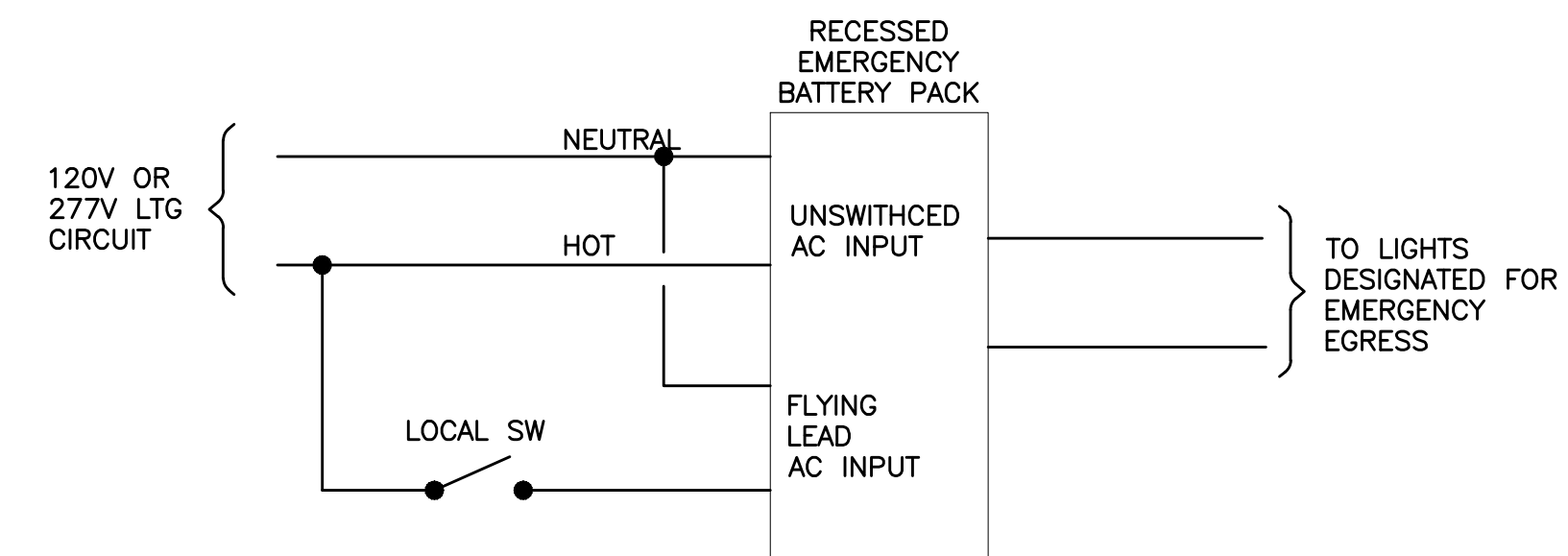
### 1 ELECTRICAL ONE-LINE

E1.1 SCALE: NTS



### 2 GROUNDING DETAILS

E1.1 SCALE:



### 3 EMERGENCY EGRESS LIGHTING- SWITCHED

E1.1 SCALE: NTS

**RECORD DRAWING:**  
 THIS DRAWING HAS BEEN UPDATED TO REFLECT CHANGES MADE DURING CONSTRUCTION BASED UPON INFORMATION FURNISHED TO THE ENGINEER BY THE INSTALLATION CONTRACTOR. NO WARRANTY, EITHER EXPRESSED OR IMPLIED, IS GIVEN BY MERRYMAN BARNES ARCHITECTS, INC. AS TO THE ACCURACY AND/OR COMPLETENESS OF THIS INFORMATION.

AS-BUILT PREPARED 1.22.2020

**FOSTER SHELTER**  
 6144 SE FOSTER RD, PORTLAND, OREGON 97206  
 CLIENT: MULTNOMAH COUNTY



PROJECT NO.	ISSUE DATE
17-0918	05.04.2018
REVISIONS	CHECKSHEET 5.23.2018
	OWNER CHANGES 2.26.2019

SHEET

LEGEND, ONE-LINE, SCHEDULE, DETAILS

# E1.1

PERMIT SET

© MERRYMAN BARNES ARCHITECTS, INC.