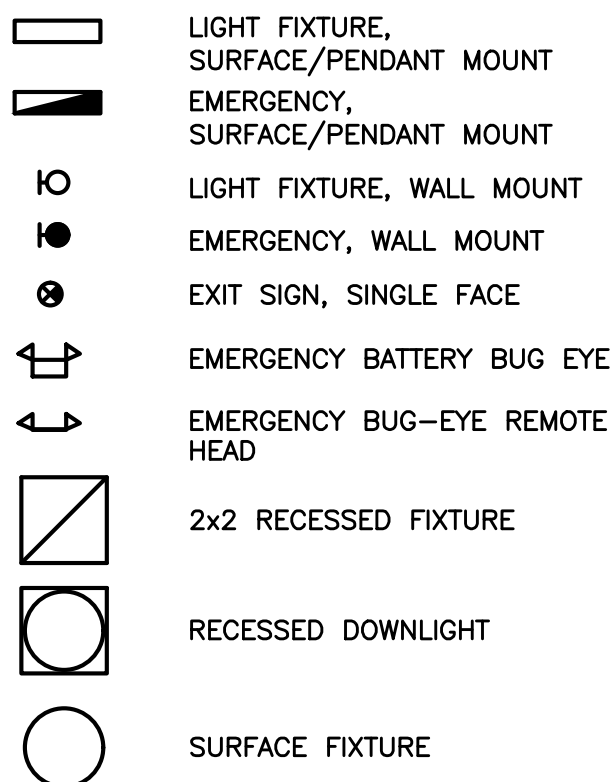
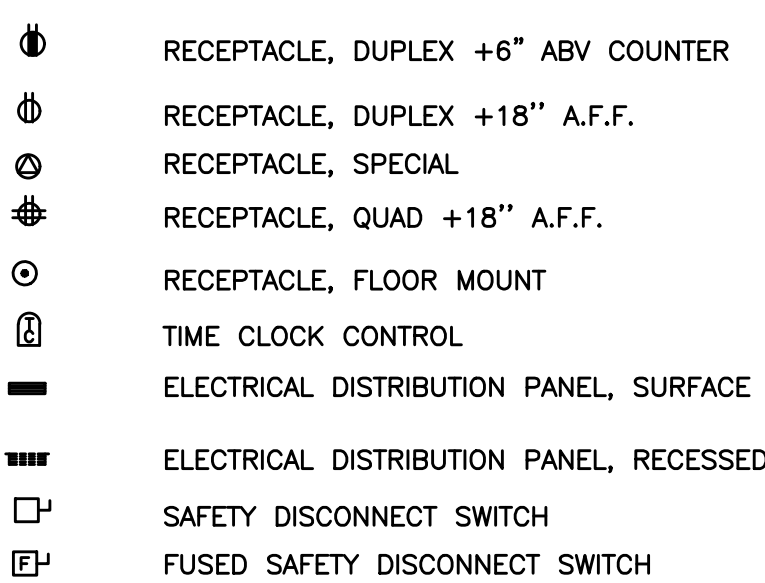


ELECTRICAL SYMBOLS LIST

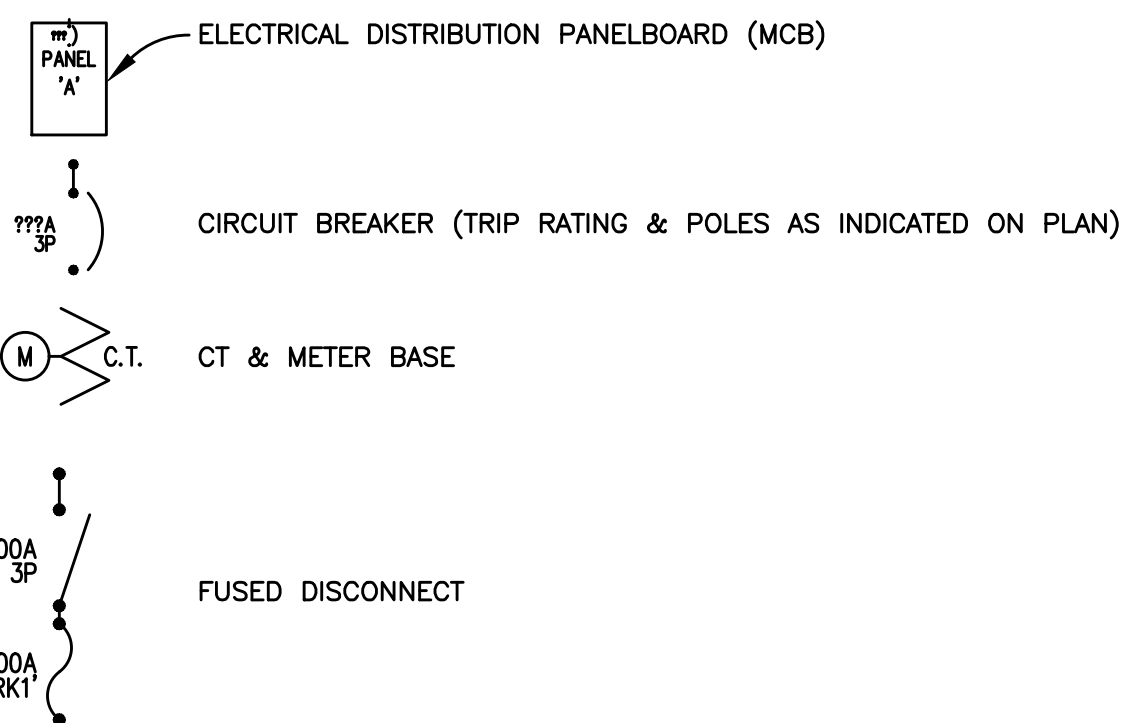
LIGHTING SYMBOLS



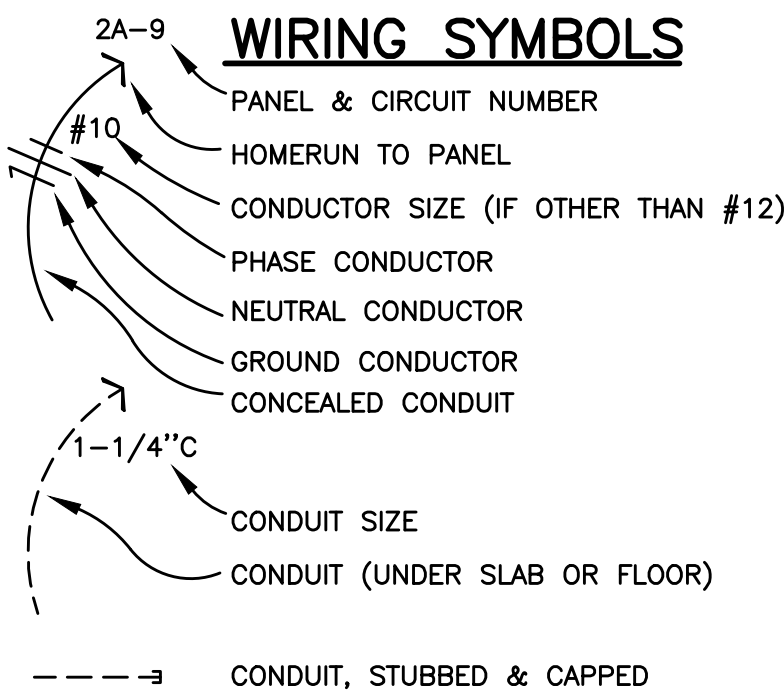
POWER SYMBOLS



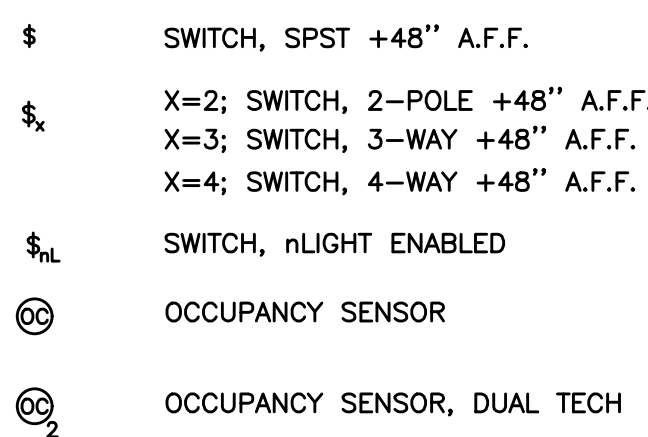
ONE-LINE DIAGRAM SYMBOLS



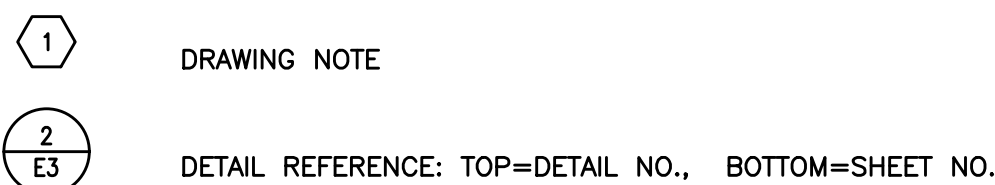
WIRING SYMBOLS



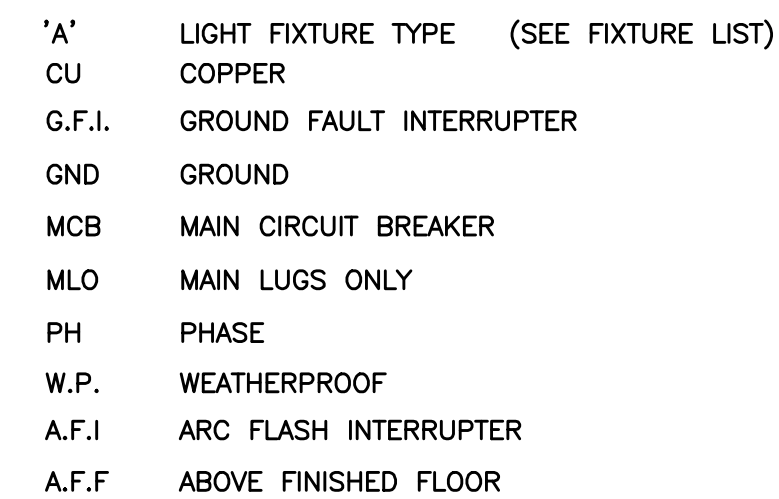
SWITCH SYMBOLS



NOTATIONS



ABBREVIATIONS



SHEET NOTES:

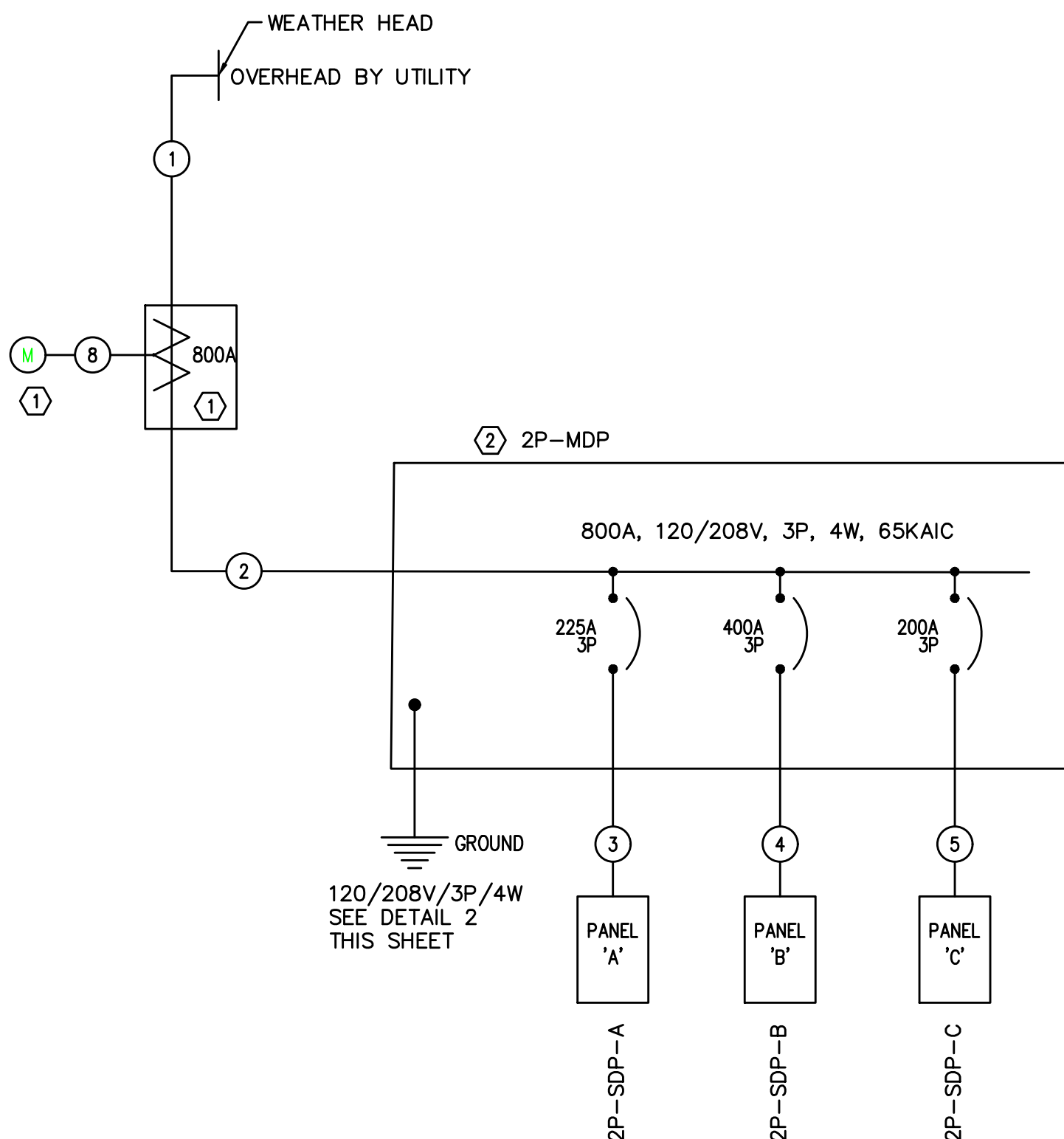
- PROVIDE CT ENCLOSURE AND METER BASE PER UTILITY.
- PROVIDE MDP WITH RATING SHOWN.

FEEDER/CONTROL SCHEDULE

TAG NO.	FROM	TO	CONDUIT	CONDUCTORS (COPPER)	NOTES
1	WEATHER HEADS	CURRENT TRANSFORMER	(2) 4" EACH W/	4#600 KCM	
2	CT	MDP	(2) 4" EACH W/	4#600 KCM, 1#3/0 GND	
3	MDP	PANEL 'A'	2-1/2"	4#4/0, 1#4 GND	
4	MDP	PANEL 'B'	4"	4#600, 1#2 GND	
5	MDP	PANEL 'C'	2"	4#3/0, 1#6 GND	
8	CT	METER BASE	1-1/4"	UTILITY TO PROVIDE	

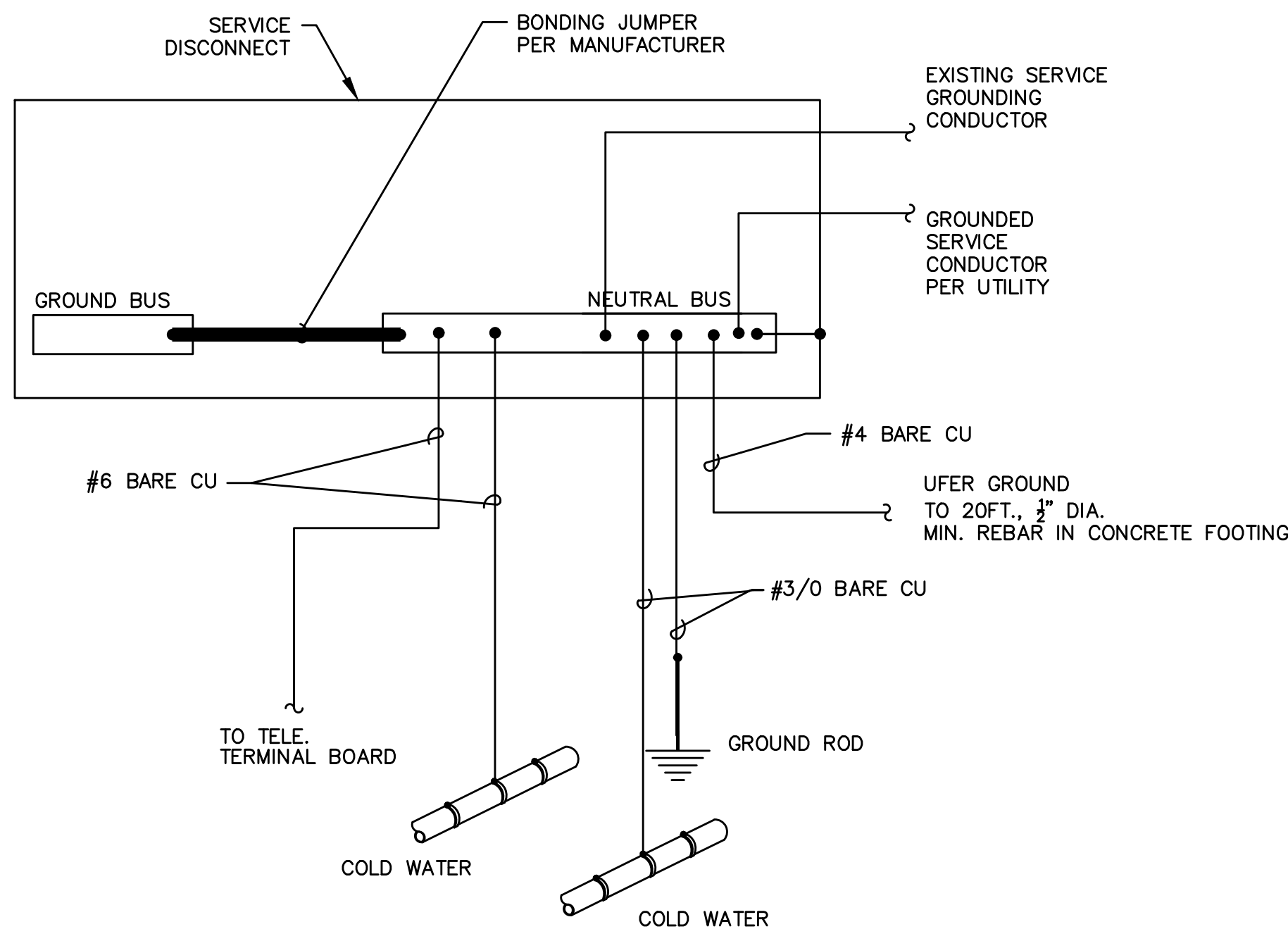
3 FEEDER SCHEDULE

SCALE:



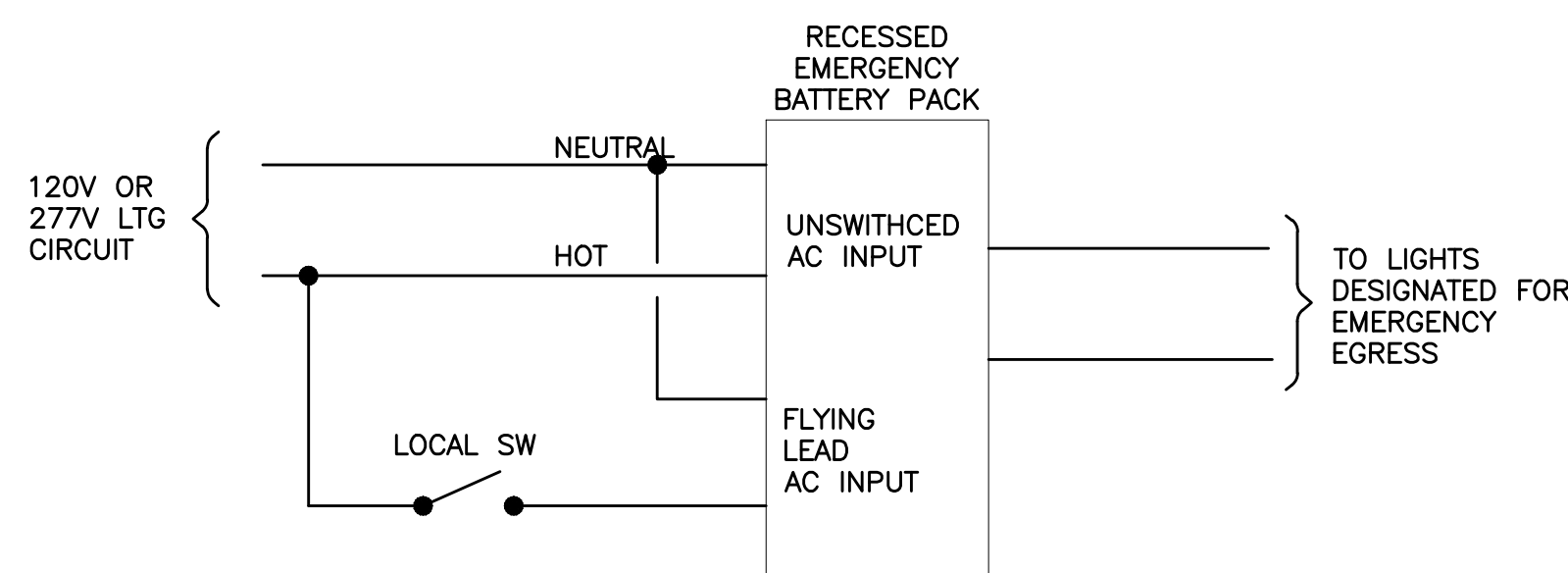
1 ELECTRICAL ONE-LINE

SCALE: NTS



2 GROUNDING DETAILS

SCALE:



3 EMERGENCY EGRESS LIGHTING- SWITCHED

SCALE: NTS

FOSTER SHELTER

6144 SE FOSTER RD, PORTLAND, OREGON 97206
CLIENT: MULTNOMAH COUNTY

PROJECT NO. 17-0918
ISSUE DATE 05.04.2018
REVISIONS
CHECKSHEET 5.23.2018
OWNER CHANGES 2.26.2019

SHEET

LEGEND, ONE-LINE,
SCHEDULE, DETAILS

E1.1

PERMIT SET

© MERRYMAN BARNES ARCHITECTS, INC.

RECORD DRAWING:

THIS DRAWING HAS BEEN UPDATED TO REFLECT CHANGES MADE DURING CONSTRUCTION BASED UPON INFORMATION FURNISHED TO THE ENGINEER BY THE INSTALLATION CONTRACTOR. NO WARRANTY EITHER EXPLICIT OR IMPLIED IS GIVEN BY MBIA, INC. AS TO THE ACCURACY AND/OR COMPLETENESS OF THIS INFORMATION.

AS-BUILT PREPARED 1.22.2020

MERRYMAN BARNES ARCHITECTS 4713 N ALBINA AVE, SUITE 304 PORTLAND, OREGON 97217 P 503.222.3793

MBA

2/27/2020 11:54:50 AM

LIGHTING FIXTURE SCHEDULE						1/27/2020
TYPE	LAMP	MANUFACTURER	CATALOG NUMBER	DESCRIPTION	OPTIONS	
B	LED 53 DGREE BEAM 4000K, 85CRI 635 LUMENS	WAC, OR APPROVED	HR, L4R OR APPROVED	TYPE: DOWNLIGHT MOUNTING: RECESSED HOUSING: DIE-CAST ALUMINUM LENS/REFL: GLASS LENS VOLTAGE: 120V BALLAST: 0-10V DIMMING	PROVIDE WITH:	
	21.5W					
C	LED 3500K 3200 LUMENS	WAC OR APPROVED	WP-LED354 OR APPROVED	TYPE: DIRECTIONAL FLOOD LIGHT MOUNTING: SURFACE HOUSING: DIE-CAST ALUMINUM LENS/REFL: 120V VOLTAGE: 120V BALLAST: ELV DIMMER	PROVIDE WITH: SURFACE MOUNT JUNCTION BOX MOTION DETECTOR CONTROLLED DIMMING WET LOCATION RATED	
	53W					
D3	LED 4000 LUMENS 4000K	LITHONIA, PHILIPS OR APPROVED	2TLX2, 2SML OR APPROVED	TYPE: 2 x 2 MOUNTING: SURFACE HOUSING: STEEL LENS/REFL: A19 VOLTAGE: MVOLT BALLAST: 0-10V DIMMING	PROVIDE WITH:	
	40W					
E	LED	EXITRONIX OR APPROVED	LED-90 SERIES	TYPE: EMERGENCY LIGHT MOUNTING: SURFACE HOUSING: THERMOPLASTIC LENS/REFL: 120V VOLTAGE: 120V BALLAST:	PROVIDE WITH: SELF DIAGNOSTIC WET LOCATION RATED WHERE REQUIRED	
	3W					
EXMG	LED	LITHONIA, TELESIS OR APPROVED	ECR HO M6 TCXCOM OR APPROVED	TYPE: EXIT UNIT COMBO MOUNTING: TOP, BACK OR END MOUNTING HOUSING: THERMOPLASTIC HOUSING LENS/REFL: 120V VOLTAGE: 120V BALLAST:	PROVIDE WITH: HIGH OUTPUT WEATHER PROOF REMOTE LAMPS	
	4W					
EXT	LED	TELESIS, LITHONIA OR APPROVED	TLX, LQM OR APPROVED	TYPE: EXIT SIGN MOUNTING: SURFACE, PENDANT HOUSING: THERMOPLASTIC LENS/REFL: 120V VOLTAGE: 120V BALLAST:	PROVIDE WITH: STEMKITS WHERE REQUIRED RED SELF DIAGNOSTIC NICKEL CADMIUM BATTERY	
	2W					
EXT2	LED	TELESIS, LITHONIA OR APPROVED	TWL, WLTE OR APPROVED	TYPE: WET LOCATION EXIT SIGN MOUNTING: BACK HOUSING: THERMOPLASTIC LENS/REFL: 120V VOLTAGE: 120V BALLAST:	PROVIDE WITH: RED WHITE HOUSING TAMPER RESISTANT SCREW SELF DIAGNOSTIC	
	4W					
F	INCANDESCENT OR LED	MILLENNIUM OR APPROVED	5301 RBC OR APPROVED 11" HEIGHT, 10" WIDE SHADE	TYPE: INDUSTRIAL DOWN LIGHT MOUNTING: PENDANT, STEM MOUNTED HOUSING: METAL LENS/REFL: VOLTAGE: 120V BALLAST:	PROVIDE WITH: FULL SIZE SHADE WITH A CAGE OR GUARD 100W OR MORE EQUIVALENT LUMEN OUTPUT A19 SHAPE LED BULB WITH MEDIUM (E26) BASE	
	100W					
G	LED 4000K 4000 LUMENS	MAXLITE OR APPROVED	LSV SERIES OR APPROVED	TYPE: PARKING LIGHT MOUNTING: SURFACE HOUSING: POLYCARBONATE LENS/REFL: CLEAR LENSES VOLTAGE: MVOLT BALLAST:	PROVIDE WITH: INTEGRAL OCCUPANCY SENSOR CONTROL OFF MOUNTING ACCESSORIES TO CANOPY ROOF RAFTER 48" FIXTURE LENGTH WET LOCATION RATED	
	50W					
H	LED 1500LUMENS 3000K	LITHONIA, PHILIPS OR APPROVED	WST, 111L16 OR APPROVED	TYPE: WALL SCONCE MOUNTING: WALL MOUNT, SURFACE MOUNT HOUSING: DIE-CAST ALUMINUM LENS/REFL: VOLTAGE: MVOLT BALLAST:	PROVIDE WITH: EMERGENCY BATTERY PACK CEC COMPLIANT TYPE III DISTRIBUTION SURFACE-MOUNTED BACK BOX, VANDAL GUARD INTEGRAL MOTION SENSOR MOUNTING ACCESSORIES TO ROOF RAFTER WHERE REQUIRED	
	11W					
J	LED 4000 LUMENS 4000K	MAXLITE OR APPROVED	LS SERIES OR APPROVED	TYPE: STRIP LIGHT MOUNTING: SURFACE HOUSING: LENS/REFL: VOLTAGE: MVOLT BALLAST:	PROVIDE WITH: 48" FIXTURE LENGTH	
	40W					
K	LED 2000 LUMENS 3000K, 90CRI	LITHONIA, PHILIPS OR APPROVED	DMW2, V3W OR APPROVED	TYPE: STRIP LIGHT MOUNTING: PENDANT, SURFACE HOUSING: FIBERGLASS LENS/REFL: POLYCARBONATE VOLTAGE: MVOLT BALLAST: 0-10V DIMMING	PROVIDE WITH: 24" FIXTURE LENGTH EMERGENCY BATTERY PACK CEC COMPLIANT MOTION SENSOR TAMPER RESISTANT SCREW STAINLESS STEEL LATCHES MOUNTING ACCESSORIES	
	20W					
L1	LED 4000K 90CRI 1100 LUMENS	LITHONIA OR APPROVED	6BP SERIES OR APPROVED	TYPE: DOWNLIGHT MOUNTING: RECESSED HOUSING: ALUMINUM LENS/REFL: DIFFUSED LENS VOLTAGE: 120V BALLAST: 0-10V DIMMING	PROVIDE WITH:	
	20W					
M	LED 4000K	ALCON OR APPROVED	11141-4-W OR APPROVED	TYPE: LINEAR DIRECT ASYMMETRIC DOWN LIGHT MOUNTING: WALL HOUSING: STEELE LENS/REFL: SNAP IN FROSTED ACRYLIC VOLTAGE: MVOLT BALLAST:	PROVIDE WITH: EMERGENCY BATTERY PACK CEC COMPLIANT WHERE SHOWN AS 'EMG'	
	2500 LUMENS					
W	LED 2600LUMENS 4000K	MAXLITE OR APPROVED	LS SERIES 24" OR APPROVED	TYPE: UTILITY WRAP MOUNTING: SURFACE MOUNT HOUSING: STEEL LENS/REFL: VOLTAGE: MVOLT BALLAST: 0-10V DIMMING	PROVIDE WITH;	
	26W					

1

E1.6

LIGHTING SCHEDULE

SCALE: NA

EQUIPMENT ELECTRICAL SCHEDULE										27-Jan-20
MARK NO.	EQUIPMENT NAME	HP/KW	VOLTS	PH	AMPS	CONDUIT	WIRE	GND	CIRCUIT	NOTES
EF-1	SH&RR EXHAUST FAN	1/6 HP	120	1	4.4	3/4"	2#10	#10	A-13	
EF-2	SH&RR EXHAUST FAN	1/6 HP	120	1	4.4	3/4"	2#12	#12	A-15	
EF-3	SH&RR EXHAUST FAN	1/2 HP	120	1	9.8	3/4"	2#8	#8	A-17	
EF-4	STAFF RR EXHAUST FAN	5 W	120	1		3/4"	2#12	#12	B-33	PROVIDE A WALL SWITCH
EF-5	STAFF RR EXHAUST FAN	11.7 W	120	1		3/4"	2#12	#12	B-33	PROVIDE A WALL SWITCH
EF-6	ELEC RM EXHAUST FAN	47.3W	120	1		3/4"	2#12	#12	A-11	T-STAT CONTROLLED
AC-2	EXISTING RTU		208	3	35	1"	4#6	#10	A-8,10,12	VIA EXISTING DISCONNECT
AC-4	EXISTING RTU		208	3	35	1"	4#6	#10	A-2,4,6	VIA EXISTING DISCONNECT
AC-3	EXISTING RTU		208	1	44.1	1"	3#4	#8	B-13,15	VIA EXISTING DISCONNECT
AC-5	EXISTING RTU		208	1	44.1	1"	3#4	#8	B-43,45	VIA EXISTING DISCONNECT
RTU-5	NEW RTU		208	3	37	1"	4#6	#10	B-2,4,6	
RTU-6	NEW RTU		208	3	40	1-1/4"	4#6	#10	A-1,3,5	
	COINED WD/STACK (WASHER)		120	1	5.6	3/4"	2#10	#10	B-8	
	COINED WD/STACK (DRYER)		208	1	23	3/4"	3#8	#8	B-10,12	
	COINED WD/STACK (WASHER)		120	1	5.6	3/4"	2#10	#10	B-14	
	COINED WD/STACK (DRYER)		208	1	23	3/4"	3#8	#8	B-16,18	
	COINED WD/STACK (WASHER)		120	1	5.6	3/4"	2#10	#10	B-51	
	COINED WD/STACK (DRYER)		208	1	23	3/4"	3#8	#8	B-47,49	
	COINED WD/STACK (WASHER)		120	1	5.6	3/4"	2#10	#10	A-14	
	COINED WD/STACK (DRYER)		208	1	23	3/4"	3#8	#8	A-16,18	
	COINED DRYER		208	1	23	3/4"	3#8	#8	A-34,36	
	COINED WASHER		120	1	5.6	3/4"	2#10	#10	A-32	
	WASHER EXTRACTOR		208	3	16	3/4"	4#8	#8	B-1,3,5	
	TUMBLER DRYER		208	3	79	1-1/4"	4#1	#8	B-7,9,11	
CP-1	RECIRC PUMP		120	1	3	3/4"	2#12	#12	B-21	
CP-2	RECIRC PUMP		120	1	3	3/4"	2#12	#12	B-21	
WH-1	WATER HEATER		120	1	4	3/4"	2#12	#12	B-25	
WH-2	WATER HEATER		120	1	4	3/4"	2#12	#12	B-27	
WH-3	WATER HEATER		120	1	4	3/4"	2#12	#12	B-29	
WH-4	WATER HEATER		120	1	4	3/4"	2#12	#12	B-31	
	FIRE SMOKE DAMPERS (AC-3)		120	1		3/4"	2#10	#10	C-11	
	FIRE SMOKE DAMPERS (AC-4)		120	1		3/4"	2#10	#10	C-11	
	FIRE ALARM PANEL		120	1		3/4"	2#10	#10	C-17	
MAU-1	MAKE-UP AIR UNIT		208	3	6.1	3/4"	4#10	#10	C-8,10,12	VIA VFD IN KITCHEN HOOD CONTROL PANEL
KEX-1	KITCHEN LEFT EXHAUST		208	1	5.2	3/4"	3#10	#10	C-14,16	
KEX-2	KITCHEN RIGHT EXHAUST		208	1	5.2	3/4"	3#10	#10	C-20,22	

2

E1.6

EQUIPMENT SCHEDULE

SCALE: NA

FOSTER SHELTER

6144 SE FOSTER RD, PORTLAND, OREGON 97206

CLIENT: MULTNOMAH COUNTY

PROJECT NO. 17-0918

ISSUE DATE 05.04.2018

REVISIONS

CHECKSHEET 5.23.2018

OWNER CHANGES 2.26.2019

SHEET

ELECTRICAL SCHEDULES

E1.6

PERMIT SET

© MERRYMAN BARNES ARCHITECTS, INC.

RECORD DRAWING:

THIS DRAWING HAS BEEN UPDATED TO REFLECT CHANGES MADE DURING CONSTRUCTION BASED UPON INFORMATION FURNISHED TO THE ENGINEER BY THE INSTALLATION CONTRACTOR. NO WARRANTY, EITHER EXPLICIT OR IMPLIED, IS GIVEN BY MBFA, INC. AS TO THE ACCURACY AND/OR COMPLETENESS OF THIS INFORMATION.

AS-BUILT PREPARED 1.22.2020

MBA

MERRYMAN BARNES ARCHITECTS 4713 N ALBINA AVE, SUITE 304 PORTLAND, OREGON 97217 P 503.222.3793

FOSTER SHELTER								1/27/2020
MDP, 800A, 208Y/120V,3P,4W								
LOAD:	LIGHTS	RECEPT	HEAT	KITCHEN	EQUIP	MOTORS	MISC	LARGEST MOTOR
PANEL A	5,945	1,440	0	0	11,420	43,856	3,600	4,900
PANEL B	3,616	17,285	0	0	55,963	27,377	0	5,990
PANEL C	650	4,800	0	29,201	8,472	4,363	1,200	2,199
SUBTOTAL	10,211	23,525	0	29,201	75,855	75,596	4,800	13,089
X-FACTOR	1.25	1 + .5	1	0.65	1	1	1	0.25
CODE LOAD:	12,764	16,763	0	18,981	75,855	75,596	4,800	3,272
CONN LOAD:		219	KVA					
VOLTS:		208	3ph					
TOTAL CALC:		208	KVA					
CALC AMPS:		577	AMPS					

1

E1.7

PANEL MDP SCHEDULE

SCALE: NA

MFIA PANEL SCHEDULE														
panel B			mounting WALL			location			connected load amps 290					
voltage 120/208V			phase 3		bus & main 400A MLO				calculated load amps 286					
C	service	va	a/p	no.	a b c	no.	a/p	va	service	C				
6	WASHER EXTRACTOR	1922	20/3	1	*	2	50/3	3243	RTU-5	6				
6	*	1922	*	3	*	4	*	3243	*	6				
6	*	1922	*	5	*	6	*	3243	*	6				
5	TUMBLER DRYER	9487	100/3	7	*	8	15/1	670	W/D STACK (WASHER)	6				
5	*	9487	*	9	*	10	30/2	2375	W/D STACK (DRYER)	5				
5	*	9487	*	11	*	12	*	2375	*	5				
5	RTU #3	4586	60/2	13	*	14	15/1	670	W/D STACK (WASHER)	6				
5	*	4586	*	15	*	16	30/2	2375	W/D STACK (DRYER)	5				
	SPARE		15/2	17	*	18	*	2375	*	5				
	*		*	19	*	20	20/1		DINING PLUGS	5				
6	RECIRC PUMPS	700	15/1	21	*	22	20/1		SPARE					
5	ADA DOOR ACTR PWR (2 DRs)	900	20/1	23	*	24	20/1		SPARE					
5	WH-1	75	15/1	25	*	26	20/1	540	ROOFTOP RECEPTACLES	2				
5	WH-2	75	15/1	27	*	28	15/1	1440	COMMON 1 OUTLETS	5				
5	WH-3	75	15/1	29	*	30	15/1	1440	COMMON 1 OUTLETS	5				
5	WH-4	75	15/1	31	*	32	15/1	670	COIN WASHER	6				
1	STORAGE AND RR LIGHTS	700	20/1	33	*	34	20/1		SPARE					
1	CORRIDOR(155+143),ELEC RM LTS	800	20/1	35	*	36	20/1	1440	RECEPTACLES	2				
1	CLINIC+RR+SH+LAUN LTS	820	20/1	37	*	38	20/1	1440	RECEPTACLES	2				
5	PHONEBOARD QUAD		20/2	39	*	40	20/1	1440	KITCHEN APPLIANCES	2				
	SPARE		*	41	*	42	20/1	1440	RECEPTACLES	2				
6	RTU #1	4586	60/2	43	*	44	20/1	1440	RECEPTACLES	2				
6	*	4586	*	45	*	46	20/1	1440	RECEPTACLES	2				
5	W/D STACKED (DRYER)	2375	30/2	47	*	48	20/1	1440	ELEC RM OUTLET	2				
5	*	2375	*	49	*	50	20/1	1440	DESK/FLOOR OUTLET	2				
	SPARE		15/1	51	*	52	20/1	1440	RECEPTACLES	2				
1	R-2 AREA LIGHTS	1296	20/1	53	*	54	20/1		EXTERIOR LIGHTS	1				
	SPARE		20/1	55	*	56			EXTERIOR LIGHTS	1				
	SPARE		20/1	57	*	58	20/1	905	R-2 RECEPTACLES (ARC FLASH)	2				
2	WASH MACHINE	1440	20/1	59	*	60	20/1	1440	R-2 RECEPTACLES (ARC FLASH)	2				
Phase A		34039 VA				NOTES:			line-line voltage					
Phase B		36714 VA							208					
Phase C		33488 VA							largest motor (va)					
Total Connected		104241 VA							5990					
load code:		ph. A	ph. B		ph. C		total	factor	calculated load (va)					
1. LIGHTS=		820	700		2096 VA		3616	1.25	4520					
2. RECEPT.=		4860	5225		7200 VA		17285	1 + 0.5	13643					
3. HEATING=		0	0		0 VA		0	1.00	0					
4. KITCHEN=		0	0		0 VA		0	1.00	0					
5. EQUIP. =		16598	20338		19027 VA		55963	1.00	55963					
6. MOTORS=		11761	10451		5165 VA		27377	*	28875					
7. MISC=		0	0		0 VA		0	1.00	0					
(* 125% of the largest motor + 100% of the balance)												TOTAL =		103000

3

E1.7

PANEL B SCHEDULE

SCALE: NA

MFIA PANEL SCHEDULE											
panel A			mounting WALL		location				connected load amps		
voltage 120/208V			phase 3		bus & main 225A MLO				calculated load amps		
C	service	va	a/p	no.	a b c	no.	a/p	va	service	C	
6	RTU-6	5404	60/3	1	*	2	50/3	4203	RTU #4	6	
6	*	5404	*	3	*	4	*	4203	*	6	
6	*	5404	*	5	*	6	*	4203	*	6	
7	FOUNTAIN GFCI	240	15/1	7	*	8	50/3	4203	RTU #2	6	
	SPARE		20/1	9	*	10	*	4203	*	6	
6	EF-6	50	15/1	11	*	12	*	4203	*	6	
6	EF-1	600	20/1	13	*	14	15/1		SPARE		
6	EF-2	600	20/1	15	*	16	30/2	2375	W/D STACK (DRYER)	5	
6	EF-3	1176	20/1	17	*	18	*	2375	*	5	
1	SLEEPING LIGHTS	1050	20/1	19	*	20			RISER COMPRESSOR MOTOR		
1	EGRESS LIGHTS	1590	20/1	21	*	22			VAULT RECEPTACLE		
1	COMMON 2 AREA LIGHTS	1250	20/1	23	*	24			SPARE		
1	COMMON 1 + SOFFIT LIGHTS	1150	20/1	25	*	26	20/1	1920	COPY MACHINE	5	
1	OFFICE LIGHTS	905	20/1	27	*	28			SPARE		
	SPACE			29	*	30			SPARE		
	EGRESS LIGHTS			31	*	32	15/1		SPARE		
	SPACE			33	*	34	30/2	2375	COINED DRYER	5	
	SPACE			35	*	36	*	2375	*	5	
	SPACE			37	*	38	20/1	1920	IT ROOM RECEPTACLE	7	
	SPACE			39	*	40	20/1	1440	COMPUTER RECEPS	7	
	SPACE			41	*	42	20/1	1440	RECEPTACLES	2	
Phase A			20690 VA		NOTES:				line-line voltage		
Phase B			23095 VA						208		
Phase C			22476 VA						largest motor (va)		
Total Connected			66261 VA						4900		
load code:			ph. A	ph. B	ph. C		total	factor	calculated load (va)		
1. LIGHTS=			2200	2495	1250 VA		5945	1.25	7431		
2. RECEPT.=			0	0	1440 VA		1440	1 + 0.5	1440		
3. HEATING=			0	0	0 VA		0	1.00	0		
4. KITCHEN=			0	0	0 VA		0	1.00	0		
5. EQUIP.=			1920	4750	4750 VA		11420	1.00	11420		
6. MOTORS=			14410	14410	15036 VA		43856	*	45081		
7. MISC=			2160	1440	0 VA		3600	1.00	3600		
(* 125% of the largest motor + 100% of the balance)									TOTAL = 68972		

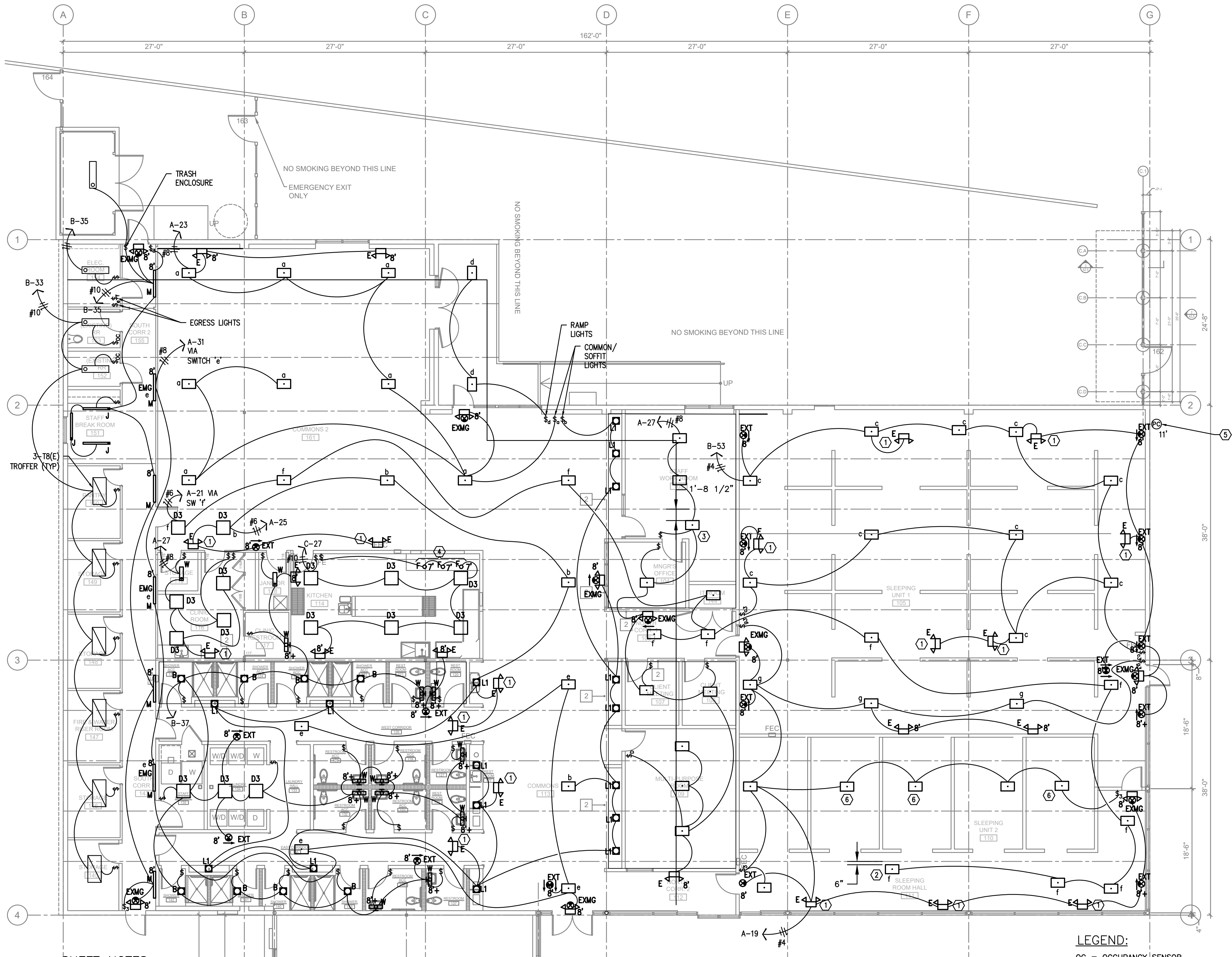
2

E1.7

PANEL A SCHEDULE

SCALE: NA

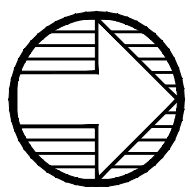
MFIA PANEL SCHEDULE											
panel C			mounting WALL		location				connected load amps		
voltage 120/208V			phase 3		bus & main 200A MLO				calculated load amps		
C	service	va	a/p	no.	a b c	no.	a/p	va	service	C	
4	WARE WASH	5885	70/3	1	*	2	35/3	3266	STEAM JACKETED KETTLE	4	
4	*	5885	*	3	*	4	*	3266	*	4	
4	*	5885	*	5	*	6	*	3266	*	4	
5	MICROWAVE OVEN	1608	15/1	7	*	8	15/3	733	MAU-1	6	
5	HOOD CONTROL PANEL	2400	25/1	9	*	10	*	733	*	6	
	SPARE TO KITCHEN		25/1	11	*	12	*	733	*	6	
	SPARE			13	*	14	15/2	541	KEX-1	6	
	WASHING MACHINE			15	*	16	*	541	*	6	
7	FIRE ALARM PANEL	1200	20/1	17	*	18	20/1		SPARE		
	SMOKE DAMPERS			19	*	20	15/2	541	KEX-2	6	
	SPACE			21	*	22	*	541	*	6	
	SPACE			23	*	24	20/1		SPARE		
	SPACE			25	*	26	15/1	912	REACH-IN FREEZER	5	
1	KITCHEN LIGHTING	650	20/1	27	*	28	15/1	1176	REACH-IN REFRIGERATOR	5	
	SPACE			29	*	30	15/1	900	REACH-IN REFRIGERATOR	5	
2	KITCHEN OUTLET (E1)	1200	15/1	31	*	32	15/1	200	GAS OVEN	4	
2	REACH REFRIGERATOR	1200	15/1	33	*	34	20/1	1548	RICE COOKER	4	
2	KITCHEN OUTLET (E3)	1200	15/1	35	*	36	15/1	1176	REACH-IN FREEZER	5	
2	KITCHEN OUTLET (E2)	1200	15/1	37	*	38	15/1	300	GAS GRIDDLE	5	
	SPACE			39	*	40			SPACE		
	SPACE			41	*	42			SPACE		
Phase A		16386 VA		NOTES:					line-line voltage		
Phase B		17940 VA							208		
Phase C		14360 VA							largest motor (va)		
Total Connected		48686 VA							2199		
load code:		ph. A	ph. B	ph. C		total	factor	calculated load (va)			
1. LIGHTS=		0	650	0 VA		650	1.25	813			
2. RECEPT.=		2400	1200	1200 VA		4800	1 + 0.5	4800			
3. HEATING=		0	0	0 VA		0	1.00	0			
4. KITCHEN=		9351	10699	9151 VA		29201	0.80	23361			
5. EQUIP.=		2820	3576	2076 VA		8472	1.00	8472			
6. MOTORS=		1815	1815	733 VA		4363	*	4913			
7. MISC=		0	0	1200 VA		1200	1.00	1200			
(* 125% of the largest motor + 100% of the balance)							TOTAL =		43558		



SHEET NOTES:

- 1 PROVIDE MOUNTING ON CEILING.
- 2 MOUNT FIXTURE TO WITHIN 12" FROM 18" BEAM.
- 3 MOUNT FIXTURE AT LEAST 1.6' FROM 18" BEAM.
- 4 PENDANT LIGHTS. STEM MOUNTED AT 7' A.F.F FROM CEILING.
- 5 PROVIDE PHOTOCELL, INTERMETIC, EK4236S OR EQUAL AT 11' A.F.F PER MANUFACTURER REQUIREMENT. IT SHALL BE WIRED TO EXTERIOR FIXTURES FOR DUSK TO DAWN OPERATION. MATCH VOLTAGE RATING TO THAT OF FIXTURES.

- 6 FIXTURES TO BE LOCATED AT CENTER OF PARTITION WALLS.



1 LIGHTING PLAN
E2.1 SCALE: 1/8" = 1/0"

LEGEND:

- OC = OCCUPANCY SENSOR
PC = PHOTOCELL
D = DIMMING

GENERAL NOTES:

1. FIXTURES WITHOUT LABELS ARE EXISTING FIXTURES. REFER TO DEMO PLAN FOR FURTHER DETAILS.
2. FIXTURE HEIGHTS SHOWN ARE MEASURED TO THE BOTTOM OF FIXTURE ABOVE FINISHED FLOOR.
3. PROVIDE LABELS TO LIGHT SWITCHES AS SHOWN.
4. PROVIDE UN-SWITCHED CIRCUIT TO FIXTURE WITH EMERGENCY BATTERY PACK.
5. TYPE 'L1' FIXTURES TO BE MOUNTED RECESSED TO SOFFIT. FIXTURES SHALL BE ON SWITCHED CIRCUIT 'b'.
6. LOWER CASE LETTER REPRESENTS SWITCHED CIRCUIT. FIXTURES ARE TO BE WIRED TO CORRESPONDING SWITCHES AS SHOWN.

FOSTER SHELTER

6144 SE FOSTER RD, PORTLAND, OREGON 97206
CLIENT: MULTNOMAH COUNTY

PROJECT NO.	ISSUE DATE
17-0918	05.04.2018
REVISIONS	CHECKSHEET 5.23.2018
OWNER CHANGES 2.26.2019	

SHEET

ELECTRICAL
LIGHTING PLAN

E2.1

PERMIT SET

© MERRYMAN BARNES ARCHITECTS, INC.

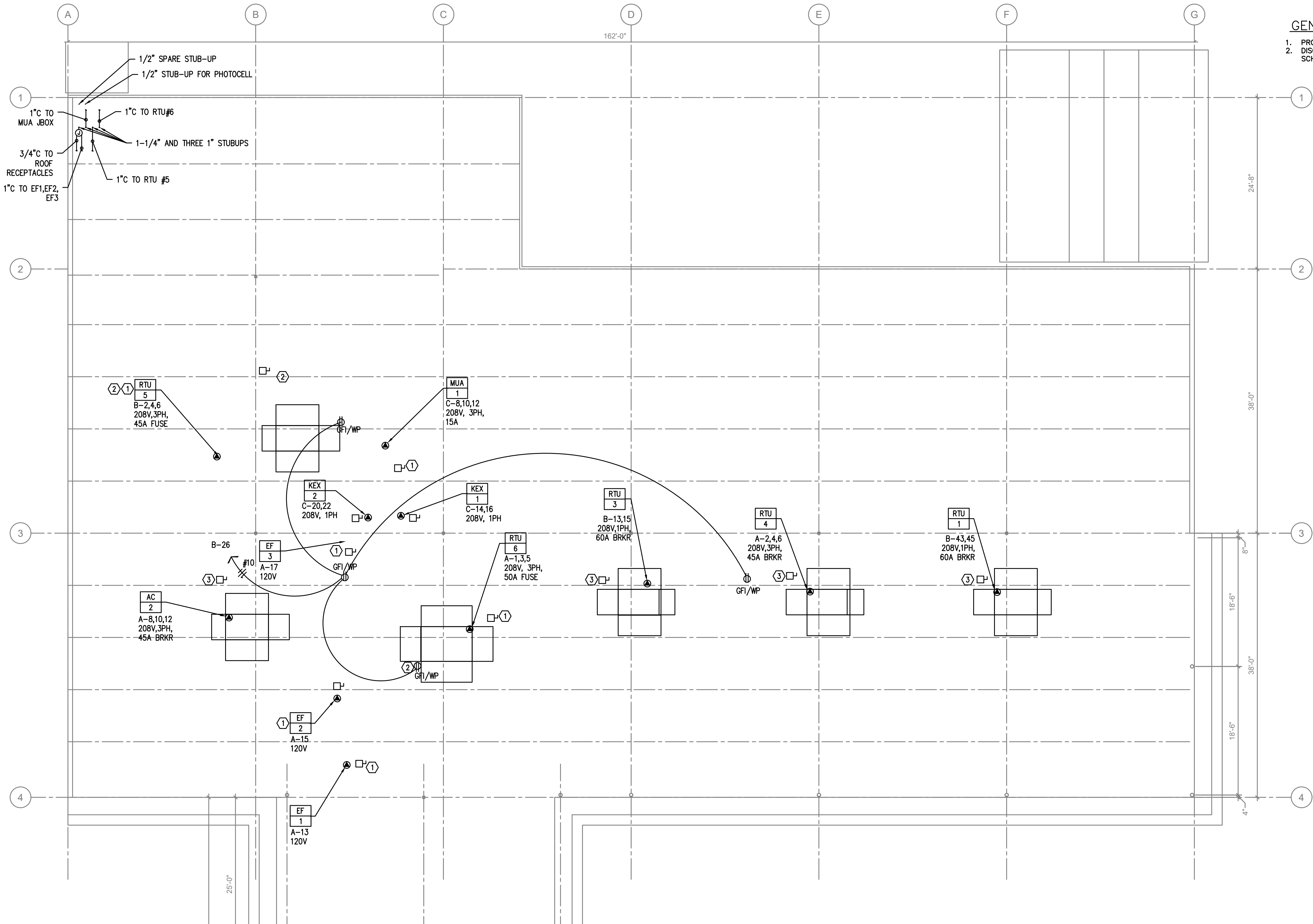
RECORD DRAWING:

THIS DRAWING HAS BEEN UPDATED TO REFLECT CHANGES MADE DURING CONSTRUCTION BASED UPON INFORMATION FURNISHED TO THE ENGINEER BY THE INSTALLATION CONTRACTOR. NO WARRANTY EITHER EXPLICIT OR IMPLIED IS GIVEN BY MBIA, INC. AS TO THE ACCURACY AND/OR COMPLETENESS OF THIS INFORMATION.

AS-BUILT PREPARED 1.22.2020

PORTLAND OREGON 97217 P:503.222.3763

MBA
MERRYMAN BARNES ARCHITECTS

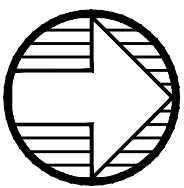


GENERAL NOTES:

1. PROVIDE MOUNTING FOR NEWLY INSTALLED DISCONNECTS AND RECEPTACLES.
2. DISCONNECT POWER TO EXISTING UNITS. RECONNECT TO NEW PANELS PER SCHEDULE.

SHEET NOTES:

- ① PROVIDE FACTORY INSTALLED EXTERNALLY MOUNTED UNIT DISCONNECT.
- ② PROVIDE FACTORY INSTALLED EXTERNALLY MOUNTED 15A, GFI AND WEATHER PROOF RECEPTACLE.
- ③ REUSE EXISTING DISCONNECT FOR NEW POWER CONNECTION.
- ④ DISCONNECT EXISTING RTU FROM EXISTING POWER. CUT CONDUIT BACK AND PROVIDE WATER TIGHT CAP FOR FUTURE USE.



1 ELECTRICAL ROOF PLAN
E3.0 SCALE: 1/8" = 1'-0"

RECORD DRAWING:

THIS DRAWING HAS BEEN UPDATED TO REFLECT CHANGES MADE DURING CONSTRUCTION BASED UPON INFORMATION FURNISHED TO THE ENGINEER BY THE INSTALLATION CONTRACTOR. NO WARRANTY EITHER EXPLICIT OR IMPLIED IS GIVEN BY MFA, INC. AS TO THE ACCURACY AND/OR COMPLETENESS OF THIS INFORMATION.

AS-BUILT PREPARED 1.22.2020

FOSTER SHELTER

6144 SE FOSTER RD, PORTLAND, OREGON 97206

CLIENT: MULTNOMAH COUNTY



PROJECT NO. 17-0918 ISSUE DATE 05.04.2018

REVISIONS CHECKSHEET 5.23.2018

OWNER CHANGES 2.26.2019

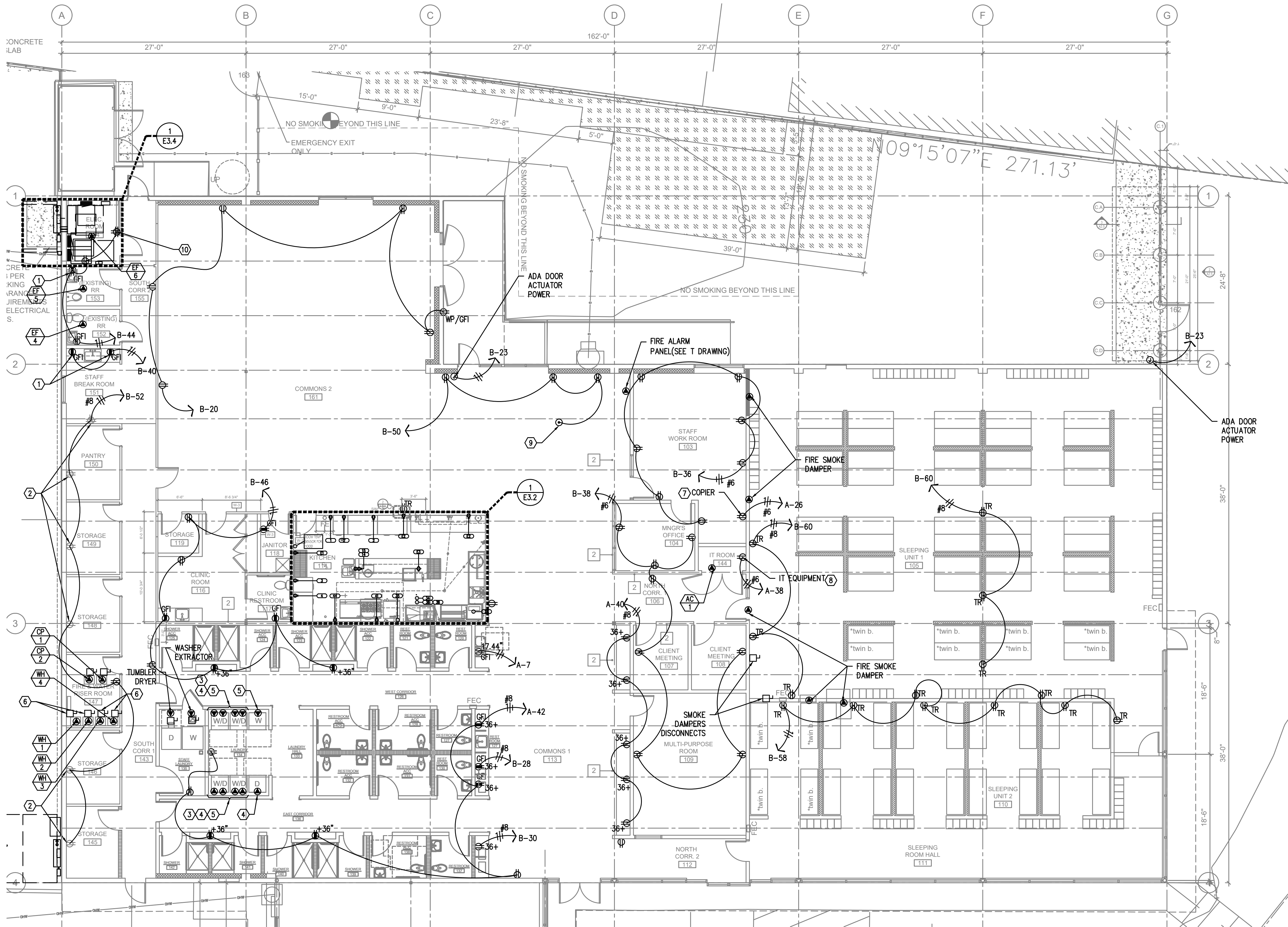
SHEET

ELECTRICAL
ROOF PLAN

E3.0

PERMIT SET

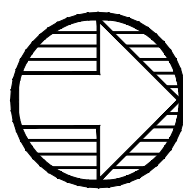
© MERRYMAN BARNES ARCHITECTS, INC.



SHEET NOTES:

- RETROFIT EXISTING RECEPTACLES WITH GFI RATED RECEPTACLES.
- REUSE EXISTING RECEPTACLE.
- STACKED WASHER/DRYER.
- PROVIDE A NEMA 6-30 RECEPTACLE AT 30"+ ABOVE FINISHED FLOOR FOR EACH DRYER.
- PROVIDE A NEMA 5-15 RECEPTACLE AT 30"+ ABOVE FINISHED FLOOR FOR EACH WASHER.
- PROVIDE A WATER HEATER CIRCUIT DISCONNECT FOR A SINGLE POINT CONNECTION PER SECTION 223000.
- PROVIDE NEMA 5-20R RECEPTACLE DEDICATED FOR COPIER MACHINE. PROVIDE LABEL AT RECEPTACLE.

- PROVIDE NEMA 5-20R RECEPTACLE DEDICATED FOR IT EQUIPMENT.
- PROVIDE RECEPTACLES IN FLOOR BOX SPECIFIED IN "T" DRAWING FOR FUTURE FRONT DESK. COORDINATE LOCATION WITH ARCHITECT.
- PROVIDE A NEW QUAD TO REPLACE EXISTING.



1 ELECTRICAL POWER PLAN
E3.1 SCALE: 1/8" = 1'-0"

LEGEND:

TR = TAMPER RESISTANT

GENERAL NOTES:

- DEMOLISH EXISTING ELECTRICAL EQUIPMENT IN ELECTRICAL ROOM. COORDINATE WITH PGE TO REMOVE EXISTING METER. SEE DEMO PLAN.
- DISCONNECT POWER TO ALL EXISTING RECEPTACLES. RECONNECT POWER TO WHERE SHOWN.
- DISCONNECT POWER TO ALL EXISTING LIGHT FIXTURES. RELOCATE AND RE-CIRCUIT PER E2.1. SEE E0.2 FOR EXISTING FIXTURES.
- PROVIDE METERING EQUIPMENT PER UTILITY REQUIREMENT.

RECORD DRAWING:

THIS DRAWING HAS BEEN UPDATED TO REFLECT CHANGES MADE DURING CONSTRUCTION BASED UPON INFORMATION FURNISHED TO THE ENGINEER BY THE INSTALLATION CONTRACTOR. NO WARRANTY, EITHER EXPLICIT OR IMPLIED, IS GIVEN BY MFA, INC. AS TO THE ACCURACY AND/OR COMPLETENESS OF THIS INFORMATION.

AS-BUILT PREPARED 1.22.2020

FOSTER SHELTER

6144 SE FOSTER RD, PORTLAND, OREGON 97206
CLIENT: MULTNOMAH COUNTY



MERRYMAN BARNES ARCHITECTS 4713 N ALBINA AVE SUITE 304 PORTLAND OREGON 97217 P 503.222.3793

PROJECT NO. 17-0918
ISSUE DATE 05.04.2018

REVISIONS
CHECKSHEET 5.23.2018

OWNER CHANGES 2.26.2019

SHEET

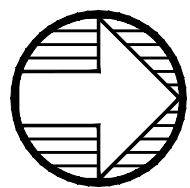
ELECTRICAL
POWER PLAN

E3.1

PERMIT SET

© MERRYMAN BARNES ARCHITECTS, INC.

2/27/2020 11:55:45 AM



1 KITCHEN POWER PLAN

E3.2 SCALE: 1/4" = 1'-0"

[illegible]

GENERAL NOTES:

1. DISCONNECT EXISTING POWER TO EXISTING RECEPTACLES IN KITCHEN.
2. KITCHEN EQUIPMENT INSTALLATION IS NOT IN THIS CONTRACT.
3. THIS DRAWING IS FOR COORDINATION OF INSTALLATION PURPOSE.

LEGEND:

- TR = TAMPER RESISTANT
 ⓐ = JUNCTION BOX

RECORD DRAWING:

THIS DRAWING HAS BEEN UPDATED TO REFLECT CHANGES MADE DURING CONSTRUCTION BASED UPON INFORMATION FURNISHED TO THE ENGINEER BY THE INSTALLATION CONTRACTOR. NO WARRANTY EITHER EXPLICIT OR IMPLIED IS GIVEN BY MFA, INC. AS TO THE ACCURACY AND/OR COMPLETENESS OF THIS INFORMATION.

AS-BUILT PREPARED 1.22.2020

FOSTER SHELTER

6144 SE FOSTER RD, PORTLAND, OREGON 97206
CLIENT: MULTNOMAH COUNTY

CLIENT: MULTNOMAH COUNTY

AB

MERRYMAN BARNES ARCHITECTS 4713 N ALBINA AVE. SUITE 304 PORTLAND, OREGON 97217 p 503.222.3753

PROJECT NO.	ISSUE DATE
17-0918	05.04.2018

REVISIONS

CHECKSHEET 5.23.2018

OWNER CHANGES 2.26.2019

SHEET

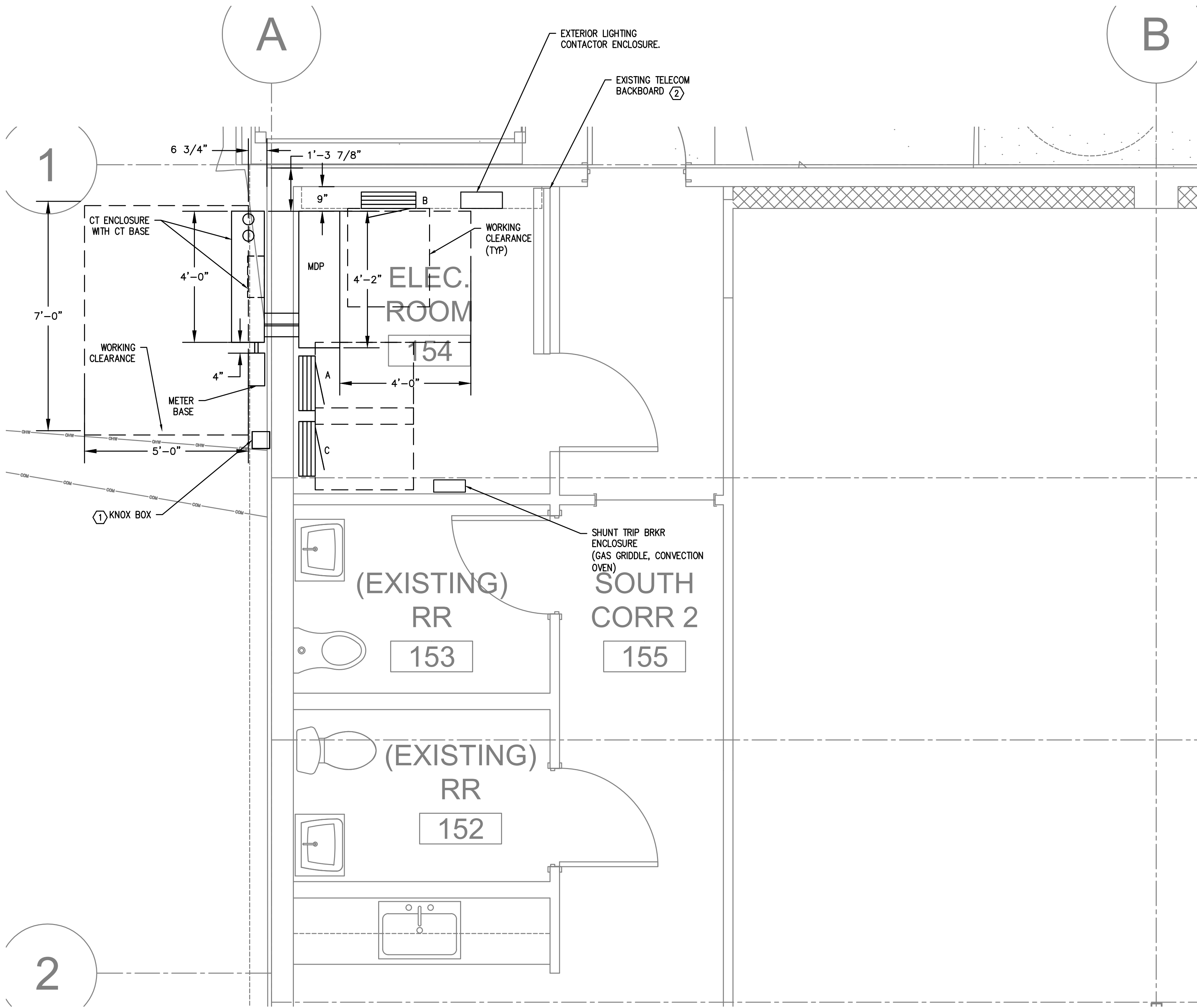
KITCHEN POWER PLAN

E3.2

PERMIT SET

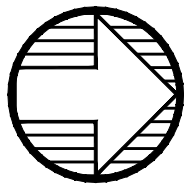
© MERRYMAN BARNES ARCHITECTS, INC.

1/27/2020 11:55:50 AM



SHEET NOTES:

- 1. COORDINATE WITH LOCAL FIRE MARSHALL TO PROVIDE A KNOX BOX. VERIFY LOCATION.
- 2. EXISTING TELECOM DEMARK POINT. COORDINATE WITH UTILITY IF REQUIRED TO RELOCATE THE EXISTING EQUIPMENT TO MAKE ROOM FOR NEW DOOR.
- 3. PROVIDE A NEW LIGHTING CONTROL WITH ASTRONOMICAL TIME CLOCK, INTERMETIC; ET1115C OR EQUAL. PROVIDE CREDIT IF EXISTINGS ARE REUSABLE.



1
E3.4

ELECTRICAL ROOM LAYOUT
SCALE: 1/2"= 1'-0"

GENERAL NOTES:

- 1. DEMOLISH EXISTING ELECTRICAL EQUIPMENT IN ELECTRICAL ROOM. COORDINATE WITH PGE TO REMOVE EXISTING METER. SEE DEMO PLAN.
- 2. DISCONNECT POWER TO ALL EXISTING RECEPTACLES. RECONNECT POWER TO WHERE SHOWN.
- 3. DISCONNECT POWER TO ALL EXISTING LIGHT FIXTURES. RELOCATE AND RE-CIRCUIT PER E2.1. SEE E0.2 FOR EXISTING FIXTURES.
- 4. PROVIDE METERING EQUIPMENT PER UTILITY REQUIREMENT.

RECORD DRAWING:

THIS DRAWING HAS BEEN UPDATED TO REFLECT CHANGES MADE DURING CONSTRUCTION BASED UPON INFORMATION FURNISHED TO THE ENGINEER BY THE INSTALLATION CONTRACTOR. NO WARRANTY EITHER EXPLICIT OR IMPLIED IS GIVEN BY MBA, INC. AS TO THE ACCURACY AND/OR COMPLETENESS OF THIS INFORMATION.

AS-BUILT PREPARED 1.22.2020

FOSTER SHELTER

6144 SE FOSTER RD, PORTLAND, OREGON 97206
CLIENT: MULTNOMAH COUNTY



MERRYMAN BARNES ARCHITECTS 4713 N ALBINA AVE SUITE 304 PORTLAND OREGON 97217 P 503.222.3793

PROJECT NO. 17-0918
ISSUE DATE 05.04.2018

REVISIONS
CHECKSHEET 5.23.2018

OWNER CHANGES 2.26.2019

SHEET

ELECTRICAL ROOM
LAYOUT

E3.4

PERMIT SET

© MERRYMAN BARNES ARCHITECTS, INC.