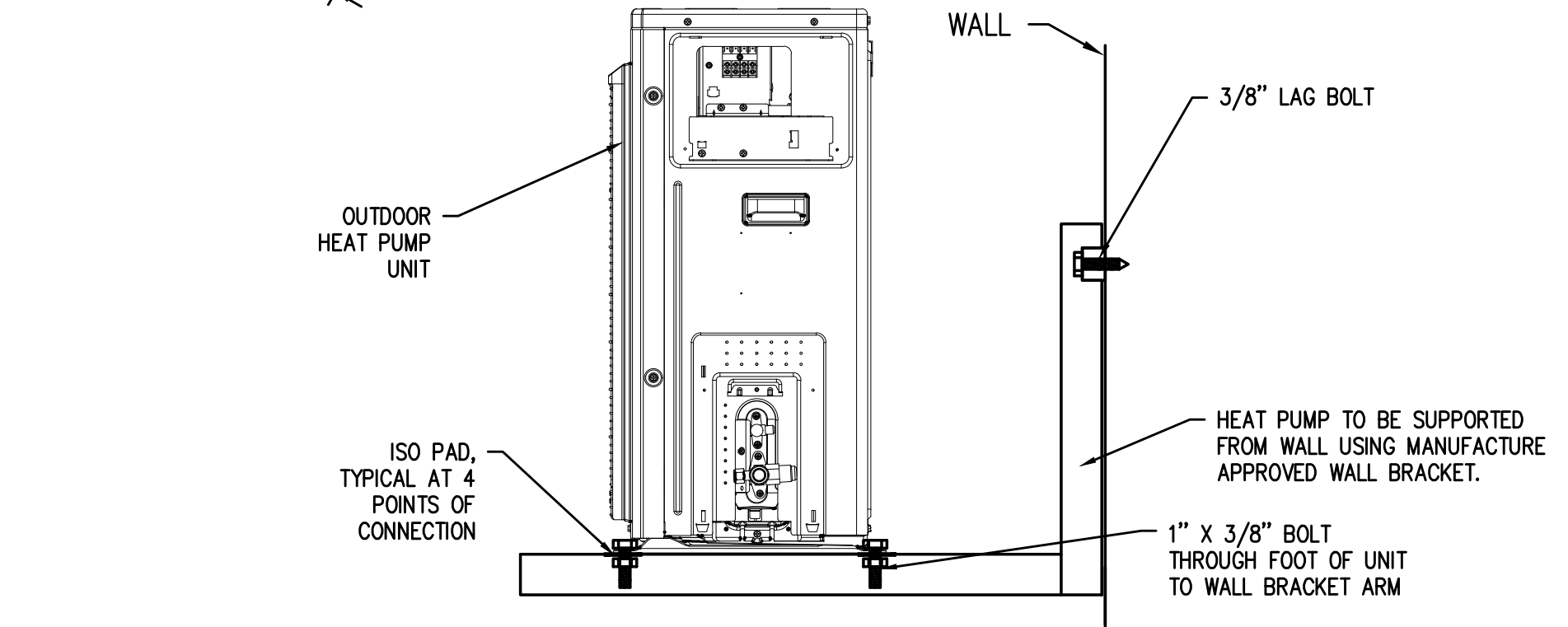
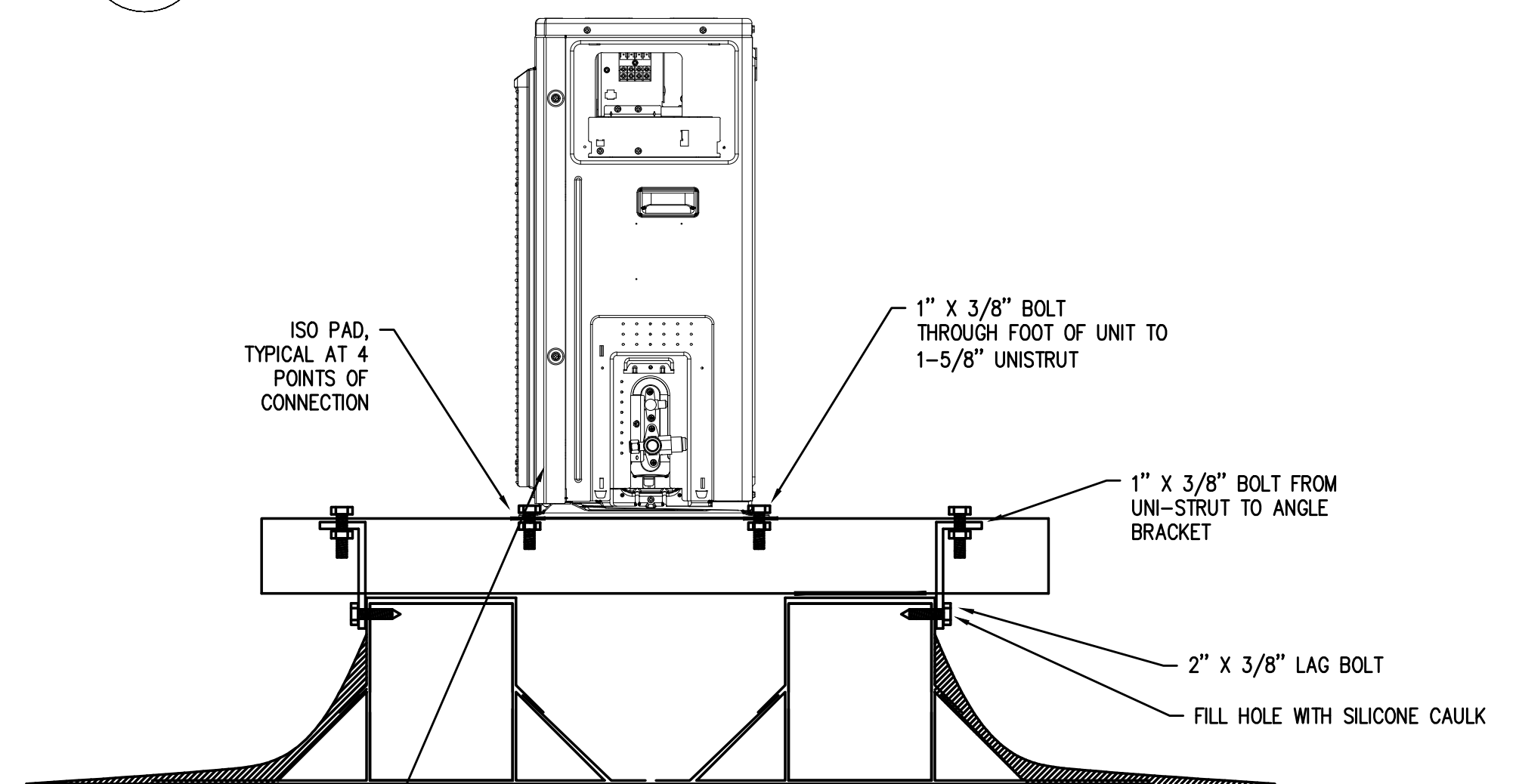


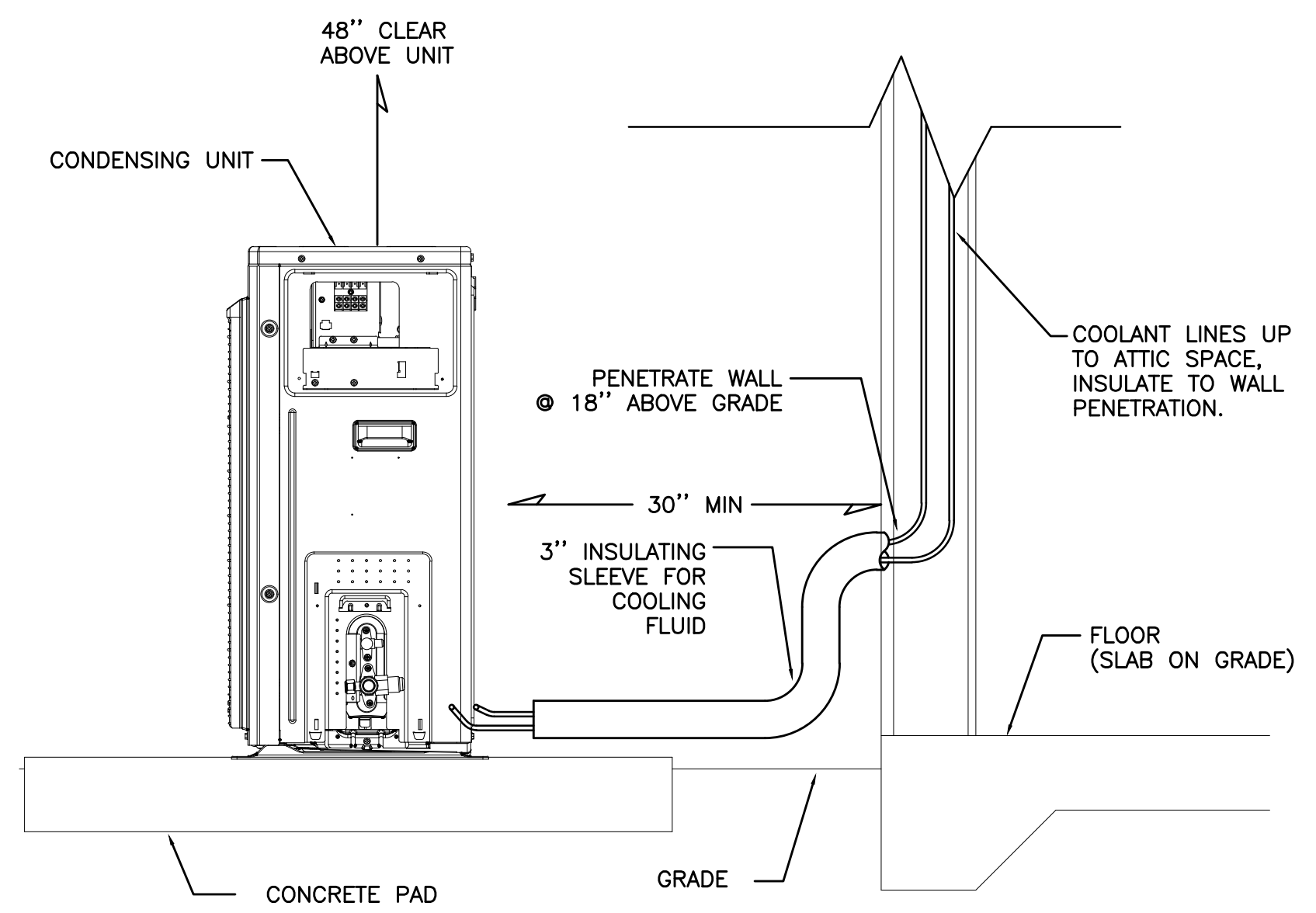
1 SIDE WALL DWELLING UNIT VENTING
M6.03 NOT TO SCALE



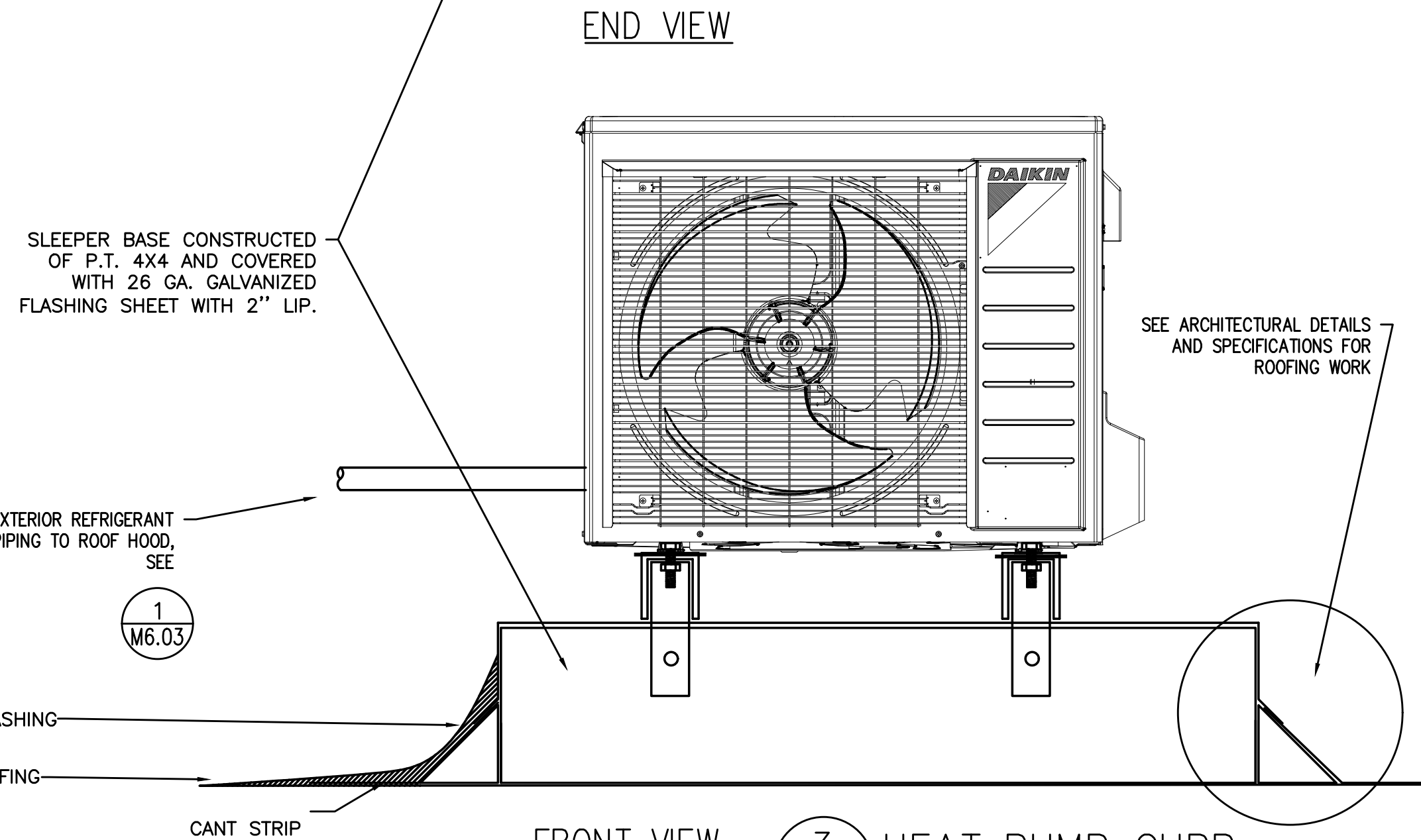
2 HEAT PUMP WALL BRACKET
M6.03 SCALE: DETAIL



END VIEW



5 HEAT PUMP PAD MOUNT
M6.03 SCALE: DETAIL



FRONT VIEW

3 HEAT PUMP CURB
M6.03 DETAIL

Job Name/Location: _____ Tag No.: _____
 Date: _____ For: File Resubmit
 PO No.: _____ Approval Other
 Architect: GC: _____
 Engr: Mech: _____
 Rep: _____
 (Company) (Project Manager)

PREMTB100
 LG Standard III Wired Remote Controller

Electrical:
 Power Supply: 12VDC Power From Indoor Unit

Operating Environment:
 Operating Temperature: 32°F ~ 104°F (0°C ~ 40°C)
 Storage Temperature: -4°F ~ +147°F (-20°C ~ +60°C)
 Humidity: 0% ~ 90% (RH)

Unit Data:
 Dimensions: 4-3/4" W x 4-3/4" H x 5/8" D
 Min Number of Indoor Units (per controller): 16
 Maximum Number of Controllers (per Indoor Unit): 2

Standard Features:
 • 4.5/16" Color Display • Time Display
 • Touch Button • Operation On / Off Status LED

Basic Functions:
 • Room Temperature and Humidity Sensing and Display
 • Operation - On / Off
 • Mode - Auto / Cool / Dry / Heat / Fan Only
 • Ventilation Mode (For Ventilator Units)
 • Occupied Cooling and Heating Temperature Setpoint
 • Unoccupied Cooling and Heating Setback Temperature Setpoint
 • Fan Speed - Auto / Low / Med / High
 • Discharge Vanes - Auto / Swing / Fixed
 • Controller Lock Function
 • Static Pressure Installer Setting
 • Error Code Display During Unit or System Malfunction
 • Auto Restart on Power Failure
 • Manual Central Control Addressing

Advanced Functions:
 • Time of Day Scheduling, Five (5) Events per Day with Control of Occupied / Unoccupied, On / Off, Mode, Setpoints, and Fan Speed
 • Two Setpoint Autochanger (For Heat Recovery Systems)
 • Minimum Difference between Setpoints (0 ~ 10°) Adjustable Dead-band
 • Home Leave Function for Temporary Unoccupied Status
 • Sub-function Setting
 • Comfort Level Display
 • External Equipment Control via One (1) Digital Output
 • Filter Sign Check and Initialization
 • Time Limit Control (30 minutes ~ 540 minutes, 30 minute units)
 • AP Mode Setting for LG Wi-Fi Modem Installation

Optional Accessories (Sold Separately):
 PZCWR1 - 33-foot Extension Cable Assembly
 PZCWRG3 - Group Control Cable Kit

Must follow installation instructions in the applicable LG installation manual.
 For central product development, LG reserves the right to change specifications without notice.
 © LG Electronics U.S.A., Inc. Engineering ID No. All rights reserved. "LG Wi-Fi Good" is a registered trademark of LG Corp. www.lg.com Page 1 of 3

Connectivity:
 LG Communications 1 Channel for V-Net, Wi-Fi with ThinQ Capability

Communications Cable Specifications (V-Net):
 Type: Three (3) Conductor (Red: 12V, Yellow: Signal, Black: GND)
 Size: Stranded, Twisted, Unshielded
 Length: AWG 22-3 Up to 164 feet
 AWG - American Wire Gauge

Controller Screen and Buttons:

Dimensions:

Notes:
 1. Available functions / features may differ based on connected system.
 2. Communication cable can be extended to a maximum of 164 feet between controller and indoor unit, by using field-supplied wire or the Wired Remote Group Control Cable Assembly (PZCWRG3) or Wired Remote Extension Cable (PZCWR1), maximum of four (4).
 3. Must follow installation instructions in the applicable LG installation manual.
 4. Centralized controller (AC Smart / ACP Series) and Premium PDI are required for energy target display function.

4 SPLIT SYSTEM THERMOSTAT
M6.03 SCALE: DETAIL



MFA Consulting Engineers
 2007 S.E. Ash St.
 Portland, OR 97214
 PHN: (503) 234-0548
 FAX: (503) 234-0677
 WWW.MFA-ENG.COM
 CONTACT: Mark Denyer

MERIDIAN GARDENS
 11250 SE DIVISION STREET
 PORTLAND, OREGON 97266
 CENTRAL CITY CONCERN

REVISION	DATE	REASON FOR ISSUE

MECHANICAL
 DETAILS

PERMIT SET

DATE: 08/29/2022 PROJECT NUMBER: 203970

SHEET NUMBER

M6.03

