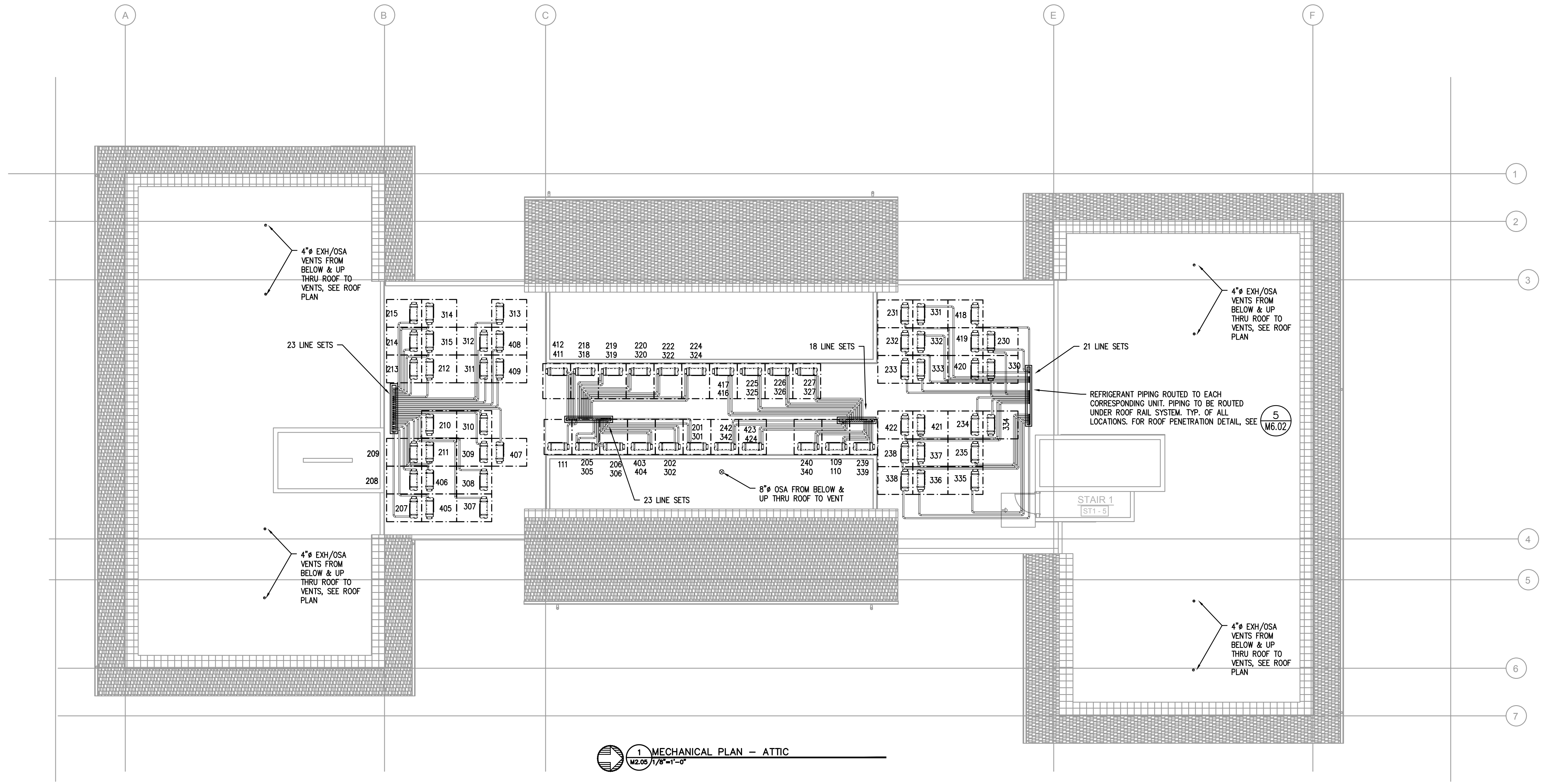
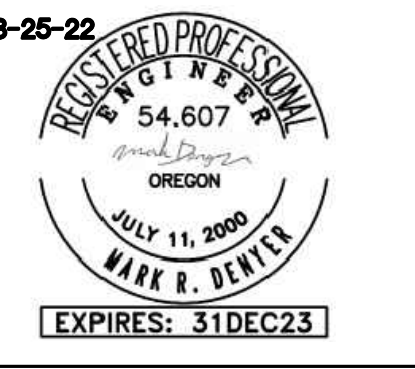


KEY NOTES:

- (A) — REFRIGERANT LINE SETS FROM CONDENSING UNITS ON LEVEL 1/ROOF, TO FAN COILS SEE UNIT NUMBERS AND ROUTING FOR EXACT PLACEMENT. CLT PENETRATION, 3-1/2" HOLE, ALL HOLES SPACED 2" MIN. APART.
- (B) — PANASONIC WHISPERGREEN CEILING FAN WITH 4" Ø DUCT TO ROOF OR EXTERIOR WALL TERMINATION VIA SOFFIT(S) PROVIDED. BACK DRAFT DAMPER INTEGRAL TO FAN, FAN TO OPERATE AT LOW SPEED CONTINUOUS (30CFM) AND INCREASE TO 80CFM WHEN BUILT-IN MOTION SENSOR IS ACTIVATED. INSULATED FINAL 5' OF DUCTWORK. NO DUCTWORK SHALL PENETRATE RATED ASSEMBLY. SEE (1) (M6.01) (2) (M6.01)
- (C) — 6" Ø HOOD DUCT TO ROOF/EXTERIOR WALL TERMINATION VIA SOFFIT(S) PROVIDED. BACK DRAFT DAMPER INTEGRAL TO HOOD. INSULATED FINAL 5' OF DUCTWORK. NO DUCTWORK SHALL PENETRATE RATED ASSEMBLY. HOOD FAN TO OPERATE INTERMITTENTLY. PER 2019 OMSC 505.3 HOOD DUCTS SHALL HAVE SMOOTH INNER WALLS AND SHALL BE AIR TIGHT AND BE EQUIPPED WITH A BACKDRAFT DAMPER.
- (D) — EXTERIOR EXHAUST PLENUM — SEE (3) (M6.01) MAINTAIN 36" CLEAR TO OPERABLE WINDOWS AND DOORS.
- (E) — ALDES AIR INLET, SEE (4) (M6.02)
- (F) — PROVIDE 12X12 ACCESS PANEL FOR SF-1.



1 MECHANICAL PLAN — ATTIC
M2.05 1/8"=1'-0"



M F I A Consulting Engineers
 2007 S.E. Ash St.
 Portland, OR 97214
 PHN: (503) 234-0548
 FAX: (503) 234-0677
 INC. WWW.MFIA-ENG.COM
 CONTACT: Mark Denyer

MERIDIAN GARDENS
 11250 SE DIVISION STREET
 PORTLAND, OREGON 97266
 CENTRAL CITY CONCERN

REVISION	DATE	REASON FOR ISSUE

MECHANICAL PLAN - ATTIC

PERMIT SET

DATE 08/29/2022	PROJECT NUMBER 203970
--------------------	--------------------------

SHEET NUMBER
M2.05

