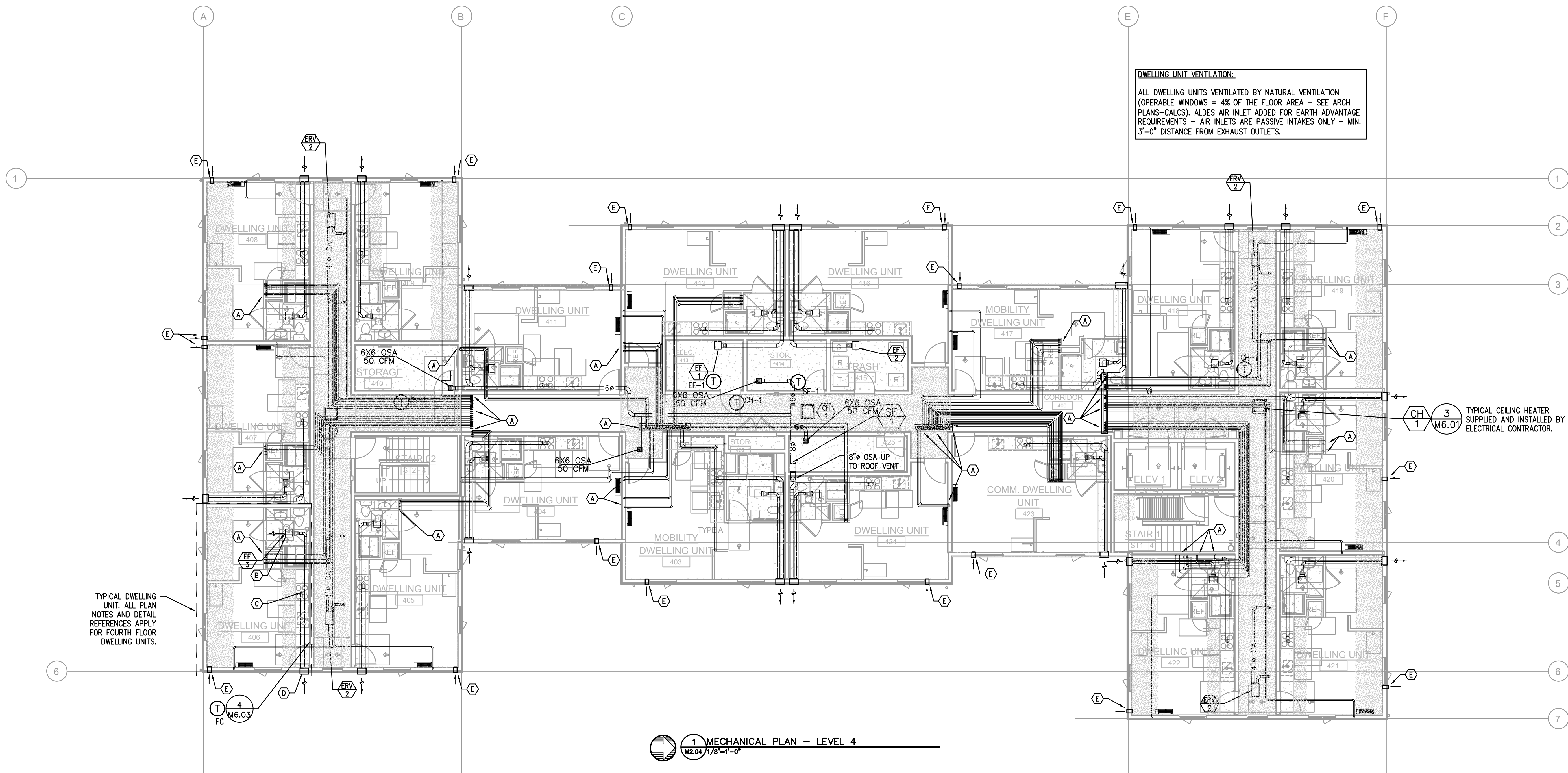


KEY NOTES:

- (A) — REFRIGERANT LINE SETS FROM CONDENSING UNITS ON LEVEL 1/ROOF, TO FAN COILS SEE UNIT NUMBERS AND ROUTING FOR EXACT PLACEMENT. CLT PENETRATION, 3-1/2" HOLE, ALL HOLES SPACED 2" MIN. APART.
- (B) — PANASONIC WHISPERGREEN CEILING FAN WITH 4" Ø DUCT TO ROOF OR EXTERIOR WALL TERMINATION VIA SOFFIT(S) PROVIDED. BACK DRAFT DAMPER INTEGRAL TO FAN, FAN TO OPERATE AT LOW SPEED CONTINUOUS (30CFM) AND INCREASE TO 80CFM WHEN BUILT-IN MOTION SENSOR IS ACTIVATED. INSULATED FINAL 5' OF DUCTWORK. NO DUCTWORK SHALL PENETRATE RATED ASSEMBLY. SEE (1) (2) (M6.01) (M6.01)
- (C) — 6" Ø HOOD DUCT TO ROOF/EXTERIOR WALL TERMINATION VIA SOFFIT(S) PROVIDED. BACK DRAFT DAMPER INTEGRAL TO HOOD. INSULATED FINAL 5' OF DUCTWORK. NO DUCTWORK SHALL PENETRATE RATED ASSEMBLY. HOOD FAN TO OPERATE INTERMITTENTLY. PER 2019 OMSC 505.3 HOOD DUCTS SHALL HAVE SMOOTH INNER WALLS AND SHALL BE AIR TIGHT AND BE EQUIPPED WITH A BACKDRAFT DAMPER.
- (D) — EXTERIOR EXHAUST PLENUM — SEE (3) (M6.01) MAINTAIN 36" CLEAR TO OPERABLE WINDOWS AND DOORS.
- (E) — ALDES AIR INLET, SEE (4) (M6.02)
- (F) — PROVIDE 12X12 ACCESS PANEL FOR SF-1.



1 MECHANICAL PLAN - LEVEL 4
M2.04 1/8"=1'-0"

TYPICAL DWELLING UNIT. ALL PLAN NOTES AND DETAIL REFERENCES APPLY FOR FOURTH FLOOR DWELLING UNITS.

DWELLING UNIT VENTILATION:
ALL DWELLING UNITS VENTILATED BY NATURAL VENTILATION (OPERABLE WINDOWS = 4% OF THE FLOOR AREA - SEE ARCH PLANS-CALCS). ALDES AIR INLET ADDED FOR EARTH ADVANTAGE REQUIREMENTS - AIR INLETS ARE PASSIVE INTAKES ONLY - MIN. 3'-0" DISTANCE FROM EXHAUST OUTLETS.

(CH 3) TYPICAL CEILING HEATER SUPPLIED AND INSTALLED BY ELECTRICAL CONTRACTOR.



MEDIA Consulting Engineers
2007 S.E. Ash St.
Portland, OR 97214
PH: (503) 234-0548
FAX: (503) 234-0677
WWW.MEDIA-ENG.COM
CONTACT: Mark Denyer

MERIDIAN GARDENS
11250 SE DIVISION STREET
PORTLAND, OREGON 97266
CENTRAL CITY CONCERN

REVISION	DATE	REASON FOR ISSUE

MECHANICAL PLAN- LEVEL 4

PERMIT SET

DATE: 08/29/2022 PROJECT NUMBER: 203970

SHEET NUMBER: **M2.04**

