

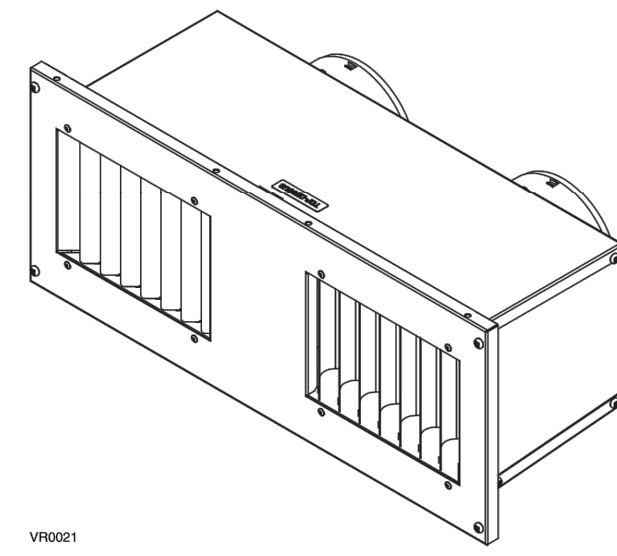
KEY NOTES:

- (A) — REFRIGERANT LINE SETS FROM CONDENSING UNITS ON LEVEL 1/ROOF, TO FAN COILS SEE UNIT NUMBERS AND ROUTING FOR EXACT PLACEMENT. CLT PENETRATION, 3-1/2" HOLE, ALL HOLES SPACED 2" MIN. APART.
- (B) — PANASONIC WHISPERGREEN CEILING FAN WITH 4" DUCT TO ROOF OR EXTERIOR WALL TERMINATION VIA SOFFIT(S) PROVIDED. BACK DRAFT DAMPER INTEGRAL TO FAN, FAN TO OPERATE AT LOW SPEED CONTINUOUS (30CFM) AND INCREASE TO 80CFM WHEN BUILT-IN MOTION SENSOR IS ACTIVATED. INSULATED FINAL 5' OF DUCTWORK. NO DUCTWORK SHALL PENETRATE RATED ASSEMBLY. SEE 1 2 M6.01 M6.01
- (C) — 6" HOOD DUCT TO ROOF/EXTERIOR WALL TERMINATION VIA SOFFIT(S) PROVIDED. BACK DRAFT DAMPER INTEGRAL TO HOOD. INSULATED FINAL 5' OF DUCTWORK. NO DUCTWORK SHALL PENETRATE RATED ASSEMBLY. HOOD FAN TO OPERATE INTERMITTENTLY PER 2019 OMSC 505.3 HOOD DUCTS SHALL HAVE SMOOTH INNER WALLS AND SHALL BE AIR TIGHT AND BE EQUIPPED WITH A BACKDRAFT DAMPER.
- (D) — EXTERIOR EXHAUST PLENUM — SEE 3 M6.01 MAINTAIN 36" CLEAR TO OPERABLE WINDOWS AND DOORS.
- (E) — ALDES AIR INLET, SEE 4 M6.02
- (F) — PROVIDE 12X12 ACCESS PANEL FOR SF-1.

BROAN

Metal Tandem Hood

Part no.: V14695



ONE OUTDOOR PORT FOR DOUBLE USAGE

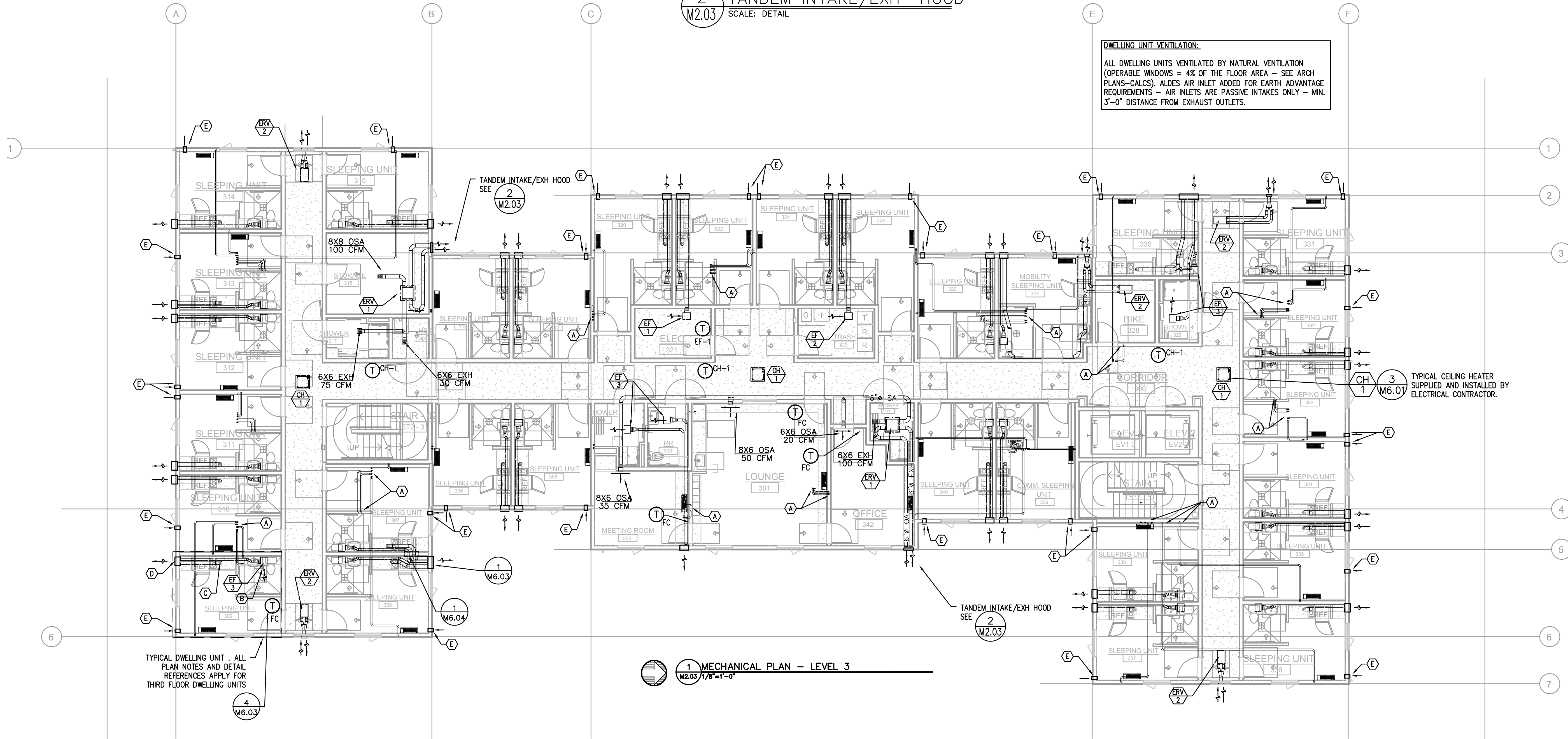
More than ever, today's builders and contractors are aiming to optimize material, manpower and time. One way to achieve this goal when installing a ventilation system is to install our new metal tandem hood. This new device simplifies the installation not only because only one hole is required on the exterior wall. In fact, every installer knows that locating efficiently one outdoor port is easier (and faster) than locating two. Moreover, there is hardly any intercontamination!

- Galvanized satin steel cover grille (ready to be painted by the HVAC contractor to match building's color).
- One 7" x 18" hole in the exterior wall.
- Tandem box eliminates the need of a Tandem transition.
- Intake and exhaust ducts connection can be performed either on left or right port, for more convenience.
- Outdoor connection performed in half time.
- Suitable for ventilation unit producing an airflow lower than 120 CFM (for higher airflow capacity, please confirm that the overall pressure losses of the ventilation system is suitable for the unit used). See chart below.

Pressure Drops (Intake and Exhaust)

2 TANDEM INTAKE/EXH HOOD
SCALE: DETAIL

DWELLING UNIT VENTILATION:
ALL DWELLING UNITS VENTILATED BY NATURAL VENTILATION (OPERABLE WINDOWS = 4% OF THE FLOOR AREA - SEE ARCH PLANS-CALCS). ALDES AIR INLET ADDED FOR EARTH ADVANTAGE REQUIREMENTS - AIR INLETS ARE PASSIVE INTAKES ONLY - MIN. 3'-0" DISTANCE FROM EXHAUST OUTLETS.



TYPICAL DWELLING UNIT - ALL PLAN NOTES AND DETAIL REFERENCES APPLY FOR THIRD FLOOR DWELLING UNITS

1 MECHANICAL PLAN - LEVEL 3
SCALE: 1/8"=1'-0"



MEDIA Consulting Engineers
2007 S.W. Ash St.
Portland, OR 97214
PH: (503) 234-0548
FAX: (503) 234-0677
INC. WWW.MEDIA-ENG.COM
CONTACT: Mark Denyer

MERIDIAN GARDENS
11250 SE DIVISION STREET
PORTLAND, OREGON 97266
CENTRAL CITY CONCERN

REVISION	DATE	REASON FOR ISSUE

MECHANICAL PLAN - LEVEL 3

PERMIT SET

DATE: 08/29/2022 PROJECT NUMBER: 203970

SHEET NUMBER: **M2.03**

