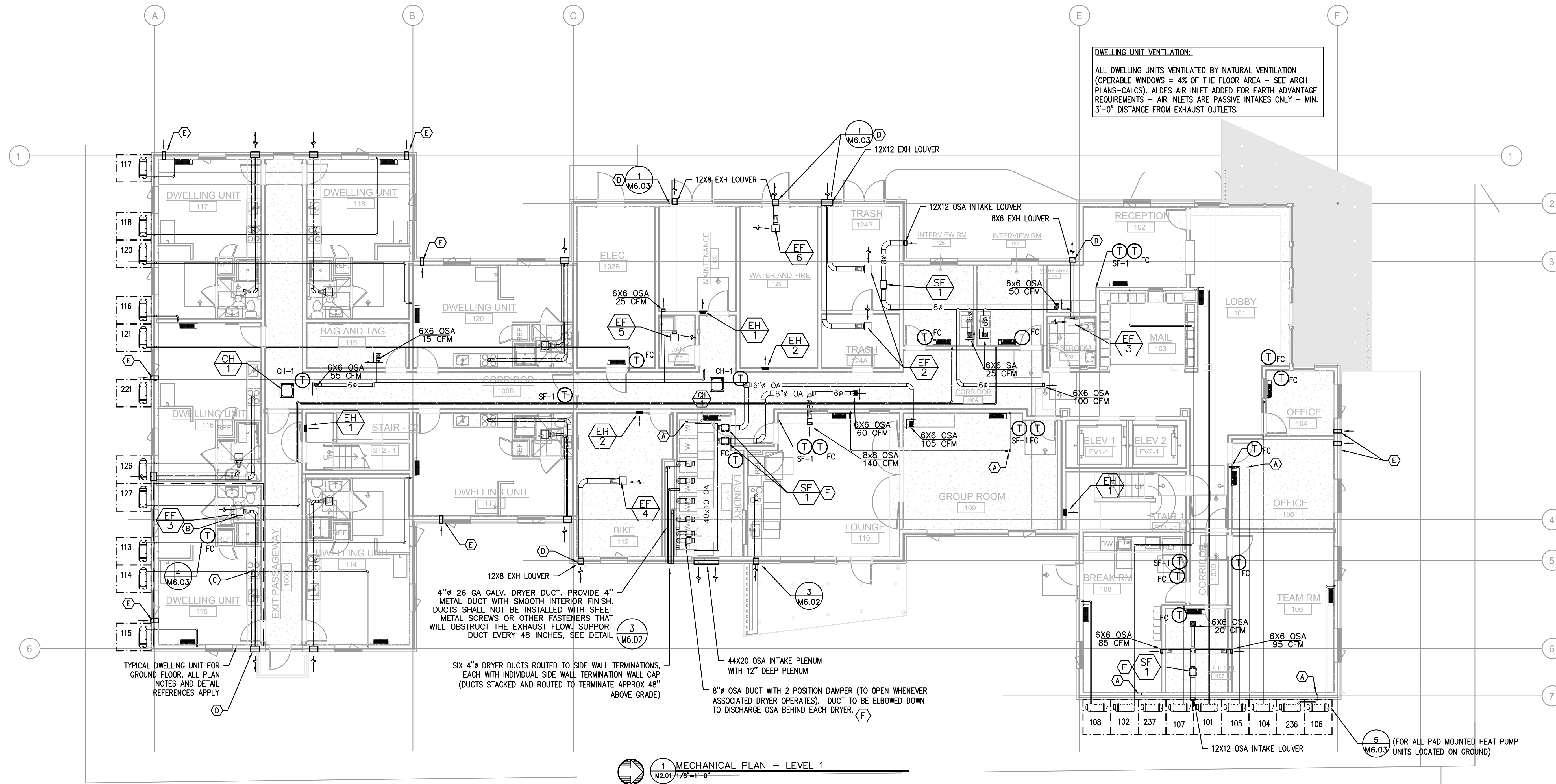


**KEY NOTES:**

- (A) — REFRIGERANT LINE SETS FROM CONDENSING UNITS ON LEVEL 1/ROOF, TO FAN COILS SEE UNIT NUMBERS AND ROUTING FOR EXACT PLACEMENT. CLT PENETRATION, 3-1/2" HOLE, ALL HOLES SPACED 2" MIN. APART.
- (B) — PANASONIC WHISPERGREEN CEILING FAN WITH 4" Ø DUCT TO ROOF OR EXTERIOR WALL TERMINATION VIA SOFFIT(S) PROVIDED. BACK DRAFT DAMPER INTEGRAL TO FAN, FAN TO OPERATE AT LOW SPEED CONTINUOUS (30CFM) AND INCREASE TO 80CFM WHEN BUILT-IN MOTION SENSOR IS ACTIVATED. INSULATED FINAL 5' OF DUCTWORK. NO DUCTWORK SHALL PENETRATE RATED ASSEMBLY. SEE (1) (2) M6.01 M6.01
- (C) — 6" Ø HOOD DUCT TO ROOF/EXTERIOR WALL TERMINATION VIA SOFFIT(S) PROVIDED. BACK DRAFT DAMPER INTEGRAL TO HOOD. INSULATED FINAL 5' OF DUCTWORK. NO DUCTWORK SHALL PENETRATE RATED ASSEMBLY. HOOD FAN TO OPERATE INTERMITTENTLY. PER 2019 OMSC 505.3 HOOD DUCTS SHALL HAVE SMOOTH INNER WALLS AND SHALL BE AIR TIGHT AND BE EQUIPPED WITH A BACKDRAFT DAMPER.
- (D) — EXTERIOR EXHAUST PLENUM — SEE (3) M6.01 MAINTAIN 36" CLEAR TO OPERABLE WINDOWS AND DOORS.
- (E) — ALDES AIR INLET, SEE (4) M6.02
- (F) — PROVIDE 12X12 ACCESS PANEL FOR SF-1.

**DWELLING UNIT VENTILATION:**  
 ALL DWELLING UNITS VENTILATED BY NATURAL VENTILATION (OPERABLE WINDOWS = 4% OF THE FLOOR AREA - SEE ARCH PLANS-CALCS). ALDES AIR INLET ADDED FOR EARTH ADVANTAGE REQUIREMENTS - AIR INLETS ARE PASSIVE INTAKES ONLY - MIN. 3'-0" DISTANCE FROM EXHAUST OUTLETS.



4" Ø 26 GA GALV. DRYER DUCT. PROVIDE 4" METAL DUCT WITH SMOOTH INTERIOR FINISH. DUCTS SHALL NOT BE INSTALLED WITH SHEET METAL SCREWS OR OTHER FASTENERS THAT WILL OBSTRUCT THE EXHAUST FLOW. SUPPORT DUCT EVERY 48 INCHES, SEE DETAIL (3) M6.02

SIX 4" Ø DRYER DUCTS ROUTED TO SIDE WALL TERMINATIONS, EACH WITH INDIVIDUAL SIDE WALL TERMINATION WALL CAP (DUCTS STACKED AND ROUTED TO TERMINATE APPROX 48" ABOVE GRADE)

44X20 OSA INTAKE PLENUM WITH 12" DEEP PLENUM  
 8" Ø OSA DUCT WITH 2 POSITION DAMPER (TO OPEN WHENEVER ASSOCIATED DRYER OPERATES). DUCT TO BE ELBOWED DOWN TO DISCHARGE OSA BEHIND EACH DRYER. (F)

**MECHANICAL PLAN - LEVEL 1**  
 M2.01 1/8"=1'-0"



**MEDIA** Consulting Engineers  
 2007 S.E. Ash St.  
 Portland, OR 97214  
 PHN: (503) 234-0548  
 FAX: (503) 234-0677  
 WWW.MEDIA-ENG.COM  
 CONTACT: Mark Denyer

**MERIDIAN GARDENS**  
 11250 SE DIVISION STREET  
 PORTLAND, OREGON 97266  
 CENTRAL CITY CONCERN

REVISION	DATE	REASON FOR ISSUE

**MECHANICAL PLAN - LEVEL 1**

**PERMIT SET**

DATE: 08/29/2022 PROJECT NUMBER: 203970

SHEET NUMBER

**M2.01**

