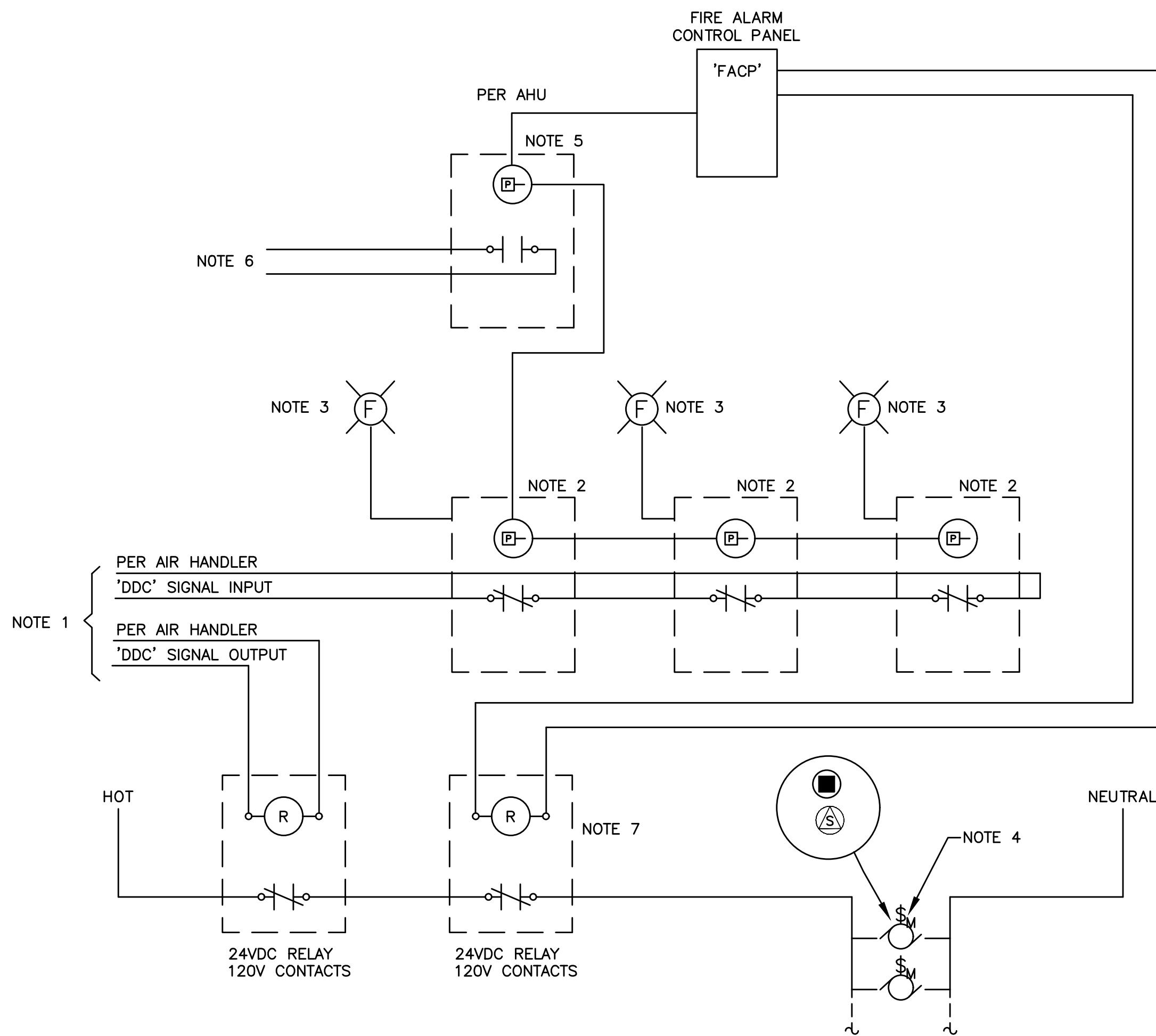


TELCOM SYMBOL LIST

SIGNAL SYMBOLS		FIRE ALARM SYMBOLS	
▼	TELEPHONE OUTLET +18" A.F.F.	☐	FIRE ALARM MANUAL PULL STATION, +48" A.F.F.
▼ ^W	WALL TELEPHONE OUTLET +48" A.F.F.	☐	MAGNETIC DOOR HOLDER
▽	CABLE FOR WIRELESS ACCESS POINT	☐-	SMOKE DETECTOR, DUCT, IONIZATION TYPE W/SAMPLING TUBE
▼ ^C	(2) PORTS PER OUTLET +18" A.F.F., U.O.N.	☐-	SMOKE DETECTOR, DUCT, PHOTO TYPE W/SAMPLING TUBE
▼ ^(X)	'C' INDICATES OUTLET ABOVE COUNTER	⊙	SMOKE DETECTOR, IONIZATION TYPE
▼ ^(X)	'X' INDICATES CABLE/PORT COUNT IN FP	⊙	SMOKE DETECTOR, PHOTO TYPE
☐	OUTLET IN FLOOR BOX (2) PORTS U.O.N.	⊙	HEAT DETECTOR, RATE-OF-RISE OR FIXED TEMP.
ABBREVIATIONS		☐	FIRE MAIN FLOW DETECTION SWITCH
A.F.F.	ABOVE FINISHED FLOOR	☐	FIRE MAIN TAMPER DETECTION SWITCH
CATV	CABLE TELEVISION	☐	FIRE ALARM BELL, +80" A.F.F., U.O.N.
CLG	CEILING MOUNTED	☐	FIRE ALARM HORN, +80" A.F.F.
(E)	EXISTING	☐	FIRE ALARM HORN/STROBE, +80" TO 96" A.F.F.
FACP	FIRE ALARM CONTROL PANEL	☐	FIRE ALARM STROBE, +80" TO 96" A.F.F., U.O.N.
FS	FLOW SWITCH (SEE FIRE ALARM SYMBOLS)	☐	FIRE ALARM INPUT MODULE
FSD	FIRE/SMOKE DAMPER	☐	FIRE ALARM OUTPUT MODULE
I R	INFRARED	☐	FIRE ALARM CONTROL PANEL
OFCI	OWNER FURNISHED, CONTRACTOR INSTALLED	☐	FIRE ALARM REMOTE ANNUNCIATOR
OFOI	OWNER FURNISHED, OWNER INSTALLED	☐	STAND ALONE - RESIDENTIAL SMOKE DETECTOR 120V W/ BATTERY
SD	SMOKE DAMPER	☐	CARBON MONOXIDE DETECTOR RESIDENTIAL 120V W/ BATTERY
TS	TAMPER SWITCH (SEE FIRE ALARM SYMBOLS)		
TYP.	TYPICAL		
U.O.N.	UNLESS OTHERWISE NOTED		

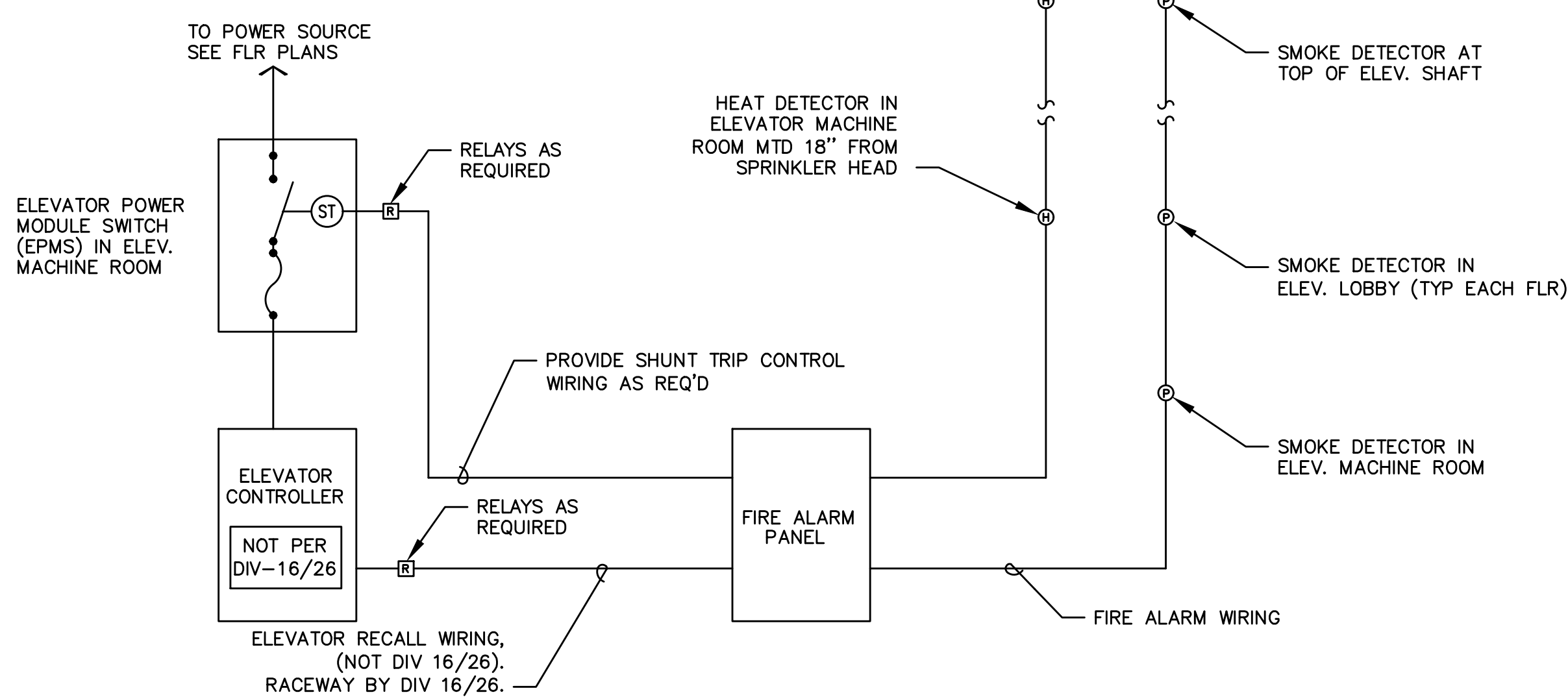
NOTE: SOME OF THE SYMBOLS AND ABBREVIATIONS ON THIS LIST MAY NOT APPLY TO THIS PROJECT.



1 FIRE SMOKE DAMPER CONTROL DIAGRAM

DETAIL NOTES

1. SIGNAL WIRING TO DDC CONTROLLER PER AHU.
2. DUCT SMOKE DETECTOR WITH AUX. CONTACT PROVIDED BY FIRE ALARM INSTALLER. PROGRAM FOR 20 SECOND TIME DELAY BEFORE SHUTDOWN OF FIRE-SMOKE DAMPERS &/OR SMOKE DAMPERS.
3. REMOTE LED INDICATOR MOUNTED ON CEILING. LABEL ASSOCIATED 'FSD' (FIRE-SMOKE DAMPER), 'SD' (SMOKE DAMPER) WITH FA ADDRESS & ASSOCIATED AIR HANDLING UNIT. INSTALL PER CODE AND/OR LOCAL AHJ REQUIREMENTS.
4. INSTALL RED INDICATOR PILOT LIGHT SWITCH ON WALL BELOW CEILING. LABEL ('FSD', 'SD') WITH ASSOCIATED AIR HANDLING UNIT AND 120V PANEL/CIRCUIT #.
5. AHU SMOKE DETECTOR WITH AN AUXILIARY CONTACT PROVIDED BY FIRE ALARM INSTALLER. INSTALLATION BY MECHANICAL.
6. CONNECT TO AHU FAN SHUTDOWN.
7. ONE RELAY PER SERIES OF 'FSD' AND 'SD' PER ASSOCIATED AHU.



NOTES

1. CONNECT HEAT DETECTORS IN MACHINE RM AND ELEVATOR SHAFT SUCH THAT AN ALARM CONDITION WILL ACTIVATE SHUNT TRIP DEVICE IN 'EMPS'.
2. CONNECT SMOKE DETECTORS IN MACHINE ROOM, ELEVATOR LOBBYS, AND ELEVATOR SHAFT SUCH THAT AN ALARM CONDITION WILL ACTIVATE ELEVATOR RECALL SYSTEM. COORDINATE WITH ELEVATOR SUPPLIER.

2 ELEVATOR RECALL & AUTO DISCONNECT DETAIL

PART OF ALTERNATE BID



BLUE ROOM ARCHITECTURE & DESIGN, P.S.

HISTORIC SALTESE SCHOOLHOUSE
BOX 628, VERADALE, WA 99037
(509) 456-6800

www.brdstudio.com

CIVIL ENGINEER

FOOD SERVICE CONSULTANT
DK DESIGN, INC.
15040 NE 95TH ST., #101
REDMOND, WA 98052
(425) 881-8622

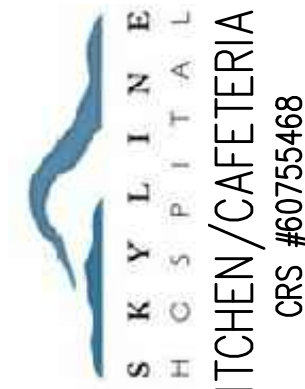
MECHANICAL ENGINEERS
MFIA INC CONSULTING ENGINEERS
2007 SE ASH STREET
PORTLAND, OR 97214
(503) 234-0548

ELECTRICAL ENGINEER
MFIA INC CONSULTING ENGINEERS
2007 SE ASH STREET
PORTLAND, OR 97214
(503) 234-0548



THIS PROJECT INCLUDES THE INTERIOR REMODEL OF AN EXISTING CRITICAL ACCESS HOSPITAL FACILITY THAT IS TO REMAIN OPERATIONAL AT ALL TIMES. CONTRACTOR BIDS SHALL BE BASED ON VERIFICATION OF EXISTING ON-SITE CONDITIONS. UNINTERRUPTED ESSENTIAL HEALTHCARE SERVICES DURING THE CONSTRUCTION PERIOD, ONGOING COORDINATION OF ALL RELATED TRADES FOR CURRENT CODE COMPLIANCE, PATIENT SAFETY, JURISDICTIONAL REVIEW, SYSTEM PERFORMANCE AND UNFORESEEN CLINICAL DISRUPTIONS.

INTERIOR REMODEL FOR:



211 SKYLINE DRIVE
WHITE SALMON, WASHINGTON 98672

PROJECT NUMBER: 18002c
DATE: 2/14/2018
DRAWN: GMA
REVISIONS: X/X/17

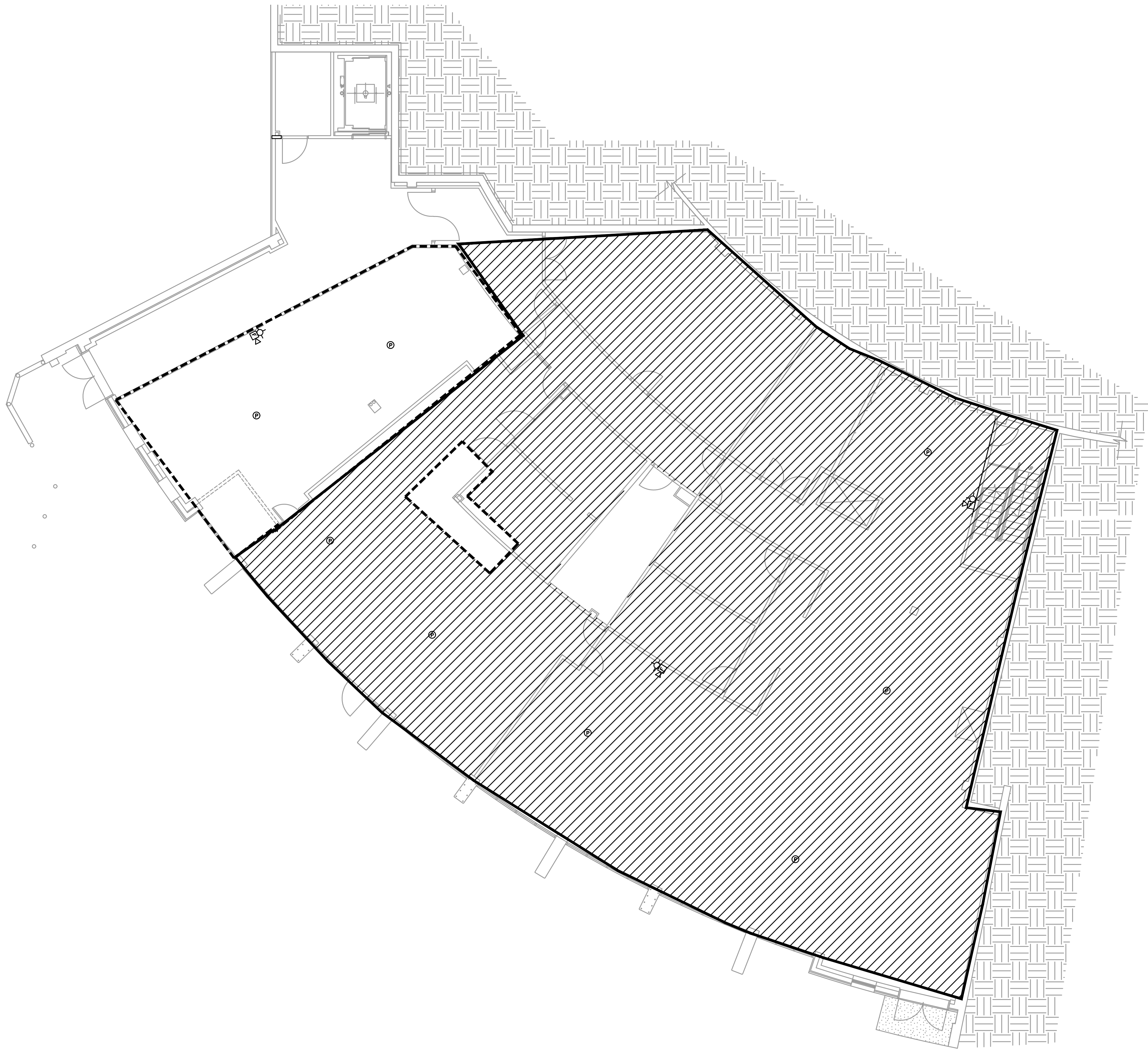
PERMIT SET

TELCOM
SYMBOLS
LIST

T1.0

© 2018 BLUE ROOM ARCHITECTURE & DESIGN, P.S.

MEIA
Consulting Engineers
2007 S.E. Ash St.
Portland, OR 97214
PH: (503) 234-0548
FAX: (503) 234-0877
INC. WWW.MFIA-ENG.COM
CONTACT: GARY ADOVNIK



1 BASEMENT DEMO PLAN
E1.1 SCALE: 1/8" = 1'-0"

MEIA Consulting Engineers
2007 S.E. Ash St.
Portland, OR 97214
PHN: (503) 234-0548
FAX: (503) 234-0877
INC. WWW.MFIA-ENG.COM
CONTACT: CHRIS WINER



BLUE ROOM ARCHITECTURE & DESIGN, P.S.

HISTORIC SALTESE SCHOOLHOUSE
BOX 628, VERADALE, WA 99037
(509) 456-6800

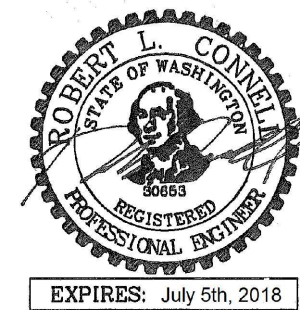
www.brdstudio.com

CIVIL ENGINEER

FOOD SERVICE CONSULTANT
DK DESIGN, INC.
15040 NE 95TH ST., #101
REDMOND, WA 98052
(425) 881-8622

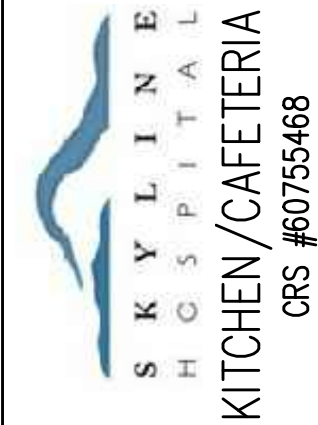
MECHANICAL ENGINEER
MFIA INC CONSULTING ENGINEERS
2007 SE ASH STREET
PORTLAND, OR 97214
(503) 234-0548

ELECTRICAL ENGINEER
MFIA INC CONSULTING ENGINEERS
2007 SE ASH STREET
PORTLAND, OR 97214
(503) 234-0548



THIS PROJECT INCLUDES THE INTERIOR REMODEL OF AN EXISTING CRITICAL ACCESS HOSPITAL FACILITY THAT IS TO REMAIN OPERATIONAL AT ALL TIMES. CONTRACTOR BIDS SHALL BE BASED ON VERIFICATION OF EXISTING ONSITE CONDITIONS. UNINTERRUPTED ESSENTIAL HEALTHCARE SERVICES DURING THE CONSTRUCTION PERIOD, ONGOING COORDINATION OF ALL RELATED TRADES FOR CURRENT CODE COMPLIANCE, PATIENT SAFETY, JURISDICTIONAL REVIEW, SYSTEM PERFORMANCE AND UNFORESEEN CLINICAL DISRUPTION(S).

INTERIOR REMODEL FOR:



211 SKYLINE DRIVE
WHITE SALMON, WASHINGTON 98672

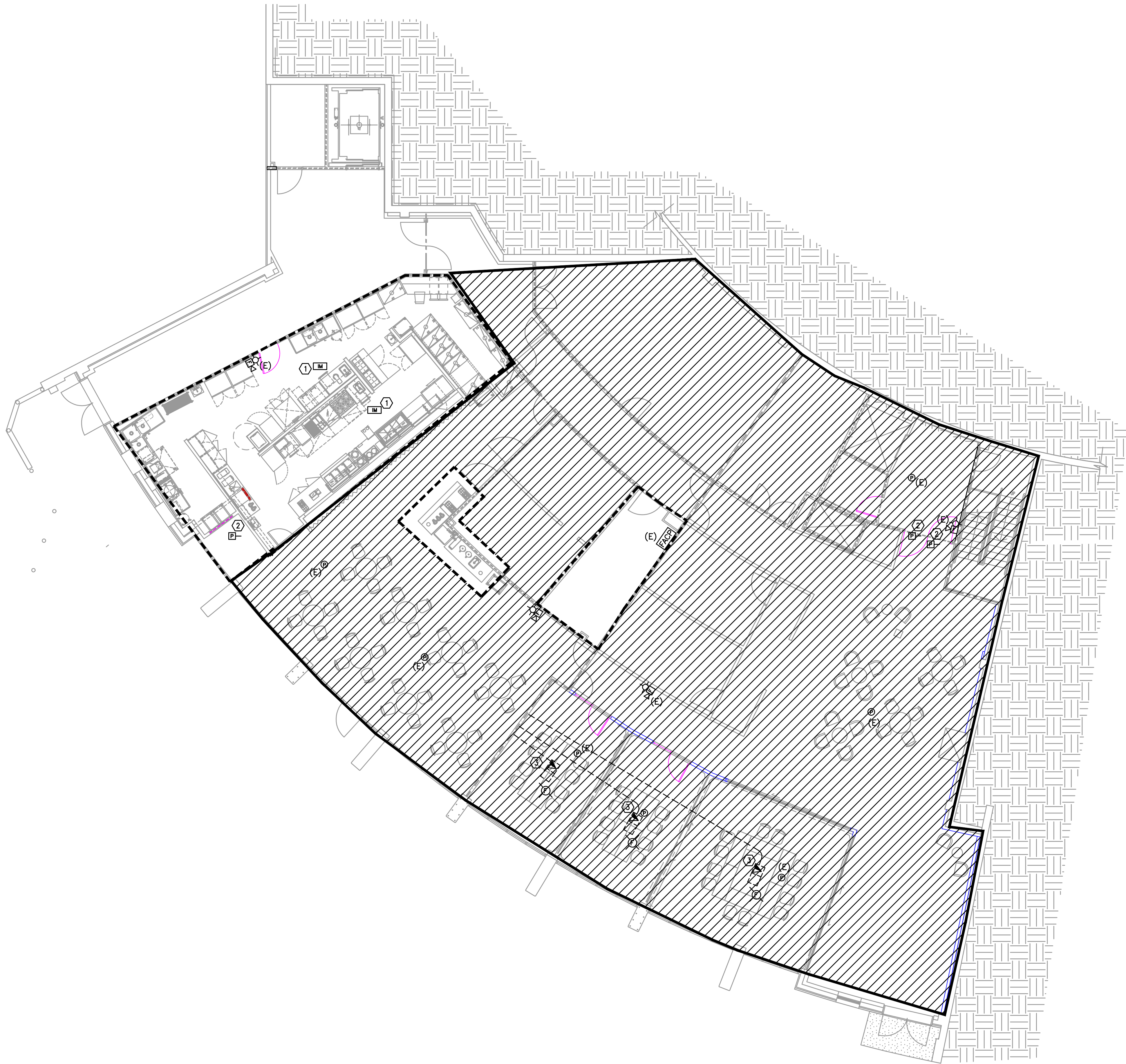
PROJECT NUMBER: 18002c
DATE: 2/14/2018
DRAWN: CW
REVISIONS: X/X/17

PERMIT SET

TELCOM
DEMO
PLAN

T1.1

© 2018 BLUE ROOM ARCHITECTURE & DESIGN, P.S.



- GENERAL NOTES:
- A. FOR VOICE/DATA OUTLETS PROVIDE A SINGLE GANG MUD-RING WITH A 1" CONDUIT FROM THE TOP OF THE MUD-RING TO ACCESSIBLE CEILING SPACE. TERMINATE CONDUIT WITH END CONNECTORS AND THREAD ON PLASTIC BUSHING FOR CABLE PROTECTION. OUTLET SHALL BE AT THE SAME HEIGHT AS ADJACENT POWER OUTLET AND LESS THAN 18" SEPARATION. COORDINATE WITH ELECTRICAL.
 - B. COORDINATE ALL DEVICE LOCATIONS WITH LATEST ARCHITECTURAL INTERIOR ELEVATIONS TO VERIFY DEVICES WILL NOT BE OBSTRUCTED.
 - C. PROVIDE PULL STRING IN ALL CONDUITS FOR LATER USE.
 - D. ALL PENETRATIONS THROUGH FIREWALLS WILL NEED FIRESTOP OF THE APPROPRIATE RATING.

- NOTES:
- 1. INPUT MODULE TO CONNECT TO KITCHEN HOOD AND FIRE ALARM SYSTEM.
 - 2. COORDINATE EXACT LOCATION OF EXISTING DUCT DETECTOR TO RELOCATE WITH MECHANICAL PLANS.
 - 3. FLOOR BOX SPECIFIED AND LOCATED PER ELECTRICAL ROUTE (2) 1" CONDUITS FROM EACH BOX TO ACCESSIBLE CEILING SPACE. CONDUITS CAN NOT BE "DAISY-CHAINED" BETWEEN BOXES.

1 BASEMENT TELCOM PLAN
T3.1 SCALE: 1/8" = 1'-0"

Consulting Engineers
2007 S.E. Ash St.
Portland, OR 97214
PH: (503) 234-0648
FAX: (503) 234-0677
WWW.MFIA-ENG.COM
CONTACT: GARY ADOVNIK



BLUE ROOM ARCHITECTURE & DESIGN, P.S.

HISTORIC SALTESE SCHOOLHOUSE
BOX 628, VERADALE, WA 99037
(509) 456-6800

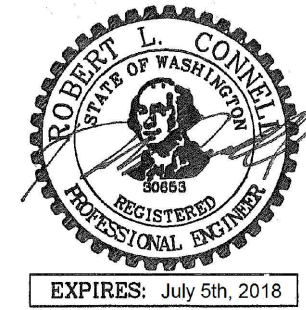
www.brdstudio.com

CIVIL ENGINEER

FOOD SERVICE CONSULTANT
DK DESIGN, INC.
15040 NE 95TH ST., #101
REDMOND, WA 98052
(425) 881-8622

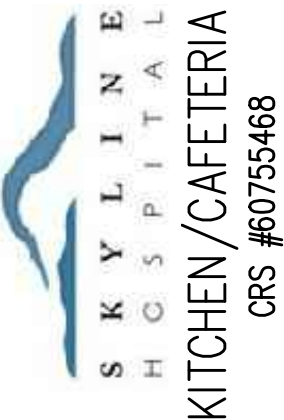
MECHANICAL ENGINEER
MFIA INC CONSULTING ENGINEERS
2007 SE ASH STREET
PORTLAND, OR 97214
(503) 234-0548

ELECTRICAL ENGINEER
MFIA INC CONSULTING ENGINEERS
2007 SE ASH STREET
PORTLAND, OR 97214
(503) 234-0548



THIS PROJECT INCLUDES THE INTERIOR REMODEL OF AN EXISTING CRITICAL ACCESS HOSPITAL FACILITY THAT IS TO REMAIN OPERATIONAL AT ALL TIMES. CONTRACTOR BIDS SHALL BE BASED ON VERIFICATION OF EXISTING ONSITE CONDITIONS. UNINTERRUPTED ESSENTIAL HEALTHCARE SERVICES DURING THE CONSTRUCTION PERIOD, ONGOING COORDINATION OF ALL RELATED TRADES FOR CURRENT CODE COMPLIANCE, PATIENT SAFETY, JURISDICTIONAL REVIEW, SYSTEM PERFORMANCE AND UNFORESEEN CLINICAL DISRUPTIONS).

INTERIOR REMODEL FOR:



211 SKYLINE DRIVE
WHITE SALMON, WASHINGTON 98672

PROJECT NUMBER: 18002c
DATE: 2/14/2018
DRAWN: GMA
REVISIONS: X/X/17

PERMIT SET

BASEMENT
TELCOM
PLAN

T3.1

© 2018 BLUE ROOM ARCHITECTURE & DESIGN, P.S.