



BLUE ROOM ARCHITECTURE & DESIGN, P.S.

HISTORIC SALTESE SCHOOLHOUSE
BOX 628, VERADALE, WA 99037
(509) 456-6800

www.brdstudio.com

CIVIL ENGINEER

FOOD SERVICE CONSULTANT

DK DESIGN, INC.
15040 NE 95TH ST., #101
REDMOND, WA 98052
(425) 881-8622

MECHANICAL ENGINEERS

MFA INC CONSULTING ENGINEERS
2007 SE ASH STREET
PORTLAND, OR 97214
(503) 234-0548

ELECTRICAL ENGINEERS

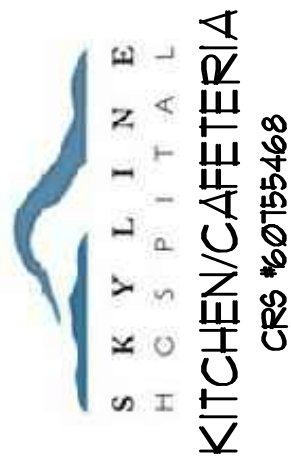
MFA INC CONSULTING ENGINEERS
2007 SE ASH STREET
PORTLAND, OR 97214
(503) 234-0548

2/14/18



THIS PROJECT INCLUDES THE INTERIOR REMODEL OF AN EXISTING CRITICAL ACCESS HOSPITAL FACILITY THAT IS TO REMAIN OPERATIONAL AT ALL TIMES. CONTRACTOR BIDS SHALL BE BASED ON VERIFICATION OF EXISTING ON-SITE CONDITIONS. UNINTERRUPTED ESSENTIAL HEALTHCARE SERVICES DURING THE CONSTRUCTION PERIOD, ONGOING COORDINATION OF ALL RELATED TRADES FOR CURRENT CODE COMPLIANCE, PATIENT SAFETY, JURISDICTIONAL REVIEW, SYSTEM PERFORMANCE AND UNFORESEEN CLINICAL DISRUPTION(S).

INTERIOR REMODEL FOR:



211 SKYLINE DRIVE
WHITE SALYON, WASHINGTON 98672

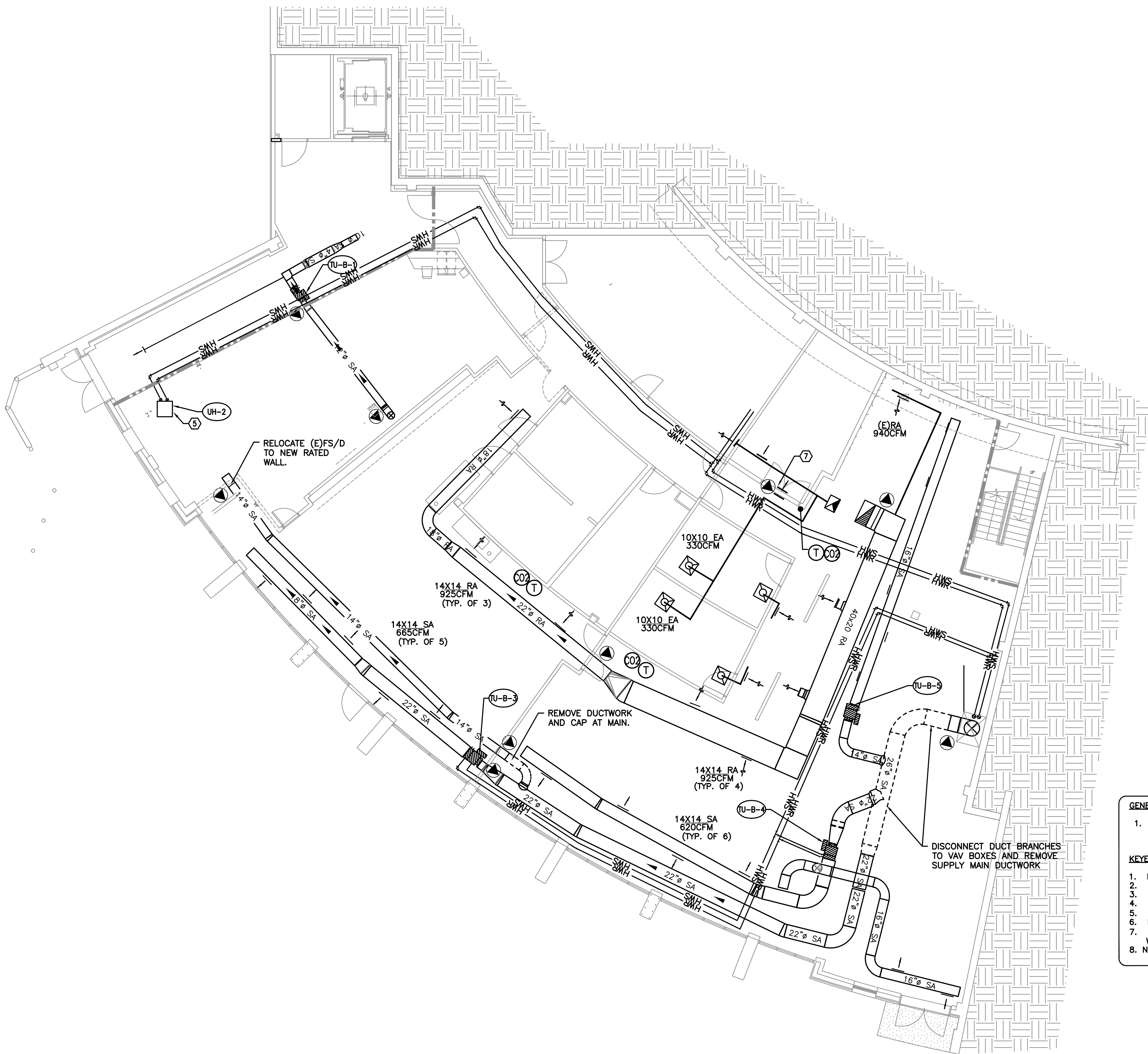
PROJECT NUMBER: 18002c
DATE: 2/14/2018
DRAWN: TB
REVISIONS:

PERMIT SET

BASEMENT
DEMO MECHANICAL
PLAN

M1.0

© 2018 BLUE ROOM ARCHITECTURE & DESIGN, P.S.



GENERAL NOTES:

1. CONTRACTOR TO VERIFY EXISTING CONDITIONS PRIOR TO COMMENCING ANY WORK.

KEYED NOTES:

1. NOT USED.
2. NOT USED.
3. NOT USED.
4. NOT USED.
5. REMOVE (E)UNIT HEATER AND CONTROLS. CAP OFF (E)HWS/HWR.
6. NOT USED.
7. REMOVE (E)TRANSFER GRILLES AND FIRE/SMOKE DAMPER. PATCH WALL.
8. NOT USED.

1 BASEMENT MECHANICAL DEMO PLAN
M1.0 1/8"=1'-0"

MFA
Consulting Engineers
2007 S.E. Ash St.
Portland, OR 97214
PHN: (503) 234-0548
FAX: (503) 234-0677
INC. WWW.MFA-ENG.COM
CONTACT: TAKAKO BAKER