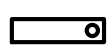


ELECTRICAL SYMBOL LIST

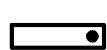


LIGHTING SYMBOLS

2X4 LIGHT FIXTURE, RECESSED



2X4 LIGHT FIXTURE, RECESSED - EMERGENCY



4FT LIGHT FIXTURE, SURFACE MOUNT



4FT LIGHT FIXTURE, SURFACE MOUNT - EMERGENCY



4FT LIGHT FIXTURE, STRIP



4FT LIGHT FIXTURE, STRIP - EMERGENCY



DOWNLIGHT FIXTURE, RECESSED



DOWNLIGHT FIXTURE, RECESSED - EMERGENCY



FLUORESCENT LIGHT FIXTURE, WALL MOUNT



LIGHT FIXTURE, CEILING MOUNT



LIGHT FIXTURE, WALL MOUNT



LIGHT FIXTURE, WALL SCONCE



EXIT SIGN, UNIVERSAL MOUNT, W/ DIRECTIONAL ARROW



EXIT SIGN, WALL MOUNT, +8'-0" A.F.F.



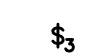
EMERGENCY LIGHT W/ BATTERY PACK, +8'-0" A.F.F.



SWITCH, SPST +48" A.F.F.



SWITCH, DPST +48" A.F.F.



SWITCH, 3-WAY +48" A.F.F.



SWITCH, DIMMER +48" A.F.F.



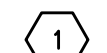
SWITCH, KEY-OPERATED +48" A.F.F.



PHOTOCELL CONTROL

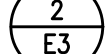


OCCUPANCY SENSOR CONTROL



NOTATIONS

DRAWING NOTE



DETAIL REFERENCE: TOP=DETAIL NO., BOTTOM=SHEET NO.



MECHANICAL EQUIPMENT MARK NO. (SEE EQUIPMENT SCHEDULE)



EQUIPMENT NO. (SEE EQUIPMENT SCHEDULE)



EQUIPMENT NO. (SEE EQUIPMENT SCHEDULE)



POWER SYMBOLS

RECEPTACLE, DUPLEX +18" A.F.F.



RECEPTACLE, QUAD +18" A.F.F.



RECEPTACLE, DUPLEX +6" ABV COUNTER



RECEPTACLE, DUPLEX +18" A.F.F. (ONE OUTLET SWITCHED)



RECEPTACLE, DUPLEX +18" A.F.F. (DEDICATED)



RECEPTACLE, DUPLEX, PEDESTAL MOUNT



RECEPTACLE, DUPLEX, FLUSH FLOOR MOUNT



ELECTRICAL CONNECTION



MAGNETIC CONTACTOR



RELAY



PUSHBUTTON STATION



JUNCTION BOX



THERMOSTAT



DISCONNECT, NON-FUSED



DISCONNECT, FUSED



ELECTRICAL CONNECTION



ELECTRICAL CONNECTION, SINGLE MOTOR



ELECTRICAL DISTRIBUTION PANEL, RECESSED



MISCELLANEOUS PANEL, RECESSED



FLUSH FLOOR BOX (W/ DEVICES AS SHOWN ON PLAN)

ABBREVIATIONS

'A' LIGHT FIXTURE TYPE (SEE FIXTURE LIST)

A.F.F. ABOVE FINISHED FLOOR

A.T.S. TRANSFER SWITCH, AUTOMATIC

C CONDUIT

C.O. CONDUIT ONLY

CATV CABLE TELEVISION

CB CIRCUIT BREAKER

CCTV CLOSED CIRCUIT TELEVISION

C.T. CURRENT TRANSFORMER

(E) EXISTING

E.L. EMERGENCY LIGHT

FACP FIRE ALARM CONTROL PANEL

G.F.I. GROUND FAULT INTERRUPTER

GND GROUND

HP HORSEPOWER

I.G. ISOLATED GROUND

I R INFRARED

JB JUNCTION BOX

MCB MAIN CIRCUIT BREAKER

MLO MAIN LUGS ONLY

(N) NEW

N.I.C. NOT IN CONTRACT

N.L. NIGHT LIGHT

OL OVERLOAD

P POLE

P.A. PUBLIC ADDRESS

PH PHASE

T.V.S.S. TRANSIENT VOLTAGE SURGE SUPPRESSOR

U.G. UNDERGROUND

U.O.N. UNLESS OTHERWISE NOTED

WIRE

W.G. WIRE GUARD

W.P. WEATHERPROOF



WIRING SYMBOLS



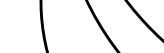
PANEL & CIRCUIT NUMBER



HOMERUN TO PANEL



CONDUCTOR SIZE (IF OTHER THAN #12)



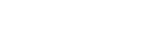
PHASE CONDUCTOR



NEUTRAL CONDUCTOR



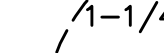
GROUND CONDUCTOR



CONCEALED CONDUIT



CONDUIT SIZE



CONDUIT (UNDER SLAB OR FLOOR)



FLEXIBLE CONNECTION



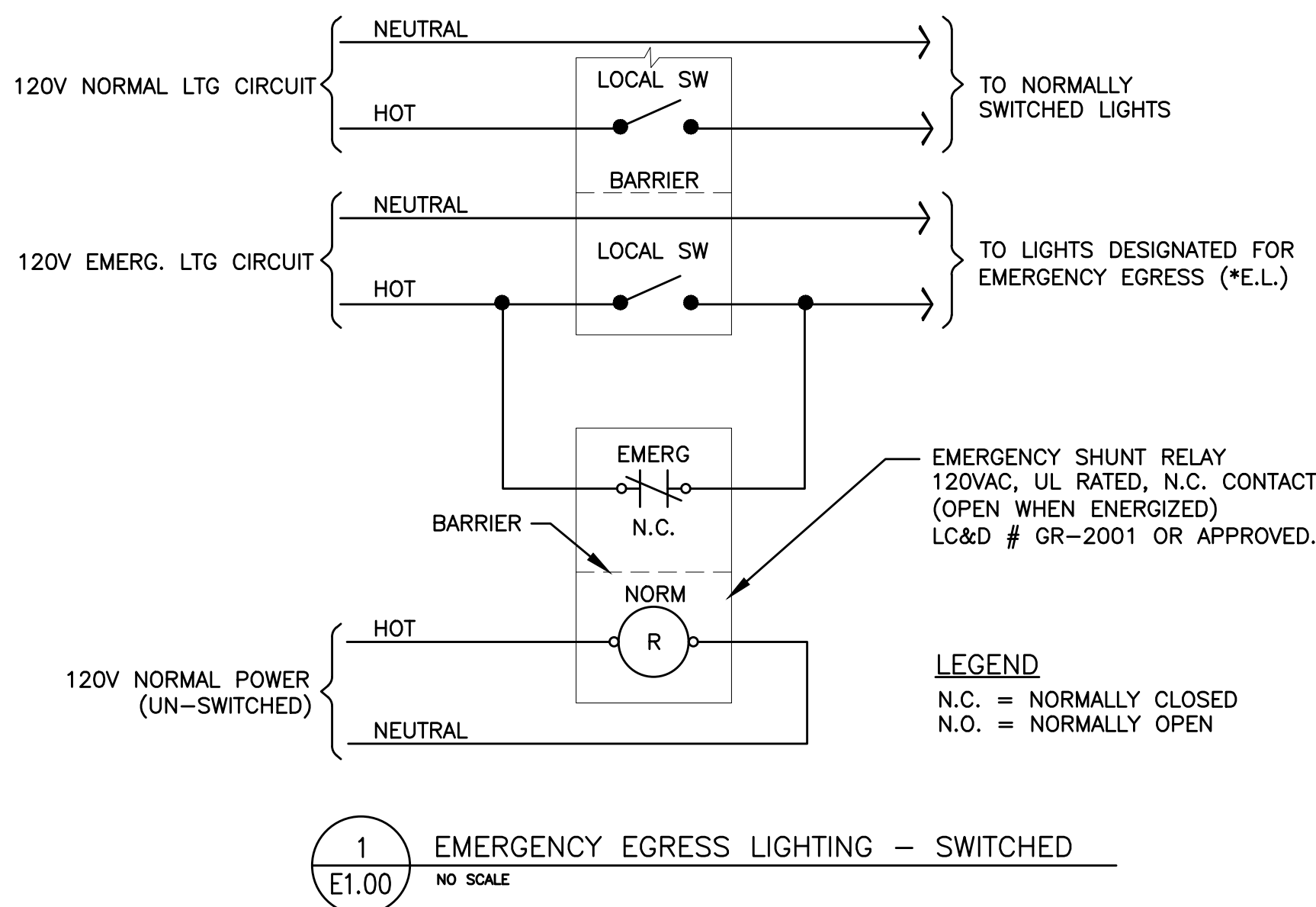
CONDUIT, STUBBED & CAPPED

NOTE: THE SYMBOLS AND ABBREVIATIONS ON THIS LIST MAY OR MAY NOT APPLY TO THIS PROJECT.

| LIGHTING FIXTURE LIST | | | | | |
|-----------------------|------------------------|--|----------------|--|---|
| TYPE | LAMP | MANUFACTURER | CATALOG NUMBER | DESCRIPTION | OPTIONS |
| L1 L1E | LED 3000LM 3500K | LITHONIA (OR APPROVED OTHER) | 26TL4 SERIES | TYPE :2X4 TROFFER MOUNTING :RECESSED HOUSING :STEEL LENS/REFL :#12 PATTERN ACRYLIC VOLTAGE :#VOLT BALLAST :LED DRIVER (0-10 DIMMING) | REFER TO LIGHTING NOTE 'G' FOR ADDITIONAL INFORMATION REGARDING FIXTURE TYPE 'L1E' |
| L2 L2E | LED 3000LM 3500K | LITHONIA (OR APPROVED OTHER) | 26TL2 SERIES | TYPE :2X2 TROFFER MOUNTING :RECESSED HOUSING :STEEL LENS/REFL :#12 PATTERN ACRYLIC VOLTAGE :#VOLT BALLAST :LED DRIVER (0-10 DIMMING) | REFER TO LIGHTING NOTE 'G' FOR ADDITIONAL INFORMATION REGARDING FIXTURE TYPE 'L2E' |
| L3 L3E | LED 3000LM 3500K | CORELITE (OR APPROVED OTHER) | RZLNB30LSERIES | TYPE :8FT LINEAR DIRECT MOUNTING :SUSPENDED HOUSING :STEEL LENS/REFL :MICRO BAFFLE PRISM LENS VOLTAGE :#VOLT BALLAST :LED DRIVER (0-10 DIMMING) | REFER TO LIGHTING NOTE 'G' FOR ADDITIONAL INFORMATION REGARDING FIXTURE TYPE 'L3E' MOUNTING HEIGHT PER ARCHITECT |
| L4 L4E | LED 2000LM 3500K | LIGHTOLIER (OR APPROVED OTHER) | P4RDL SERIES | TYPE :4" DIA. DOWNLIGHT MOUNTING :RECESSED HOUSING :STEEL LENS/REFL :CLEAR SPECULAR DIFFUSER VOLTAGE :#VOLT BALLAST :LED DRIVER (0-10 DIMMING) | REFER TO LIGHTING NOTE 'G' FOR ADDITIONAL INFORMATION REGARDING FIXTURE TYPE 'L4E' |
| X | LED (GREEN LETTERS) | EVERGLOW LIGHTING (OR APPROVED OTHER) | 90.8924 SERIES | TYPE :EXIT SIGN (PHOTOLUMINESCENT) MOUNTING :UNIVERSAL HOUSING :DIE-CAST ALUMINUM LENS/REFL :SINGLE FACE VOLTAGE :N/A BALLAST :N/A | TYPE 'X2' SIMILAR TO 'X1' EXCEPT WITH DUAL FACE AND/OR DIRECTIONAL ARROWS VERIFY FRAME TYPE & COLOR TO MEET SCHOOL DISTRICT STANDARDS NO SUBSTITUTIONS. |
| | N/A | | | | |

GENERAL LIGHTING NOTES:

- ALL DRAWINGS ARE DIAGRAMMATICAL UNLESS OTHERWISE NOTED. CONTRACTOR SHALL BE RESPONSIBLE TO REVIEW ALL PROJECT DOCUMENTS, INCLUDING SPECIFICATIONS AND COORDINATE WORK WITH ALL OTHER TRADES.
- REFER TO ARCHITECTURAL REFLECTED CEILING PLANS FOR EXACT FIXTURE LOCATION.
- ALL FIXTURES SHALL MEET SCHOOL DISTRICT STANDARDS. CONTRACTOR SHALL SUBMIT ALL PRODUCTS FOR APPROVAL PRIOR TO ROUGH IN.
- ALL FINISHES SHALL BE PER ARCHITECT'S DIRECTION.
- ALL LAMPS SHALL BE 3500 KELVIN.
- FIXTURES ON THE LIGHTING PLANS THAT ARE DESIGNATED AS EMERGENCY EGRESS LIGHTING SHALL BE CIRCUITED TO CLOSEST EXISTING EMERGENCY LIGHTING CIRCUIT.
- FOR PROPERTIES THAT DO NOT HAVE AN EMERGENCY STANDBY POWER SYSTEM, FIXTURES DESIGNATED AS EGRESS LIGHTING, SHALL BE EQUIPPED WITH BATTERY BACKUP POWER, EITHER INTEGRAL OR REMOTE.



BBT ARCHITECTS

1140 SW Simpson Ave., Suite 200
Bend, Oregon 97702
1 541.382.5535 | 1 541.389.8033

02.21.2020



MFA Consulting Engineers
2007 S.E. Ash St.
Portland, OR 97214
PH: (503) 234-0548
FAX: (503) 234-0677
INC., WWW.MFA-ENG.COM
CONTACT: MFA ENGINEERS

SALEM-KEIZER
WHITEAKER MIDDLE
SCHOOL

1605 LOCKHAVEN DR
NE
KEIZER, OR 97303

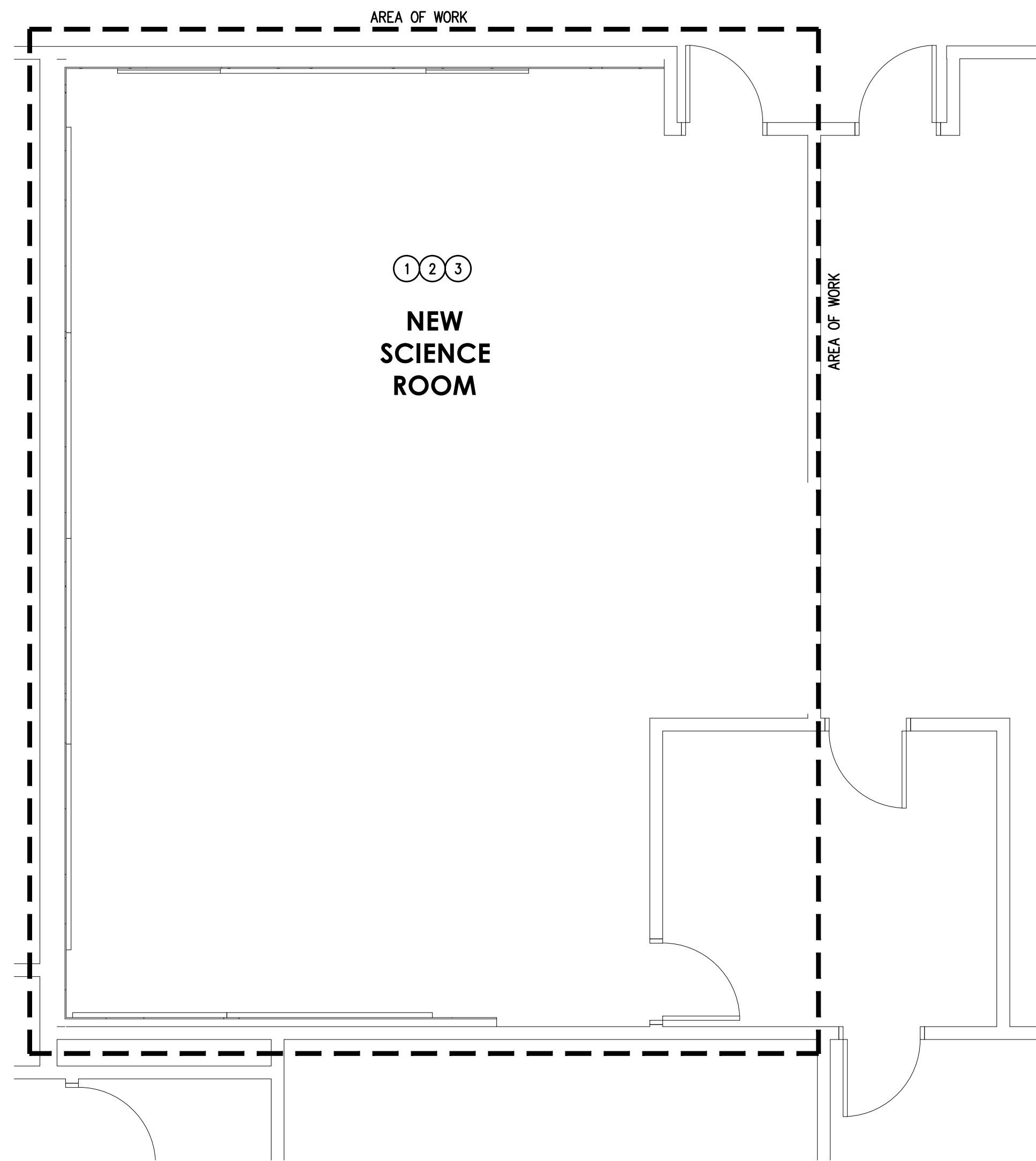
| No. | Description | Date |
|-----|-------------|------|
| | | |
| | | |
| | | |
| | | |
| | | |
| | | |
| | | |

Project Number 1920
Date 02.21.2020

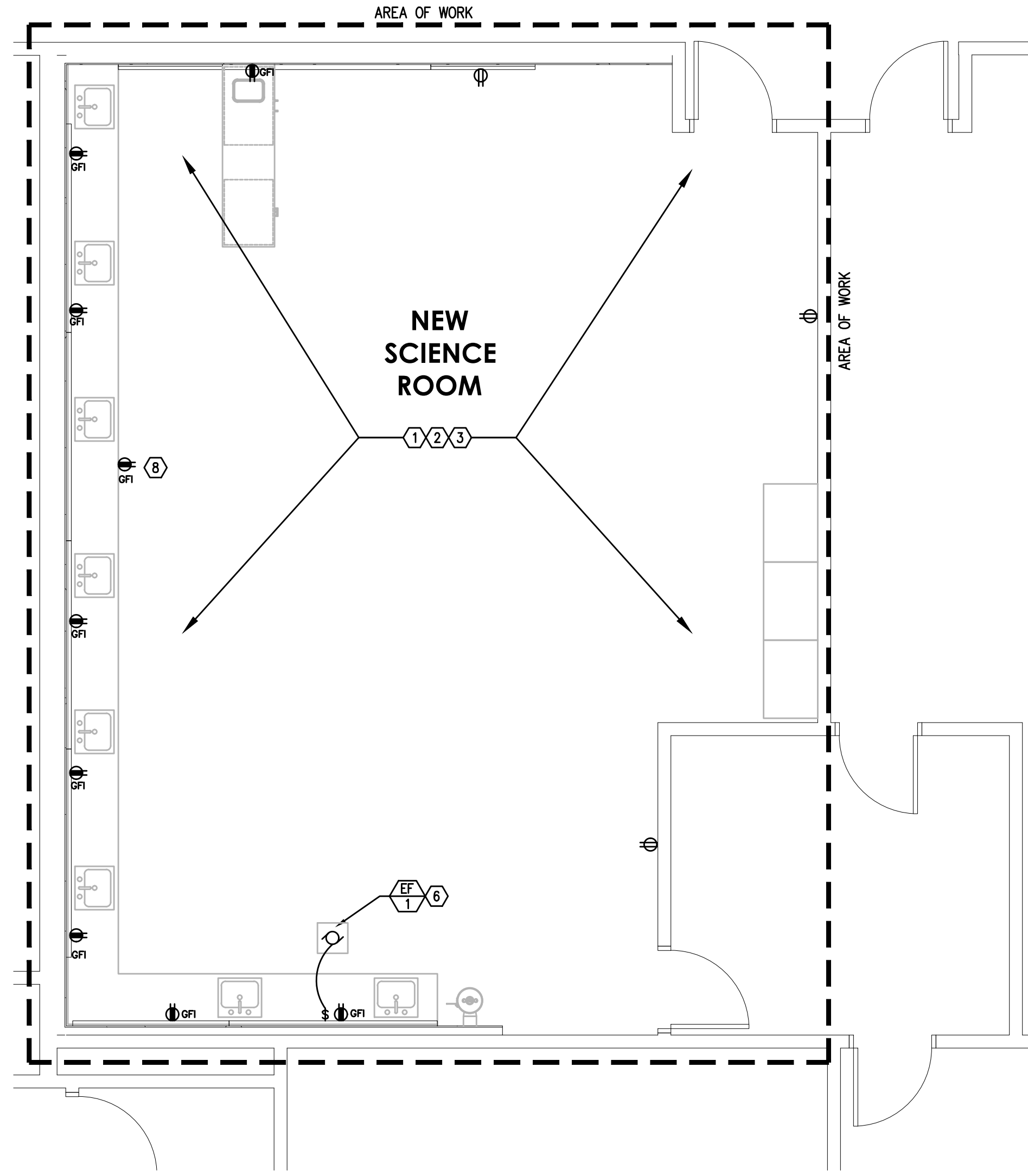
PERMIT SET

ELECTRICAL
SYMBOL LIST &
SCHEDULES

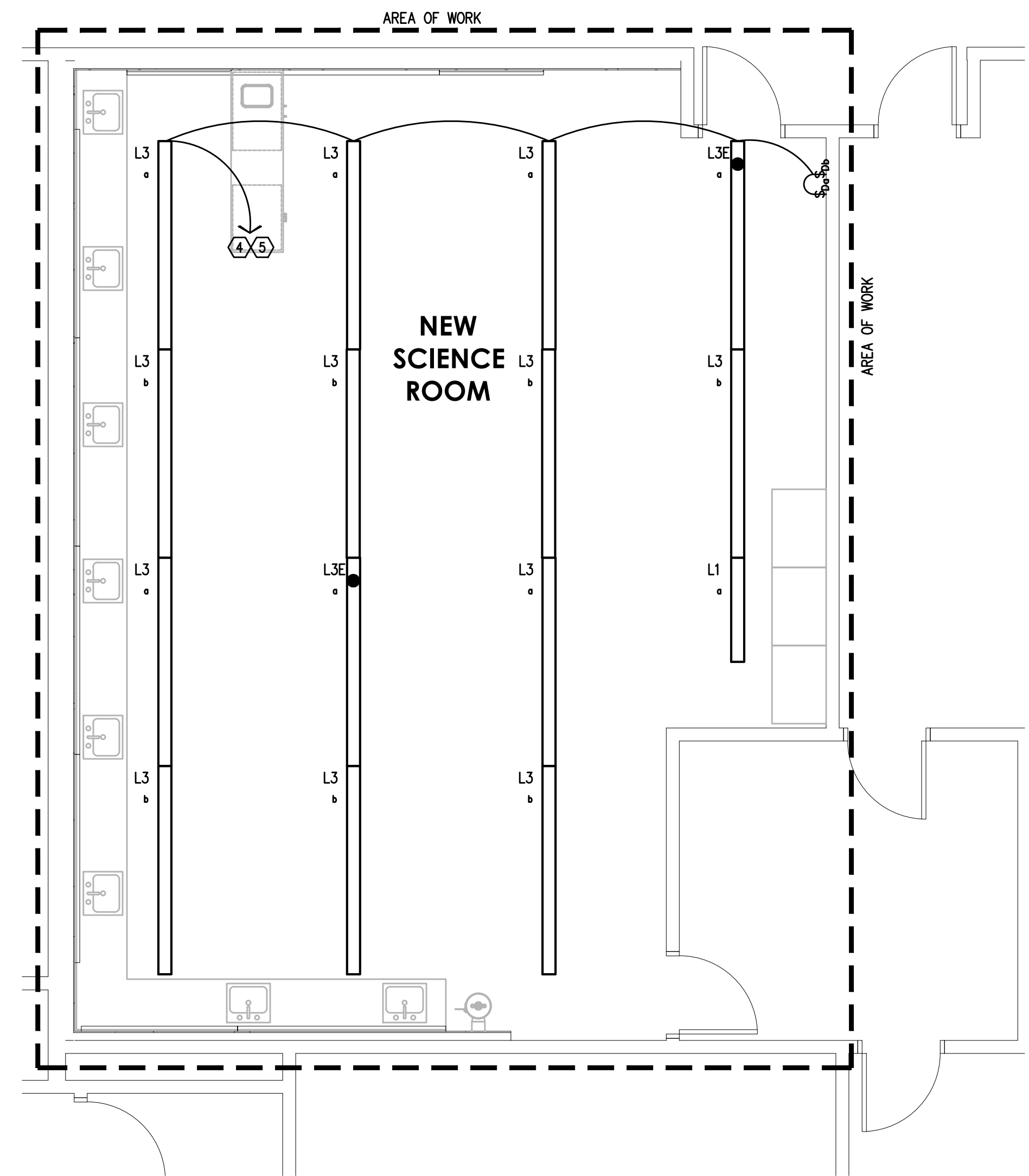
E1.00



1
E2.01
ENLARGED SCIENCE RM
ELECTRICAL DEMO PLAN
SCALE: 1/4" = 1'-0"



2
E2.01
ENLARGED SCIENCE RM
POWER PLAN
SCALE: 1/4" = 1'-0"



3
E2.01
ENLARGED SCIENCE RM
LIGHTING PLAN
SCALE: 1/4" = 1'-0"

GENERAL DEMOLITION NOTES:

- UNLESS OTHERWISE NOTED, ALL PLANS ARE DIAGRAMMATICAL. CONTRACTOR SHALL FIELD VERIFY ALL EXISTING CONDITIONS AS THEY RELATE TO THE PROJECT PRIOR TO THE START OF ANY WORK.
- UNLESS OTHERWISE NOTED, REMOVE ALL ELECTRICAL DEVICES AND ASSOCIATED ITEMS IN CONFLICT WITH NEW CONSTRUCTION. MODIFY CIRCUITING AS REQUIRED TO MAINTAIN FEED TO DOWNSTREAM DEVICES OR FIXTURES TO REMAIN.
- COORDINATE WITH THE MECHANICAL CONTRACTOR FOR DISCONNECTION/RECONNECTION OF ANY AND ALL MECHANICAL EQUIPMENT TO BE REMOVED OR REPLACED.

DEMOLITION SHEET NOTES:

- DISCONNECT AND REMOVE ALL ELECTRICAL DEVICES TO AREAS SCHEDULED FOR REMOVAL. REMOVE WIRING AS FAR BACK AS NECESSARY (IE: NEAREST DEVICE TO REMAIN).
- DISCONNECT POWER TO MECHANICAL EQUIPMENT TO BE REMOVED AND/OR REPLACED. MAINTAIN EXISTING CIRCUIT CONDUCTORS FOR RECONNECTION OF REPLACED EQUIPMENT. CONDUCTORS FEEDING EQUIPMENT TO BE REMOVED IN ITS ENTIRETY, SHALL BE REMOVED AS FAR BACK TO THE SOURCE AS POSSIBLE AND DISCONNECTED FROM THE BRANCH PANEL SERVICE THAT CIRCUIT.
- DISCONNECT AND REMOVE CEILING LIGHT FIXTURES TO PREVENT DAMAGE DURING RENOVATION. CLEAN FIXTURES AS NEEDED PRIOR TO REINSTALLING ONCE RENOVATION WORK IS COMPLETE. CONSULT ARCHITECT PRIOR TO THE START OF ANY WORK TO IDENTIFY LIGHT FIXTURES TO BE REUSED, SALVAGED OR REPLACED. COORDINATE WORK WITH ARCHITECT AND OTHER TRADES.

GENERAL NOTES:

- ALL WORK SHALL BE DONE IN ACCORDANCE WITH LOCAL, STATE AND NATIONAL ELECTRICAL CODE REQUIREMENTS.
- UNLESS OTHERWISE NOTED, ALL DRAWINGS ARE DIAGRAMMATICAL. THE ELECTRICAL CONTRACTOR SHALL BE RESPONSIBLE FOR VERIFYING ALL EXISTING CONDITIONS AS THEY RELATE TO THE PROJECT, PRIOR TO THE START OF ANY WORK AND REPORT ANY DISCREPANCIES TO THE ARCHITECT IMMEDIATELY.
- ELECTRICAL DEVICES, LIGHTING DESIGN, FIXTURE TYPES AND LIGHTING CONTROLS SHALL BE IN ACCORDANCE WITH THE SCHOOL DISTRICT'S PRODUCT STANDARDS. PROVIDE LED LAMPING.
- PROVIDE CEILING MOUNTED OCCUPANCY SENSORS IN EACH CLASSROOM, TIED INTO THE SECURITY SYSTEM PER SCHOOL DISTRICT REQUIREMENTS. CONSULT THE SCHOOL DISTRICT FOR EXACT MAKE AND MODEL TO BE USED AND COORDINATE INSTALLATION WITH FACILITIES PERSONNEL.

ELECTRICAL SHEET NOTES:

- PROVIDE NEW 120V, 1P, 20A DUPLEX RECEPTACLES AS NEEDED. ALL RECEPTACLES SHALL BE TIED INTO THE EXISTING RECEPTACLE CIRCUITS ASSOCIATED WITH THAT PARTICULAR ROOM THAT WERE LEFT FROM DEMOLITION. IN AREAS WHERE NEW DEVICE CIRCUITS ARE NEEDED, PROVIDE FROM NEAREST BRANCH PANEL WITH AVAILABLE CAPACITY.
- PROVIDE ROUGH IN ONLY FOR VOICE/DATA OUTLETS. COORDINATE EXACT LOCATION WITH ARCHITECT AND CONSULT THE OWNER'S IT PERSONNEL FOR ADDITIONAL REQUIREMENTS PRIOR TO THE START OF ANY WORK.
- COORDINATE WITH MECHANICAL EQUIPMENT INSTALLER FOR THE EXACT POWER REQUIREMENTS FOR ANY HVAC EQUIPMENT TO BE INSTALLED AND IDENTIFY BRANCH PANEL SOURCE WITH AVAILABLE CAPACITY TO SUPPORT THE ELECTRICAL LOAD, PRIOR TO THE START OF ANY WORK.
- TIE LIGHTING INTO EXISTING LIGHTING CIRCUITS LEFT FROM DEMOLITION. PROVIDE AREA LIGHTING CONTROLS AS INDICATED IN EACH SPACE. REFER TO SHEET E1.00 FOR LIGHTING SCHEDULE.
- PROVIDE APPROPRIATE EGRESS LIGHTING AND EXIT SIGNAGE ALONG PATH OF EGRESS AS REQUIRED BY CODE. EGRESS LIGHTING SHALL BE TIED INTO THE EXISTING EMERGENCY BACKUP POWER SYSTEM AND/OR CIRCUITING.
- PROVIDE ONE 20A, 120V, 1P ELECTRICAL CONNECTION FOR EXHAUST FAN, FROM NEAREST BRANCH PANEL WITH SPARE BREAKER SPACE. PROVIDE FAN CONTROL SWITCH, LOCATED PER ARCHITECT'S DIRECTION.
- TIE LIGHTING INTO EXISTING CORRIDOR LIGHTING CIRCUIT(S). PROVIDE AREA REFER TO SHEET E1.00 FOR LIGHTING SCHEDULE.
- MOUNT RECEPTACLE IN THE FACE OF THE CABINET. COORDINATE WITH ARCHITECTURAL INTERIOR ELEVATIONS FOR EXACT LOCATION.

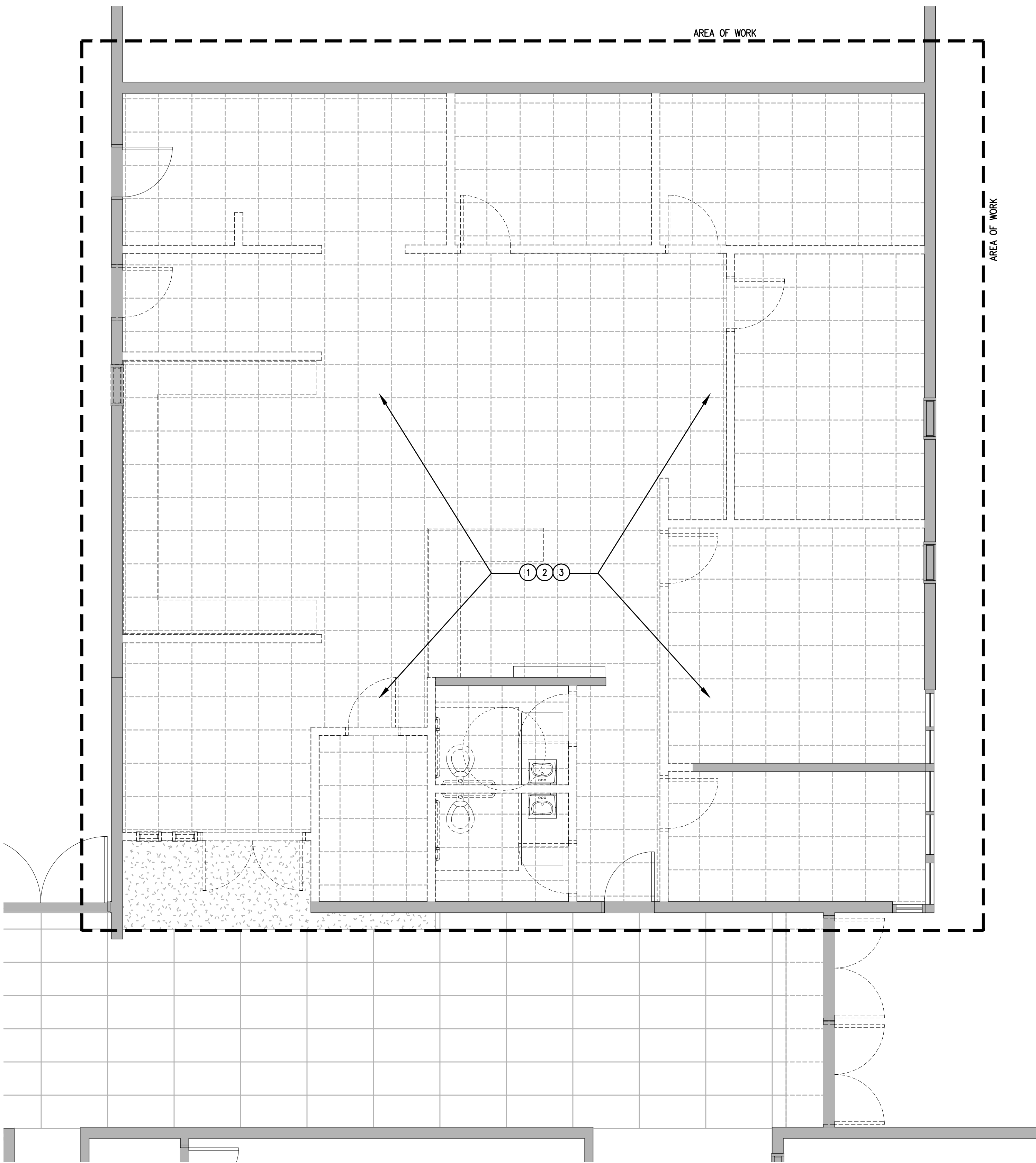
| No. | Description | Date |
|-----|-------------|------|
| | | |
| | | |
| | | |
| | | |
| | | |
| | | |

Project Number 1920
Date 02.21.2020

PERMIT SET

ENLARGED
SCIENCE RM.
ELECTRICAL PLAN

E2.01

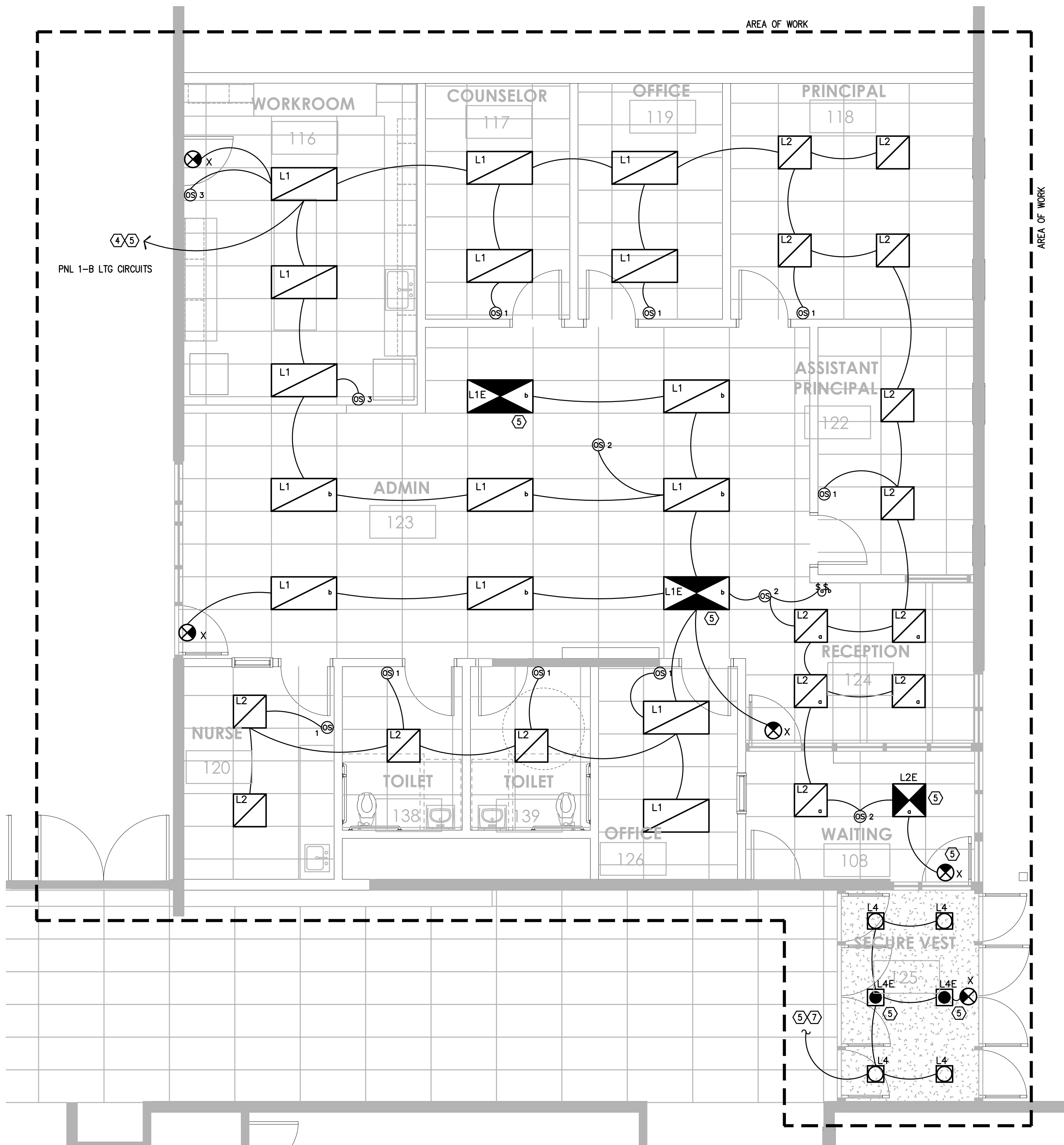


GENERAL DEMOLITION NOTES:

- A. UNLESS OTHERWISE NOTED, ALL PLANS ARE DIAGRAMMATICAL. CONTRACTOR SHALL FIELD VERIFY ALL EXISTING CONDITIONS AS THEY RELATE TO THE PROJECT PRIOR TO THE START OF ANY WORK.
- B. UNLESS OTHERWISE NOTED, REMOVE ALL ELECTRICAL DEVICES AND ASSOCIATED ITEMS IN CONFLICT WITH NEW CONSTRUCTION. MODIFY CIRCUITING AS REQUIRED TO MAINTAIN FEED TO DOWNSTREAM DEVICES OR FIXTURES TO REMAIN.
- C. COORDINATE WITH THE MECHANICAL CONTRACTOR FOR DISCONNECTION/RECONNECTION OF ANY AND ALL MECHANICAL EQUIPMENT TO BE REMOVED OR REPLACED.

DEMOLITION SHEET NOTES:

1. DISCONNECT AND REMOVE ALL ELECTRICAL DEVICES TO AREAS SCHEDULED FOR REMOVAL. REMOVE WIRING AS FAR BACK AS NECESSARY (IE: NEAREST DEVICE TO REMAIN).
2. DISCONNECT POWER TO MECHANICAL EQUIPMENT TO BE REMOVED AND/OR REPLACED. MAINTAIN EXISTING CIRCUIT CONDUCTORS FOR RECONNECTION OF REPLACED EQUIPMENT. CONDUCTORS FEEDING EQUIPMENT TO BE REMOVED IN ITS ENTIRETY, SHALL BE REMOVED AS FAR BACK TO THE SOURCE AS POSSIBLE AND DISCONNECTED FROM THE BRANCH PANEL SERVICE THAT CIRCUIT.
3. DISCONNECT AND REMOVE CEILING LIGHT FIXTURES TO PREVENT DAMAGE DURING RENOVATION. CLEAN FIXTURES AS NEEDED PRIOR TO REINSTALLING ONCE RENOVATION WORK IS COMPLETE. CONSULT ARCHITECT PRIOR TO THE START OF ANY WORK TO IDENTIFY LIGHT FIXTURES TO BE REUSED, SALVAGED OR REPLACED. COORDINATE WORK WITH ARCHITECT AND OTHER TRADES.



GENERAL NOTES:

- A. ALL WORK SHALL BE DONE IN ACCORDANCE WITH LOCAL, STATE AND NATIONAL ELECTRICAL CODE REQUIREMENTS.
- B. UNLESS OTHERWISE NOTED, ALL DRAWINGS ARE DIAGRAMMATICAL. THE ELECTRICAL CONTRACTOR SHALL BE RESPONSIBLE FOR VERIFYING ALL EXISTING CONDITIONS AS THEY RELATE TO THE PROJECT, PRIOR TO THE START OF ANY WORK AND REPORT ANY DISCREPANCIES TO THE ARCHITECT IMMEDIATELY.
- C. ELECTRICAL DEVICES, LIGHTING DESIGN, FIXTURE TYPES AND LIGHTING CONTROLS SHALL BE IN ACCORDANCE WITH THE SCHOOL DISTRICT'S PRODUCT STANDARDS. PROVIDE LED LAMPING.
- D. PROVIDE CEILING MOUNTED OCCUPANCY SENSORS IN EACH CLASSROOM, TIED INTO THE SECURITY SYSTEM PER SCHOOL DISTRICT REQUIREMENTS. CONSULT THE SCHOOL DISTRICT FOR EXACT MAKE AND MODEL TO BE USED AND COORDINATE INSTALLATION WITH FACILITIES PERSONNEL.

ELECTRICAL SHEET NOTES:

1. PROVIDE NEW 120V, 1P, 20A DUPLEX RECEPTACLES AS NEEDED. ALL RECEPTACLES SHALL BE TIED INTO THE EXISTING RECEPTACLE CIRCUITS ASSOCIATED WITH THAT PARTICULAR ROOM THAT WERE LEFT FROM DEMOLITION. IN AREAS WHERE NEW DEVICE CIRCUITS ARE NEEDED, PROVIDE FROM NEAREST BRANCH PANEL WITH AVAILABLE CAPACITY.
2. PROVIDE ROUGH IN ONLY FOR VOICE/DATA OUTLETS. COORDINATE EXACT LOCATION WITH ARCHITECT AND CONSULT THE OWNER'S IT PERSONNEL FOR ADDITIONAL REQUIREMENTS PRIOR TO THE START OF ANY WORK.
3. COORDINATE WITH MECHANICAL EQUIPMENT INSTALLER FOR THE EXACT POWER REQUIREMENTS FOR ANY HVAC EQUIPMENT TO BE INSTALLED AND IDENTIFY BRANCH PANEL SOURCE WITH AVAILABLE CAPACITY TO SUPPORT THE ELECTRICAL LOAD, PRIOR TO THE START OF ANY WORK.
4. TIE LIGHTING INTO EXISTING LIGHTING CIRCUITS LEFT FROM DEMOLITION. PROVIDE AREA LIGHTING CONTROLS AS INDICATED IN EACH SPACE. REFER TO SHEET E1.00 FOR LIGHTING SCHEDULE.
5. PROVIDE APPROPRIATE EGRESS LIGHTING AND EXIT SIGNAGE ALONG PATH OF EGRESS AS REQUIRED BY CODE. EGRESS LIGHTING SHALL BE TIED INTO THE EXISTING EMERGENCY BACKUP POWER SYSTEM AND/OR CIRCUITING.
6. PROVIDE ONE 20A, 120V, 1P ELECTRICAL CONNECTION FOR EXHAUST FAN, FROM NEAREST BRANCH PANEL WITH SPARE BREAKER SPACE. PROVIDE FAN CONTROL SWITCH, LOCATED PER ARCHITECT'S DIRECTION.
7. TIE LIGHTING INTO EXISTING CORRIDOR LIGHTING CIRCUIT(S). PROVIDE AREA REFER TO SHEET E1.00 FOR LIGHTING SCHEDULE.
8. MOUNT RECEPTACLE IN THE FACE OF THE CABINET. COORDINATE WITH ARCHITECTURAL INTERIOR ELEVATIONS FOR EXACT LOCATION.

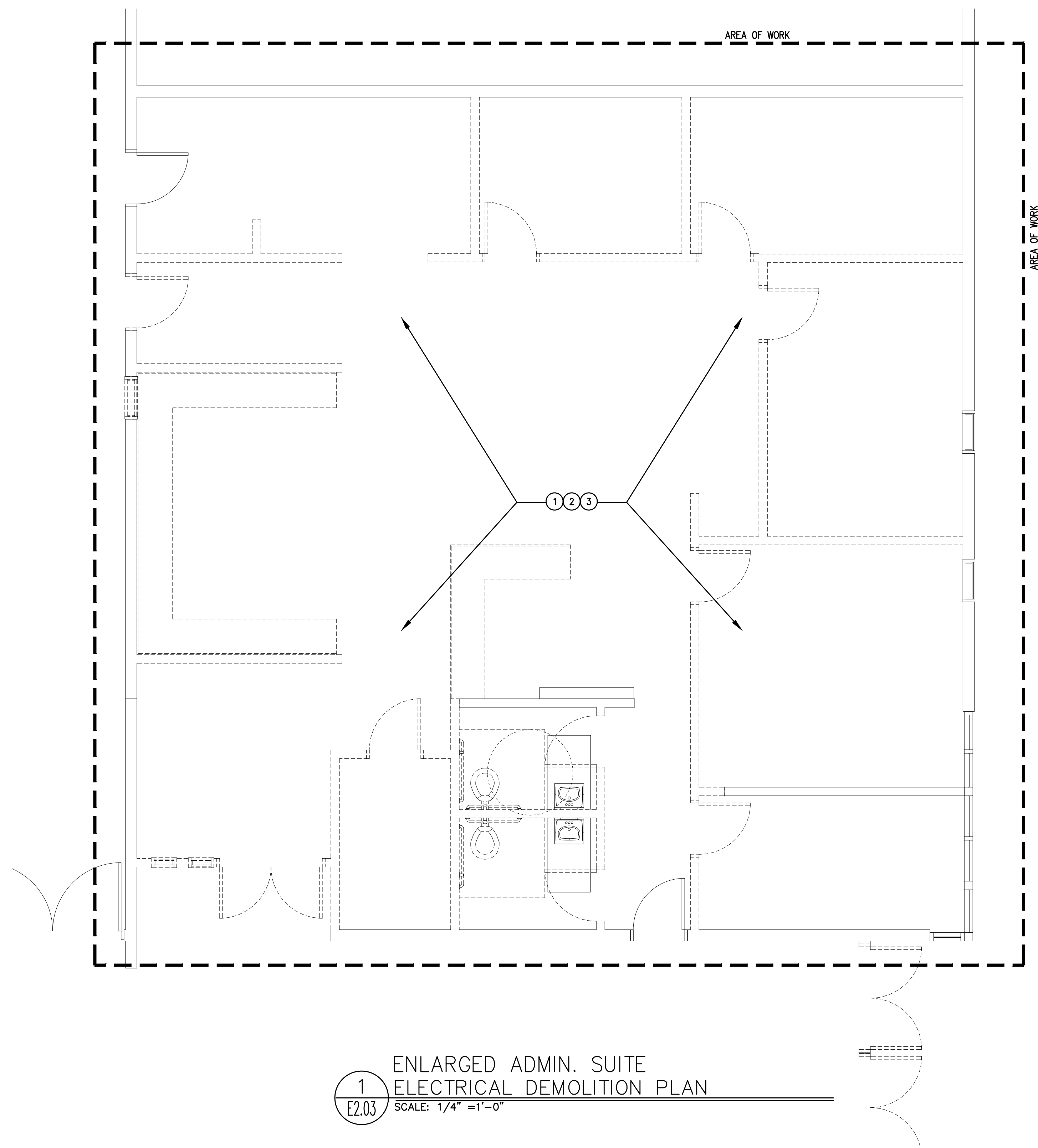
| No. | Description | Date |
|-----|-------------|------|
| | | |
| | | |
| | | |
| | | |
| | | |
| | | |

Project Number 1920
Date 02.21.2020

PERMIT SET

ENLARGED
ADMIN. SUITE
LIGHTING PLAN

E2.02



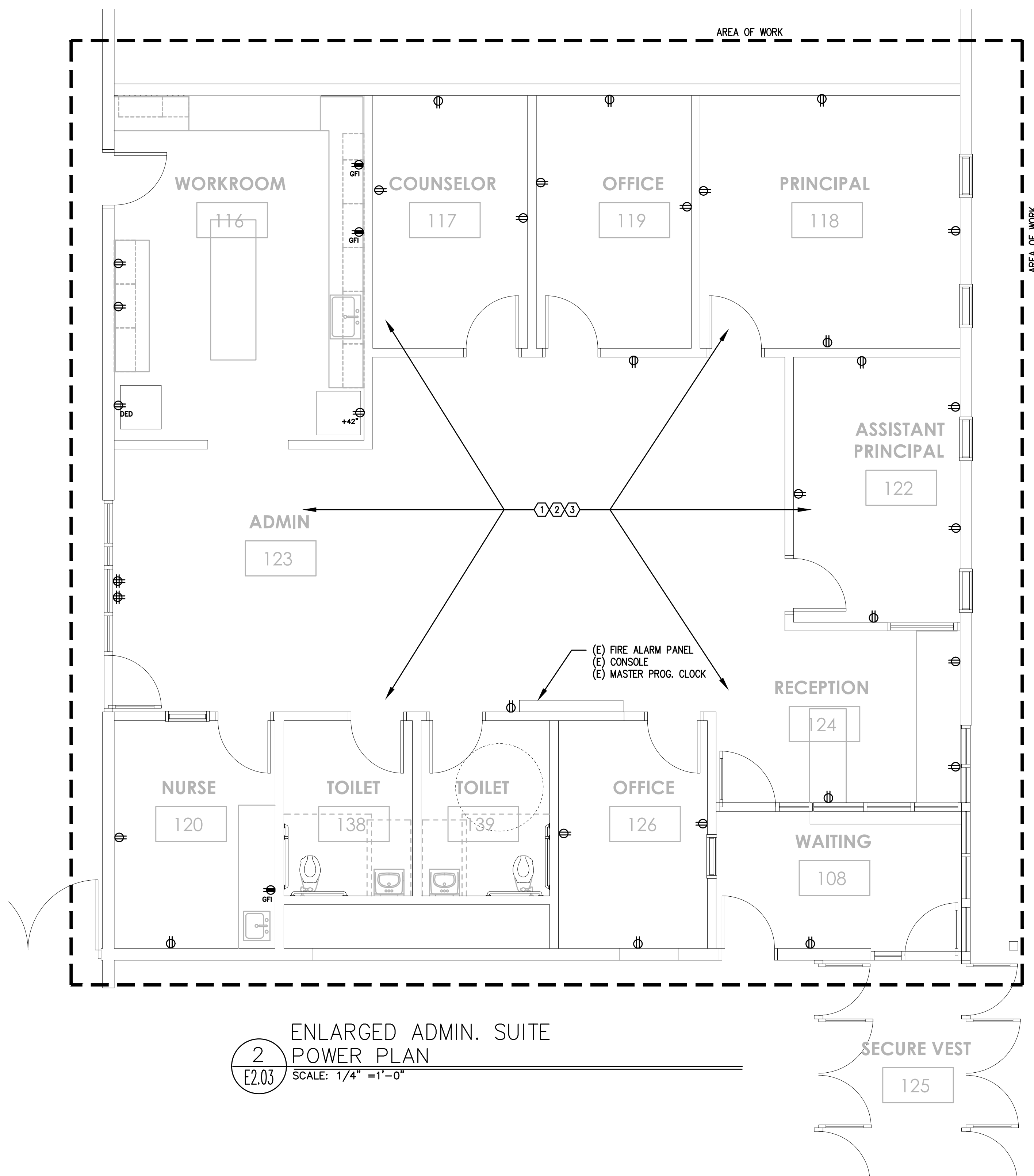
1
E2.03
ENLARGED ADMIN. SUITE
ELECTRICAL DEMOLITION PLAN
SCALE: 1/4" = 1'-0"

GENERAL DEMOLITION NOTES:

- UNLESS OTHERWISE NOTED, ALL PLANS ARE DIAGRAMMATICAL. CONTRACTOR SHALL FIELD VERIFY ALL EXISTING CONDITIONS AS THEY RELATE TO THE PROJECT PRIOR TO THE START OF ANY WORK.
- UNLESS OTHERWISE NOTED, REMOVE ALL ELECTRICAL DEVICES AND ASSOCIATED ITEMS IN CONFLICT WITH NEW CONSTRUCTION. MODIFY CIRCUITING AS REQUIRED TO MAINTAIN FEED TO DOWNSTREAM DEVICES OR FIXTURES TO REMAIN.
- COORDINATE WITH THE MECHANICAL CONTRACTOR FOR DISCONNECTION/RECONNECTION OF ANY AND ALL MECHANICAL EQUIPMENT TO BE REMOVED OR REPLACED.

DEMOLITION SHEET NOTES:

- DISCONNECT AND REMOVE ALL ELECTRICAL DEVICES TO AREAS SCHEDULED FOR REMOVAL. REMOVE WIRING AS FAR BACK AS NECESSARY (IE: NEAREST DEVICE TO REMAIN).
- DISCONNECT POWER TO MECHANICAL EQUIPMENT TO BE REMOVED AND/OR REPLACED. MAINTAIN EXISTING CIRCUIT CONDUCTORS FOR RECONNECTION OF REPLACED EQUIPMENT. CONDUCTORS FEEDING EQUIPMENT TO BE REMOVED IN ITS ENTIRETY, SHALL BE REMOVED AS FAR BACK TO THE SOURCE AS POSSIBLE AND DISCONNECTED FROM THE BRANCH PANEL SERVICE THAT CIRCUIT.
- DISCONNECT AND REMOVE CEILING LIGHT FIXTURES TO PREVENT DAMAGE DURING RENOVATION. CLEAN FIXTURES AS NEEDED PRIOR TO REINSTALLING ONCE RENOVATION WORK IS COMPLETE. CONSULT ARCHITECT PRIOR TO THE START OF ANY WORK TO IDENTIFY LIGHT FIXTURES TO BE REUSED, SALVAGED OR REPLACED. COORDINATE WORK WITH ARCHITECT AND OTHER TRADES.



2
E2.03
ENLARGED ADMIN. SUITE
POWER PLAN
SCALE: 1/4" = 1'-0"

GENERAL NOTES:

- ALL WORK SHALL BE DONE IN ACCORDANCE WITH LOCAL, STATE AND NATIONAL ELECTRICAL CODE REQUIREMENTS.
- UNLESS OTHERWISE NOTED, ALL DRAWINGS ARE DIAGRAMMATICAL. THE ELECTRICAL CONTRACTOR SHALL BE RESPONSIBLE FOR VERIFYING ALL EXISTING CONDITIONS AS THEY RELATE TO THE PROJECT, PRIOR TO THE START OF ANY WORK AND REPORT ANY DISCREPANCIES TO THE ARCHITECT IMMEDIATELY.
- ELECTRICAL DEVICES, LIGHTING DESIGN, FIXTURE TYPES AND LIGHTING CONTROLS SHALL BE IN ACCORDANCE WITH THE SCHOOL DISTRICT'S PRODUCT STANDARDS. PROVIDE LED LAMPING.
- PROVIDE CEILING MOUNTED OCCUPANCY SENSORS IN EACH CLASSROOM, TIED INTO THE SECURITY SYSTEM PER SCHOOL DISTRICT REQUIREMENTS. CONSULT THE SCHOOL DISTRICT FOR EXACT MAKE AND MODEL TO BE USED AND COORDINATE INSTALLATION WITH FACILITIES PERSONNEL.

ELECTRICAL SHEET NOTES:

- PROVIDE NEW 120V, 1P, 20A DUPLEX RECEPTACLES AS NEEDED. ALL RECEPTACLES SHALL BE TIED INTO THE EXISTING RECEPTACLE CIRCUITS ASSOCIATED WITH THAT PARTICULAR ROOM THAT WERE LEFT FROM DEMOLITION. IN AREAS WHERE NEW DEVICE CIRCUITS ARE NEEDED, PROVIDE FROM NEAREST BRANCH PANEL WITH AVAILABLE CAPACITY.
- PROVIDE ROUGH IN ONLY FOR VOICE/DATA OUTLETS. COORDINATE EXACT LOCATION WITH ARCHITECT AND CONSULT THE OWNER'S IT PERSONNEL FOR ADDITIONAL REQUIREMENTS PRIOR TO THE START OF ANY WORK.
- COORDINATE WITH MECHANICAL EQUIPMENT INSTALLER FOR THE EXACT POWER REQUIREMENTS FOR ANY HVAC EQUIPMENT TO BE INSTALLED AND IDENTIFY BRANCH PANEL SOURCE WITH AVAILABLE CAPACITY TO SUPPORT THE ELECTRICAL LOAD, PRIOR TO THE START OF ANY WORK.
- TIE LIGHTING INTO EXISTING LIGHTING CIRCUITS LEFT FROM DEMOLITION. PROVIDE AREA LIGHTING CONTROLS AS INDICATED IN EACH SPACE. REFER TO SHEET E1.00 FOR LIGHTING SCHEDULE.
- PROVIDE APPROPRIATE EGRESS LIGHTING AND EXIT SIGNAGE ALONG PATH OF EGRESS AS REQUIRED BY CODE. EGRESS LIGHTING SHALL BE TIED INTO THE EXISTING EMERGENCY BACKUP POWER SYSTEM AND/OR CIRCUITING.
- PROVIDE ONE 20A, 120V, 1P ELECTRICAL CONNECTION FOR EXHAUST FAN, FROM NEAREST BRANCH PANEL WITH SPARE BREAKER SPACE. PROVIDE FAN CONTROL SWITCH, LOCATED PER ARCHITECT'S DIRECTION.
- TIE LIGHTING INTO EXISTING CORRIDOR LIGHTING CIRCUIT(S). PROVIDE AREA REFER TO SHEET E1.00 FOR LIGHTING SCHEDULE.
- MOUNT RECEPTACLE IN THE FACE OF THE CABINET. COORDINATE WITH ARCHITECTURAL INTERIOR ELEVATIONS FOR EXACT LOCATION.

| No. | Description | Date |
|-----|-------------|------|
| | | |
| | | |
| | | |
| | | |
| | | |
| | | |

Project Number 1920
Date 02.21.2020

PERMIT SET

ENLARGED
ADMIN. SUITE
POWER PLAN

E2.03