

FEATURES & SPECIFICATIONS

INTENDED USE — The 2GTL LED recessed troffer offers a wide range of lumen packages, color temperatures, and lens options to meet the lighting needs for a wide range of applications such as schools, offices, and hospitals. The light engine delivers long life and excellent color to ensure a sound quality, low-maintenance lighting installation. **Certain airborne contaminants can diminish the integrity of acrylic and/or polycarbonate.** [Click here for Acrylic-Polycarbonate Compatibility table for suitable uses.](#)

CONSTRUCTION — Housing formed from 22 gauge cold-rolled steel. Smooth hemmed sides and smooth inward formed end flanges for safe handling. Includes integral T-bar clips. Lighter-weight fixture allows for safe, easy installation.

OPTICS — Highly transmissive pattern #12 lens diffuses the light source without compromising output. Pattern # 19 and satin white lens options also available.

ELECTRICAL — Long-life LEDs, coupled with high-efficiency drivers, provide extended service life. 80% LED lumen maintenance at 72,000 hours (L80/72,000).

elDoLED driver options deliver choice of dimming range, and choices for control, while assuring flicker-free, low-current inrush, 89% efficiency and low EMI.

Optional nLight® embedded controls make each luminaire addressable - allowing it to digitally communicate with other nLight enabled controls such as dimmers, switches, occupancy sensors and photocontrols. Simply connect all the nLight enabled control devices and the GTL luminaires using standard Cat-5 cabling. Unique plug-and-play convenience as devices and luminaires automatically discover each other and self-commission. Lumen Management: Unique lumen management system (option N80) provides onboard intelligence that actively manages the LED light source so that constant lumen output is maintained over the system life, preventing the energy waste created by the traditional practice of over-lighting.

The step-level dimming option (SLD) allows the system to be switched to 50% power for compliance with common energy codes while maintaining fixture appearance.

Ballast disconnect is provided where required to comply with U.S. and Canadian codes.

INSTALLATION — LED boards include plug-in connectors for easy of upgradeability. Suitable for direct insulation contact. Suitable for damp location.

LISTINGS — CSA certified to meet U.S. and Canadian standards. IC rated. DesignLights Consortium® (DLC) Premium qualified product. Not all versions of this product may be DLC Premium qualified. Please check the DLC Qualified Products List at www.designlights.org/QPL to confirm which versions are qualified.

WARRANTY — 5-year limited warranty. Complete warranty terms located at www.acuitybrands.com/CustomerResources/Terms_and_conditions.aspx

Note: Actual performance may differ as a result of end-user environment and application.

All values are design or typical values, measured under laboratory conditions at 25 °C.

Specifications subject to change without notice.

| |
|----------------|
| Catalog Number |
| Notes |
| Type |



GTL Series

2GTL

2' x 4'

LED Recessed Troffer

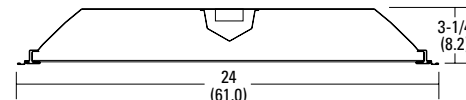


Specifications

Length: 48 (122.0)

Width: 24 (61.0)

Depth: 3-1/4 (8.2)



All dimensions are inches (centimeters) unless otherwise indicated.

A+ Capable Luminaire

This item is an A+ capable luminaire, which has been designed and tested to provide consistent color appearance and out-of-the-box control compatibility with simple commissioning.

- All configurations of this luminaire meet the Acuity Brands' specification for chromatic consistency
- This luminaire is part of an A+ Certified solution for nLight® control networks when ordered with drivers marked by a **shaded background***
- This luminaire is part of an A+ Certified solution for nLight control networks, providing advanced control functionality at the luminaire level, when selection includes driver and control options marked by a **shaded background***

To learn more about A+, visit www.acuitybrands.com/aplus.

*See ordering tree for details

2GTL LED Troffer



A+ Capable options indicated by this color background.

ORDERING INFORMATION

Lead times will vary depending on options selected. Consult with your sales representative.

Example: 2GTL 4 48L GZ10 LP835

| 2GTL | | | | | | |
|-------------------------------------|--------------------------------------|--------|---|--|---|---|
| Series | Trim type | Length | Lumens ¹ | Door | Lens | Voltage |
| 2GTL 2' wide recessed LED luminaire | (blank) Grid F Overlapping flange | 4 4' | 30L 3000 lumens 40L 4000 lumens 48L 4800 lumens 60L 6000 lumens 72L 7200 lumens 88L 8800 lumens 100L 10000 lumens 140L 14000 lumens ² | (blank) Flush steel, white FN Flush aluminum, natural FM Flush aluminum, matte black FW Flush aluminum, white RN Regressed aluminum, natural RM Regressed aluminum, matte black RW Regressed aluminum, white | (blank) #12 pattern acrylic, 0.110" thick A12125 #12 pattern acrylic, frosted, .125" thick A19 #19 pattern acrylic, 0.156" thick SWL Satin white | (blank) MVOLT (120-277V) 120 120V 277 277V 347 347V ³ |

| Driver | Color temperature | Controls ⁶ | Options |
|---------------------------------------|-------------------|---|---|
| EZ1 eldoLED dims to 1 % | LP830 3000 K | (blank) No controls | EL7L 700 lumen emergency battery (Noncompliant with CA T20) ^{5,7,8} |
| GZ10 Dims to 10% (0-10V dimming) | LP835 3500 K | N80 nLight with 80% (L80) lumen management | EL14L 1400 lumen emergency battery (Noncompliant with CA T20) ^{5,7,8} |
| GZ1 Dims to 1% (0-10V dimming) | LP840 4000 K | N80EMG nLight with 80% (L80) lumen management for use with generator supply emergency power | E10WLCP EM Self-Diagnostic battery pack, 10W Constant Power, Certified in CA Title 20 MAEDBS ^{5,7,8} |
| SLD Step-level dimming ^{4,5} | LP850 5000 K | N100 nLight without lumen management | BGTD Bodine Generator Transfer Device ^{9,10,11} |
| | | N100EMG nLight without lumen management for use with generator supply emergency power | CP Chicago plenum |
| | | | PWS1836 6' pre-wire, 3/8" diameter, 18-gauge, 1-circuit |
| | | | PWS1846 6' pre-wire, 3/8" diameter, 18-gauge, 2-circuit |
| | | | ABC Door frame gasketing ¹² |
| | | | GLR Fast-blowing fuse ¹³ |
| | | | GMF Slow-blowing fuse ¹³ |
| | | | LATC Earthquake clip |
| | | | NPLT Narrow pallet |
| | | | PAF Paint after fab |

Accessories: Order as separate catalog number.

DGA24 Drywall grid adapter for 2x4 recessed fixture.
2X4SMKSH PAF Surface Mount Troffer Kit Post Paint

Notes

- 1 Approximate lumen output. Lumen output will vary depending upon lens option chosen.
- 2 Not available with GZ10.
- 3 Not available with SLD, EL7L, EL14L, E10WLCP or BGTD.
- 4 Not available with 100L and 140L.
- 5 When using pre-wire option, use PWS1846.
- 6 Not available with SLD, GZ1, GZ10.
- 7 Not available with SLD or GZ1 or GZ10 when combined with any of the following lumen packages: 72L, 88L, 100L or 140L.
- 8 Not available with EZ1 when combined with 100L or 140L lumen packages.

9 Not Available with SLD.

10 Not Available with Controls options when ordered in combination with 100L or 140L lumen packages.

11 Must specify voltage. Requires BSE labeling, voltage specific. Consult factory for options. Example: BGTD BSE10.

12 Only available with aluminum door.

13 Must specify voltage, 120 or 277.

14 For CEC (T20) compliant option, substitute EL14L option with E10WLCP "EM self- diagnostic battery pack 10W constant power, CEC compliant".

Stock/Non-configurable models are offered for shorter lead times:

ORDERING INFORMATION

| Catalog Number | UPC | Description | Lumens | Color Temperature | Voltage | Wattage | Pallet qty. | Standard carton qty. |
|--|--------------|---|--------|-------------------|---------|---------|-------------|----------------------|
| 2GTL4 4400LM LP835 | 889804706598 | 2x4 LED lay-in troffer | 4391 | 3500K | 120-277 | 34.10 | 28 | 1 |
| 2GTL4 4400LM LP840 | 889804706956 | 2x4 LED lay-in troffer | 4567 | 4000K | 120-277 | 34.10 | 28 | 1 |
| 2GTL4 4400LM 347 LP835 | 889804710243 | 2x4 LED lay-in troffer, 347v | 4391 | 3500K | 347 | 38.11 | 28 | 1 |
| 2GTL4 4400LM 347 LP840 | 889804710359 | 2x4 LED lay-in troffer, 347v | 4567 | 4000K | 347 | 38.11 | 28 | 1 |
| 2GTL4 4400LM EL14L LP835 ¹⁴ | 889804710045 | 2x4 LED lay-in troffer, emergency battery | 4391 | 3500K | 120-277 | 34.10 | 28 | 1 |
| 2GTL4 4400LM EL14L LP840 ¹⁴ | 889804710205 | 2x4 LED lay-in troffer, emergency battery | 4567 | 4000K | 120-277 | 34.10 | 28 | 1 |
| 2GTL4 5000LM LP835 | 889804710366 | 2x4 LED lay-in troffer | 4867 | 3500K | 120-277 | 38.79 | 28 | 1 |
| 2GTL4 5000LM LP840 | 889804710458 | 2x4 LED lay-in troffer | 5062 | 4000K | 120-277 | 38.79 | 28 | 1 |
| 2GTL4 5000LM 347 LP835 | 889804710489 | 2x4 LED lay-in troffer, 347v | 4867 | 3500K | 347 | 42.78 | 28 | 1 |
| 2GTL4 5000LM 347 LP840 | 889804710595 | 2x4 LED lay-in troffer, 347v | 5062 | 4000K | 347 | 42.78 | 28 | 1 |
| 2GTL4 5000LM EL14L LP835 ¹⁴ | 889804710625 | 2x4 LED lay-in troffer, emergency battery | 4867 | 3500K | 120-277 | 38.79 | 28 | 1 |
| 2GTL4 5000LM EL14L LP840 ¹⁴ | 889804710700 | 2x4 LED lay-in troffer, emergency battery | 5062 | 4000K | 120-277 | 38.79 | 28 | 1 |

| Performance Data | | | |
|------------------|----------|-------------|-----|
| Lumen Package | Lumens | Input Watts | LPW |
| 30L LP830 | 2923.34 | 23.3 | 125 |
| 30L LP835 | 2983 | 23.3 | 128 |
| 30L LP840 | 3102.32 | 23.3 | 133 |
| 30L LP850 | 3161.98 | 23.3 | 136 |
| 40L LP830 | 3843.56 | 29.83 | 129 |
| 40L LP835 | 3922 | 29.83 | 131 |
| 40L LP840 | 4078.88 | 29.83 | 137 |
| 40L LP850 | 4157.32 | 29.83 | 139 |
| 48L LP830 | 4681.46 | 35.79 | 131 |
| 48L LP835 | 4777 | 35.79 | 133 |
| 48L LP840 | 4968.08 | 35.79 | 139 |
| 48L LP850 | 5063.62 | 35.79 | 141 |
| 60L LP830 | 6093.64 | 48.82 | 125 |
| 60L LP835 | 6218 | 48.82 | 127 |
| 60L LP840 | 6466.72 | 48.82 | 132 |
| 60L LP850 | 6591.08 | 48.82 | 135 |
| 72L LP830 | 7203.98 | 53.32 | 135 |
| 72L LP835 | 7351 | 53.32 | 138 |
| 72L LP840 | 7645.04 | 53.32 | 143 |
| 72L LP850 | 7792.06 | 53.32 | 146 |
| 88L LP830 | 8563.24 | 65 | 132 |
| 88L LP835 | 8738 | 65 | 134 |
| 88L LP840 | 9087.52 | 65 | 140 |
| 88L LP850 | 9262.28 | 65 | 143 |
| 100L LP830 | 10449.74 | 82.75 | 126 |
| 100L LP835 | 10663 | 82.75 | 129 |
| 100L LP840 | 11089.52 | 82.75 | 134 |
| 100L LP850 | 11302.78 | 82.75 | 137 |
| 140L LP830 | 13306.44 | 110.25 | 121 |
| 140L LP835 | 13578 | 110.25 | 123 |
| 140L LP840 | 14121.12 | 110.25 | 128 |
| 140L LP850 | 14392.68 | 110.25 | 131 |

Note: Performance based on standard #12 pattern acrylic lens.

How to Estimate Delivered Lumens in Emergency Mode

Use the formula below to estimate the delivered lumens in emergency mode

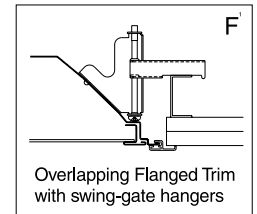
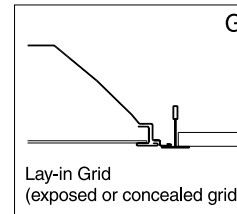
$$\text{Delivered Lumens} = 1.25 \times P \times \text{LPW}$$

P = Output power of emergency driver. P = 10W for E10WLCP option.

LPW = Lumen per watt rating of the luminaire. This information is available on the ABL luminaire spec sheet. LPW = Lumen per watt rating of the luminaire. LPW information available in Performance Data section.

MOUNTING DATA

Continuous row mounting of flanged units requires CRE and CRM trim options (see Options).



NOTE:

- 1 Recommended rough-in dimensions for F-trim fixtures 24"x48" (Tolerance is +1/4"-0"). Swing-gate range 1-3/16" to 3-15/16". Swing-gate span 23-3/8" to 26-11/16". Fixture swing-gate points require additional 1-1/16" over nominal fixture height.

FEATURES & SPECIFICATIONS

INTENDED USE — Ideal for applications requiring attractive die-cast aluminum signage, superior illumination and low energy consumption.

CONSTRUCTION — Precision-molded, die-cast aluminum construction — ultra-slim, compact housing. Fine-grain brushed aluminum faceplate with matte black electrostatic polymeric trim. Clear lacquer finish on brushed face inhibits fingerprints and other surface contaminants.

All electronics located inside housing.

Fully overlapping light seal prevents light leaks. Universal directional chevron knockouts are completely concealed and easily removed. Hinged faceplate and spring latches for easy lamp compartment access, no exposed hardware.

Letters 6" high with 3/4" stroke, with 100 ft viewing distance rating, based upon UL924 standards.

U.S. Patent No. 5,739,639, 5,954,423 and 6,502,044. Canada Patent No. 2,204,218. Other patents pending.

OPTICS — Lamp is constructed using new LED technology. Provides perfectly uniform illumination to meet 3/4" letter stroke required by code.

The typical life of the exit LED lamp is 10 years, based on continuous operation. Unique LED lamp platform accommodates both single-face and double-face exits.

Low energy consumption — red exit consumes std. 81W, 1.3W (120V), green exit consumes std 1W, 1.5W (120V). Universal input voltage capabilities (120V through 277V, 50 or 60 HZ).

ELECTRICAL — Solid-state electronic elements to eliminate risk of electromechanical failures.

Surge protection meets ANSI/IEEE C62.41 category B and IEC 1000 immunity standards for high voltage surges, electrostatic discharges, high frequency electrical fast transients and line voltage dips/swells.

Emergency Operation (for EL N option only): Battery: Sealed, maintenance-free nickel-cadmium battery delivers 90 minutes capacity to lamp.

Self-diagnostics (SD option only): Two-state constant-current charger maximizes battery life and automatically recharges after battery discharge. Test switch provided for manual testing.

Self-diagnostic testing for five minutes every 30 days, 30 minutes at 180-day interval, and 90 minutes annually.

Diagnostic evaluation of LED light source, AC to DC transfer, charging and battery condition.

Continuously monitors AC functionality.

Low voltage disconnect prevents excessive deep discharge that can permanently damage the battery.

Single-point microcomputer control for all electronic features.

Crystal oscillator timing system with watchdog protection for precision accuracy.

AC/LVD reset allows battery connection before AC power is applied and prevents battery damage from deep discharge.

Brownout protection is automatically switched to emergency mode when supply voltage drops below 80% of nominal.

Single multi-chromatic LED indicator to display two-state charging, test activation and three-state diagnostic status.

Test switch provides manual activation of 30-second diagnostic testing for on-demand visual inspection.

| |
|----------------|
| Catalog Number |
| Notes |
| Type |



LE surface



LRE recessed



Die-Cast Aluminum Exits

LE and LRE



INSTALLATION — Universal mounting (top, end or back). Double face available with top or end mounting only. LRE: Trim ring has 3/4" depth adjustment to ensure a flush fit against the surface. Protrudes 1/10" from the surface. No exposed hardware.

Die-cast aluminum canopy provided for surface mount only.

LISTINGS — UL damp location listed 50°F - 104°F (10°C - 40°C). Meets UL 924, NFPA 101 (current Life Safety Code), NEC and OSHA illumination standards. North Carolina Department of Insurance. NEMA Premium certified.

WARRANTY — 5-year limited warranty. (Battery is prorated.) Complete warranty terms located at www.acuitybrands.com/CustomerResources/Terms_and_conditions

Actual performance may differ as a result of end-user environment and application.

All values are design or typical values, measured under laboratory conditions at 25 °C.

Note: Specifications subject to change without notice.

ORDERING INFORMATION

For shortest lead times, configure products using **bolded options**.

Example: LE S 1 R EL N SD

| Series | Face type | Housing color | Number of faces | Letter color | Input voltage | Operation | Options |
|------------------------------|-----------------------------|---|-----------------------------------|----------------|--|---|--|
| LE LED, surface mount | S Stencil | (blank) Matte black, brushed aluminum face | 1 Single face | R Red | (blank) Universal input voltage (120-277V, 50 or 60 HZ) | (blank) AC only | (blank) None |
| LRE LED, recessed | P Panel ¹ | BZ Dark bronze | 2 Double face ² | G Green | | EL N Nickel-cadmium battery back-up | TP Two tamper proof Torx-head screws |
| | | W White | | | | X2 Lamp wired on two separate AC circuits ³ | VR Vandal-resistant shield (1/8" thick polycarbonate) ⁴ |
| | | B Matte black | | | | | FI FA Field selectable fire alarm interface or flashing emergency operation with intermittent audible alarm (one flash per minute) ⁵ |
| | | | | | | | FI Fire alarm flashing interface ⁶ |
| | | | | | | | FA Flashing emergency operation and intermittent audible alarm ⁷ |
| | | | | | | | SD Self-diagnostics ⁷ |

Accessories: Order as separate catalog number.

| | | | |
|-----------|---|--------------------|--|
| ELA US12 | 12" stem kit (see spec sheet ELA-StemKits) ^{2,8} | ELA LEHO 120/277 N | Remote-capable exit with black canopy; provides 90 minutes of 11.1W capacity for remote head (see spec sheet ELA-LEHO) ^{2,8} |
| ELA WG1 | Back-mount wire guard (see spec sheet ELA-WG) ² | | |
| ELA WGEXT | Top-mount wire guard (see spec sheet ELA-WG) ² | ELA ERK | Recess mounting rough-in kit for LRE only (see spec sheet ELA-ERK) |
| ELA WGEXE | End-mount wire guard (see spec sheet ELA-WG) ² | | |

Notes

- Panel face available for special wording only (see Custom Signage spec sheet).
- Not available with LRE models.
- UL Listed as emergency lighting.
- VR contains tamper proof screws.
- Available with SD option only.
- Available with AC only or EL N operation only.
- Available with EL N option only.
- Add W for white.

SPECIFICATIONS

| ELECTRICAL | | | | |
|---------------------|-------------------|----------------|-------------|-----------|
| Primary circuit | | | | |
| Type | Typical LED life¹ | Supply voltage | Input watts | Max. amps |
| Red LED AC only | 10 Years | 120 | 0.81 | 0.05 |
| | | 277 | 1.2 | 0.06 |
| Green LED AC only | 10 Years | 120 | 1.05 | 0.05 |
| | | 277 | 1.32 | 0.06 |
| Red LED emergency | 10 Years | 120 | 1.3 | 0.06 |
| | | 277 | 1.4 | 0.07 |
| Green LED emergency | 10 Years | 120 | 1.5 | 0.07 |
| | | 277 | 1.7 | 0.07 |

| BATTERY | | | |
|-----------------------|---------------|--------------|-------------------------------|
| Sealed Nickel-Cadmium | | | |
| Shelf life² | Typical life² | Maintenance³ | Optimum temperature⁴ |
| 3 years | 7-9 years | none | 50°F – 104°F (10°C – 40°C) |

Notes

- 1 The typical life of the exit LED lamp is 10 years, based on continuous operation.
- 2 At 77°F (25°C).
- 3 All life safety equipment, including emergency lighting for path of egress must be maintained, serviced, and tested in accordance with all National Fire Protection Association (NFPA) and local codes. Failure to perform the required maintenance, service, or testing could jeopardize the safety of occupants and will void all warranties.
- 4 Optimum ambient temperature range where unit will provide capacity for 90 minutes. Higher and lower temperatures affect life and capacity.

SELF-DIAGNOSTICS
(SD option only)

- Five-minute test every 30 days
- 30-minute test every six months
- 90-minute test annually
- Diagnostics evaluate the battery, lamp, charger and AC to DC transfer.

| Condition | Indication |
|-----------------|------------------|
| Normal mode | Steady green |
| Self-testing | Flashing green |
| Emergency mode | Off |
| Hi-charge | Steady red |
| Battery failure | Single-flash red |
| Lamp failure | Double-flash red |
| Circuit failure | Triple-flash red |

KEY FEATURE

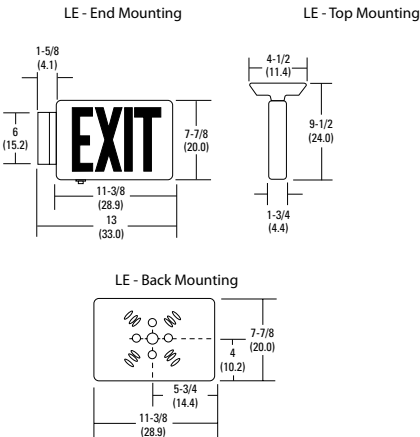


The typical life of the exit LED lamp is 10 years.

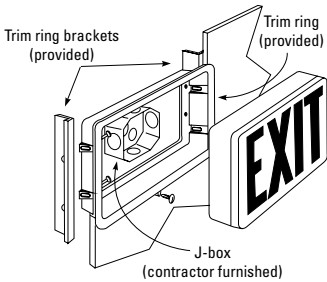
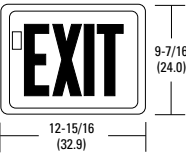
MOUNTING

All dimensions are in inches (centimeters). For VR option, add 1/4" to height and width. Add 1/8" depth for single face; 1/4" depth for double face.

Shipping weight: LE - 4 lbs (1.8 kgs)
LE EL N - 5 lbs (2.3 kgs)
LRE - 4 lbs (1.8 kgs)
LRE EL N - 5 lbs (2.3 kgs)

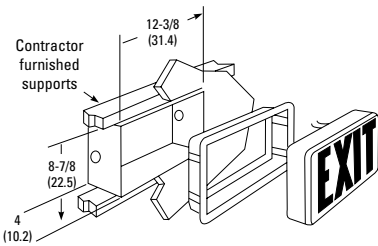


STANDARD MOUNTING



Wall opening dimensions: 8-3/4" H x 12-3/8" W x 1-3/4" D

MOUNTING WITH OPTIONAL ROUGH-IN KIT (ELA ERK)



Wall opening dimensions: 8-7/8" H x 12-3/8" W x 4" D

FEATURES & SPECIFICATIONS

INTENDED USE — The CLX is a linear lighting solution that is available in multiple lengths, lumen packages and distributions. Designed for versatility, the CLX can address virtually any indoor lighting need. The CLX is also offered in standard and high efficacy configurations and capable of being continuous row mounted or installed as a stand-alone fixture. Ideal for uplight and downlight in commercial, retail, manufacturing, warehouse, and display applications. **Certain airborne contaminants can diminish the integrity of acrylic and/or polycarbonate.** [Click here for Acrylic/Polycarbonate Compatibility table for suitable uses.](#)

CONSTRUCTION — Channel and cover are formed from code-gauge cold-rolled steel. Housing and lens endcaps are injection molded plastic to provide a more architectural look and feel. The endcaps come standard with a 7/8" knock out for continuous mounting but can be ordered without.

Finish: Paint options include high-gloss, baked white polyester (WH), galvanized (GALV), matte black (MB) and smoke gray (SKGY). Five-stage iron phosphate pre-treatment ensures superior paint adhesion and rust resistance.

OPTICS — Offered with acrylic lens and less lens configurations. Provides a choice of optical distributions including, wide, narrow, and aisle.

ELECTRICAL — Utilizes high-output LEDs integrated on a two-layer circuit board, ensuring cool-running operation. Optional internal pluggable wiring harness for reduced labor cost in row mounting applications. (See PLR ordering information on page 15.) Electronic LED driver is multi-volt input and 0-10V dimming standard (see Operational Data on page 12 for actual wattage consumption). This fixture is designed to withstand a maximum line surge of 2.5kV at 0.75kA combination wave for indoor locations, for applications requiring higher level of protection additional surge protection must be provided.

L70>100,000 hours at 25°C.

LEDs provide nominal 80 CRI or 90CRI at 3000 K, 3500 K, 4000 K, or 5000 K.

Lumen output up to 2,500 lumens per foot.

INSTALLATION — Fixture may be ceiling or wall mounted (with or without THCLX hanger or angle mounted with CLXANGBRT), pendant or stem mounted with appropriate mounting options.

WARNING — Removing the lens and opening the fixture during installation exposes the LEDs, putting them at risk for damage.

If you plan to surface mount the fixture, we recommend using the THCLX. This eliminates the need to open the fixture.

If you plan to continuous row mount, we recommend using the PLR wiring harness option. This eliminates the need to open the fixture.

Damage to the LEDs caused during installation will not be covered under the warranty.

LISTINGS — CSA certified to US and Canadian safety standards. For use in damp locations between -4°F (-20°C) and 104°F (40°C). Optional High Ambient (HA) ranging to 122°F (50°C) available on certain lumen packages (See ambient temperature chart for additional information).

DesignLights Consortium® (DLC) Premium qualified product and DLC qualified product. Not all versions of this product may be DLC Premium qualified or DLC qualified. Please check the DLC Qualified Products List at www.designlights.org/QPL to confirm which versions are qualified.

WARRANTY — 5-year limited warranty. Complete warranty terms located at:

www.acuitybrands.com/resources/terms-and-conditions

Note: Actual performance may differ as a result of end-user environment and application.

All values are design or typical values, measured under laboratory conditions at 25 °C.

Specifications subject to change without notice.

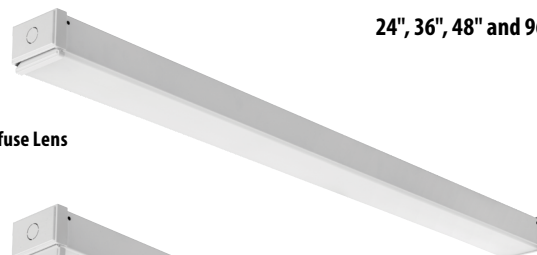
| |
|----------------|
| Catalog Number |
| Notes |
| Type |

LED Linear

CLX

24", 36", 48" and 96" Lengths

Flat Diffuse Lens



Round Diffuse Lens



Wide Diffuse Lens



Stock configurations are offered for shorter lead times:

| Stock Part Number | UPC | DLC QPL Product ID | DLC Premium |
|---|----------------|--------------------|-------------|
| CLX L48 3000LM SEF FDL MVOLT GZ10 40K 80CRI WH | 00191723525816 | PJANKZR4 | Yes |
| CLX L48 3000LM SEF FDL MVOLT GZ10 50K 80CRI WH | 00191723525885 | PKW32VKL | Yes |
| CLX L48 5000LM SEF FDL MVOLT GZ10 40K 80CRI WH | 00191723525939 | P77I8Z20 | Yes |
| CLX L48 5000LM SEF FDL MVOLT GZ10 50K 80CRI WH | 00191723525908 | P8A42C1H | Yes |
| CLX L96 6000LM SEF FDL MVOLT GZ10 40K 80CRI WH | 00191723525861 | PPFTGRBV | Yes |
| CLX L96 6000LM SEF FDL MVOLT GZ10 50K 80CRI WH | 00191723525915 | PW6250TE | Yes |
| CLX L96 10000LM SEF FDL MVOLT GZ10 40K 80CRI WH | 00191723525922 | PYKOC7EW | Yes |
| CLX L96 10000LM SEF FDL MVOLT GZ10 50K 80CRI WH | 00191723525830 | PKYPL35K | Yes |
| CLX L48 3000LM SEF RDL MVOLT GZ10 40K 80CRI WH | 00191723525960 | PJANKZR4 | Yes |
| CLX L48 3000LM SEF RDL MVOLT GZ10 50K 80CRI WH | 00191723525892 | PKW32VKL | Yes |
| CLX L48 5000LM SEF RDL MVOLT GZ10 40K 80CRI WH | 00191723525854 | P77I8Z20 | Yes |
| CLX L48 5000LM SEF RDL MVOLT GZ10 50K 80CRI WH | 00191723525946 | P8A42C1H | Yes |
| CLX L96 6000LM SEF RDL MVOLT GZ10 40K 80CRI WH | 00191723525878 | PPFTGRBV | Yes |
| CLX L96 6000LM SEF RDL MVOLT GZ10 50K 80CRI WH | 00191723525823 | PD0SSIAD | Yes |
| CLX L96 10000LM SEF RDL MVOLT GZ10 40K 80CRI WH | 00191723525953 | PYKOC7EW | Yes |
| CLX L96 10000LM SEF RDL MVOLT GZ10 50K 80CRI WH | 00191723525847 | PKYPL35K | Yes |

A+ Capable Luminaire

This item is an A+ capable luminaire, which has been designed and tested to provide consistent color appearance and out-of-the-box control compatibility with simple commissioning.

- All configurations of this luminaire meet the Acuity Brands' specification for chromatic consistency
- This luminaire is part of an A+ Certified solution for nLight® or XPoint™ Wireless control networks marked by a [shaded background](#)*

To learn more about A+, visit www.acuitybrands.com/aplus.

*See ordering tree for details

ORDERING INFORMATION

Lead times will vary depending on options selected. Consult with your sales representative.

Example: CLX L48 5000LM SEF WDL MVOLT GZ10 40K 80CRI WH

| Series | Length | Nominal lumens | Performance package | Louver | Lens |
|----------------|------------------------|--------------------------------------|--|--|--|
| CLX LED linear | L24 24" ^{1,2} | 1500LM 1,500 lumens | SEF Standard efficiency ⁵ HEF Premium efficiency | (Blank) Less louver SBLW Straight blade louver, white ⁶ SBLMB Straight blade louver, matte black ⁶ SBLGV Straight blade louver, galvanized ⁶ SBLSKGY Straight blade louver, smoke gray ⁶ | L/Lens Less lens FDL Flat diffuse ^{7,8} RDL Round diffuse ^{7,8} WDL Wide diffuse ^{7,8} |
| | | 2000LM 2,000 lumens | | | |
| | | 2500LM 2,500 lumens | | | |
| | | 3500LM 3,500 lumens | | | |
| | | 4500LM 4,500 lumens | | | |
| | | 5000LM 5,000 lumens ^{3,4} | | | |
| | L36 36" ² | 2250LM 2,250 lumens | | | |
| | | 3000LM 3,000 lumens | | | |
| | | 3750LM 3,750 lumens | | | |
| | | 5250LM 5,250 lumens | | | |
| | | 6750LM 6,750 lumens | | | |
| | | 7500LM 7,500 lumens ^{3,4} | | | |
| | L48 48" | 3000LM 3,000 lumens | | | |
| | | 4000LM 4,000 lumens | | | |
| | | 5000LM 5,000 lumens | | | |
| | | 7000LM 7,000 lumens ² | | | |
| | | 9000LM 9,000 lumens ² | | | |
| | | 10000LM 10,000 lumens ^{2,4} | | | |
| | L96 96" | 6000LM 6,000 lumens | | | |
| | | 8000LM 8,000 lumens | | | |
| | | 10000LM 10,000 lumens | | | |
| | | 14000LM 14,000 lumens ^{2,4} | | | |
| | | 18000LM 18,000 lumens ^{2,4} | | | |
| | | 20000LM 20,000 lumens ^{2,4} | | | |

| Distribution | Voltage | Driver ¹⁴ | Color temperature | Coloring rendering index |
|--|------------------------------|---------------------------|-------------------|--------------------------|
| (Blank) General | MVOLT 120-277V ¹⁰ | 277 277V | 30K 3000 K | 80CRI 80 CRI |
| ND Narrow ^{8,9} | 120 120V | 347 347V ^{12,13} | 35K 3500 K | 90CRI 90 CRI |
| WD Wide ^{8,9} | 208 208V ¹¹ | 480 480V ^{12,13} | 40K 4000 K | |
| AD2 Aisle, 24° off center ^{8,9} | 240 240V ¹¹ | | 50K 5000 K | |

| Options | Finish |
|---|---|
| PS1050 Emergency battery pack, 10W, CA Title 20 Noncompliant ^{2,11,13,16,17} E10WLCP Emergency battery pack, 10W Linear Constant Power, Certified in CA Title 20 MAEDBS ^{2,11,13,16,17} BGTD Generator transfer device, not available with PS1050 ^{13,16,18} OCS 5', 18/3 Reloc selectable One Pass cable ¹⁶ HA High ambient, for use in ambient temperatures up to 50°C ¹¹ EPNKO Decorative endplate, no knock out ¹⁹ OUTCTR Wiring leads pulled through back center of fixture ²⁰ OUTEND Wiring leads pulled through end of fixture ²¹ Cord Sets: CS1W Straight blade plug, 120V ^{10,16} CS3W NEMA twist-lock plug, 120V ^{10,16} CS7W Straight blade plug, 277V ^{10,16} CS11W NEMA twist-lock plug, 277V ^{10,16} CS25W NEMA twist-lock plug, 347V ^{10,16} CS97W NEMA twist-lock plug, 480V ^{10,16} CS93W 600V SEOW white cord, no plug (no voltage required) CS6WG16STOWD5D 6' white cord, 16/5, no plug, includes low voltage dimming wires (no voltage required) ¹⁵ | WH White GALVW Galvanized with white lens end caps GALVB Galvanized with black lens end caps MB Matte black SKGYW Smoke gray with white lens end caps SKGYB Smoke gray with black lens end caps |
| PLR Plug-in wiring, see page 16 for ordering information PLR1LVG Plug-in wiring, low voltage dimming ²² RRL RELOC®-ready luminaire. See page 15 for ordering information SPD Surge protection device, provides up to 6kV protection ^{16,20} USPOM Assembled in the United States nLight® Wireless: ^{23,24} NLTAIR2 RES7 nLight® Generation 2 enabled PIR integral occupancy sensor with automatic dimming photocell NLTAIR2 RES7PDT nLight AIR Generation 2 enabled dual technology integral occupancy sensor with automatic dimming photocell NLTAIR2 RIO No sensor control | nLight® Wired: ^{23,25} N100 nLight® without lumen management NES7 nLight® nES 7 PIR integral occupancy sensor ²⁶ NESPDT7 nLight® nES PDT 7 dual technology integral occupancy control ²⁶ NES7ADCX nLight® nES 7 ADCX PIR integral occupancy sensor with automatic dimming photocell ²⁶ NESPDT7ADCX nLight® nES PDT 7 dual technology integral occupancy sensor with automatic dimming photocell ²⁶ Individual controls: ^{23,25} MSD7 PIR integral occupancy sensor MSDPDT7 PDT 7 dual technology integral occupancy control MSD7ADC PIR integral occupancy sensor with automatic dimming control photocell MSDPDT7ADC PDT integral occupancy sensor with automatic dimming control photocell |

See Accessories and footnotes on next page

| Accessories: Order as separate catalog number. | | | |
|--|--|--------------------------------|---|
| Mounting: | | | |
| ZACVH | Aircraft cable 120" (one pair) | THCLX ____ | Tong hanger (Must specify color) (one pair) ²⁸ |
| ZAC120 | One adjustable aircraft cable with canopy 120" ²⁷ | CLXANGBKT ____ | Angle bracket, (Must specify color) (one pair) ²⁸ |
| ZACFP120 | One adjustable aircraft cable with feed (3 conductor) and canopy, 120" ²⁷ | HC36 | Hanger chain, 36" (one pair) |
| ZACFPD120 | One adjustable aircraft cable with feed (5 conductor) and canopy 120" ²⁷ | Sensors & Controls: | |
| ZAC240 | One adjustable aircraft cable with canopy 240" ²⁷ | LSXR | Sensor Switch ° LSXR occupancy sensor ²⁹ |
| ZACFP240 | One adjustable aircraft cable with feed (3 conductor) and canopy, 240" ²⁷ | NPP16D | nLight® switching/dimming module |
| ZACFPD240 | One adjustable aircraft cable with feed (5 conductor) and canopy 240" ²⁷ | NPP16DER | nLight® switching/dimming module with emergency relay |
| SQ_ | Stem kit, 2" increments up to 48" ²⁷ | rPP20D | nLight® air dimming/switching module |
| | | XPA CMR80 | XPoint™ Wireless 0-10V relay, external, 55°C max ambient |
| | | Reflectors: | |
| | | CLXRW24_ | Wide decorative 24" reflector, (Must specify color) ³⁰ |
| | | CLXRW36_ | Wide decorative 36" reflector, (Must specify color) ³⁰ |
| | | CLXRW48_ | Wide decorative 48" reflector, (Must specify color) ³⁰ |
| | | CLXRW96_ | Two wide decorative 48" reflectors, (Must specify color) ³⁰ |
| | | CLXRWU24_ | Wide decorative 24" reflector with uplight, (Must specify color) ³⁰ |
| | | CLXRWU36_ | Wide decorative 36" reflector with uplight, (Must specify color) ³⁰ |
| | | CLXRWU48_ | Wide decorative 48" reflector with uplight, (Must specify color) ³⁰ |
| | | CLXRWU96_ | Two wide decorative 48" reflectors with uplight, (Must specify color) ³⁰ |
| | | CLXRN24 | Narrow 24" reflector, (Must specify color) ³¹ |
| | | CLXRN36 | Narrow 36" reflector, (Must specify color) ³¹ |
| | | CLXRN48 | Narrow 48" reflector, (Must specify color) ³¹ |
| | | CLXRN96 | Two narrow 48" reflectors, (Must specify color) ³¹ |
| | | Wireguards: | |
| | | WGCLX24_ | 24" wireguard, (Must specify color) ³² |
| | | WGCLX36_ | 36" wireguard, (Must specify color) ³² |
| | | WGCLX48_ | 48" wireguard, XX, (Must specify color) 96" fixture requires two ³² |

Notes

- Not available with OUTCTR option.
- Not available with HA option.
- Not available with SEF when ordered in combination with EZ1.
- Not available with NLTAIR2 RES7, NLTAIR2 RES7PDT, or NLTAIR2 RIO.
- Not available with EZ1 when ordered with L24 with 5000LM or L36 with 7500LM.
- When ordered with L24 only available with 1500LM or 2000LM in combination with GZ10 driver. Not for use with THCLX, CLXANGBKT, CLX reflectors or WGCLX accessories. Not available with RDL lens options.
- Only available with general distribution.
- Not available with CLXRN accessories.
- Available L/LENS only.
- Not available with PS1050, E10WLCP, or BGTD.
- Not available with BGTD option.
- Voltage selected utilizes a step-down transformer. Not available with L24 when ordered with N100. Not available with PS1050, E10WLCP or BGTD option.
- Requires SPD option.
- When continuous row mounting, fixtures must all have the same driver selection.
- Not available with Individual controls, nLight wired networking, nLight wireless networking, nLight wireless zone control options.
- Must specify voltage.
- Not available with L24 or L36. Not available with L48 in combination with N100.
- Available with L48 or L96 only. 20 Not available with PS1050 or E10WLCP options. Not available with 208 or 240V. Not available Individual controls, NLight Wired, or NLight Wireless options.
- Not available OUTEND.
- Required with PS1050, E10WLCP, BGTD, XAD, or XAD924.
- Not available with PLR options.
- Not available with XPoint, Individual controls, NLight Wired, or NLight Wireless options.
- Sensor housing will be the same color as lens end caps.
- Not available with L24 in combination with 5000LM, not available with L36 in combination with 7500LM, not available with L48 in combination with 10000LM, and not available with L96 in combination with 14000LM, 18000LM, or 20000LM. Not available with PLRs containing low voltage dimming wires.
- Not available with any other control option. Requires EZ1.
- Requires N100 option.
- Ships standard as white.
- Not available with louver, wireguards, wide reflectors.
- More configurations on [LSXR Specification Sheet](#).
- L24 reflector is 22.65", L36 reflector is 34.01", L48 reflector is 46.80", L96 comes with two L48 reflectors.
- For use with L/LENS fixtures only. L24 reflector is 22.75", L36 reflector is 34.20", L48 reflector is 46.85", L96 comes with two L48 reflectors.
- Not for use with CLX wide reflector accessories.

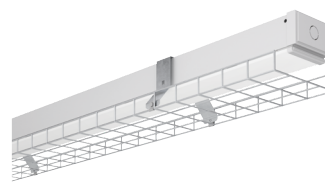
OPTIONS AND ACCESSORIES



Narrow reflector
Ships separately from fixture.
Order as:
CLXRN24_ ____
CLXRN36_ ____
CLXRN48_ ____
CLXRN96_ ____



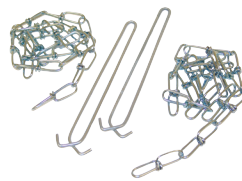
Wide decorative reflector
Ships separately from fixture.
Order as:
CLXRW24_ ____
CLXRW36_ ____
CLXRW48_ ____
CLXRW96_ ____



Wireguard
Ships separately from fixture:
96" fixture requires two WGCLX48.
Order as:
WGCLX24_ ____
WGCLX36_ ____
WGCLX48_ ____



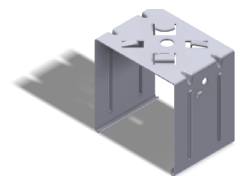
Aircraft Cable with Canopy
Available in 120" or 240"
Order as:
ZAC120 ____
ZAC240 ____



HANGER CHAIN
36" chain with Y hanger. ships as a pair
Order as:
HC36 ____



ZACVH HANGER
10' Aircraft cable with Y hanger.
Order as:
ZACVH ____



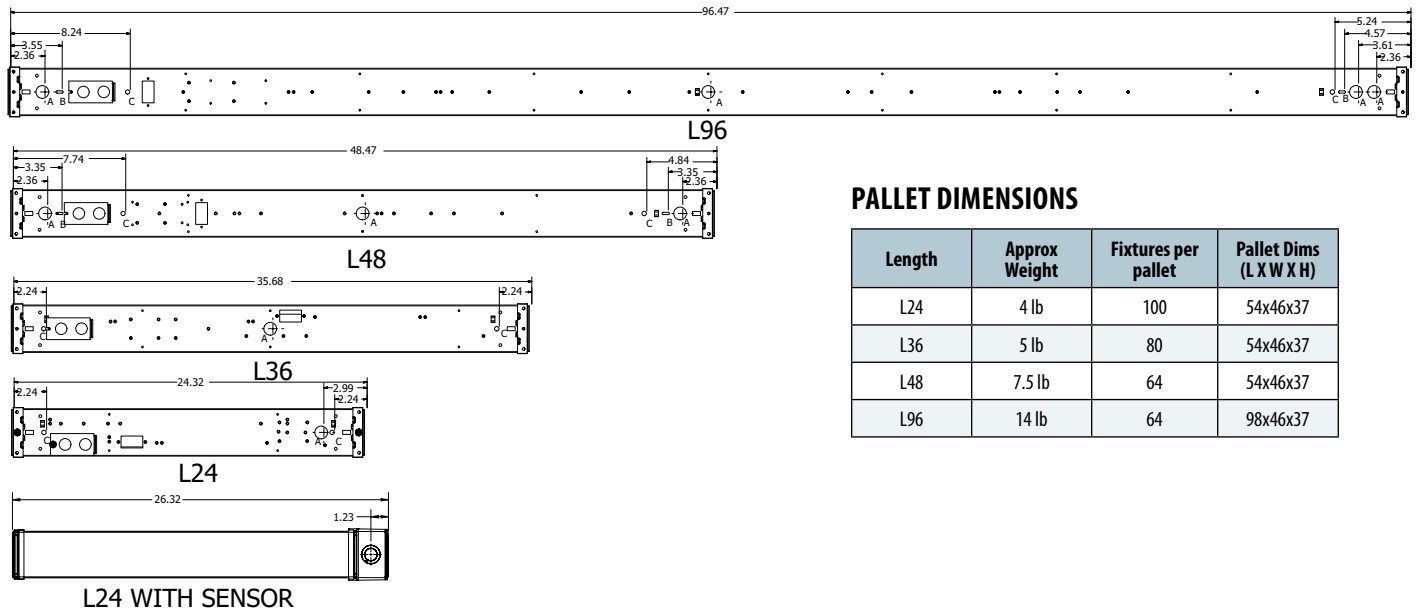
Tong hanger
Ships as a pair
Order As:
THCLX_ ____

DIMENSIONS

All dimensions are in inches (centimeters) unless otherwise indicated.
Dimensions may vary with options or accessories.

INTEGRATED SENSOR ADDS 2.0 INCHES TO STANDALONE FIXTURE LENGTH
HOUSING END CAP ADDS 0.236 INCHES TO FIXTURE LENGTH PER SIDE. DIMENSIONS BELOW INCLUDE ENDCAPS.

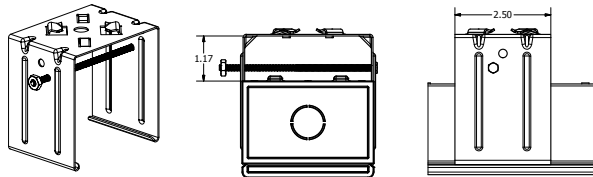
A - 7/8" KNOCK OUT
B - 0.5" by 0.16" SLOT
C - 0.3" DIA HOLE



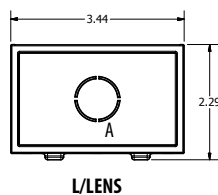
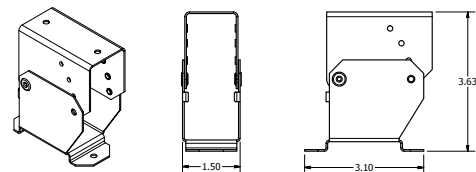
PALLET DIMENSIONS

| Length | Approx Weight | Fixtures per pallet | Pallet Dims (L X W X H) |
|--------|---------------|---------------------|-------------------------|
| L24 | 4 lb | 100 | 54x46x37 |
| L36 | 5 lb | 80 | 54x46x37 |
| L48 | 7.5 lb | 64 | 54x46x37 |
| L96 | 14 lb | 64 | 98x46x37 |

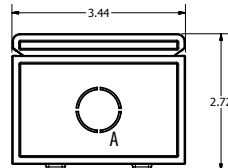
THCLX - SHIPS TWO PER ORDER,
UTILIZES A #8 HEX HEAD SCREW AND NUT
FIXTURE SITS 1.3 INCHES FROM STRUCTURE WHEN MOUNTED



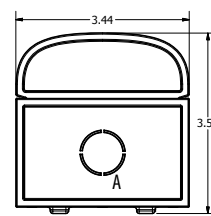
CLXANGBKT - SHIPS TWO PER ORDER
HOLES TO MOUNTING STRUCTURE ARE 0.175" DIA, 2.5" APART
FIXTURE SITS APPROXIMATELY 3.5" FROM STRUCTURE
WHEN MOUNTED HORIZONTAL TO STRUCTURE



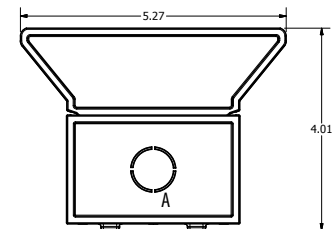
L/LENS



FDL



RDL



WDL

PHOTOMETRICS

See www.lithonia.com.