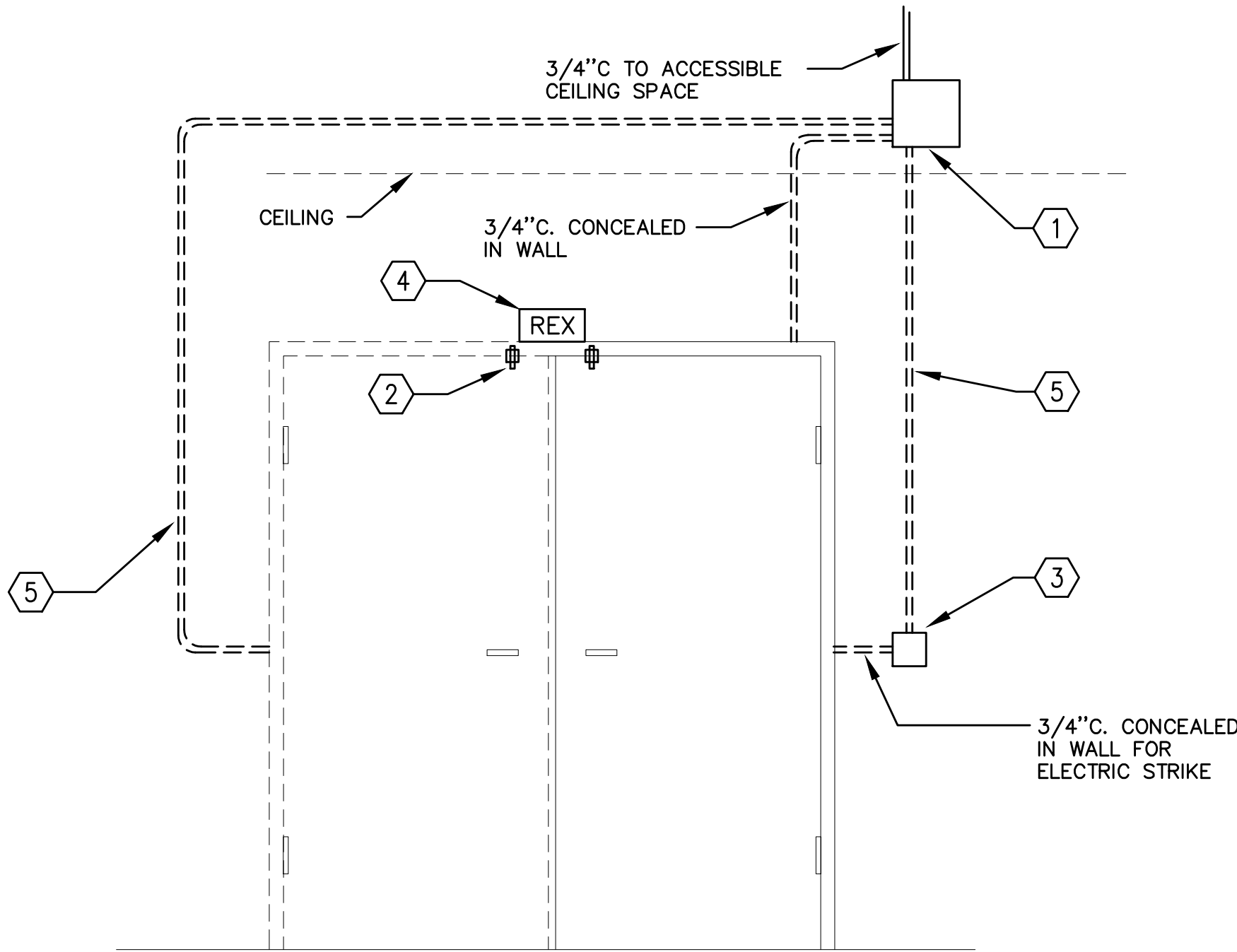


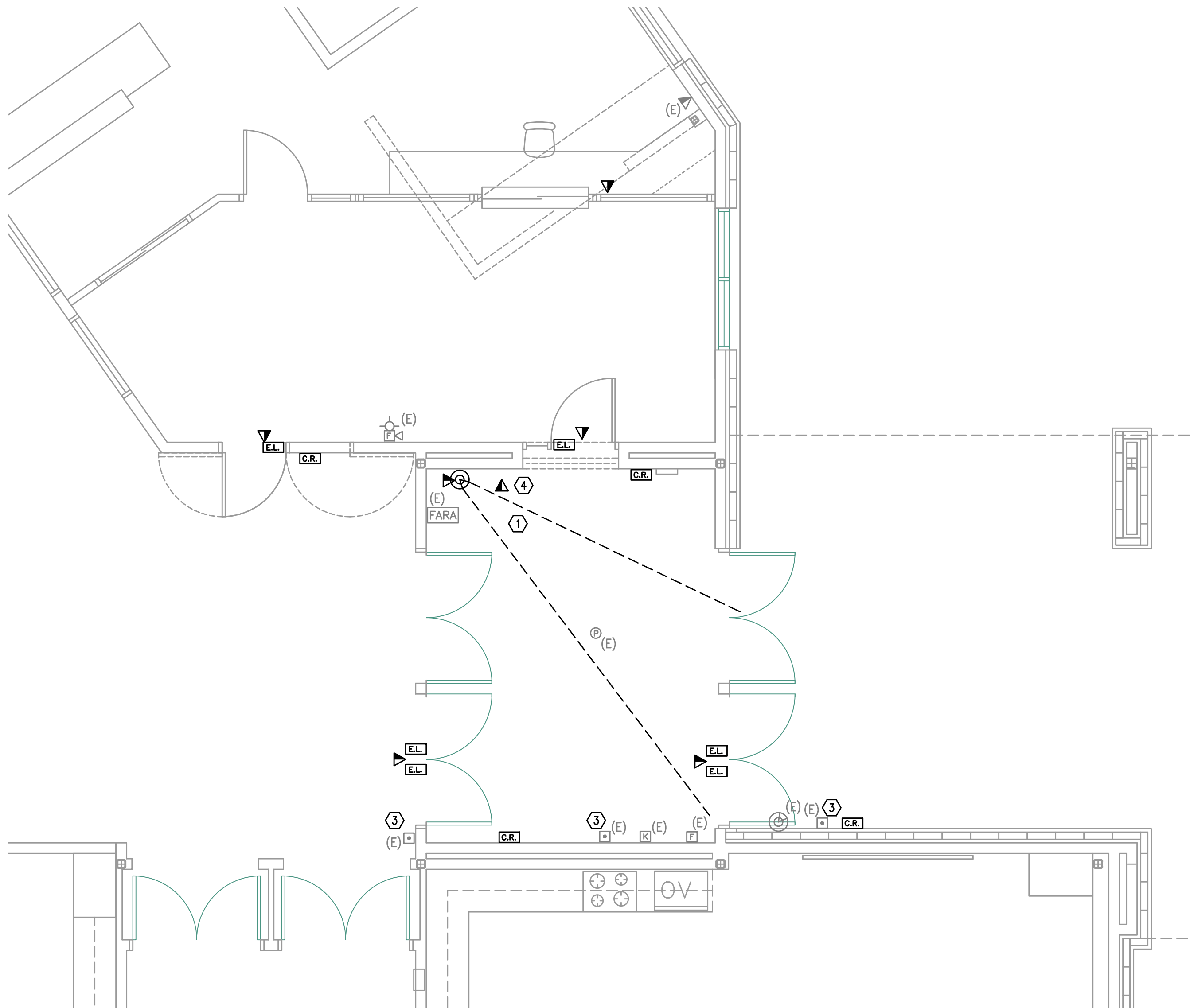
Copyright © 2017 MFA Architects
Bend-La Pine Schools Security Upgrades
Sky View Middle School
63555 NE 18th Street
Bend, Oregon 97701
1/10/2018



ACCESS CONTROL NOTES

1. 12"x12"x6" NEMA BOX, HOFFMAN OR APPROVED EQUAL, ON SECURED SIDE OF DOOR. TERMINATE (2) CATEGORY 6 CABLES INSIDE NEMA ENCLOSURE. SCHOOL DISTRICT WILL SUPPLY 'POE' DOOR CONTROLLER.
2. DOOR STATUS CONTACT, ONLY NEEDED WHEN STRIKE DOES NOT HAVE INTEGRAL SWITCH.
3. DOUBLE GANG BOX WITH SINGLE GANG REDUCER RING IF NEEDED BY SECURITY DEVICE. COORDINATE WITH ARCHITECT TO MEET ADA REQUIREMENTS. PROVIDE 24AWG, 12 CONDUCTOR TO DOOR CONTROLLER.
4. 'REX' ONLY NEEDED AT LOCATIONS WITH ELECTRIC STRIKE (CONFIRM WITH DOOR HARDWARE). PROVIDE 18AWG, 6 CONDUCTOR TO DOOR CONTROLLER.
5. 3/4" CONDUIT CONCEALED IN WALL WITH 16AWG 6 CONDUCTOR TO CRASH BAR OR ELECTRIC STRIKE.

2 ACCSS CONTROL DETAIL
T2.1 SCALE: NOT TO SCALE



1 ENLARGED FLOOR PLAN — TELCOM
T2.1 SCALE: 1/4" = 1'-0"

NOTES:

1. APPROXIMATE VIEW REQUIRED OF CAMERA, VERIFY PROPER FRAMING OF VIEW WITH STAFF AT TIME OF INSTALLATION. PROVIDE (2) CATEGORY 6 CABLES FROM NEAREST MDF/IDF.
2. PROVIDE 'TALKPHONE MODEL VOIP-200C' INTERCOM CALL BUTTON AND (2) CATEGORY 6 CABLING TO NEAREST MDF/IDF, TERMINATE TO PATCH PANEL FOR SCHOOL DISTRICT CONNECTION
3. EXISTING ADA DOOR OPENER BUTTON.

MFA
Consulting Engineers
2007 S.E. Ash St.
Portland, OR 97214
PHN: (503) 234-0548
FAX: (503) 234-0677
CONTACT: GARY ADOVNIK



B B T
A R C H I T E C T S
1160 NW Simpson Ave. - Suite 100 - Bend, Oregon 97702
t 541.382.5535 | f 541.389.8033

Bend-La Pine Schools SECURITY UPGRADES
Sky View Middle School
63555 NE 18th Street
Bend, Oregon 97701

ISSUED:	DATE:
PERMIT SET / BID SET	02/14/18

JOB NUMBER:	1708
DRAWN BY:	GMA
CHECKED BY:	RLC

SHEET TITLE
ENLARGED
FLOOR PLAN
TELCOM

SHEET NUMBER
T2.1