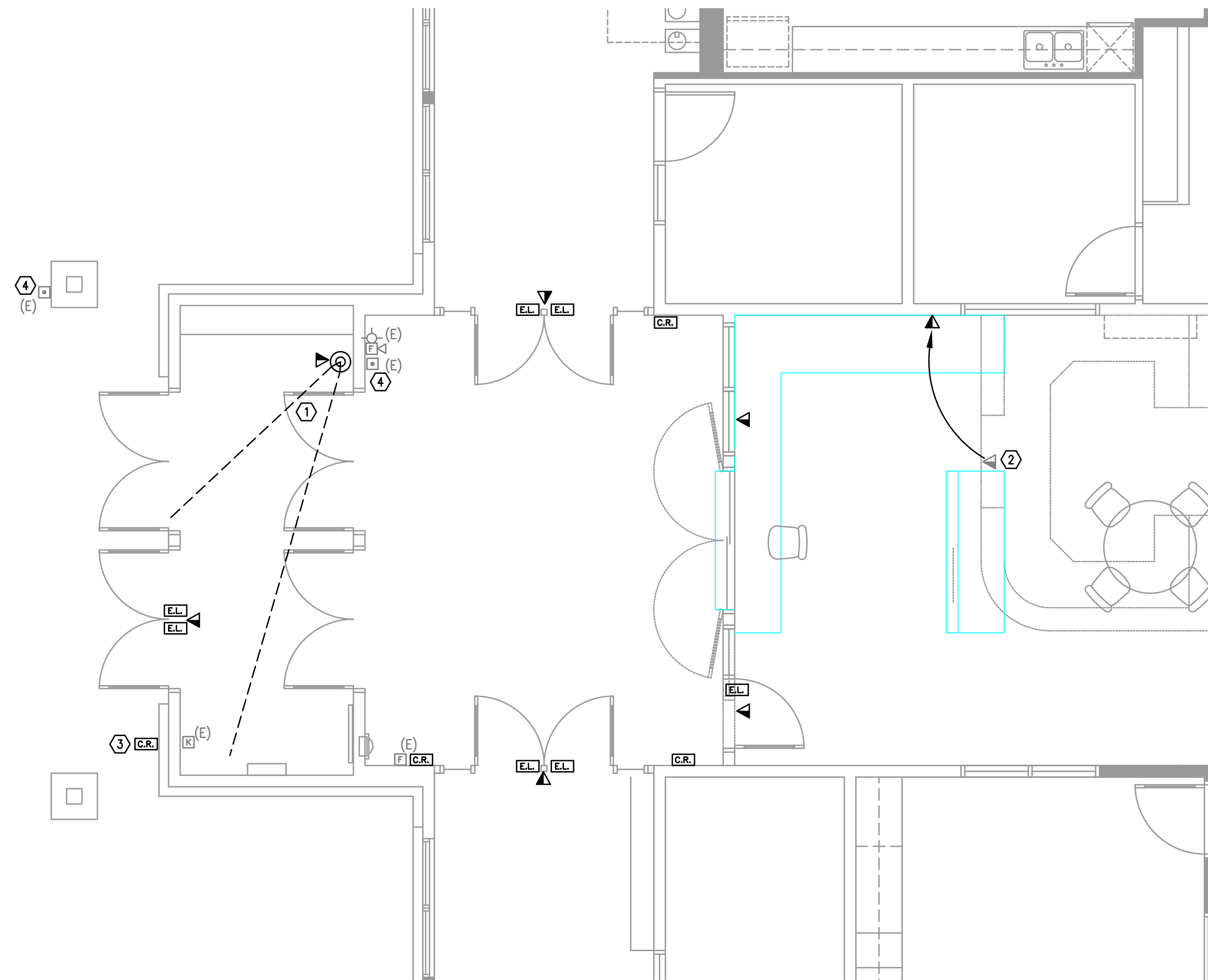


ACCESS CONTROL NOTES

1. 12"x12"x6" NEMA BOX, HOFFMAN OR APPROVED EQUAL, ON SECURED SIDE OF DOOR, TERMINATE (2) CATEGORY 6 CABLES INSIDE NEMA ENCLOSURE. SCHOOL DISTRICT WILL SUPPLY 'POE' DOOR CONTROLLER.
2. DOOR STATUS CONTACT, ONLY NEEDED WHEN STRIKE DOES NOT HAVE INTEGRAL SWITCH.
3. DOUBLE GANG BOX WITH SINGLE GANG REDUCER RING IF NEEDED BY SECURITY DEVICE. COORDINATE WITH ARCHITECT TO MEET ADA REQUIREMENTS. PROVIDE 24AWG, 12 CONDUCTOR TO DOOR CONTROLLER.
4. 'REX' ONLY NEEDED AT LOCATIONS WITH ELECTRIC STRIKE (CONFIRM WITH DOOR HARDWARE). PROVIDE 18AWG, 6 CONDUCTOR TO DOOR CONTROLLER.
5. 3/4" CONDUIT CONCEALED IN WALL WITH 16AWG 6 CONDUCTOR TO CRASH BAR OR ELECTRIC STRIKE.

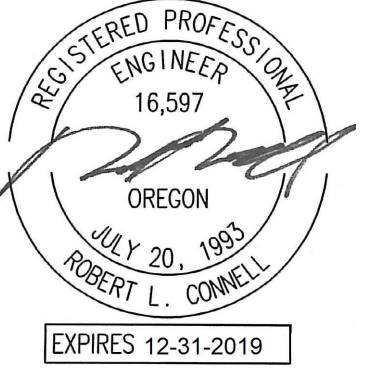
2 ACCSS CONTROL DETAIL
T2.1 SCALE: NOT TO SCALE



1
T2.1 ENLARGED FLOOR PLAN – TELCOM
SCALE: 1/4" = 1'-0"

NOTES:

1. APPROXIMATE VIEW REQUIRED OF CAMERA, VERIFY PROPER FRAMING OF VIEW WITH STAFF AT TIME OF INSTALLATION. PROVIDE (2) CATEGORY 6 CABLES FROM NEAREST MDF/IDF.
2. RELOCATE EXISTING OUTLET, TERMINATE, AND TEST.
3. ROUGH-IN FOR CARD READER IS EXISTING.
4. EXISTING ADA DOOR OPENER BUTTON.



B B T

A R C H I T E C T S

1160 av Simpson Ave. - Suite 100 - Bend, Oregon 97702
t 541.382.5335 | f 541.389.8003

Bend-La Pine Schools SECURITY UPGRADES
W.E. Miller Elementary School
300 NW Crosby Drive
Bend, Oregon 97703

ISSUED:	DATE:
PERMIT SET / BID SET	02/14/18

JOB NUMBER:	1708
DRAWN BY:	GMA
CHECKED BY:	RLC

SHEET TITLE

ENLARGED
FLOOR PLAN
TELCOM

SHEET NUMBER

T2.1

MFIA
INC. Consulting Engineers
2007 S.E. Ash St.
Portland, OR 97214
PHN: (503) 234-0548
FAX: (503) 234-0677
WWW.MFIA-ENG.COM
CONTACT: GARY ADOVNIK