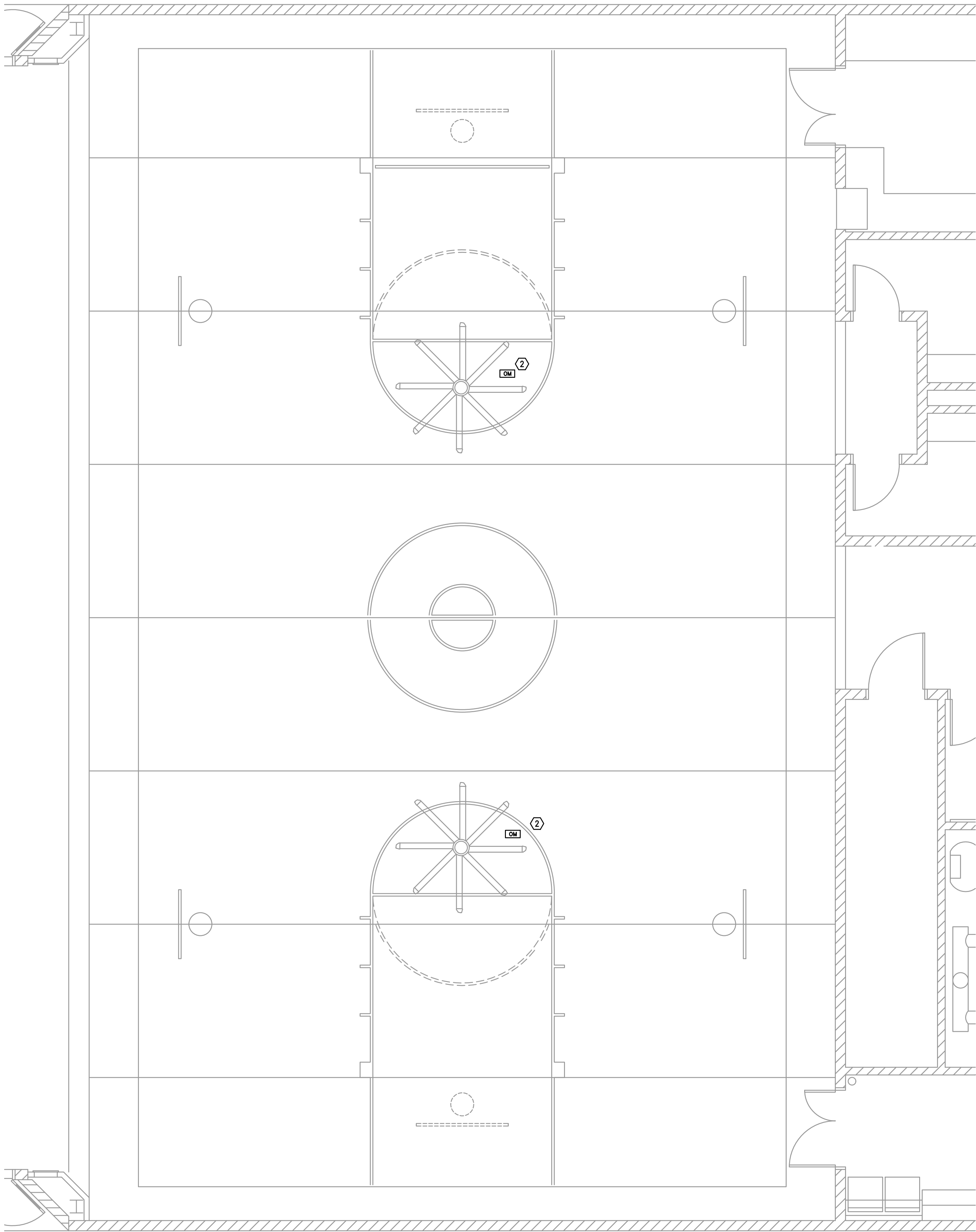
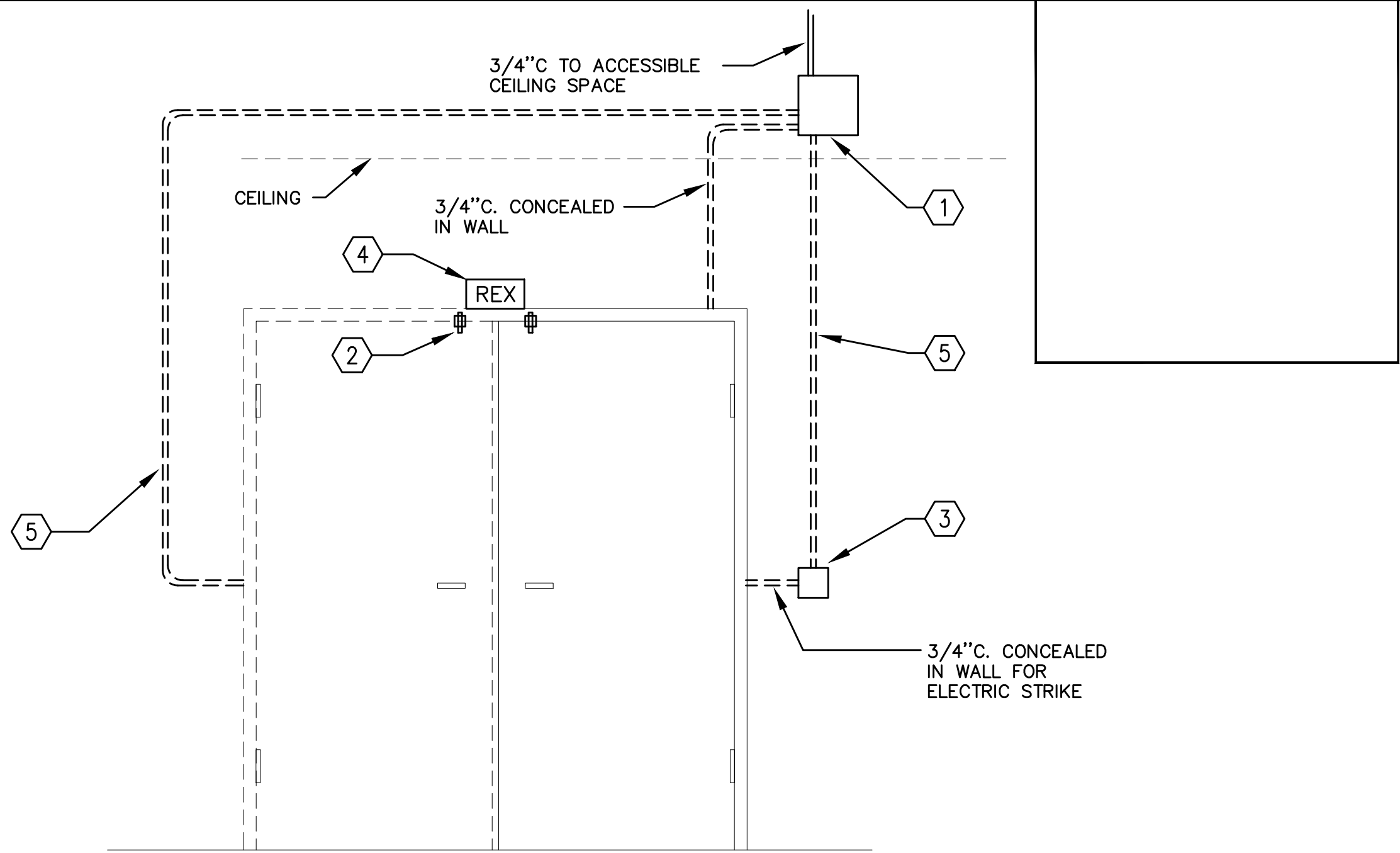


Copyright © 2017 MFA Architects
Bend-La Pine Schools Security Upgrades
20805 Cooley Road
Bend, Oregon 97701
1140 av Simpson Ave. - Suite 100 - Bend, Oregon 97702
t 541.389.8033 | f 541.389.8033



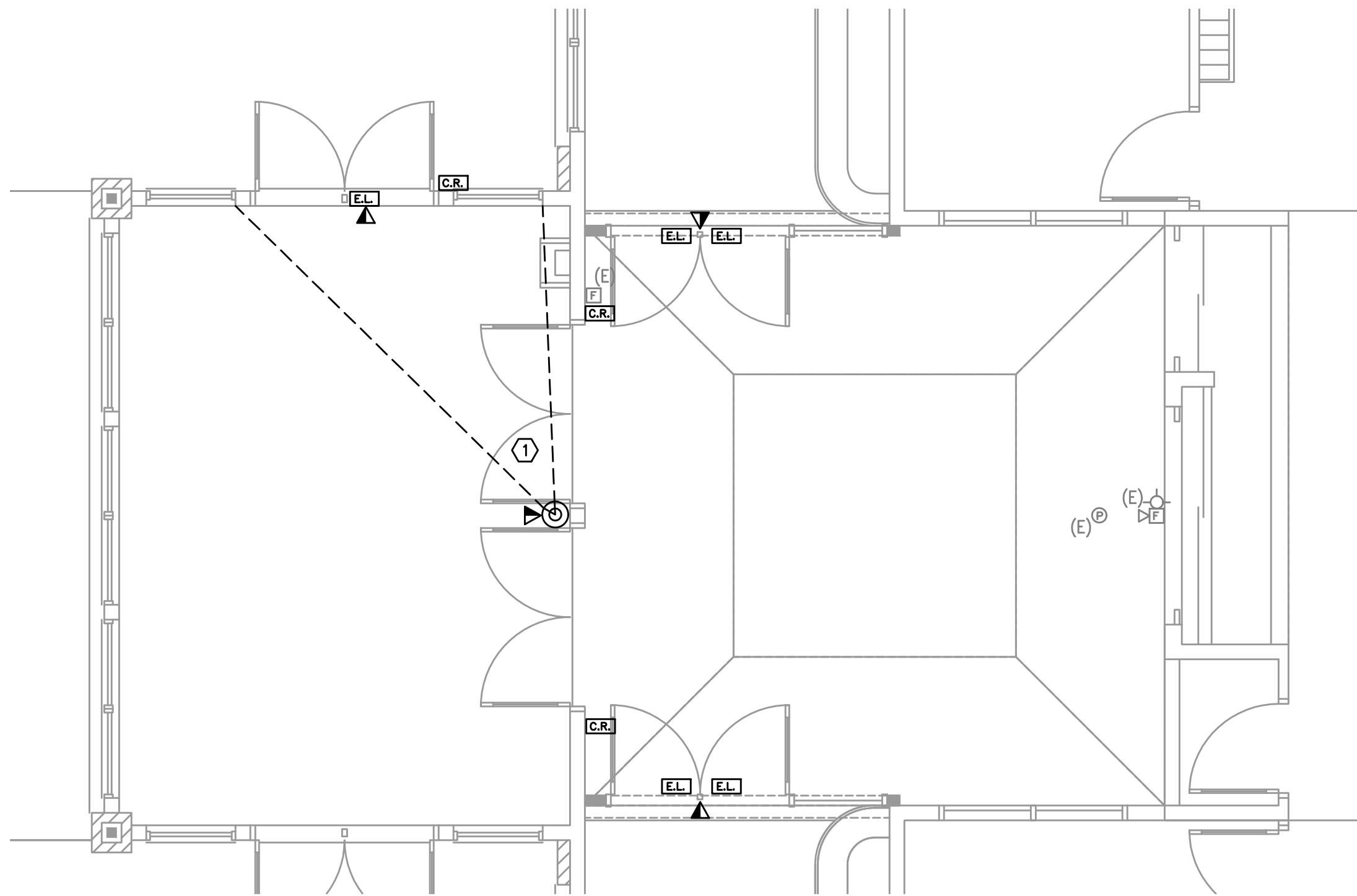
2
T2.1
ENLARGED FLOOR PLAN – TELCOM
SCALE: 1/4" = 1'-0"



ACCESS CONTROL NOTES

- 12"x12"x6" NEMA BOX, HOFFMAN OR APPROVED EQUAL, ON SECURED SIDE OF DOOR. TERMINATE (2) CATEGORY 6 CABLES INSIDE NEMA ENCLOSURE. SCHOOL DISTRICT WILL SUPPLY 'POE' DOOR CONTROLLER.
- DOOR STATUS CONTACT, ONLY NEEDED WHEN STRIKE DOES NOT HAVE INTEGRAL SWITCH.
- DOUBLE GANG BOX WITH SINGLE GANG REDUCER RING IF NEEDED BY SECURITY DEVICE. COORDINATE WITH ARCHITECT TO MEET ADA REQUIREMENTS. PROVIDE 24AWG, 12 CONDUCTOR TO DOOR CONTROLLER.
- 'REX' ONLY NEEDED AT LOCATIONS WITH ELECTRIC STRIKE (CONFIRM WITH DOOR HARDWARE). PROVIDE 18AWG, 6 CONDUCTOR TO DOOR CONTROLLER.
- 3/4" CONDUIT CONCEALED IN WALL WITH 16AWG 6 CONDUCTOR TO CRASH BAR OR ELECTRIC STRIKE.

2
T2.1
ACCSS CONTROL DETAIL
SCALE: NOT TO SCALE



1
T2.1
ENLARGED FLOOR PLAN – TELCOM
SCALE: 1/4" = 1'-0"

NOTES:

- APPROXIMATE VIEW REQUIRED OF CAMERA, VERIFY PROPER FRAMING OF VIEW WITH STAFF AT TIME OF INSTALLATION. PROVIDE (2) CATEGORY 6 CABLES FROM NEAREST MDF/DF.
- OUTPUT MODULE TO CONNECT FIRE ALARM PANEL TO POWER RELAY TO SHUT DOWN FANS WHEN FIRE ALARM ACTIVATED.

MFA
Consulting Engineers
2007 S.E. Ash St.
Portland, OR 97214
PHN: (503) 234-0548
FAX: (503) 234-0677
CONTACT: GARY ADOVNIK



B B T
ARCHITECTS
1140 av Simpson Ave. - Suite 100 - Bend, Oregon 97702
t 541.389.8033 | f 541.389.8033

Bend-La Pine Schools SECURITY UPGRADES
Lava Ridge Elementary
20805 Cooley Road
Bend, Oregon 97701

ISSUED:	DATE:
PERMIT SET / BID SET	02/14/18

JOB NUMBER:	1708
DRAWN BY:	GMA
CHECKED BY:	RLC

SHEET TITLE
ENLARGED
FLOOR PLAN
TELCOM

SHEET NUMBER
T2.1