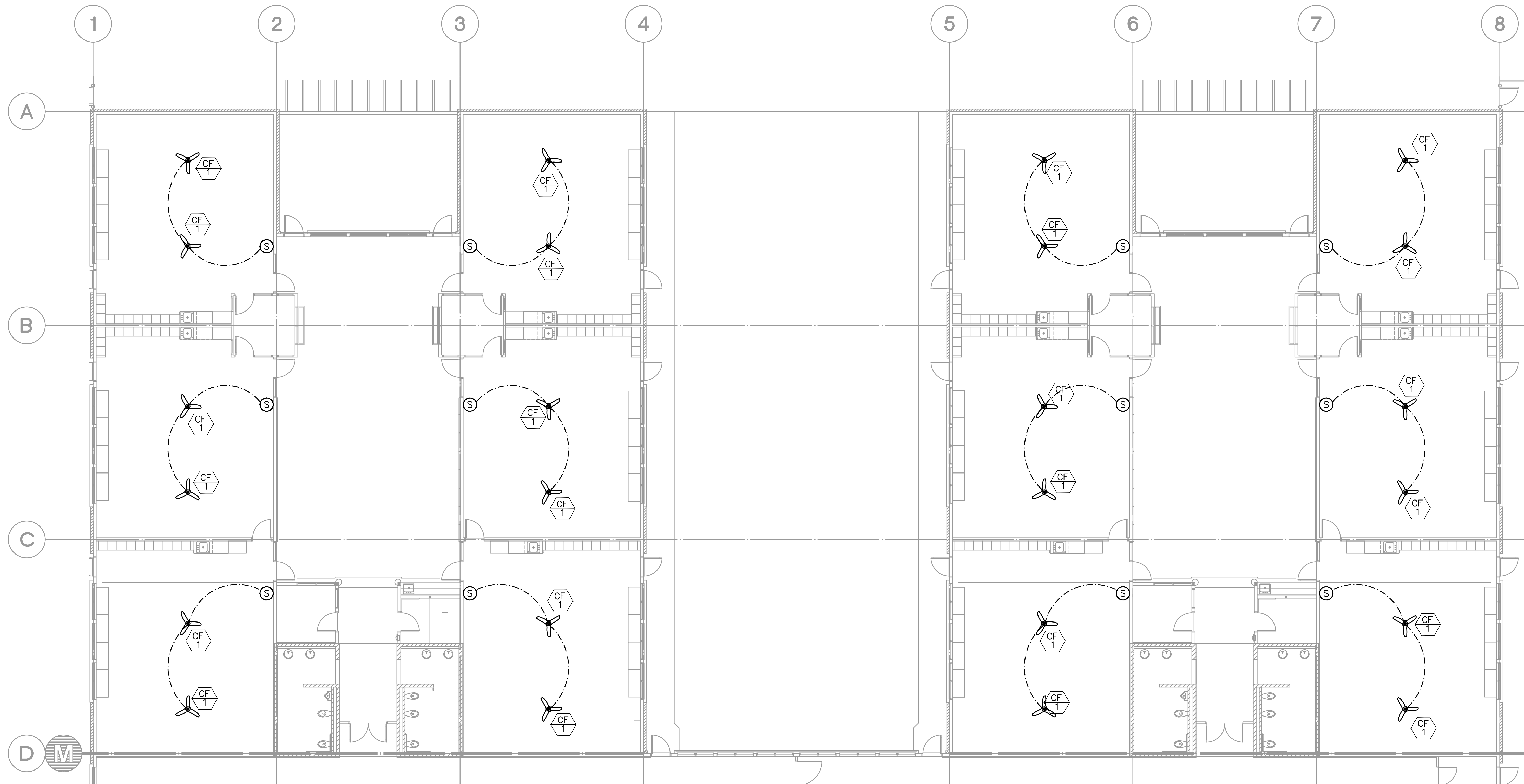


Copyright © 2017 BBT Architects
C:\Users\Brent.Lowe\OneDrive\Arch\2017\2017_02_14\2017_02_14_12:20:18.dwg, 11/13/2018, 11:35am

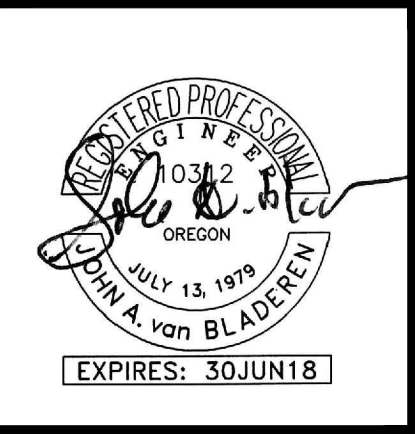


1 HVAC FLOOR PLAN- WING "A" AND "B"
M1.2 SCALE: 1/8" = 1'-0"

GENERAL NOTES:

1. SEE ARCHITECTURAL CONSTRUCTION DOCUMENTS FOR AREA OF WORK.
2. CONTRACTOR TO KEEP RECORD OF NEW SYSTEM INSTALLED AS WELL AS EXISTING TO REMAIN, AND ITEMS DISCOVERED OR ENCOUNTERED ON SITE THAT WERE NOT SHOWN ON THE PLANS. THESE INCLUDE SYSTEMS, DUCTWORK, PIPE, ETC THAT DO NOT AFFECT OR ARE NOT PART OF THE PROJECT SCOPE, BUT ARE WITHIN THE BOUNDARIES OF THE PROJECT SCOPE. CONTRACTOR IS RESPONSIBLE FOR PROVIDING AS-BUILT DRAWINGS THAT ACCURATELY REFLECT THE CONDITIONS WITHIN THE BOUNDARY OF THE PROJECT SCOPE AT THE END OF THE PROJECT.
3. COORDINATE CEILING DIFFUSER LOCATION WITH ELECTRICAL, LOW VOLTAGE AND FIRE PROTECTION DISCIPLINES.
4. SEE ELECTRICAL DRAWINGS FOR EXACT CEILING FAN (CF-X) CONTROL SWITCH LOCATIONS AND WIRING.
5. ALL SHOWN EXISTING DUCTWORK, DIFFUSERS, EQUIPMENT AND CAPACITIES ARE GATHERED FROM VARIOUS AS-BUILTS AND SHOWN FOR REFERENCE ONLY. CONTRACTOR SHALL VERIFY SIZE AND LOCATION PRIOR TO COMMENCING WORK.

MFI Consulting Engineers
2007 S.E. Ash St.
Portland, OR 97214
PHN: (503) 234-0548
FAX: (503) 234-0877
WWW.MFI-ENG.COM
CONTACT: Elena von Koments



BBT
ARCHITECTS
1160 SW Simpson Ave. - Suite 100 - Bend, Oregon 97702
t 541.389.8033

Bend-La Pine Schools SECURITY UPGRADES
Lava Ridge Elementary
20805 Cooley Road
Bend, Oregon 97701

ISSUED:	DATE:
PERMIT SET / BID SET	02/14/18

JOB NUMBER:	1708
DRAWN BY:	EVK
CHECKED BY:	JVB

SHEET TITLE
HVAC
FLOOR PLAN-
WING "A" AND "B"

SHEET NUMBER
M1.2