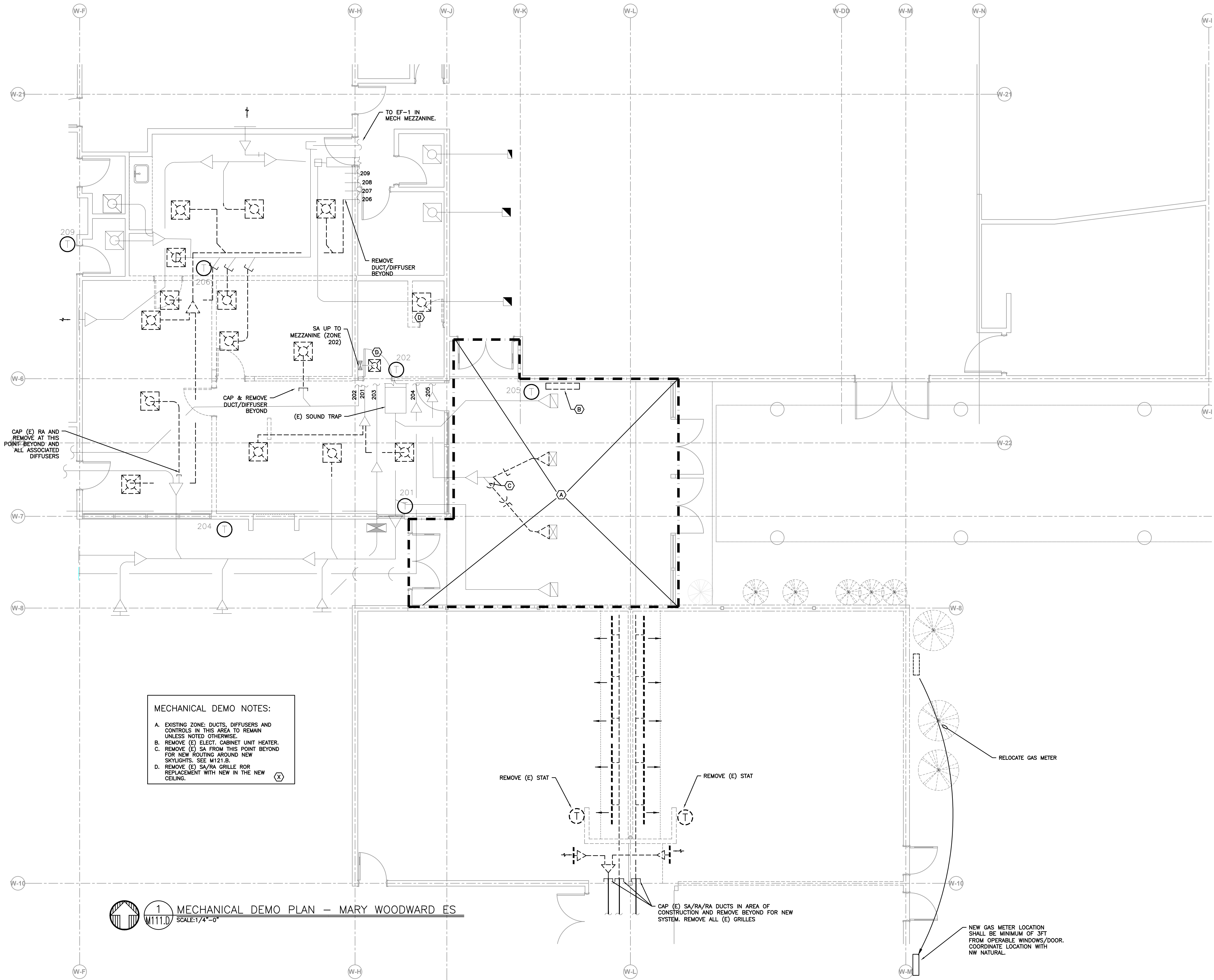


50 40 30 20 10 0

6 5 4 3 2 1



MECHANICAL DEMO NOTES:

- A. EXISTING ZONE: DUCTS, DIFFUSERS AND CONTROLS IN THIS AREA TO REMAIN UNLESS NOTED OTHERWISE.
- B. REMOVE (E) ELECT. CABINET UNIT HEATER.
- C. REMOVE (E) SA FROM THIS POINT BEYOND FOR NEW ROUTING AROUND NEW SKYLIGHTS. SEE M121.B.
- D. REMOVE (E) SA/RA GRILLE ROR REPLACEMENT WITH NEW IN THE NEW CEILING.

1 MECHANICAL DEMO PLAN — MARY WOODWARD ES
 M111.D SCALE: 1/4"=0'

BORA

Bora Architects, Inc.
 720 SW Washington, Suite 800
 Portland, Oregon 97205
 503.226.1575
 www.bora.co

ISSUED FOR INFORMATIONAL PURPOSES ONLY

NOT FOR CONSTRUCTION

Mary Woodward
 Elementary
 2115 SW Katherine
 St.
 Tigard, Oregon 97223

MAR	DATE	DESCRIPTION
K		

Issued:
 Scale:
 Drawn By:
 Reviewed By:
 File:

Copyright

MECHANICAL DEMO PLAN
 WOODWARD ES

M111.D

50 40 30 20 10 0

1/16/2017 9:45:54 AM

50 40 30 20 10 0

6

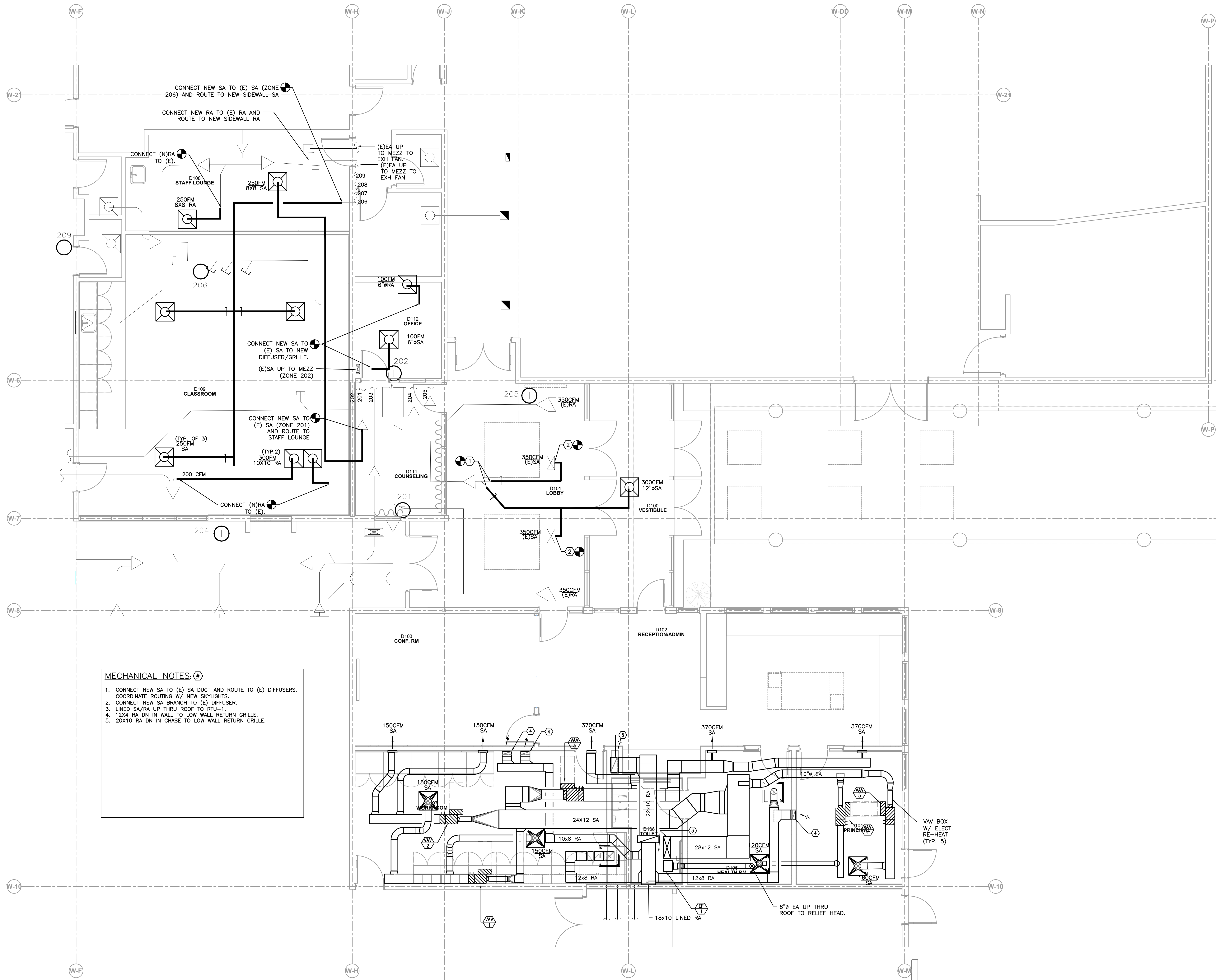
5

4

3

2

1



MECHANICAL NOTES:

1. CONNECT NEW SA TO (E) SA DUCT AND ROUTE TO (E) DIFFUSERS. COORDINATE ROUTING W/ NEW SKYLIGHTS.
2. CONNECT NEW SA BRANCH TO (E) DIFFUSER.
3. LINED SA/RA UP THRU ROOF TO RTU-1.
4. 12x4 RA DN IN WALL TO LOW WALL RETURN GRILLE.
5. 20x10 RA DN IN CHASE TO LOW WALL RETURN GRILLE.

BORA

Bora Architects, Inc.
720 SW Washington, Suite 800
Portland, Oregon 97205
503.226.1575
www.bora.co

ISSUED FOR INFORMATIONAL PURPOSES ONLY

NOT FOR CONSTRUCTION

Mary Woodward
Elementary
12115 SW Katherine
St.
Tigard, Oregon 97223

MAR	DATE	DESCRIPTION
K		

Issued:
Scale:
Drawn By:
Reviewed By:
File:

Copyright

1 MECHANICAL PLAN - MARY WOODWARD ES
M121.D SCALE: 1/4"=0'

MECHANICAL PLAN
WOODWARD ES

M121.D

50 40 30 20 10 0

1/16/2017 9:45:54 AM

50

40

30

20

10

0

6

5

4

3

2

1

6

5

4

3

2

1

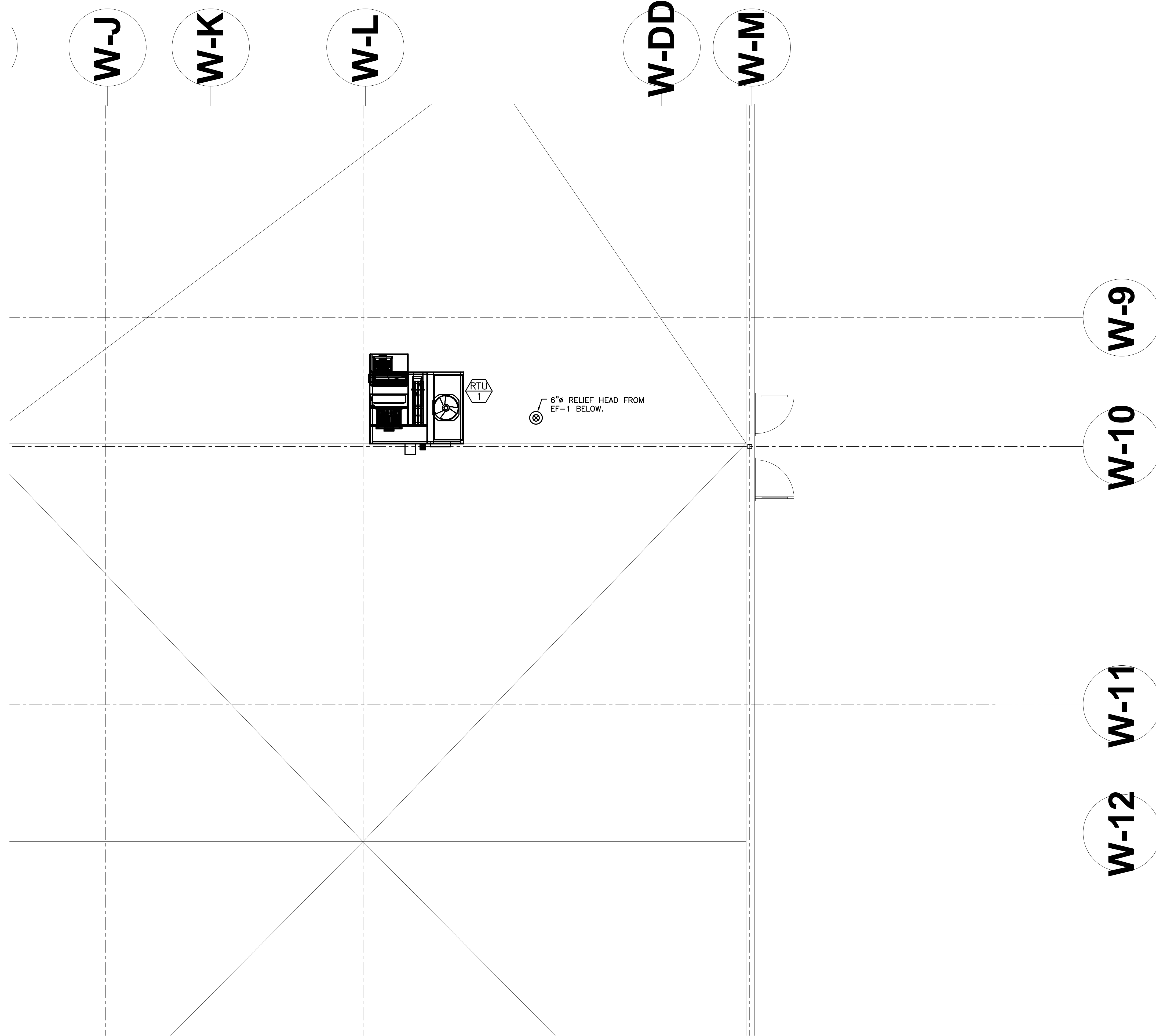
BORA

Bora Architects, Inc.
720 SW Washington, Suite 800
Portland, Oregon 97205
503.226.1575
www.bora.co

ISSUED FOR
INFORMATIONAL
PURPOSES ONLY

NOT FOR
CONSTRUCTION

Mary Woodward
Elementary
3500 SW Katherine
St.
Tigard, Oregon 97223



1 MECHANICAL ROOF PLAN - MARY WOODWARD ES
M131.D SCALE: 1/4"=0'

MAR	DATE	DESCRIPTION
K		

Issued:

Scale:

Drawn By:

Reviewed

By:

File:

Copyright

MECHANICAL ROOF PLAN
WOODWARD ES

M131.D

50

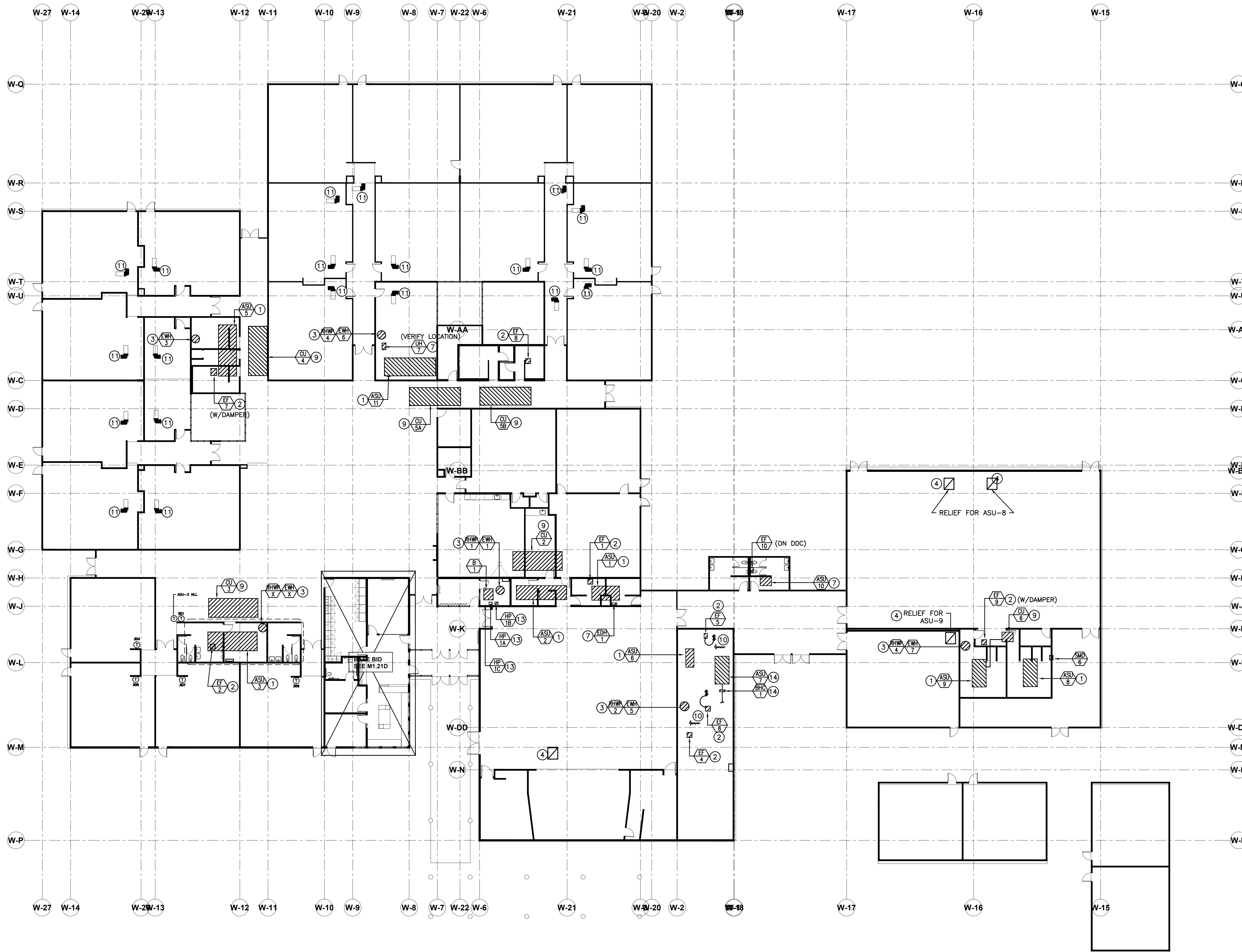
40

30

20

10

0



ISSUED FOR
 INFORMATIONAL
 PURPOSES ONLY

**NOT FOR
 CONSTRUCTION**

Mary Woodward
 Elementary
 2500 SW Katherine
 St.
 Tigard, Oregon 97223

CONTROL DRAWING KEYED NOTES – ALTERNATES:

1. PROVIDE DIGITAL DAMPER ACTUATOR AT OSA, RELIEF AND MIXING DAMPERS TO REPLACE EXISTING PNEUMATIC ACTUATORS. RETROFIT EXISTING HEATING VALVE WITH DIGITAL ACTUATOR KIT. CONFIRM VALVE CONFIGURATION PRIOR TO SUBMITTAL.
2. REMOVE PE SWITCH AND OPERATE FAN DIRECTLY FROM DIGITAL CONTROLS. PROVIDE RIB OR STARTER FOR 120V UNIT AS REQUIRED. WHERE DAMPER IS NOTED ON THE PLAN, REPLACE EXISTING PNEUMATIC ACTUATOR WITH DIGITAL DAMPER ACTUATOR.
3. REMOVE (E)PE SWITCH AND OPERATED ELECTRIC WATER HEATER AND ASSOCIATED RECIRC PUMP DIRECTLY FROM DDC.
4. PROVIDE DIGITAL DAMPER ACTUATOR. CONNECT NEW ACTUATOR TO EXISTING JCI SYSTEM CONTROL PANEL. ALTER PROGRAMMING AS REQUIRED FOR THE NEW DIGITAL DEVICE. CONFIRM DAMPER AND VALVE SIZES PRIOR TO SUBMITTAL.
5. REMOVE PE SWITCH AN OPERATE ELECTRIC HEATERS DIRECTLY FROM DIGITAL CONTROLS. PROVIDE RIB OR RATED CONTACTOR FOR 120 V OPERATION AS REQUIRED.
- 6.
7. REMOVE (E)PE SWITCH AND OPERATE FAN DIRECTLY FROM DDC. FOR HW UNIT, RETROFIT HEATING COIL VALVE WITH DIGITAL ACTUATOR KIT.
8. PROVIDE DIGITAL DAMPER ACTUATOR FOR MULTIZONE DAMPERS. # OF ZONES SHOWN ON PLAN.
9. REMOVE PE SWITCH AND OPERATE DIRECTLY FROM DIGITAL CONTROLS.
10. REMOVE (E)PNEUMATIC DAMPER ACTUATOR AT STEAM AND STOVE HOODS (EF-5 & EF-6) AND REPLACE WITH DIGITAL DAMPER ACTUATOR. ALTER PROGRAMMING AS REQUIRED FOR THE NEW DIGITAL DEVICE.
11. REMOVE (E) BY-PASS VAV BOXES AND REPLACE WITH NEW SINGLE DUCT VAV BOX WITH DDC CONTROL.
12. (E)FIRE SMOKE DAMPER – REMOVE (E)PNEUMATIC DAMPER ACTUATOR AND REPLACE WITH NEW DIGITAL ACTUATOR.
13. REMOVE (E) PE SWITCH AND OPERATE PUMP DIRECTLY FROM DIGITAL CONTROLS.
14. PROVIDE DIGITAL OSA DAMPER, FACE/BY-PASS DAMPER TO REPLACE (E)PNEUMATIC ACTUATORS. RETROFIT (E)BOOSTER HEATING COIL VALVE WITH DIGITAL ACTUATOR KIT. CONFIRM VALVE SIZING PRIOR TO SUBMITTAL.

CONTROL DRAWING GENERAL NOTES:

1. WHERE EXISTING PNEUMATIC DEVICES ARE REMOVED, REMOVE ALL ASSOCIATED PNEUMATIC PIPING AND CONTROLS. CONNECT NEW ACTUATOR / DDC DEVICES TO EXISTING JCI SYSTEM CONTROL PANEL. ALTER PROGRAMMING AS REQUIRED FOR THE NEW DIGITAL DEVICE. CONFIRM DAMPER AND VALVE SIZES PRIOR TO SUBMITTAL.

1 ALTERNATES
 M200D SCALE: 1/4"=0'

MAR	DATE	DESCRIPTION
K		

Issued:
 Scale:
 Drawn By:
 Reviewed By:
 File:

Copyright

OVERALL MECHANICAL
 PLAN - ALTERNATES

M200.D

6

5

4

3

2

1

BORA

Bora Architects, Inc.
720 SW Washington, Suite 800
Portland, Oregon 97205
503.226.1575
www.bora.co

ISSUED FOR INFORMATIONAL PURPOSES ONLY
NOT FOR CONSTRUCTION

Mary Woodward
Elementary
2400 SW Katherine
St.
Tigard, Oregon 97223

MAR DATE DESCRIPTION
K

Issued:
Scale:
Drawn By:
Reviewed By:
File:

Copyright

MECHANICAL LEGENDS AND SCHEDULES

M600.D

MECHANICAL LEGEND

	SUPPLY AIR DIFFUSER	AFF	ABOVE FINISH FLOOR
	RETURN AIR GRILLE	AHU	AIR HANDLING UNIT
	EXHAUST AIR GRILLE	B.D.	BOTTOM OF DUCT
	PERFORATED RETURN AIR PANEL	BHP	BRAKE HORSEPOWER
	DIRECTIONAL AIR FLOW	BTU	BRITISH THERMAL UNITS
	MANUAL VOLUME DAMPER	CFM	CUBIC FEET PER MINUTE
	SUPPLY OR OUTSIDE AIR DUCT UP & DOWN	CONN.	CONNECTION
	RETURN AIR DUCT UP & DOWN	CONT.	CONTINUATION
	EXHAUST AIR DUCT UP & DOWN	CW	DOMESTIC COLD WATER
	SUPPLY OR OUTSIDE AIR DUCT UP & DOWN	DB	DRY BULB
	RETURN AIR DUCT UP & DOWN	DIA.	DIAMETER
	EXHAUST AIR DUCT UP & DOWN	DIST.	DISTRIBUTION
	SUPPLY OR OUTSIDE AIR DUCT UP & DOWN	EA	EXHAUST AIR
	RETURN AIR DUCT UP & DOWN	EDB	ENTERING DRY BULB TEMPERATURE
	EXHAUST AIR DUCT UP & DOWN	EWB	ENTERING WET BULB TEMPERATURE
	SUPPLY OR OUTSIDE AIR DUCT UP & DOWN	EWT	ENTERING WATER TEMPERATURE
	RETURN AIR DUCT UP & DOWN	FF	FINISH FLOOR
	EXHAUST AIR DUCT UP & DOWN	FIXT.	FIXTURE
	SUPPLY OR OUTSIDE AIR DUCT UP & DOWN	FPM	FEET PER MINUTE
	RETURN AIR DUCT UP & DOWN	FPS	FEET PER SECOND
	EXHAUST AIR DUCT UP & DOWN	FT.	FEET / FOOT
	VAV TERMINAL UNIT	GA.	GAUGE
	VAV TERMINAL UNIT	GPM	GALLONS PER MINUTE
	EXISTING	H	HEIGHT
	CONNECT TO EXISTING	HP	HORSEPOWER
	THERMOSTAT OR TEMP. SENSOR	I.D.	INSIDE DIAMETER
	NOTE	IN.	INCHES
	EQUIPMENT DESIGNATOR	L	LENGTH
	BALL VALVE	LBS.	POUNDS
	GATE VALVE	LDB	LEAVING DRY BULB
	CHECK VALVE	LWB	LEAVING WET BULB
	BALANCING VALVE	LWT	LEAVING WATER TEMPERATURE
	THERMOMETER	MAX.	MAXIMUM
	DIRECTION OF FLOW	MBH	THOUSANDS OF BTUs PER HOUR
	PUMP	MIN.	MINIMUM
	STRAINER	NC	NOISE CRITERIA
	PRESSURE GAUGE	N.C.	NORMALLY CLOSED
	PETE'S PLUG	N.I.M.	NOT IN MECHANICAL
	DOUBLE CHECK ASSEMBLY	NO.	NUMBER
	PRESSURE REDUCING VALVE	N.O.	NORMALLY OPEN
	UNION	O.A.	OUTSIDE AIR
	2-WAY CONTROL VALVE	P	PERSON
	3-WAY CONTROL VALVE	PSI	POUNDS PER SQUARE INCH
	CAP	P/T	PRESSURE / TEMPERATURE
	SMOKE DETECTOR	R.A.	RETURN AIR
	MOTORIZED DAMPER	RECT.	RECTANGULAR
		REQ'D	REQUIRED
		S.A.	SUPPLY AIR
		S.P.	STATIC PRESSURE
		SO.	SQUARE
		TEMP.	TEMPERATURE
		TYP.	TYPICAL
		VAV	VARIABLE AIR VOLUME
		W	WIDTH
		WB	WET BULB
		WPD	WATER PRESSURE DROP
		Ø	DIAMETER
			(E) EXISTING
			(D) DEMOLISH
			NEW WORK
			HWS (HWS) HEATING WATER SUPPLY
			HWR (HWR) HEATING WATER RETURN
			FIRE DAMPER
			FIRE / SMOKE DAMPER
			SMOKE DAMPER
			SEISMIC BRACING
			LATERAL BRACING
			LONGITUDINAL BRACING
			LONGITUDINAL & LATERAL BRACING

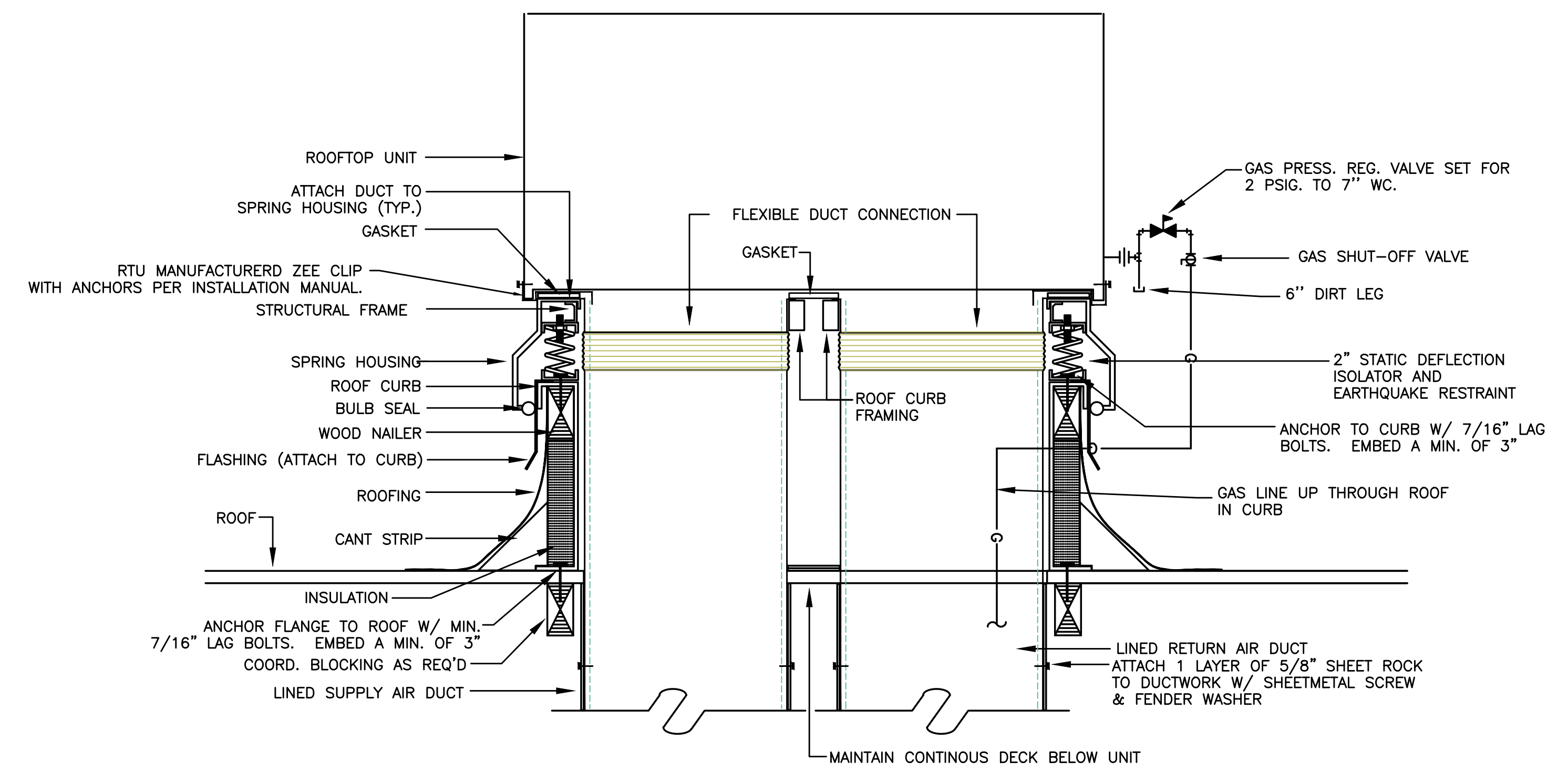
ROOFTOP HVAC UNITS

MARK NUMBER	RTU 1
SYSTEM	ADMIN
TYPE	VAV
DISCHARGE	VERTICAL
TOTAL CFM	2000
ECONOMIZER	YES
MIN. OSA	-
MAX OSA (FULL OCCUPANCY)	-
CO2 CONTROL	YES
EXTERNAL SP. ("H2O)	1.25"
MOTOR HP.	4 HP/NOTE 1
TOTAL CFM	2000
EXTERNAL SP ("H2)	0.50"
FAN POWER	1.3 HP/NOTE 1
HEATING	
GAS INPUT(MBH)	120MBH
EFF. (AFUE)	80.0%
MODULATING/TURN DOWN:	5:1
COOLING	
TOTAL CLG. (TONS)	5
SENSIBLE CLG. (MBH)	
ENT. EVAP AIR TEMP (DB/WB.)	
AMBIENT AIR (°F)	
EER/SEER	18 SEER
REFRIGERANT	410A
DESIGN WEIGHT (LBS.)	1500 #
SMOKE DETECTOR (RETURN DUCT)	NO
SPRING ISOLATION ROOF CURB	YES
CONVENIENCE OUTLET - ALWAYS POWERED	YES
BASIS OF DESIGN - DAIKIN	DPS 005A

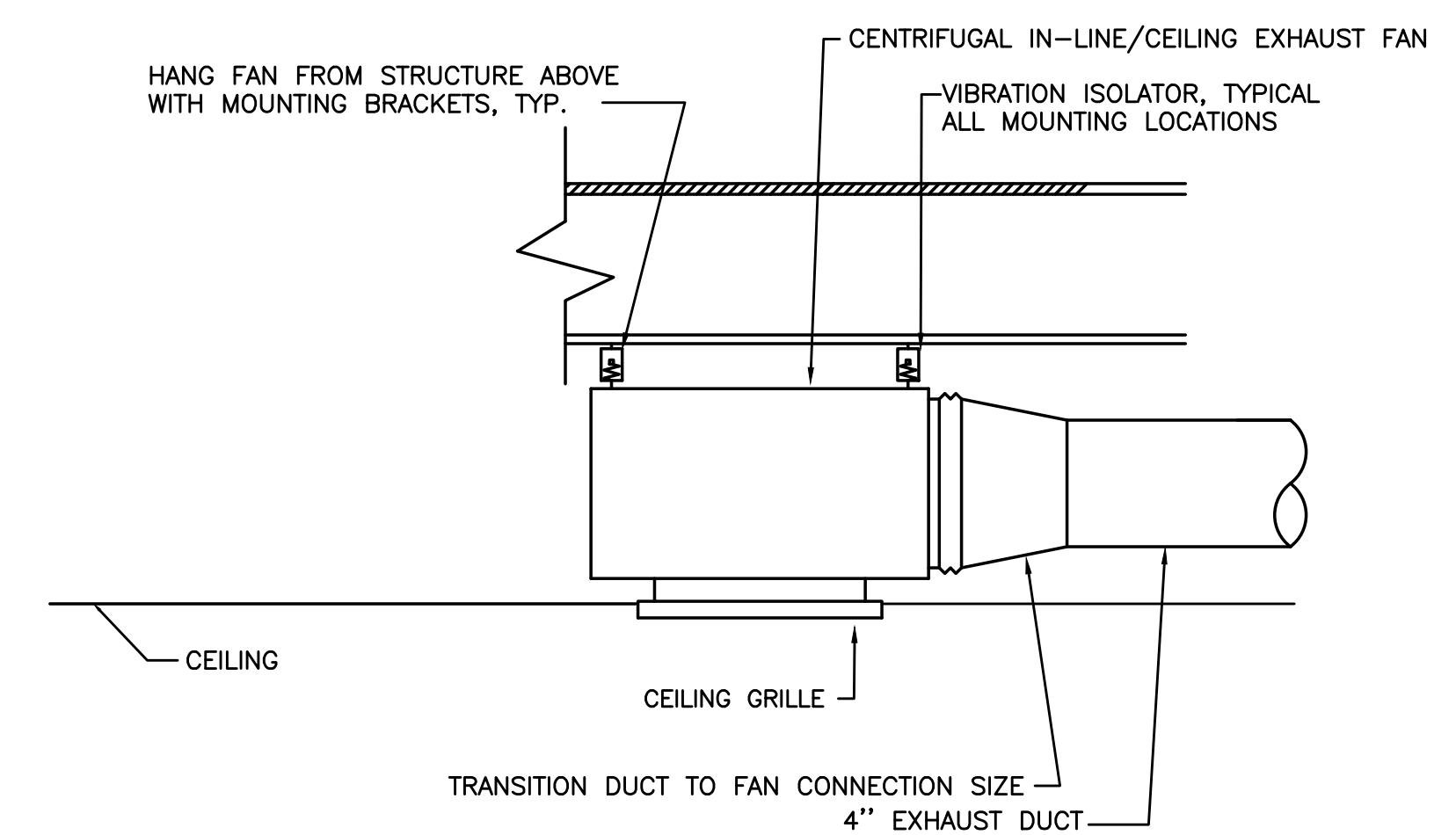
EXHAUST FANS

MARK NUMBER	EF 1
NOTE 1	CEILING
SYSTEM	RESTROOM
CFM	100
TOTAL SP. (IN H2O)	.30"
RPM	720
MOTOR HP	128 W
CONTROLLED BY	SWITCH
INTERLOCKED WITH	-
DAMPER TYPE	BDD
ISOLATION	RIS
DESIGN WEIGHT (LBS)	10
MAX. SONES	1.6
ELECTRICAL (V/Ø) (POWER)	115/1
BASIS OF DESIGN	GREENHECK SF-B150

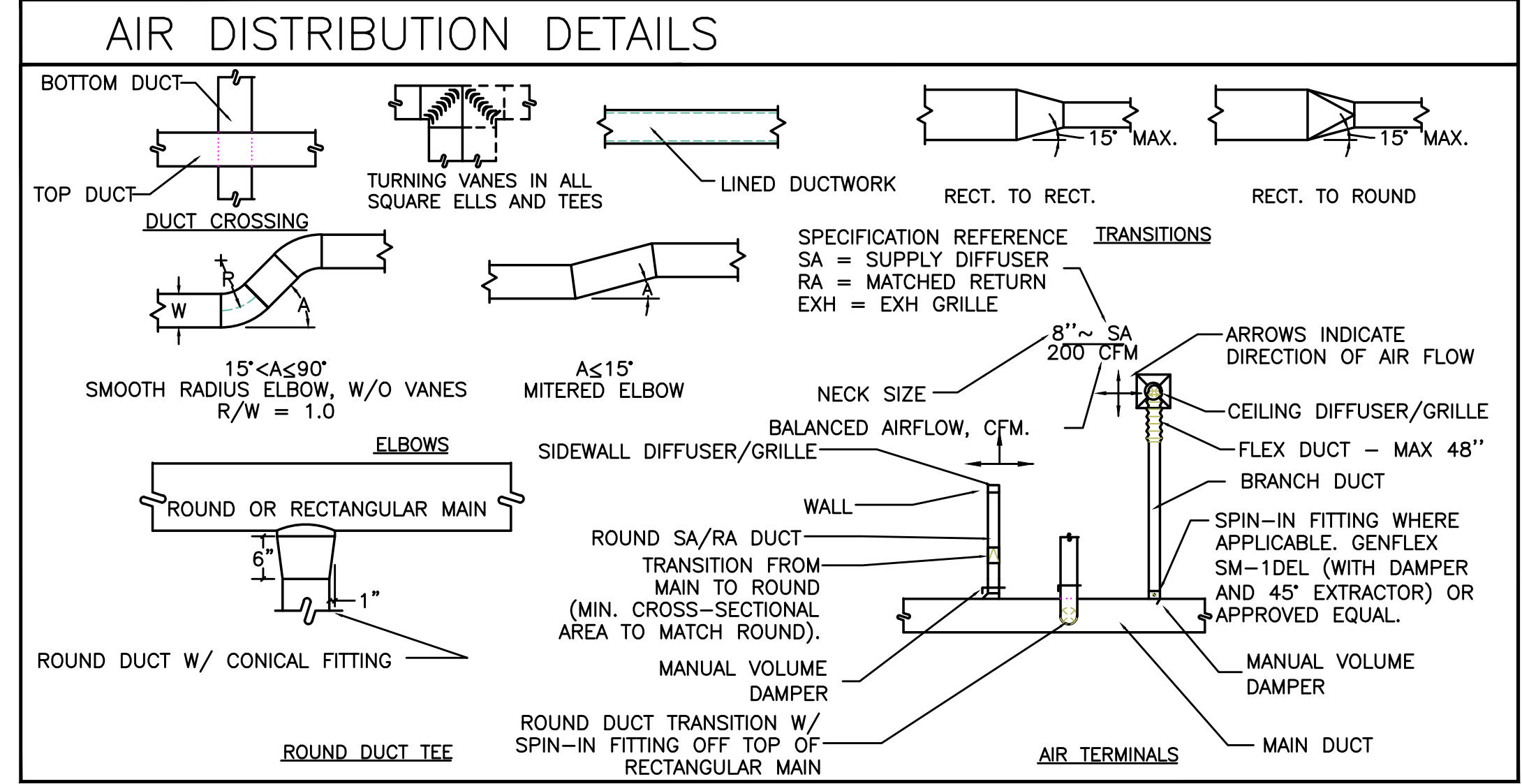
1. PROVIDE WITH SPEED CONTROL NEAR FAN FOR BALANCING



1 RTU INSTALLATION DETAIL
SCALE:DETAIL



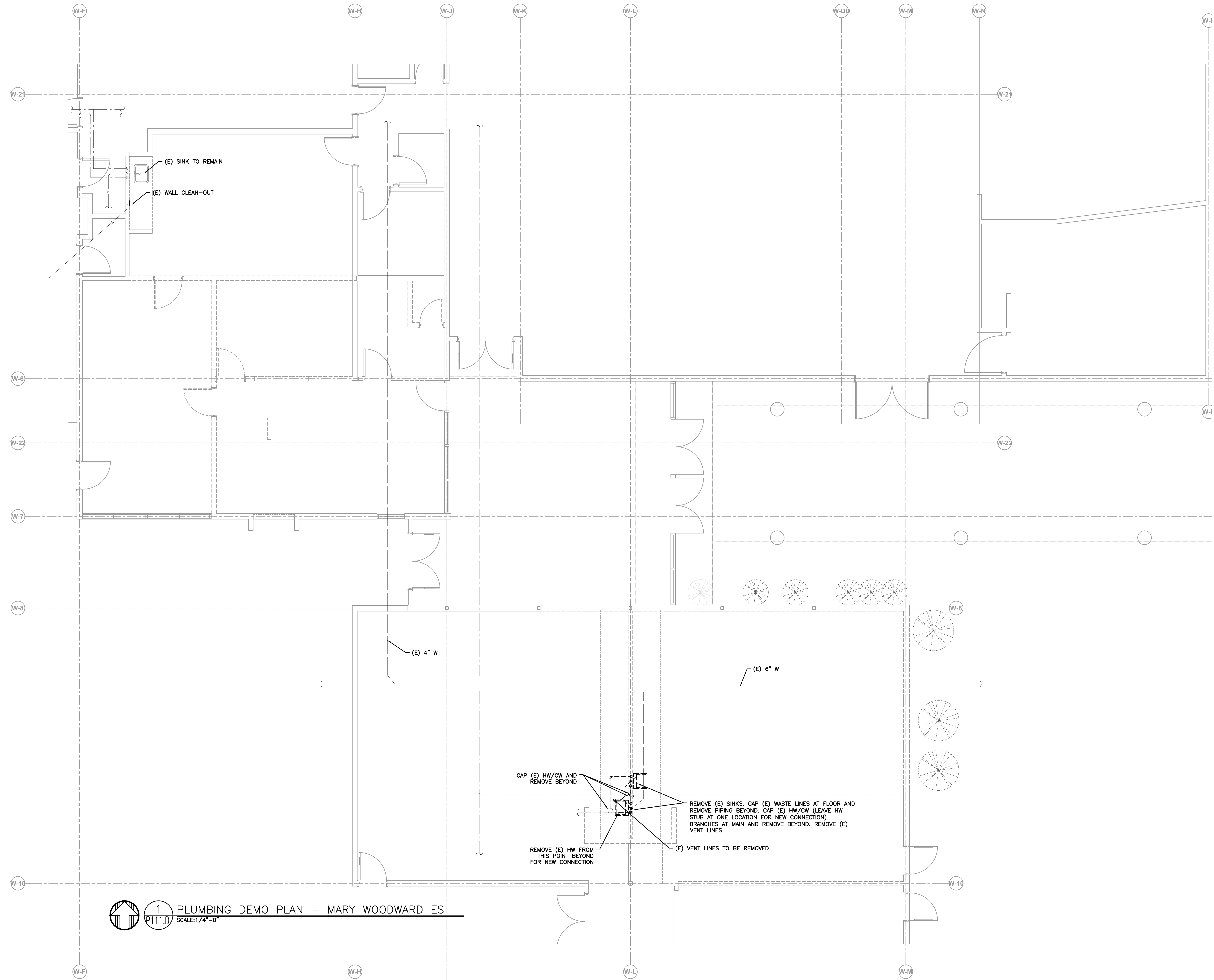
2 RESTROOM EXHAUST FAN
SCALE:DETAIL



1/16/2017 9:45:54 AM

50 40 30 20 10 0

6
5
4
3
2
1




1 PLUMBING DEMO PLAN — MARY WOODWARD ES
 P111.D SCALE: 1/4"=0'

BORA

Bora Architects, Inc.
 720 SW Washington, Suite 800
 Portland, Oregon 97205
 503.226.1575
 www.bora.co

**ISSUED FOR
 INFORMATIONAL
 PURPOSES ONLY**
**NOT FOR
 CONSTRUCTION**

Mary Woodward
 Elementary
 2001 SW Katherine
 St.
 Tigard, Oregon 97223

MAR	DATE	DESCRIPTION
K		

Issued:
 Scale:
 Drawn By:
 Reviewed By:
 File:
 Copyright

PLUMBING DEMO PLAN
 WOODWARD ES

P111.D

50 40 30 20 10 0

50 40 30 20 10 0

6

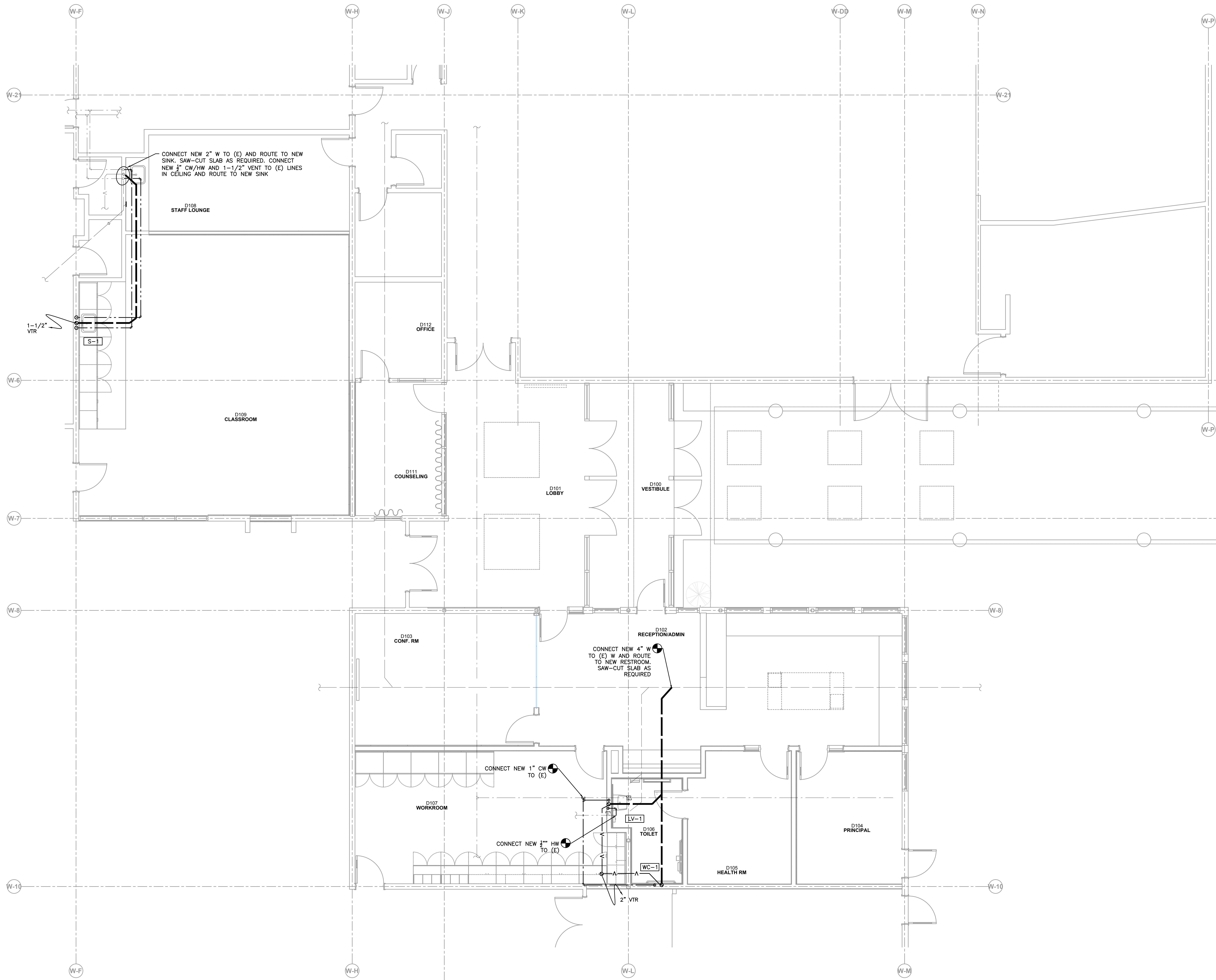
5

4

3

2

1



BORA

Bora Architects, Inc.
 720 SW Washington, Suite 800
 Portland, Oregon 97205
 503.226.1575
 www.bora.co

ISSUED FOR
 INFORMATIONAL
 PURPOSES ONLY

NOT FOR
 CONSTRUCTION

Mary Woodward
 Elementary
 1234 SW Katherine
 St.
 Tigard, Oregon 97223

MAR	DATE	DESCRIPTION
K		

Issued:
 Scale:
 Drawn By:
 Reviewed By:
 File:

Copyright

PLUMBING PLAN
 WOODWARD ES

P121.D

1 PLUMBING PLAN - MARY WOODWARD ES
 P121.D SCALE: 1/4"=0'

1/16/2017 9:45:54
 AM

50 40 30 20 10 0



ISSUED FOR
 INFORMATIONAL
 PURPOSES ONLY

NOT FOR
 CONSTRUCTION

Mary Woodward
 Elementary
 2323 SW Katherine
 St.
 Tigard, Oregon 97223

MAR	DATE	DESCRIPTION
K		

Issued:

Scale:

Drawn By:

Reviewed

By:

File:

Copyright