

50

40

30

20

10

0

6

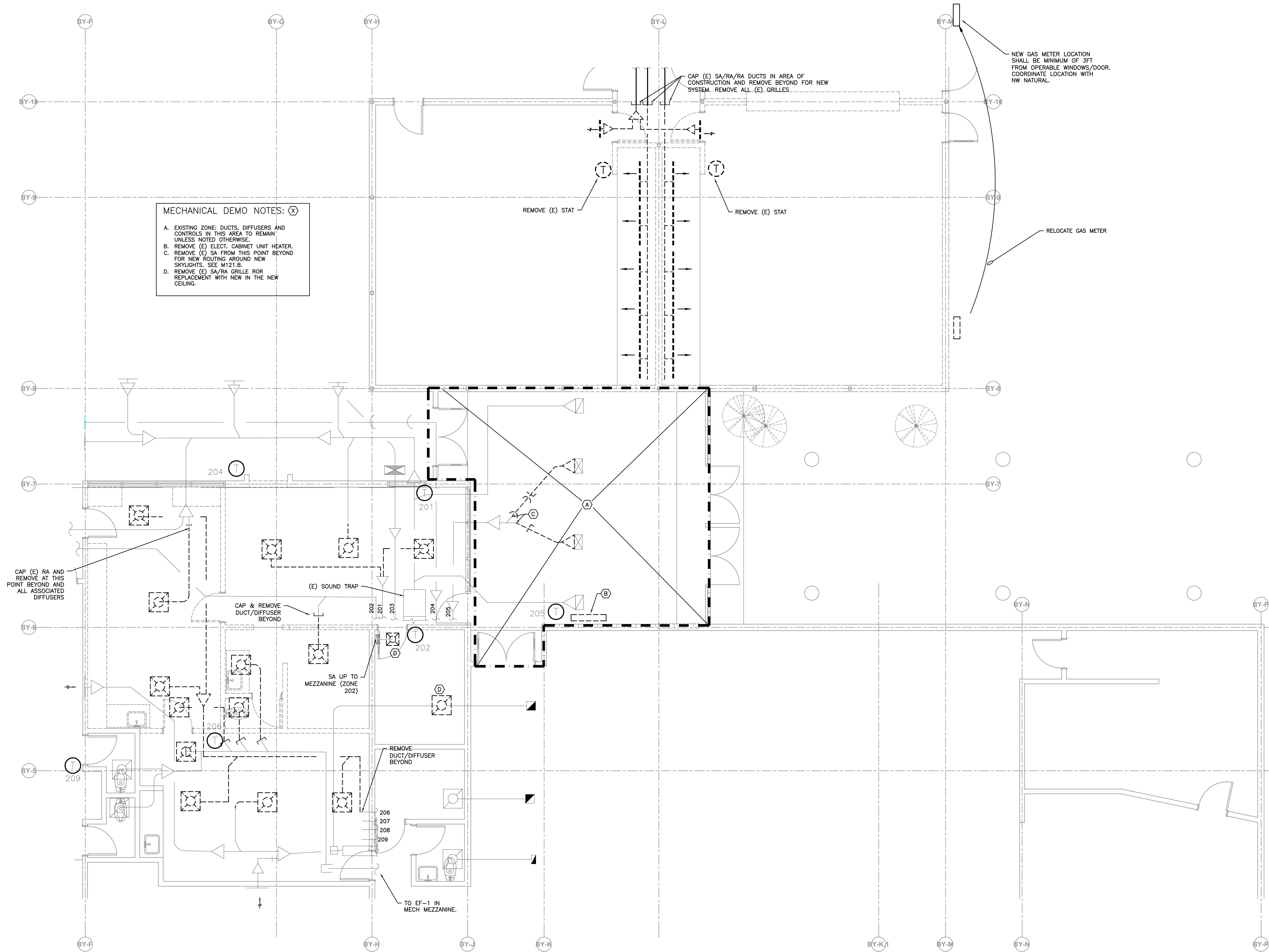
5

4

3

2

1



MECHANICAL DEMO NOTES: (X)

A. EXISTING ZONE, DUCTS, DIFFUSERS AND CONTROLS IN THIS AREA TO REMAIN UNLESS NOTED OTHERWISE.
 B. REMOVE (E) ELECT. CABINET UNIT HEATER.
 C. REMOVE (E) SA FROM THIS POINT BEYOND FOR NEW ROUTING AROUND NEW SKYLIGHTS. SEE M121.B.
 D. REMOVE (E) SA/RA GRILLE FOR REPLACEMENT WITH NEW IN THE NEW CEILING.

NEW GAS METER LOCATION SHALL BE MINIMUM OF 3FT FROM OPERABLE WINDOWS/DOOR. COORDINATE LOCATION WITH NW NATURAL.

RELOCATE GAS METER

REMOVE (E) STAT

REMOVE (E) STAT

CAP (E) SA/RA/RA DUCTS IN AREA OF CONSTRUCTION AND REMOVE BEYOND FOR NEW SYSTEM. REMOVE ALL (E) GRILLES.

CAP (E) RA AND REMOVE AT THIS POINT BEYOND AND ALL ASSOCIATED DIFFUSERS

CAP & REMOVE DUCT/DIFFUSER BEYOND

SA UP TO MEZZANINE (ZONE 202)

REMOVE DUCT/DIFFUSER BEYOND

TO EF-1 IN MECH MEZZANINE.

BORA

Bora Architects, Inc.
 720 SW Washington, Suite 800
 Portland, Oregon 97205
 503.226.1575
 www.bora.co

ISSUED FOR INFORMATIONAL PURPOSES ONLY
 NOT FOR CONSTRUCTION

Edward Byrom Elementary School
 21800 S.W. 91st Ave
 Tualatin, Oregon 97062

MAR	DATE	DESCRIPTION
K		

Issued:
 Scale:
 Drawn By:
 Reviewed By:
 File:

Copyright

1 MECHANICAL DEMO PLAN -- BYROM ES
 M111.B SCALE:1/4"=0'

MECHANICAL DEMO PLAN
 BYROM ES

M111.B

50

40

30

20

10

0

ISSUED FOR
INFORMATIONAL
PURPOSES ONLY
**NOT FOR
CONSTRUCTION**

Edward Byrom
Elementary School
21800 S.W. 91st Ave
Tualatin, Oregon 97062

MAR	DATE	DESCRIPTION
K		

Issued:
Scale:
Drawn By:
Reviewed
By:
File:

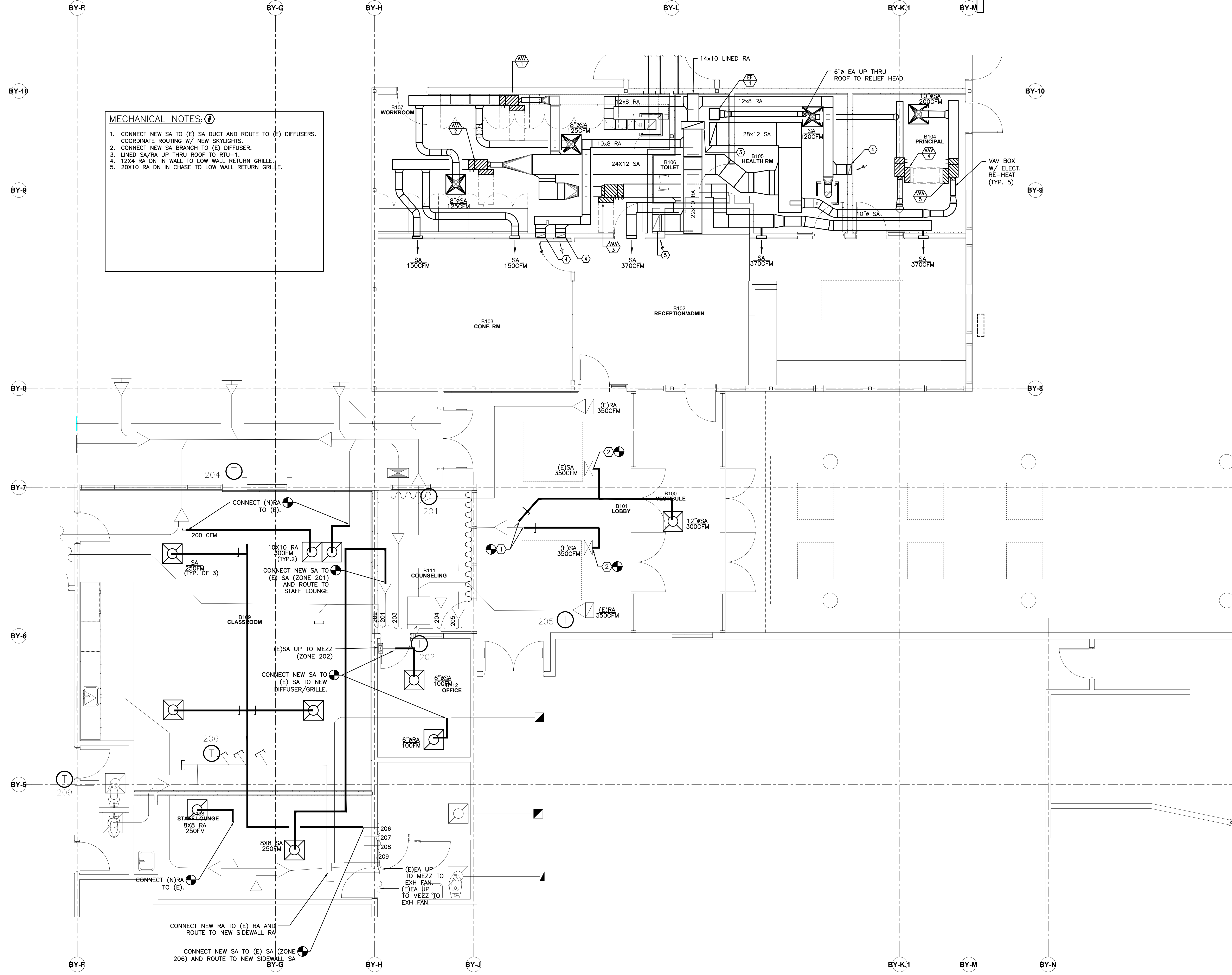
Copyright

MECHANICAL PLAN
BYROM ES

M121.B

MECHANICAL NOTES:

1. CONNECT NEW SA TO (E) SA DUCT AND ROUTE TO (E) DIFFUSERS. COORDINATE ROUTING W/ NEW SKYLIGHTS.
2. CONNECT NEW SA BRANCH TO (E) DIFFUSER.
3. LINED SA/RA UP THRU ROOF TO RTU-1.
4. 12x4 RA DN IN WALL TO LOW WALL RETURN GRILLE.
5. 20x10 RA DN IN CHASE TO LOW WALL RETURN GRILLE.



1 MECHANICAL PLAN - BYROM ES
M121.B SCALE: 1/4"=0'

1/16/2017 9:45:54 AM

50

40

30

20

10

0

6

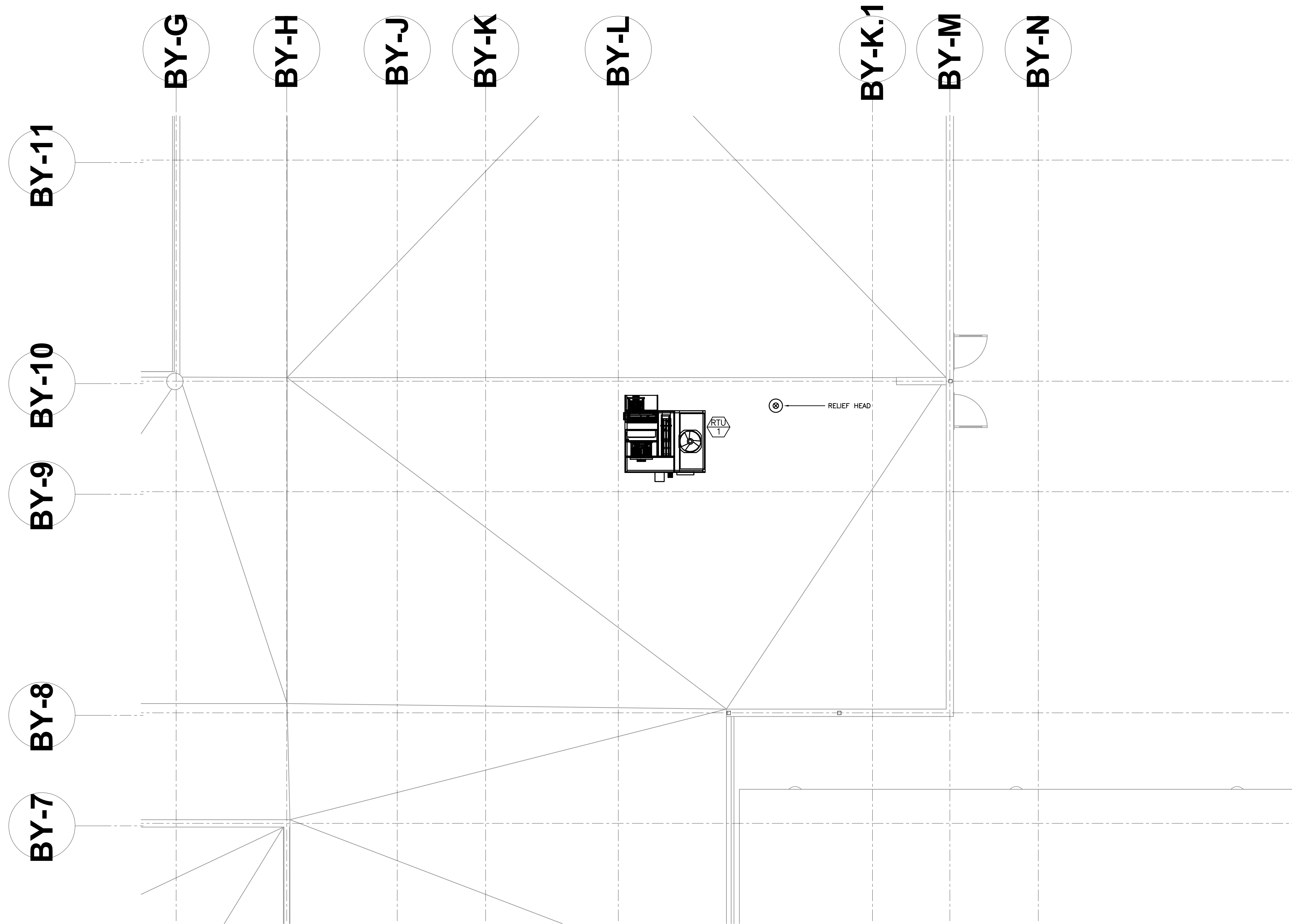
5

4

3

2

1



BORA

Bora Architects, Inc.
 720 SW Washington, Suite 800
 Portland, Oregon 97205
 503.226.1575
 www.bora.co

ISSUED FOR
 INFORMATIONAL
 PURPOSES ONLY

NOT FOR
 CONSTRUCTION

Edward Byrom
 Elementary School
 21800 S.W. 91st Ave
 Tualatin, Oregon 97062

1 MECHANICAL ROOF PLAN -- BYROM ES
 W131.B SCALE:1/4"=0"

MAR	DATE	DESCRIPTION
K		

Issued:
 Scale:
 Drawn By:
 Reviewed
 By:
 File:

Copyright

MECHANICAL ROOF PLAN
 BYROM ES

M131.B

50

40

30

20

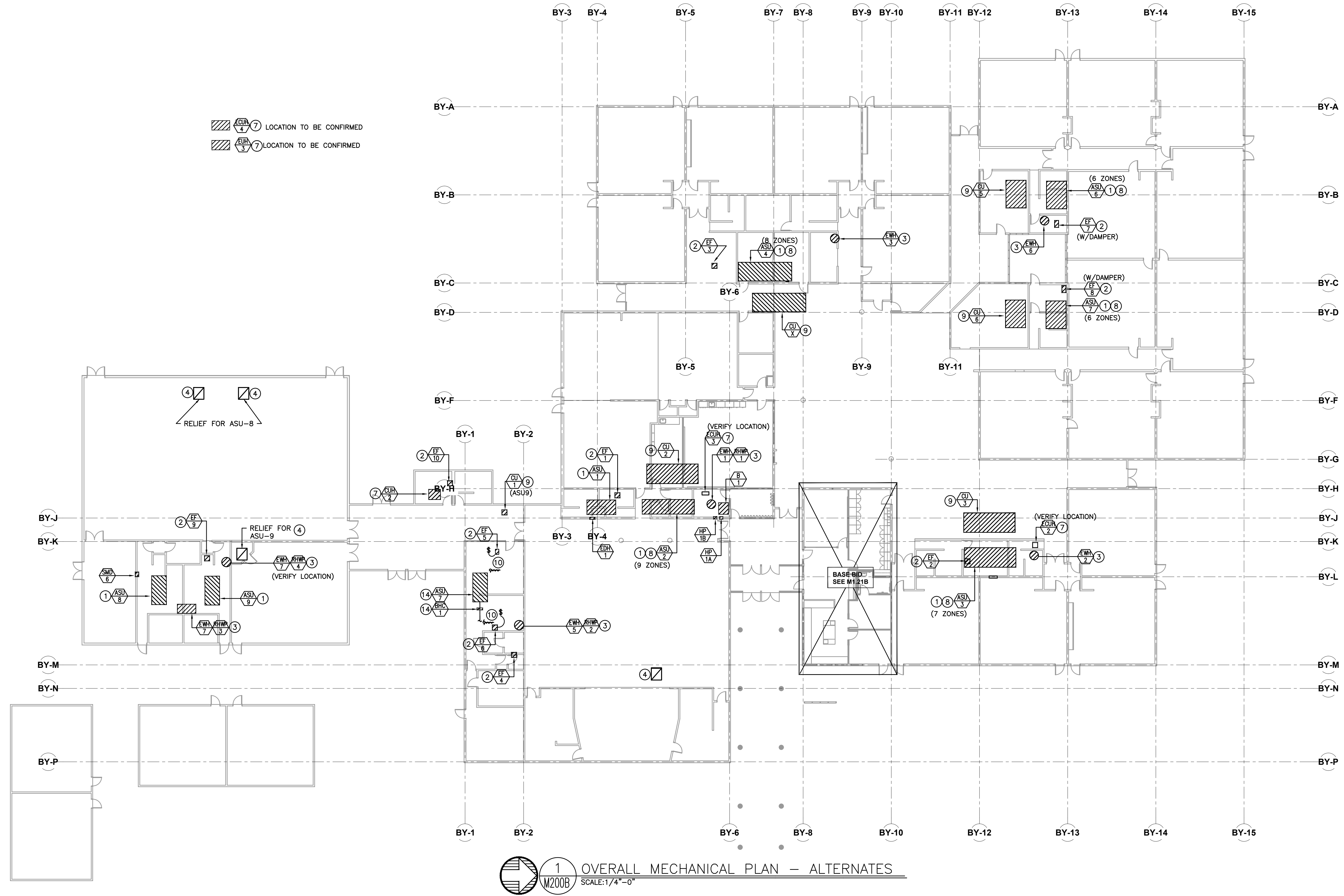
10

0

ISSUED FOR
INFORMATIONAL
PURPOSES ONLY

NOT FOR
CONSTRUCTION

Edward Byrom
Elementary School
21800 S.W. 91st Ave
Tualatin, Oregon 97062



6

5

4

3

2

1

BORA

Bora Architects, Inc.
720 SW Washington, Suite 800
Portland, Oregon 97205
503.226.1575
www.bora.co

ISSUED FOR INFORMATIONAL PURPOSES ONLY
NOT FOR CONSTRUCTION

Edward Byrom
Elementary School
21800 S.W. 91st Ave
Tualatin, Oregon 97062

MAR DATE DESCRIPTION
K

Issued:
Scale:
Drawn By:
Reviewed By:
File:

Copyright

MECHANICAL LEGENDS AND SCHEDULES

M600.B

MECHANICAL LEGEND

	SUPPLY AIR DIFFUSER	AFF	ABOVE FINISH FLOOR
	RETURN AIR GRILLE	AHU	AIR HANDLING UNIT
	EXHAUST AIR GRILLE	B.D.	BOTTOM OF DUCT
	PERFORATED RETURN AIR PANEL	BHP	BRAKE HORSEPOWER
	DIRECTIONAL AIR FLOW	BTU	BRITISH THERMAL UNITS
	MANUAL VOLUME DAMPER	CFM	CUBIC FEET PER MINUTE
	SUPPLY OR OUTSIDE AIR DUCT UP & DOWN	CONN.	CONNECTION
	RETURN AIR DUCT UP & DOWN	CONT.	CONTINUATION
	EXHAUST AIR DUCT UP & DOWN	CW	DOMESTIC COLD WATER
	SUPPLY OR OUTSIDE AIR DUCT UP & DOWN	DB	DRY BULB
	RETURN AIR DUCT UP & DOWN	DIA.	DIAMETER
	EXHAUST AIR DUCT UP & DOWN	DIST.	DISTRIBUTION
	SUPPLY OR OUTSIDE AIR DUCT UP & DOWN	EA	EXHAUST AIR
	RETURN AIR DUCT UP & DOWN	EDB	ENTERING DRY BULB TEMPERATURE
	EXHAUST AIR DUCT UP & DOWN	EWB	ENTERING WET BULB TEMPERATURE
	SUPPLY OR OUTSIDE AIR DUCT UP & DOWN	EWT	ENTERING WATER TEMPERATURE
	RETURN AIR DUCT UP & DOWN	FF	FINISH FLOOR
	EXHAUST AIR DUCT UP & DOWN	FIXT.	FIXTURE
	SUPPLY OR OUTSIDE AIR DUCT UP & DOWN	FPM	FEET PER MINUTE
	RETURN AIR DUCT UP & DOWN	FPS	FEET PER SECOND
	EXHAUST AIR DUCT UP & DOWN	FT.	FEET / FOOT
	VAV TERMINAL UNIT	GA.	GAUGE
	VAV TERMINAL UNIT	GPM	GALLONS PER MINUTE
	EXISTING	H	HEIGHT
	CONNECT TO EXISTING	HP	HORSEPOWER
	THERMOSTAT OR TEMP. SENSOR	I.D.	INSIDE DIAMETER
	NOTE	IN.	INCHES
	EQUIPMENT DESIGNATOR	L	LENGTH
	BALL VALVE	LBS.	POUNDS
	GATE VALVE	LDB	LEAVING DRY BULB
	CHECK VALVE	LWB	LEAVING WET BULB
	BALANCING VALVE	LWT	LEAVING WATER TEMPERATURE
	THERMOMETER	MAX.	MAXIMUM
	DIRECTION OF FLOW	MBH	THOUSANDS OF BTUs PER HOUR
	PUMP	MIN.	MINIMUM
	STRAINER	NC	NOISE CRITERIA
	PRESSURE GAUGE	N.C.	NORMALLY CLOSED
	PETE'S PLUG	N.I.M.	NOT IN MECHANICAL
	DOUBLE CHECK ASSEMBLY	NO.	NUMBER
	PRESSURE REDUCING VALVE	N.O.	NORMALLY OPEN
	UNION	O.A.	OUTSIDE AIR
	2-WAY CONTROL VALVE	P	PERSON
	3-WAY CONTROL VALVE	PSI	POUNDS PER SQUARE INCH
	CAP	P/T	PRESSURE / TEMPERATURE
	SMOKE DETECTOR	R.A.	RETURN AIR
	MOTORIZED DAMPER	RECT.	RECTANGULAR
		REQ'D	REQUIRED
		S.A.	SUPPLY AIR
		S.P.	STATIC PRESSURE
		SO.	SQUARE
		TEMP.	TEMPERATURE
		TYP.	TYPICAL
		VAV	VARIABLE AIR VOLUME
		W	WIDTH
		WB	WET BULB
		WPD	WATER PRESSURE DROP
		Ø	DIAMETER
			(E) EXISTING
			(D) DEMOLISH
			NEW WORK
			HWS (HWS HEATING WATER SUPPLY)
			HWR (HWR HEATING WATER RETURN)
			FIRE DAMPER
			FIRE / SMOKE DAMPER
			SMOKE DAMPER
			SEISMIC BRACING
			LATERAL BRACING
			LONGITUDINAL BRACING
			LONGITUDINAL & LATERAL BRACING

ROOFTOP HVAC UNITS

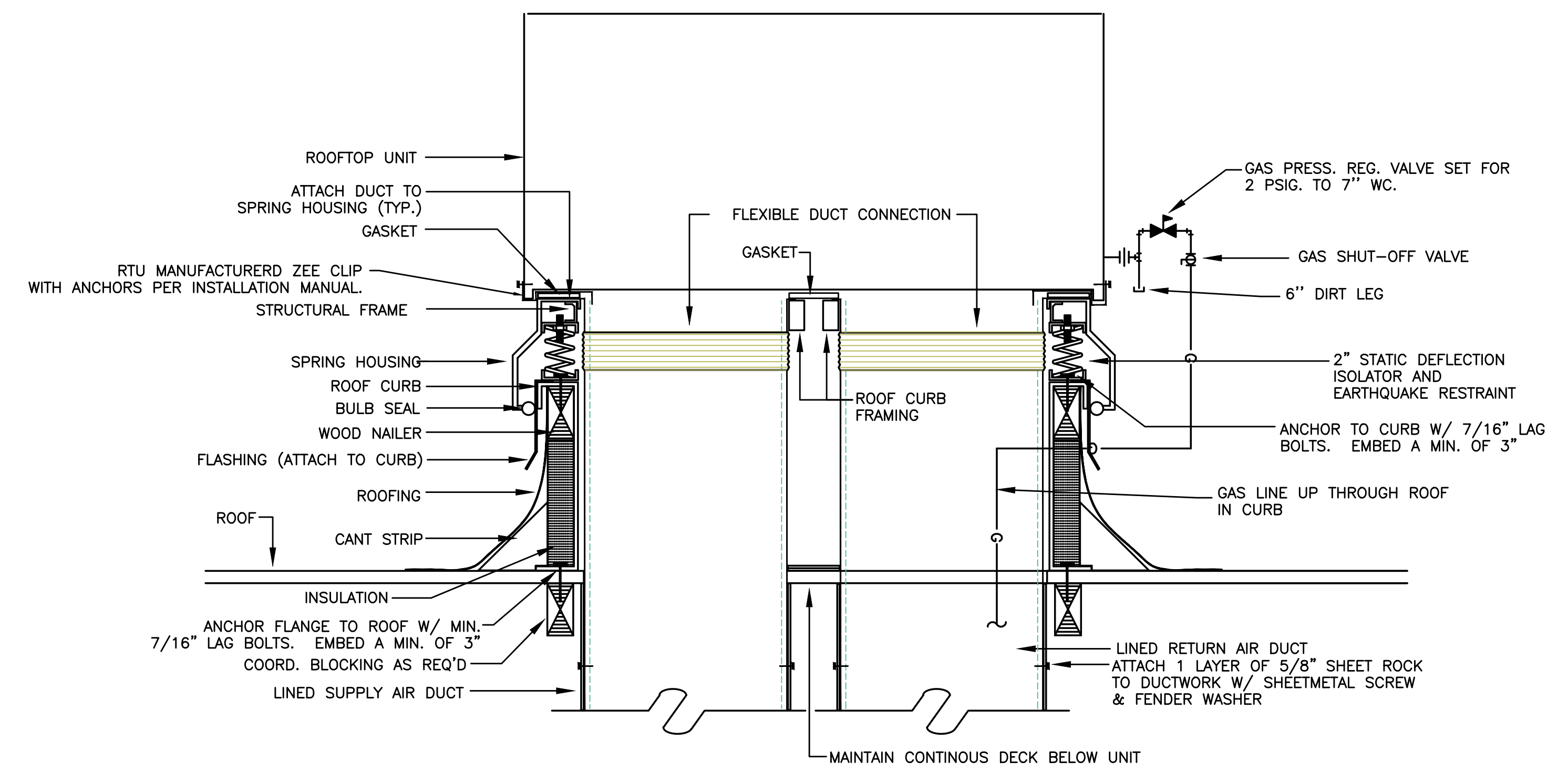
MARK NUMBER	RTU 1
SYSTEM	ADMIN
TYPE	VAV
DISCHARGE	VERTICAL
TOTAL CFM	2000
ECONOMIZER	YES
MIN. OSA	-
MAX OSA (FULL OCCUPANCY)	-
CO2 CONTROL	YES
EXTERNAL SP. ("H2O)	1.25"
MOTOR HP.	4 HP/NOTE 1
TOTAL CFM	2000
EXTERNAL SP ("H2)	0.50"
FAN POWER	1.3 HP/NOTE 1
HEATING	
GAS INPUT(MBH)	120MBH
EFF. (AFUE)	80.0%
MODULATING/TURN DOWN:	5:1
COOLING	
TOTAL CLG. (TONS)	5
SENSIBLE CLG. (MBH)	
ENT. EVAP AIR TEMP (DB/WB.)	
AMBIENT AIR (°F)	
EER/SEER	18 SEER
REFRIGERANT	410A
DESIGN WEIGHT (LBS.)	1500 #
SMOKE DETECTOR (RETURN DUCT)	NO
SPRING ISOLATION ROOF CURB	YES
CONVENIENCE OUTLET - ALWAYS POWERED	YES
BASIS OF DESIGN - DAIKIN	DPS 005A

NOTES:
1. PROVIDE WITH ECM MOTOR

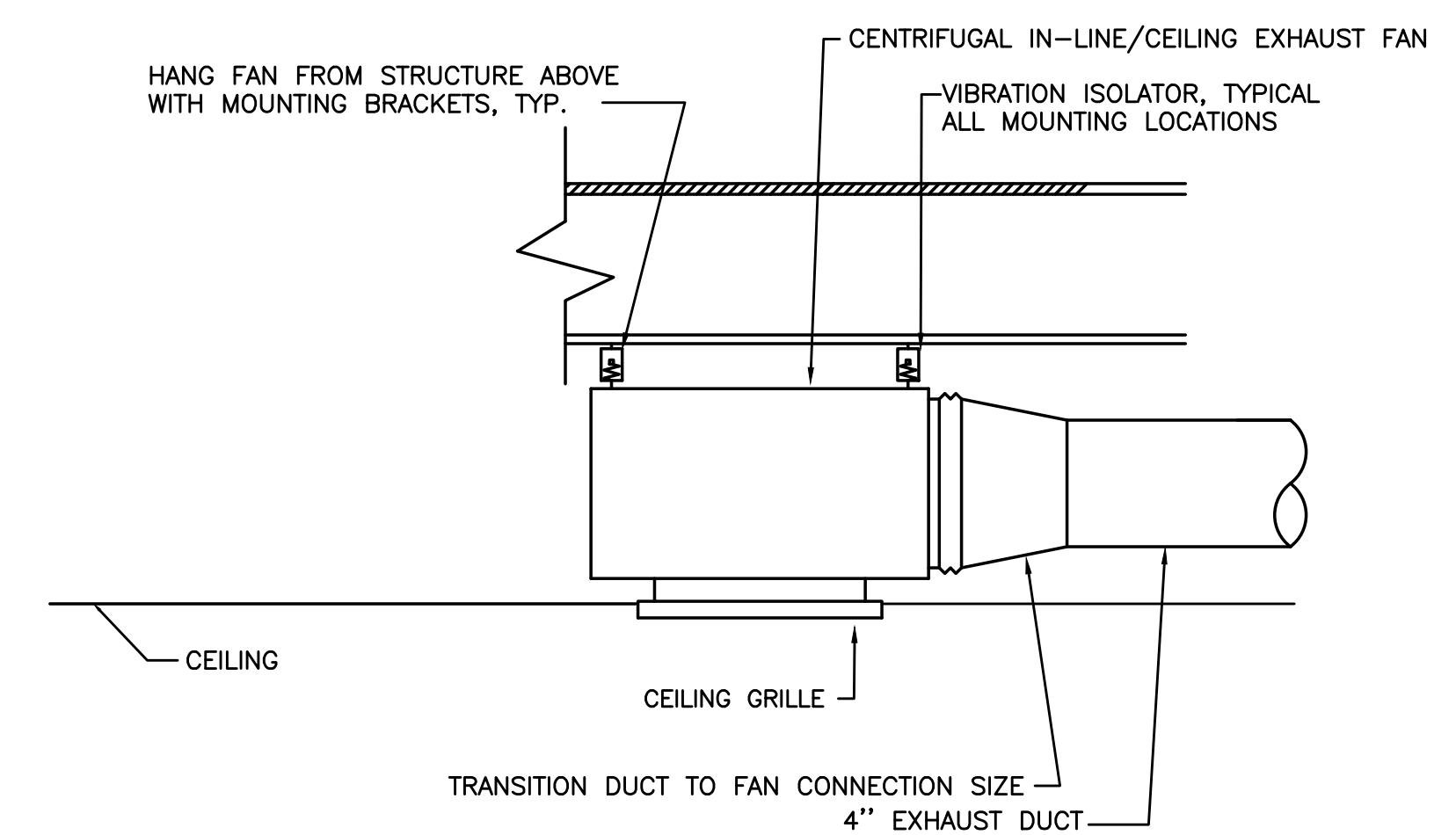
EXHAUST FANS

MARK NUMBER	EF 1
NOTE 1	CEILING
SYSTEM	RESTROOM
CFM	100
TOTAL SP. (IN H2O)	.30"
RPM	720
MOTOR HP	128 W
CONTROLLED BY	SWITCH
INTERLOCKED WITH	-
DAMPER TYPE	BDD
ISOLATION	RIS
DESIGN WEIGHT (LBS)	10
MAX. SONES	1.6
ELECTRICAL (V/Ø) (POWER)	115/1
BASIS OF DESIGN	GREENHECK SF-B150

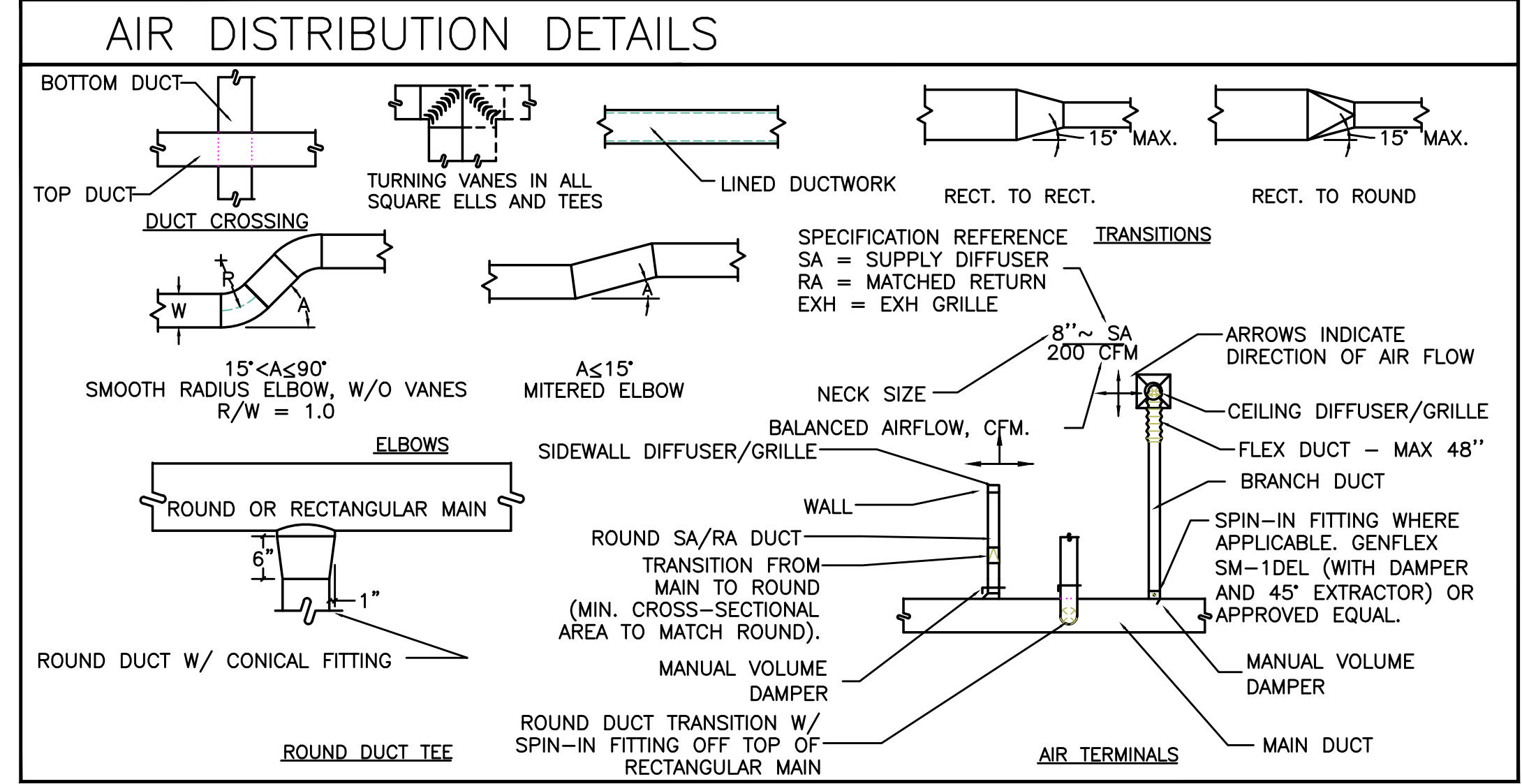
1. PROVIDE WITH SPEED CONTROL NEAR FAN FOR BALANCING



1 RTU INSTALLATION DETAIL
SCALE:DETAIL



2 RESTROOM EXHAUST FAN
SCALE:DETAIL



1/16/2017 9:45:54 AM

50

40

30

20

10

0

6

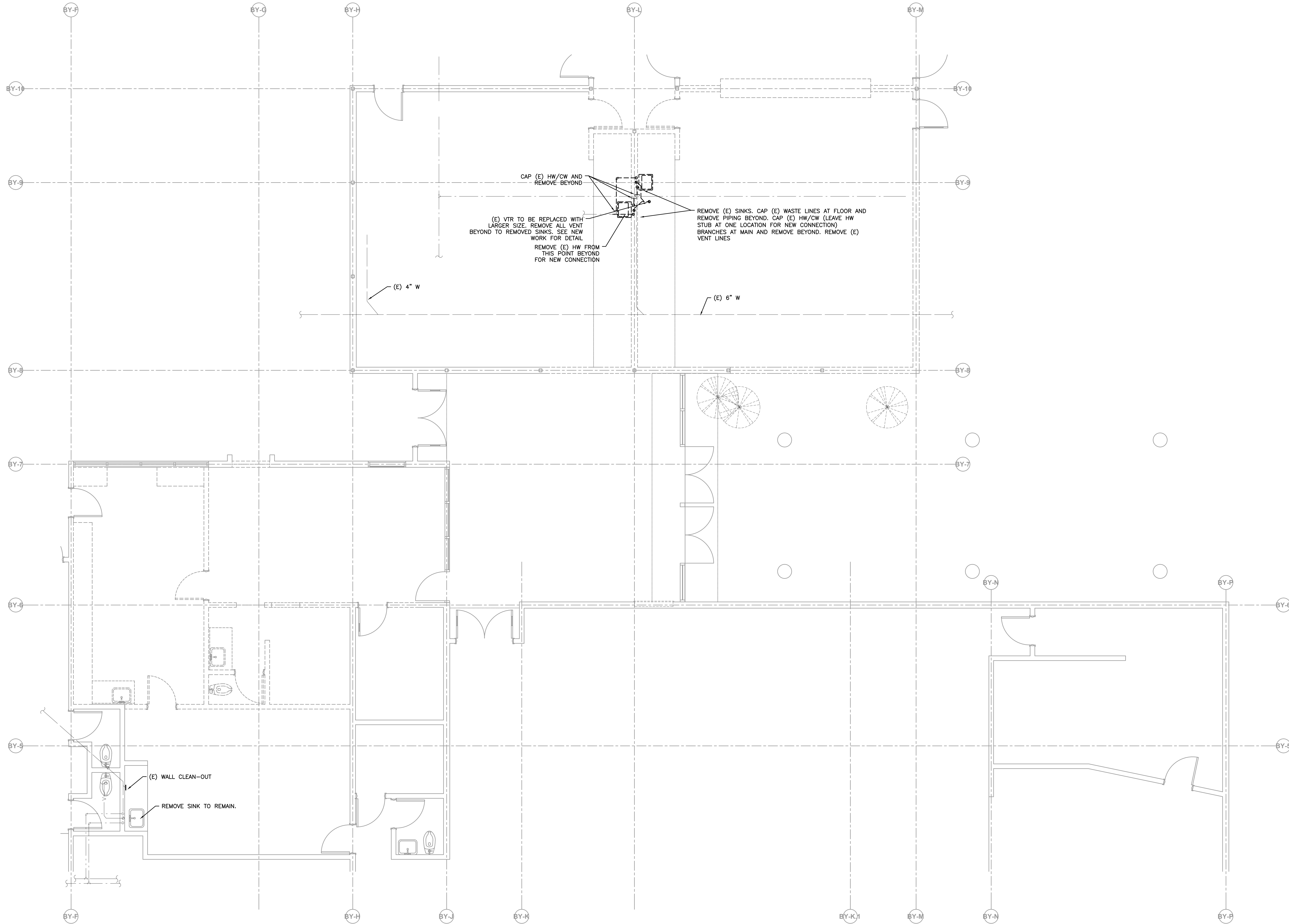
5

4

3

2

1



BORA

Bora Architects, Inc.
 720 SW Washington, Suite 800
 Portland, Oregon 97205
 503.226.1575
 www.bora.co

ISSUED FOR
 INFORMATIONAL
 PURPOSES ONLY

NOT FOR
 CONSTRUCTION

Edward Byrom
 Elementary School
 21800 S.W. 81st Ave
 Tualatin, Oregon 97062

MAR	DATE	DESCRIPTION
K		

Issued:

Scale:

Drawn By:

Reviewed

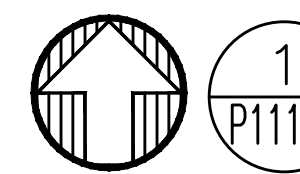
By:

File:

Copyright

PLUMBING DEMO PLAN
 BYROM ES

P111.B



1

PLUMBING DEMO PLAN - BYROM ES

P111.B

SCALE: 1/4" = 0'

1/16/2017 9:45:54 AM

50

40

30

20

10

0

50

40

30

20

10

0

6

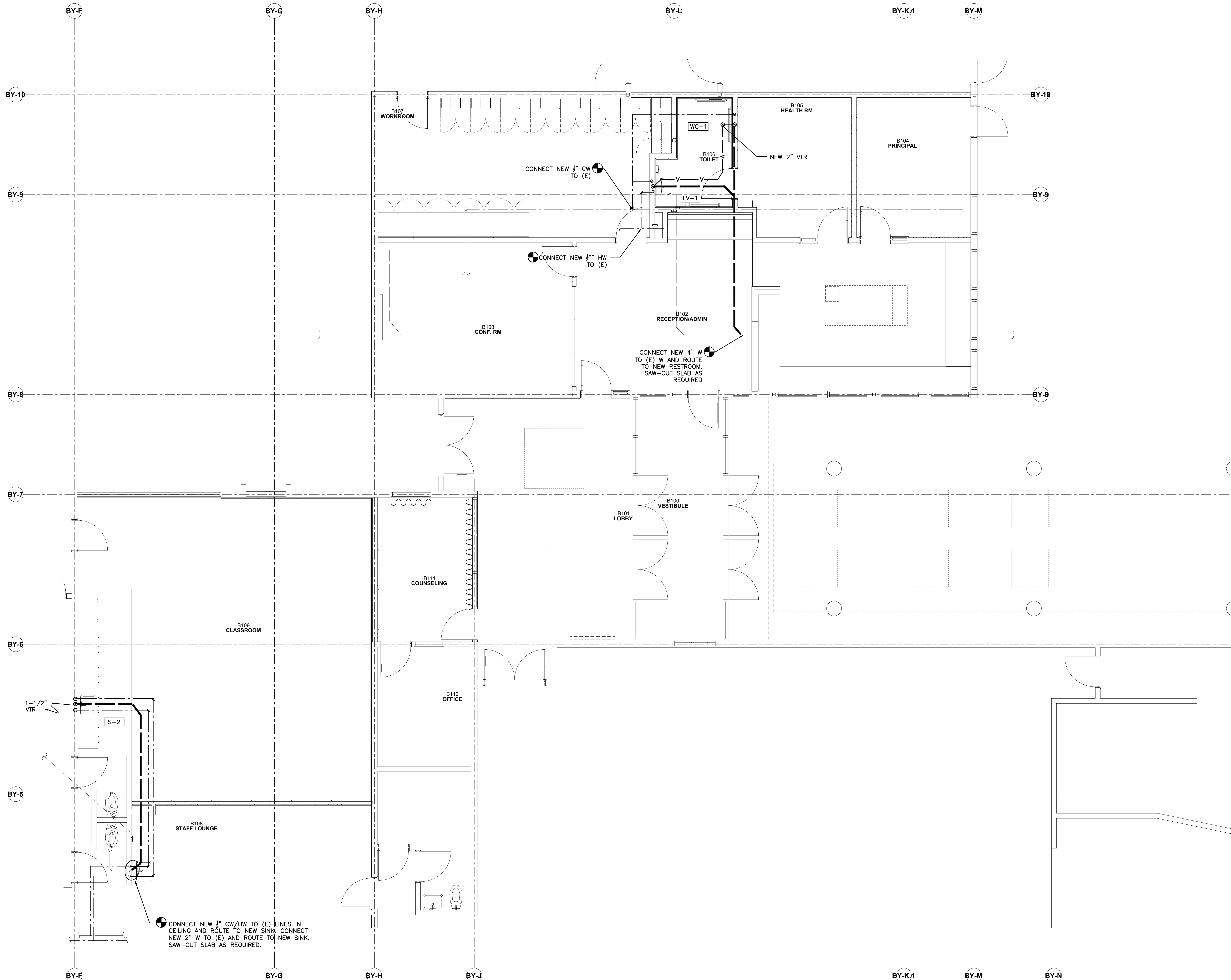
5

4

3

2

1



BORA

Bora Architects, Inc.
 720 SW Washington, Suite 800
 Portland, Oregon 97205
 503.226.1575
 www.bora.co

ISSUED FOR INFORMATIONAL PURPOSES ONLY
 NOT FOR CONSTRUCTION

Edward Byrom
 Elementary School
 21800 S.W. 81st Ave
 Tualatin, Oregon 97062

MAR	DATE	DESCRIPTION
K		

Issued:
 Scale:
 Drawn By:
 Reviewed By:
 File:

Copyright

1 PLUMBING PLAN - BYROM ES
 P121.B SCALE: 1/4"=0'

PLUMBING PLAN BYROM ES

P121.B

1/16/2017 9:45:54 AM

50

40

30

20

10

0