

50

40

30

20

10

0

6

5

4

3

2

1

BR-F

BR-G

BR-H

BR-J

BR-K

BR-L

BR-M BR-N

BR-P

CAP AND REMOVE BEYOND ALL DUCTWORK, GRILLS AND BOXES BEYOND

CAP AND REMOVE BEYOND ALL DUCTWORK, GRILLS AND BOXES BEYOND

CAP AND REMOVE BEYOND ALL DUCTWORK, GRILLS AND BOXES BEYOND

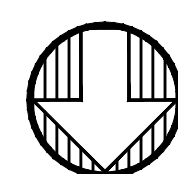
RETURN DUCT OPEN TO CEILING

RETURN DUCT OPEN TO CEILING (1070 CFM)

RETURN DUCT OPEN TO CEILING

**MECHANICAL DEMO NOTES: (#)**

1. REMOVE CONTROLS FROM VAV TERMINALS AND RETURN TO OWNER. REMOVE TERMINAL DEVICES AND ASSOCIATED SENSORS. CAP DUCT WHERE NOTED. SEE SHEET M2BALANCE AIR HANDLER TO NEW TOTAL AND OUTSIDE FLOWS.
2. REMOVE (E) CABINET UNIT HEATER. CAP HWS/R LINES.
3. (E) VAV TO REMAIN. MODIFY SA DUCTS.
4. REMOVE TERMINAL UNIT AND CONTROLS. PATCH DUCT.
5. REMOVE ALL SA DUCTWORK FROM THIS POINT BEYOND
6. (C) DIFFUSER TO REMAIN FOR NEW CONNECTION.
7. (E) DIFFUSER TO BE RELOCATED. SEE NEW WORK FOR DETAIL.
8. REMOVE SA FROM THIS POINT BEYOND FOR NEW DUCT ROUTING. DIFFUSER TO BE RELOCATED. SEE M121.A FOR DETAIL.
9. REMOVE (E) DIFFUSER.
- 10.



1 MECHANICAL DEMO PLAN - BRIDGEPORT  
M111.A SCALE: 1/4" = 1'-0"

50

40

30

20

10

0

# BORA

Bora Architects, Inc.  
720 SW Washington, Suite 800  
Portland, Oregon 97205  
503.226.1575  
www.bora.co

ISSUED FOR  
INFORMATIONAL  
PURPOSES ONLY

NOT FOR  
CONSTRUCTION

Bridgeport School  
Elementary  
5055 SW Borland Road  
Tualatin, Oregon 97062

MAR DATE DESCRIPTION  
K

Issued:

Scale:

Drawn By:

Reviewed

By:

File:

Copyright

MECHANICAL DEMO PLAN  
BRIDGEPORT ES

# M111.A

50

40

30

20

10

0

6

5

4

3

2

1

6

5

4

3

2

1

# BORA

Bora Architects, Inc.  
720 SW Washington, Suite 800  
Portland, Oregon 97205  
503.226.1575  
www.bora.co

ISSUED FOR  
INFORMATIONAL  
PURPOSES ONLY

NOT FOR  
CONSTRUCTION

Bridgeport School  
Elementary  
5055 SW Boiland Road  
Tualatin, Oregon 97062

MAR DATE DESCRIPTION  
K

Issued:

Scale:

Drawn By:

Reviewed

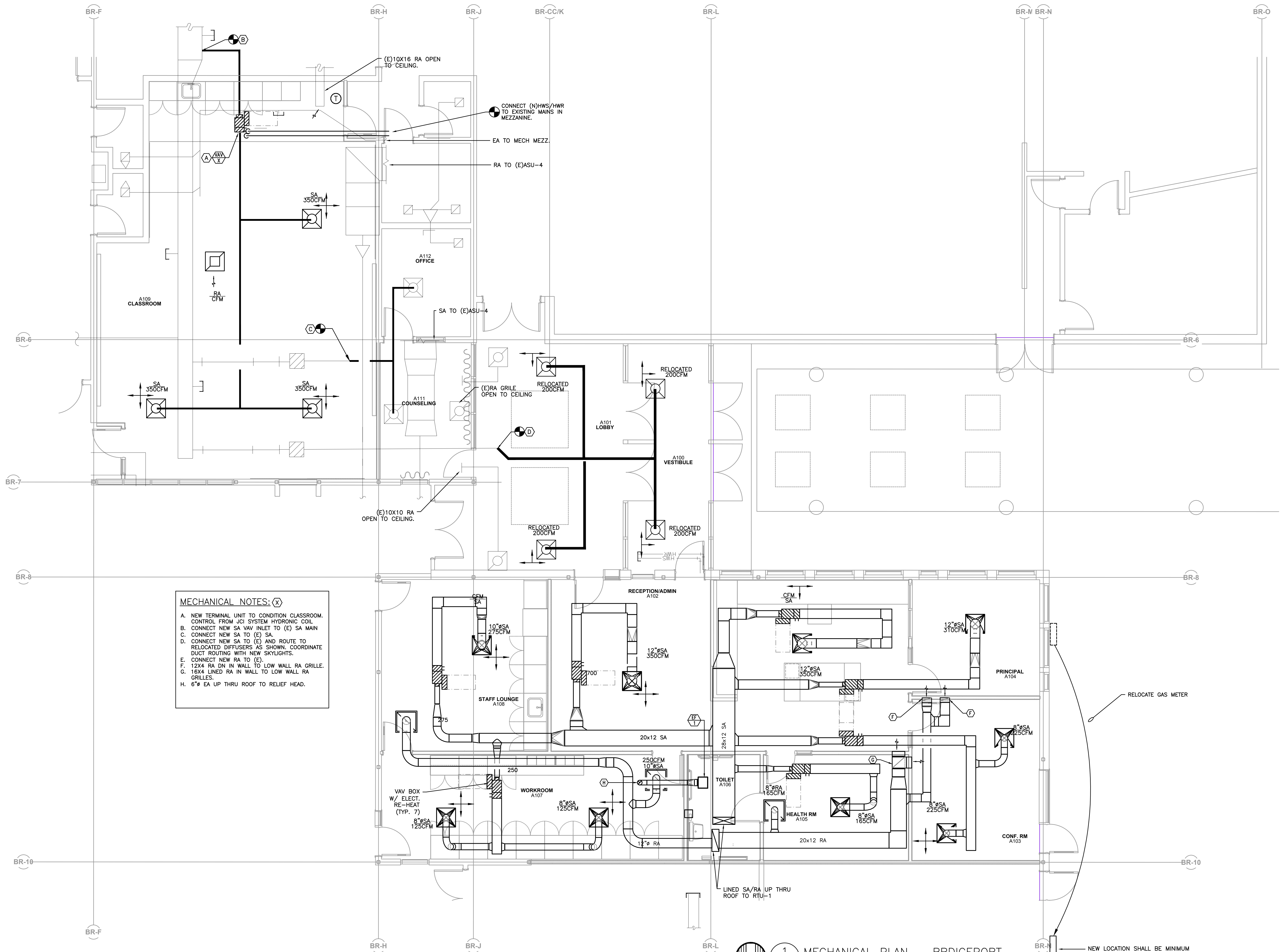
By:

File:

Copyright

MECHANICAL PLAN  
BRIDGEPORT ES

# M121.A



**MECHANICAL NOTES: (X)**

- A. NEW TERMINAL UNIT TO CONDITION CLASSROOM. CONTROL FROM JCI SYSTEM HYDRONIC COIL.
- B. CONNECT NEW SA VAV INLET TO (E) SA MAIN.
- C. CONNECT NEW SA TO (E) SA.
- D. CONNECT NEW SA TO (E) AND ROUTE TO RELOCATED DIFFUSERS AS SHOWN. COORDINATE DUCT ROUTING WITH NEW SKYLIGHTS.
- E. CONNECT NEW RA TO (E).
- F. 12x4 RA DN IN WALL TO LOW WALL RA GRILLE.
- G. 16x4 LINED RA IN WALL TO LOW WALL RA GRILLES.
- H. 6" EA UP THRU ROOF TO RELIEF HEAD.

**1 MECHANICAL PLAN - BRIDGEPORT**  
W121.A SCALE: 1/4" = 1'-0"

1/16/2017 9:45:54 AM

50

40

30

20

10

0

BR-8

BR-7

BR-6

BR-5

BR-4

BR-3

6

5

4

3

2

1

6

5

4

3

2

1

# BORA

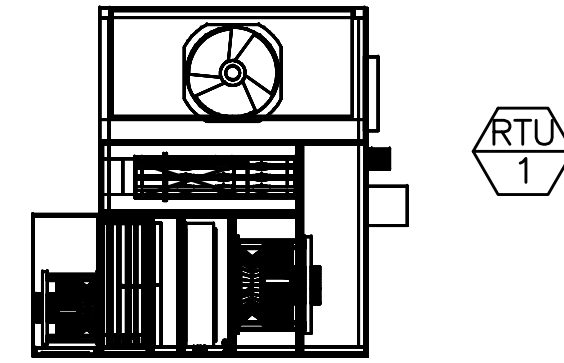
Bora Architects, Inc.  
720 SW Washington, Suite 800  
Portland, Oregon 97205  
503.226.1575  
www.bora.co

ISSUED FOR  
INFORMATIONAL  
PURPOSES ONLY

NOT FOR  
CONSTRUCTION

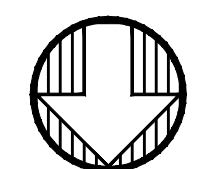
BR-BB

6" RELIEF HEAD  
FROM EF-1 BELOW.



BR-7

BR-K



1  
W131.A

MECHANICAL ROOF PLAN -- BRIDGEPORT

SCALE: 1/4"=1'-0"

MAR DATE DESCRIPTION

K

Issued:

Scale:

Drawn By:

Reviewed

By:

File:

Copyright

MECHANICAL ROOF PLAN  
BRIDGEPORT ES

# M131.A

1/16/2017 9:45:54  
/AM

50

40

30

20

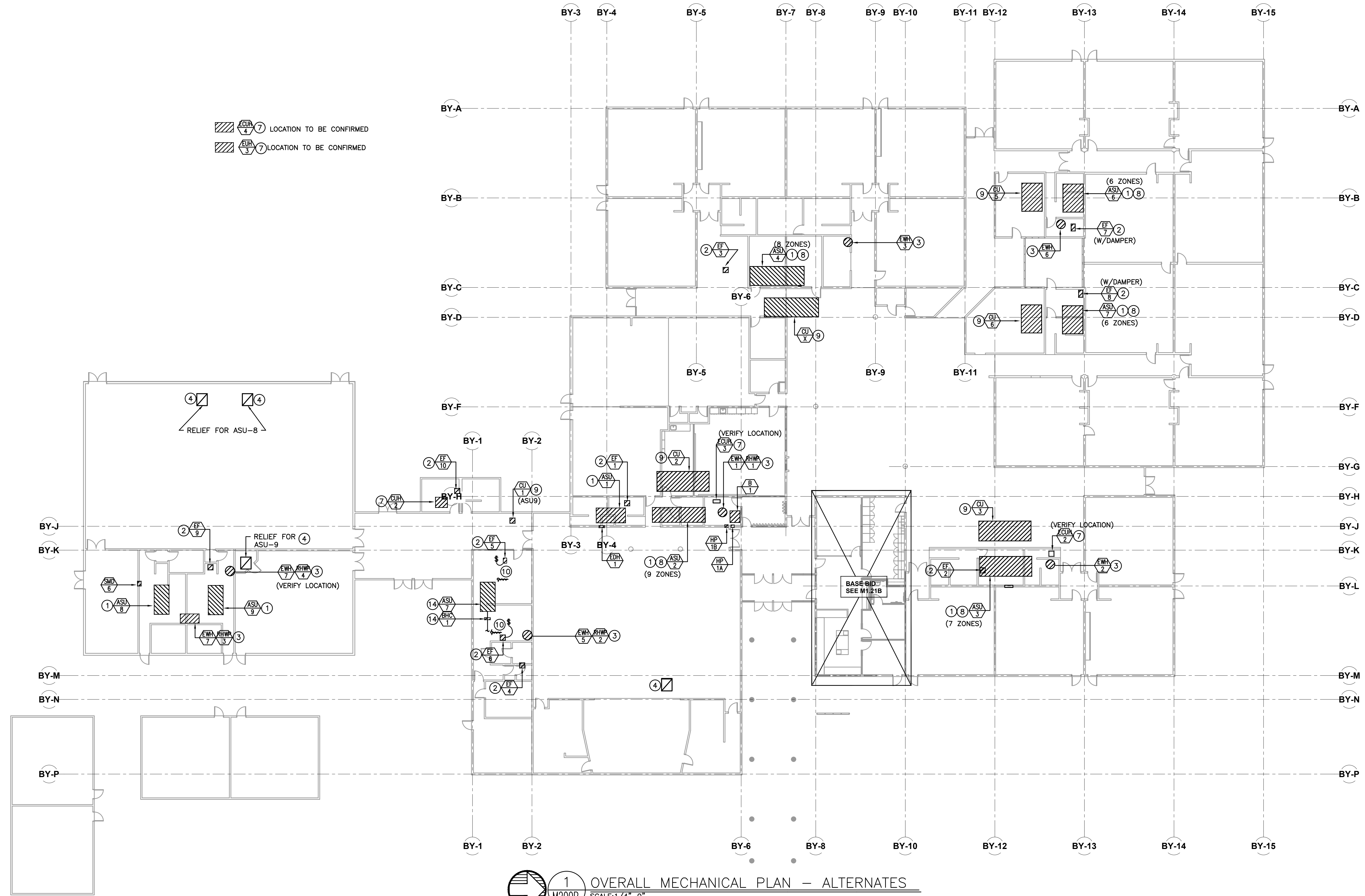
10

0

ISSUED FOR  
 INFORMATIONAL  
 PURPOSES ONLY

NOT FOR  
 CONSTRUCTION

Edward Byrom  
 Elementary School  
 21800 S.W. 81st Ave  
 Tualatin, Oregon 97062



**CONTROL DRAWING KEYED NOTES – ALTERNATES:**

1. PROVIDE DIGITAL DAMPER ACTUATOR AT OSA, RELIEF AND MIXING DAMPERS TO REPLACE EXISTING PNEUMATIC ACTUATORS. RETROFIT EXISTING HEATING VALVE WITH DIGITAL ACTUATOR KIT. CONFIRM VALVE CONFIGURATION PRIOR TO SUBMITTAL.
2. REMOVE PE SWITCH AND OPERATE FAN DIRECTLY FROM DIGITAL CONTROLS. PROVIDE RIB OR STARTER FOR 120V UNIT AS REQUIRED. WHERE DAMPER IS NOTED ON THE PLAN, REPLACE EXISTING PNEUMATIC ACTUATOR WITH DIGITAL DAMPER ACTUATOR.
3. REMOVE (E)PE SWITCH AND OPERATED ELECTRIC WATER HEATER AND ASSOCIATED RECIRC PUMP DIRECTLY FROM DDC.
4. PROVIDE DIGITAL DAMPER ACTUATOR. CONNECT NEW ACTUATOR TO EXISTING JCI SYSTEM CONTROL PANEL. ALTER PROGRAMMING AS REQUIRED FOR THE NEW DIGITAL DEVICE.
5. REMOVE PE SWITCH AND OPERATE ELECTRIC HEATERS DIRECTLY FROM DIGITAL CONTROLS. PROVIDE RIB OR RATED CONTACTOR FOR 120 V OPERATION AS REQUIRED.
6. -
7. REMOVE (E)PE SWITCH AND OPERATE FAN DIRECTLY FROM DDC. FOR HW UNIT, RETROFIT HEATING COIL VALVE WITH DIGITAL ACTUATOR KIT.
8. PROVIDE DIGITAL DAMPER ACTUATOR FOR MULTIZONE DAMPERS, # OF ZONES SHOWN ON PLAN.
9. REMOVE PE SWITCH AND OPERATE DIRECTLY FROM DIGITAL CONTROLS.
10. REMOVE (E)PNEUMATIC DAMPER ACTUATOR AT STEAM AND STOVE HOODS (EF-5 & EF-6) AND REPLACE WITH DIGITAL DAMPER ACTUATOR. ALTER PROGRAMMING AS REQUIRED FOR THE NEW DIGITAL DEVICE.
11. REMOVE (E) BY-PASS WAV BOXES AND REPLACE WITH NEW SINGLE DUCT WAV BOX WITH DDC CONTROL.
12. (E)FIRE SMOKE DAMPER – REMOVE (E)PNEUMATIC DAMPER ACTUATOR AND REPLACE WITH NEW DIGITAL ACTUATOR.
13. REMOVE (E) PE SWITCH AND OPERATE PUMP DIRECTLY FROM DIGITAL CONTROLS.
14. PROVIDE DIGITAL OSA DAMPER, FACE/BY-PASS DAMPER TO REPLACE (E)PNEUMATIC ACTUATORS. RETROFIT (E)BOOSTER HEATING COIL VALVE WITH DIGITAL ACTUATOR KIT. CONFIRM VALVE SIZING PRIOR TO SUBMITTAL.

**CONTROL DRAWING GENERAL NOTES:**

1. WHERE EXISTING PNEUMATIC DEVICES ARE REMOVED, REMOVE ALL ASSOCIATED PNEUMATIC PIPING AND CONTROLS. CONNECT NEW ACTUATOR / DDC DEVICES TO EXISTING JCI SYSTEM CONTROL PANEL. ALTER PROGRAMMING AS REQUIRED FOR THE NEW DIGITAL DEVICE. CONFIRM DAMPER AND VALVE SIZES PRIOR TO SUBMITTAL.

MAR	DATE	DESCRIPTION
K		

Issued:  
 Scale:  
 Drawn By:  
 Reviewed By:  
 File:

Copyright



6

5

4

3

2

1

# BORA

Bora Architects, Inc.  
720 SW Washington, Suite 800  
Portland, Oregon 97205  
503.226.1575  
www.bora.co

ISSUED FOR INFORMATIONAL PURPOSES ONLY  
NOT FOR CONSTRUCTION

Bridgeport Elementary School  
5505 SW Beilard Road  
Tualatin, Oregon 97062

MAR DATE DESCRIPTION  
K

Issued:  
Scale:  
Drawn By:  
Reviewed By:  
File:

Copyright

MECHANICAL LEGENDS AND SCHEDULES

# M600.A

### MECHANICAL LEGEND

	SUPPLY AIR DIFFUSER	AFF	ABOVE FINISH FLOOR
	RETURN AIR GRILLE	AHU	AIR HANDLING UNIT
	EXHAUST AIR GRILLE	B.D.	BOTTOM OF DUCT
	PERFORATED RETURN AIR PANEL	BHP	BRAKE HORSEPOWER
	DIRECTIONAL AIR FLOW	BTU	BRITISH THERMAL UNITS
	MANUAL VOLUME DAMPER	CFM	CUBIC FEET PER MINUTE
	SUPPLY OR OUTSIDE AIR DUCT UP & DOWN	CONN.	CONNECTION
	RETURN AIR DUCT UP & DOWN	CONT.	CONTINUATION
	EXHAUST AIR DUCT UP & DOWN	CW	DOMESTIC COLD WATER
	SUPPLY OR OUTSIDE AIR DUCT UP & DOWN	DB	DRY BULB
	RETURN AIR DUCT UP & DOWN	DIA.	DIAMETER
	EXHAUST AIR DUCT UP & DOWN	DIST.	DISTRIBUTION
	SUPPLY OR OUTSIDE AIR DUCT UP & DOWN	EA	EXHAUST AIR
	RETURN AIR DUCT UP & DOWN	EDB	ENTERING DRY BULB TEMPERATURE
	EXHAUST AIR DUCT UP & DOWN	EWB	ENTERING WET BULB TEMPERATURE
	SUPPLY OR OUTSIDE AIR DUCT UP & DOWN	EWT	ENTERING WATER TEMPERATURE
	RETURN AIR DUCT UP & DOWN	FF	FINISH FLOOR
	EXHAUST AIR DUCT UP & DOWN	FIXT.	FIXTURE
	SUPPLY OR OUTSIDE AIR DUCT UP & DOWN	FPM	FEET PER MINUTE
	RETURN AIR DUCT UP & DOWN	FPS	FEET PER SECOND
	EXHAUST AIR DUCT UP & DOWN	FT.	FEET / FOOT
	VAV TERMINAL UNIT	GA.	GAUGE
	VAV TERMINAL UNIT	GPM	GALLONS PER MINUTE
	EXISTING	H	HEIGHT
	CONNECT TO EXISTING	HP	HORSEPOWER
	THERMOSTAT OR TEMP. SENSOR	I.D.	INSIDE DIAMETER
	NOTE	IN.	INCHES
	EQUIPMENT DESIGNATOR	L	LENGTH
	BALL VALVE	LBS.	POUNDS
	GATE VALVE	LDB	LEAVING DRY BULB
	CHECK VALVE	LWB	LEAVING WET BULB
	BALANCING VALVE	LWT	LEAVING WATER TEMPERATURE
	THERMOMETER	MAX.	MAXIMUM
	DIRECTION OF FLOW	MBH	THOUSANDS OF BTUs PER HOUR
	PUMP	MIN.	MINIMUM
	STRAINER	NC	NOISE CRITERIA
	PRESSURE GAUGE	N.C.	NORMALLY CLOSED
	PETE'S PLUG	N.I.M.	NOT IN MECHANICAL
	DOUBLE CHECK ASSEMBLY	NO.	NUMBER
	PRESSURE REDUCING VALVE	N.O.	NORMALLY OPEN
	UNION	O.A.	OUTSIDE AIR
	2-WAY CONTROL VALVE	P	PERSON
	3-WAY CONTROL VALVE	PSI	POUNDS PER SQUARE INCH
	CAP	P/T	PRESSURE / TEMPERATURE
	SMOKE DETECTOR	R.A.	RETURN AIR
	MOTORIZED DAMPER	RECT.	RECTANGULAR
	SEISMIC BRACING	REQ'D	REQUIRED
	LATERAL BRACING	S.A.	SUPPLY AIR
	LONGITUDINAL BRACING	S.P.	STATIC PRESSURE
	LONGITUDINAL & LATERAL BRACING	SO.	SQUARE
	(E) EXISTING	TEMP.	TEMPERATURE
	(D) DEMOLISH	TYP.	TYPICAL
	NEW WORK	VAV	VARIABLE AIR VOLUME
	HWS (HWS HEATING WATER SUPPLY)	W	WIDTH
	HWR (HWR HEATING WATER RETURN)	WB	WET BULB
	FIRE DAMPER	WPD	WATER PRESSURE DROP
	FIRE / SMOKE DAMPER	φ	DIAMETER
	SMOKE DAMPER		

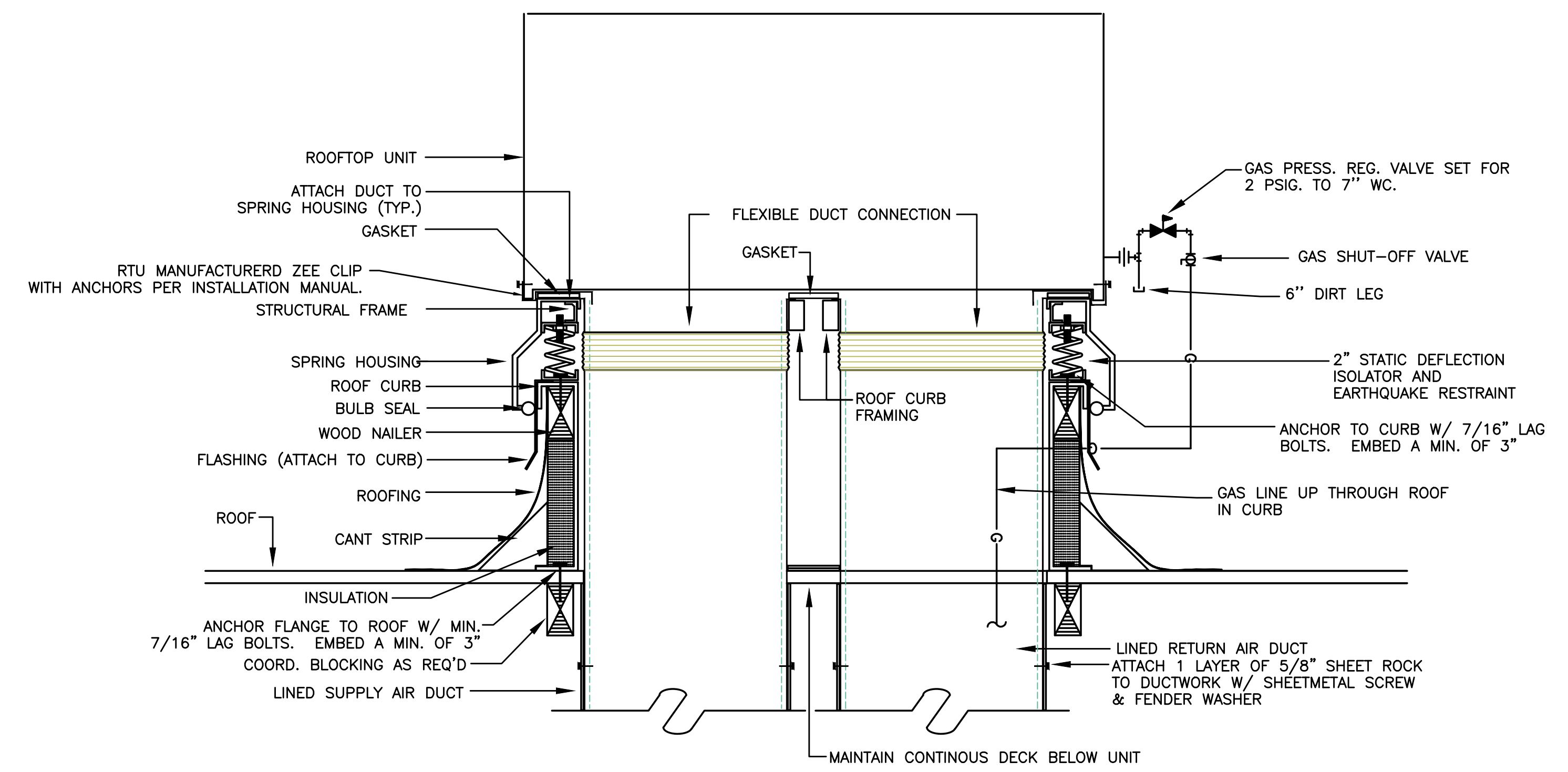
### ROOFTOP HVAC UNITS

MARK NUMBER	RTU 1
SYSTEM	ADMIN
TYPE	VAV
DISCHARGE	VERTICAL
TOTAL CFM	2000
ECONOMIZER	YES
MIN. OSA	-
MAX OSA (FULL OCCUPANCY)	-
CO2 CONTROL	YES
EXTERNAL SP. (*H2O)	1.25"
MOTOR HP.	4 HP/NOTE 1
TOTAL CFM	2000
EXTERNAL SP (*H2)	0.50"
FAN POWER	1.3 HP/NOTE 1
HEATING	
GAS INPUT(MBH)	120MBH
EFF. (AFUE)	80.0%
MODULATING/TURN DOWN:	5:1
COOLING	
TOTAL CLG. (TONS)	5
SENSIBLE CLG. (MBH)	
ENT. EVAP AIR TEMP (DB/WB.)	
AMBIENT AIR (°F)	
EER/SEER	18 SEER
REFRIGERANT	410A
DESIGN WEIGHT (LBS.)	1500 #
SMOKE DETECTOR (RETURN DUCT)	NO
SPRING ISOLATION ROOF CURB	YES
CONVENIENCE OUTLET - ALWAYS POWERED	YES
BASIS OF DESIGN - DAIKIN	DPS 005A

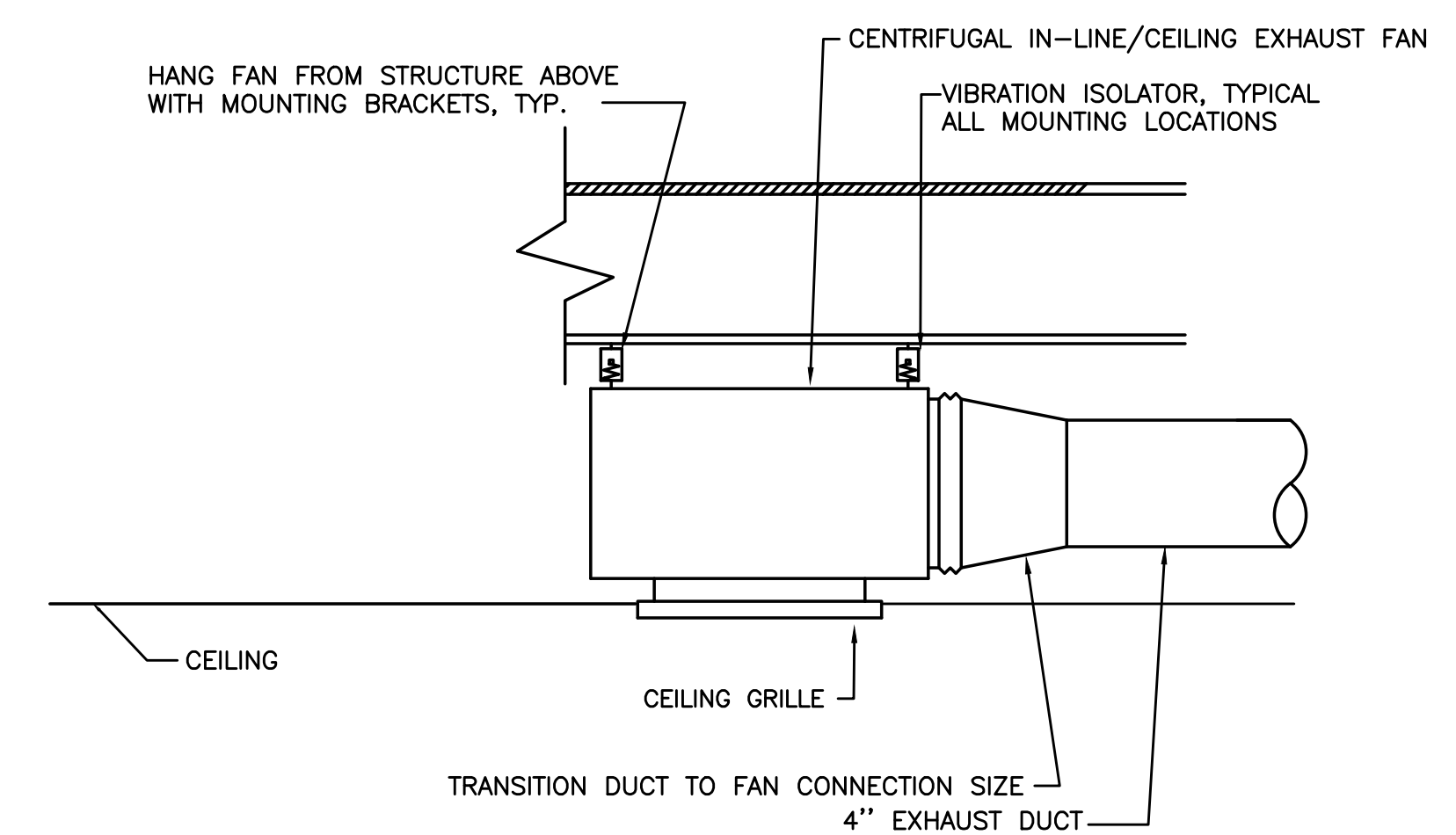
### EXHAUST FANS

MARK NUMBER	EF 1
NOTE	NOTE 1
TYPE	CEILING
SYSTEM	RESTROOM
CFM	100
TOTAL SP. (IN H2O)	.30"
RPM	720
MOTOR HP	128 W
CONTROLLED BY	SWITCH
INTERLOCKED WITH	-
DAMPER TYPE	BDD
ISOLATION	RIS
DESIGN WEIGHT (LBS)	10
MAX. SONES	1.6
ELECTRICAL (V/φ) (POWER)	115/1
BASIS OF DESIGN	GREENHECK SF-B150

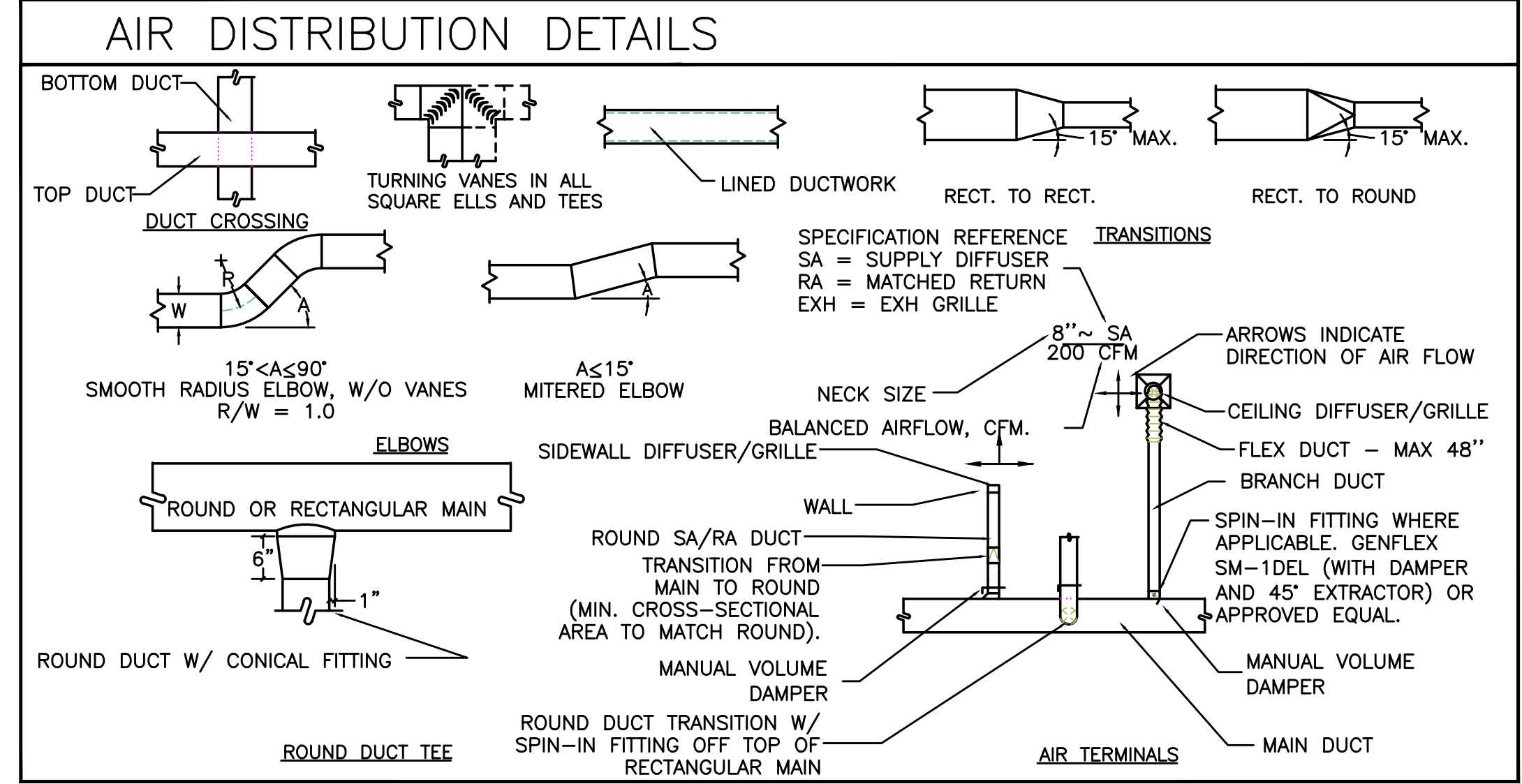
1. PROVIDE WITH SPEED CONTROL NEAR FAN FOR BALANCING



1 RTU INSTALLATION DETAIL  
SCALE:DETAIL



2 RESTROOM EXHAUST FAN  
SCALE:DETAIL



1/16/2017 9:45:54 AM

50

40

30

20

10

0

6

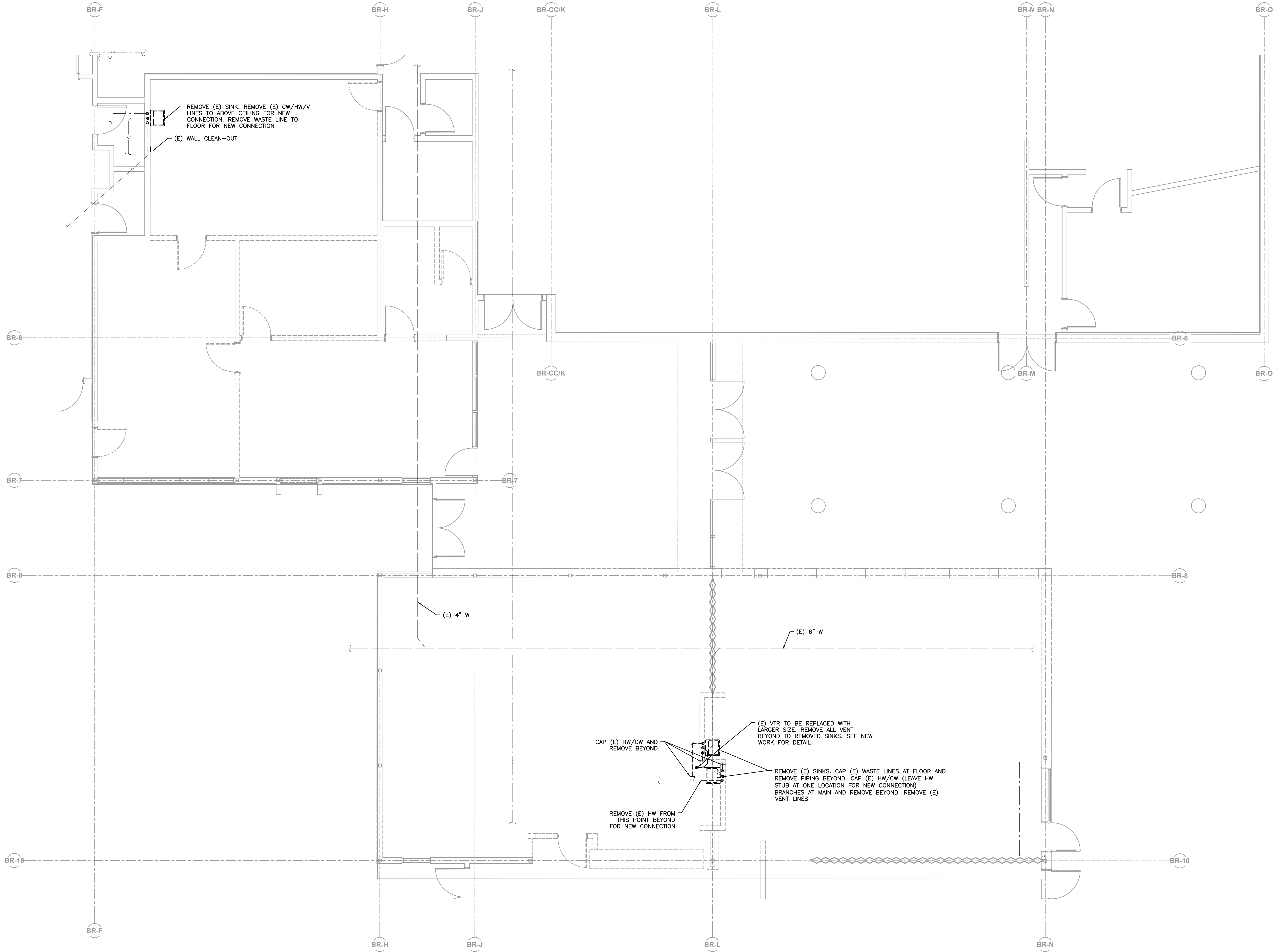
5

4

3

2

1



# BORA

Bora Architects, Inc.  
 720 SW Washington, Suite 800  
 Portland, Oregon 97205  
 503.226.1575  
 www.bora.co

ISSUED FOR  
 INFORMATIONAL  
 PURPOSES ONLY

NOT FOR  
 CONSTRUCTION

Bridgeport School  
 Elementary  
 5505 SW Boiland Road  
 Tualatin, Oregon 97062

MAR	DATE	DESCRIPTION
K		

Issued:

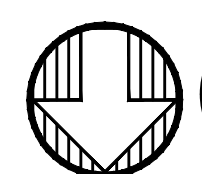
Scale:

Drawn By:

Reviewed By:

File:

Copyright



1 PLUMBING DEMO PLAN - BRIDGEPORT  
 P111.A SCALE: 1/4" = 1'-0"

PLUMBING DEMO PLAN  
 BRIDGEPORT ES

# P111.A

1/16/2017 9:45:54  
 /AM

50

40

30

20

10

0



50

40

30

20

10

0

6

5

4

3

2

1

BR-F

BR-H

BR-J

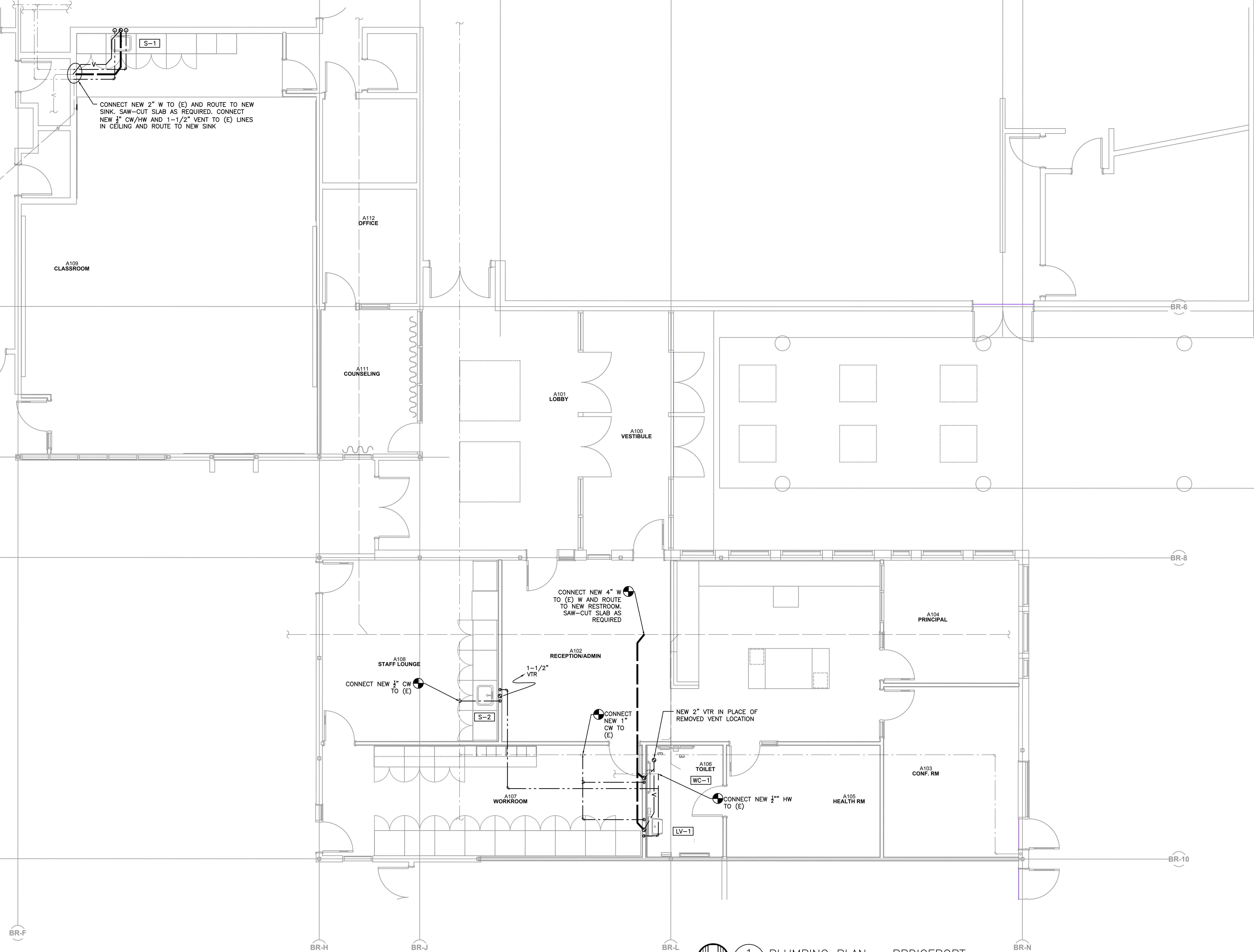
BR-CC/K

BR-L

BR-M

BR-N

BR-O



# BORA

Bora Architects, Inc.  
 720 SW Washington, Suite 800  
 Portland, Oregon 97205  
 503.226.1575  
 www.bora.co

ISSUED FOR  
 INFORMATIONAL  
 PURPOSES ONLY

NOT FOR  
 CONSTRUCTION

Bridgeport School  
 Elementary  
 5055 SW Borland Road  
 Tualatin, Oregon 97062

MAR	DATE	DESCRIPTION
K		

Issued:  
 Scale:  
 Drawn By:  
 Reviewed By:  
 File:

Copyright

1 PLUMBING PLAN - BRIDGEPORT  
 P121.A SCALE: 1/4" = 1'-0"

PLUMBING PLAN  
 BRIDGEPORT ES  
**P121.A**

50

40

30

20

10

0



1 OVERALL MECHANICAL PLAN - ALTERNATES  
 M2008 SCALE: 1/4"=0'

KEYED NOTES:  
 1. NEW FLOOR AND WAISTCOTING TILES TO BE INSTALLED. REMOVE (E) WATER CLOSET FOR THE TILE WORK AND RE-INSTALL (E) FIXTURE.

ISSUED FOR  
 INFORMATIONAL  
 PURPOSES ONLY

NOT FOR  
 CONSTRUCTION

Edward Byrom  
 Elementary School  
 21800 S.W. 91st Ave  
 Tualatin, Oregon 97062

MAR	DATE	DESCRIPTION
K		

Issued:

Scale:

Drawn By:

Reviewed

By:

File:

Copyright