

A

B

C

D

E

F

G

H

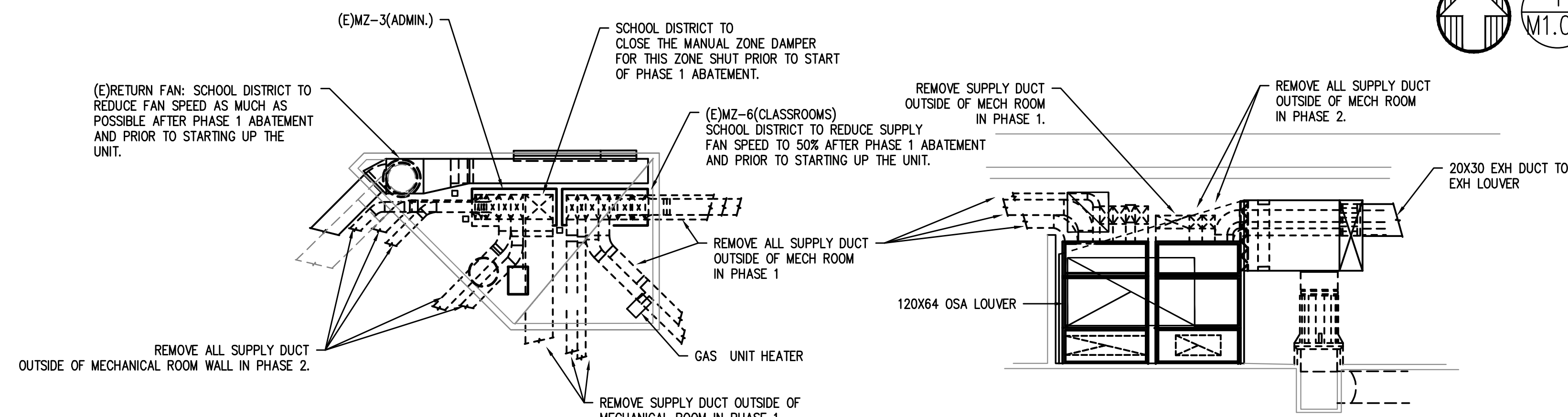
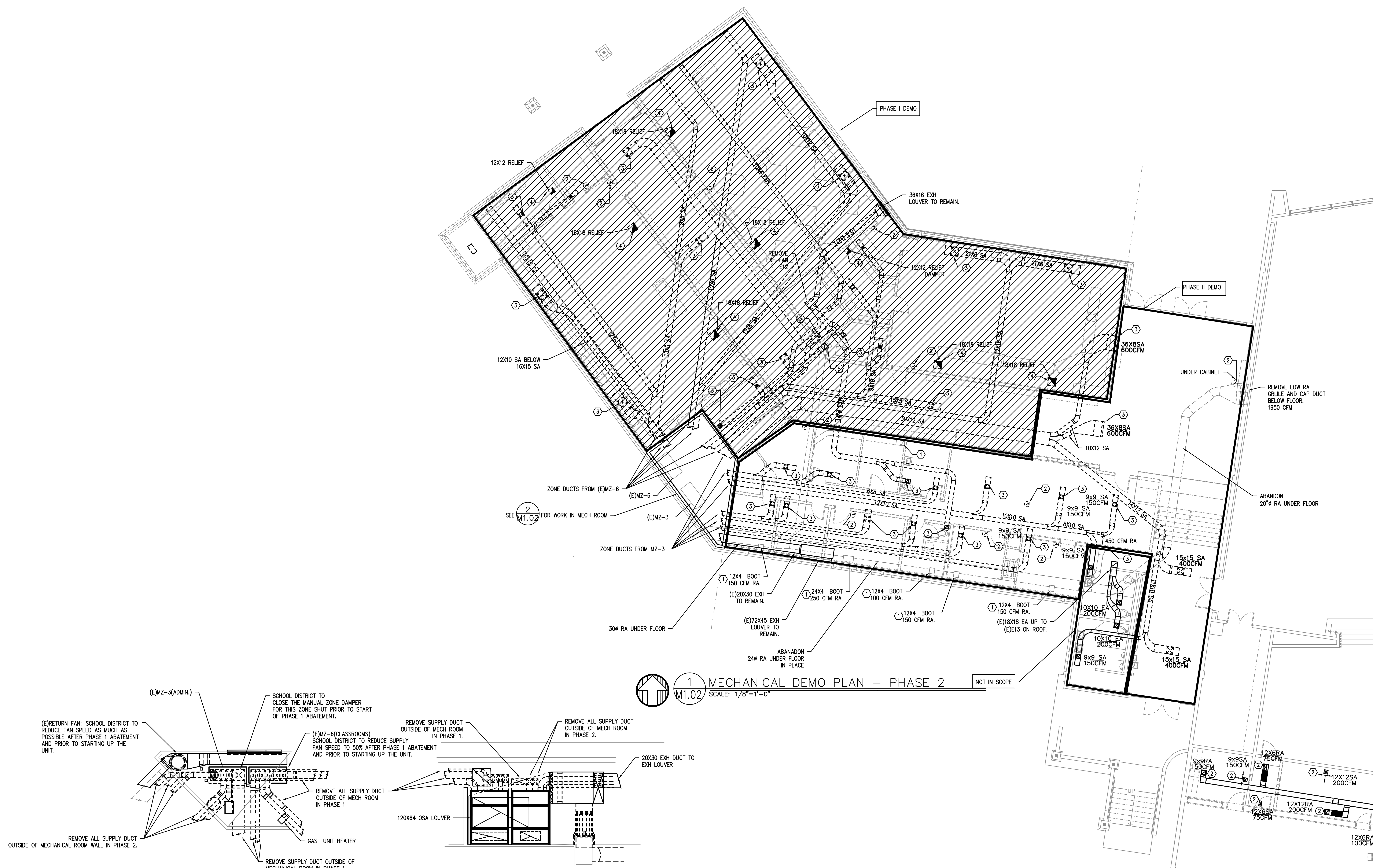
J

K

City Of Bend Approval Stamp:

- KEYED NOTES:**
1. REMOVE LOW RA GRILLE AT CABINET AND CAP OFF DUCT BELOW FLOOR. COORDINATE FLOOR PATCH WITH ARCHITECT.
 2. REMOVE (E) T-STAT AND PATCH WALL. COORDINATE WALL PATCH WITH ARCHITECT.
 3. REMOVE (E)GRILLE/DIFFUSER.
 4. DEMO RELIEF GRILLE AND DUCT UP THRU ROOF. RETAIN RELIEF HEAD ON ROOF FOR REMOVAL BY MECHANICAL CONTRACTOR.
 5. CAP RA DUCT ABOVE CEILING OUTSIDE OF CHASE. ABANDON RA DUCT DOWNSTREAM IN PLACE.

- GENERAL NOTES:
1. WHERE DUCT CONTINUES TO PHASE 2, CAP DUCTWORK AT THE PHASE 1 BOUNDARY.

[illegible]**PERMIT SET****PILOT BUTTE MIDDLE
SCHOOL - BLDGS E&F**

1501 NE Neff Road,
Bend OR 97701

BLRB architects

Drawing Title:

MECHANICAL ASBESTOS
ABATEMENT PHASING
PLAN - PHASE 2

Date : 02.09.2018

Drawn By :	INITIALS
------------	----------

Revised Date

Project No.	17 34B
-------------	--------

Stam

Sheet No.

MFIA
INC.

Consulting Engineers
2007 S.E. Ash St.
Portland, OR 97214
PHN: (503) 234-0548
FAX: (503) 234-0677
WWW.MFIA-ENG.COM
CONTACT: TAKAKO BAKER

M1.02