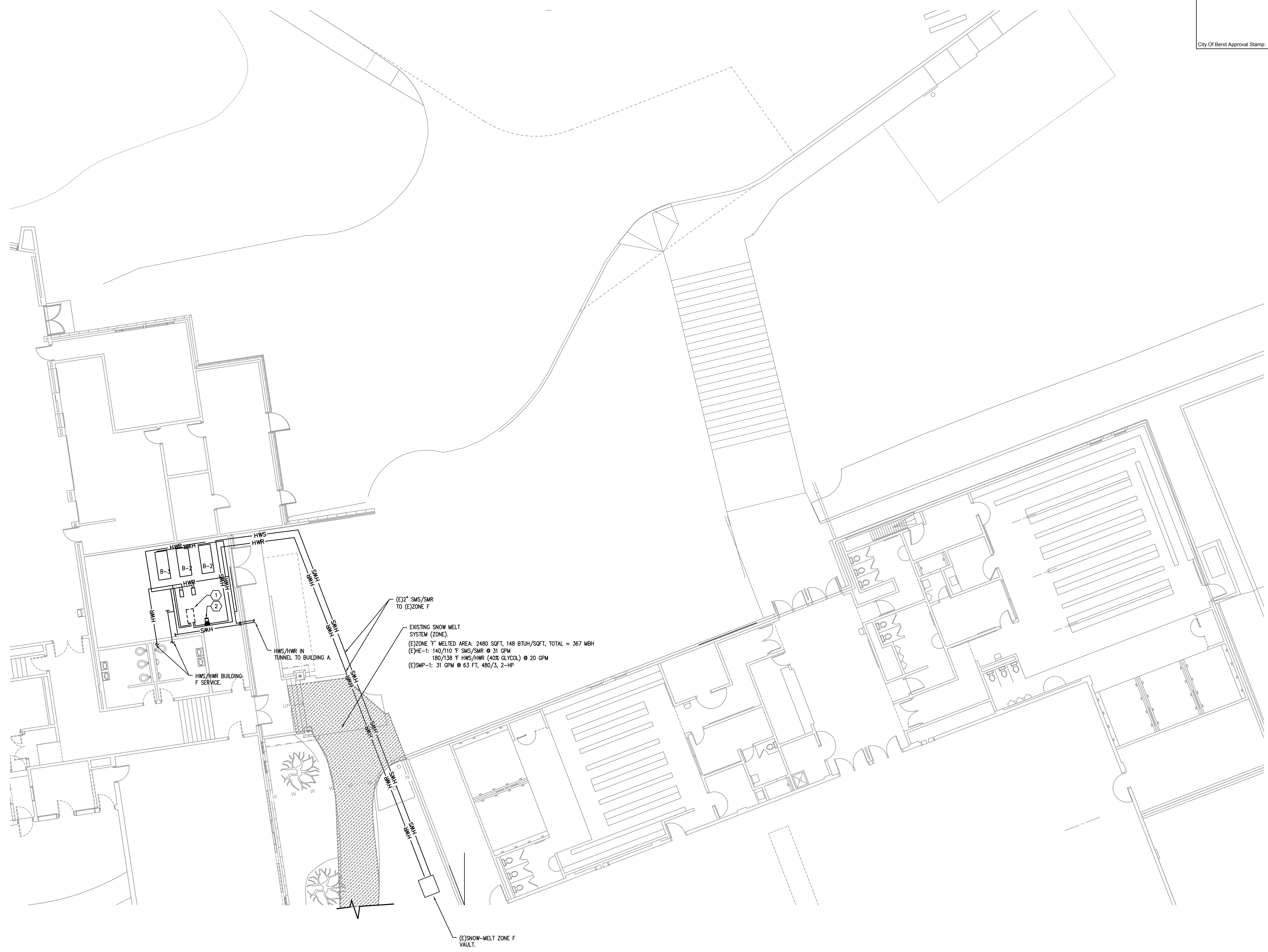


SHEET NOTES:
 1. REMOVE (E)SNOW MELT HEAT EXCHANGER, HE-1.
 2. REMOVE (E)SNOW MELT PUMP, SMP-1.

City Of Bend Approval Stamp:



1 SNOW-MELT SYSTEM DEMO PLAN
 MD2.0 SCALE: 1/8"=1'-0"

#	Date	Description
Revision Schedule		

DESIGN DEVELOPMENT

PILOT BUTTE MIDDLE SCHOOL - BLDGS E&F
 Project Address

BLRB architects

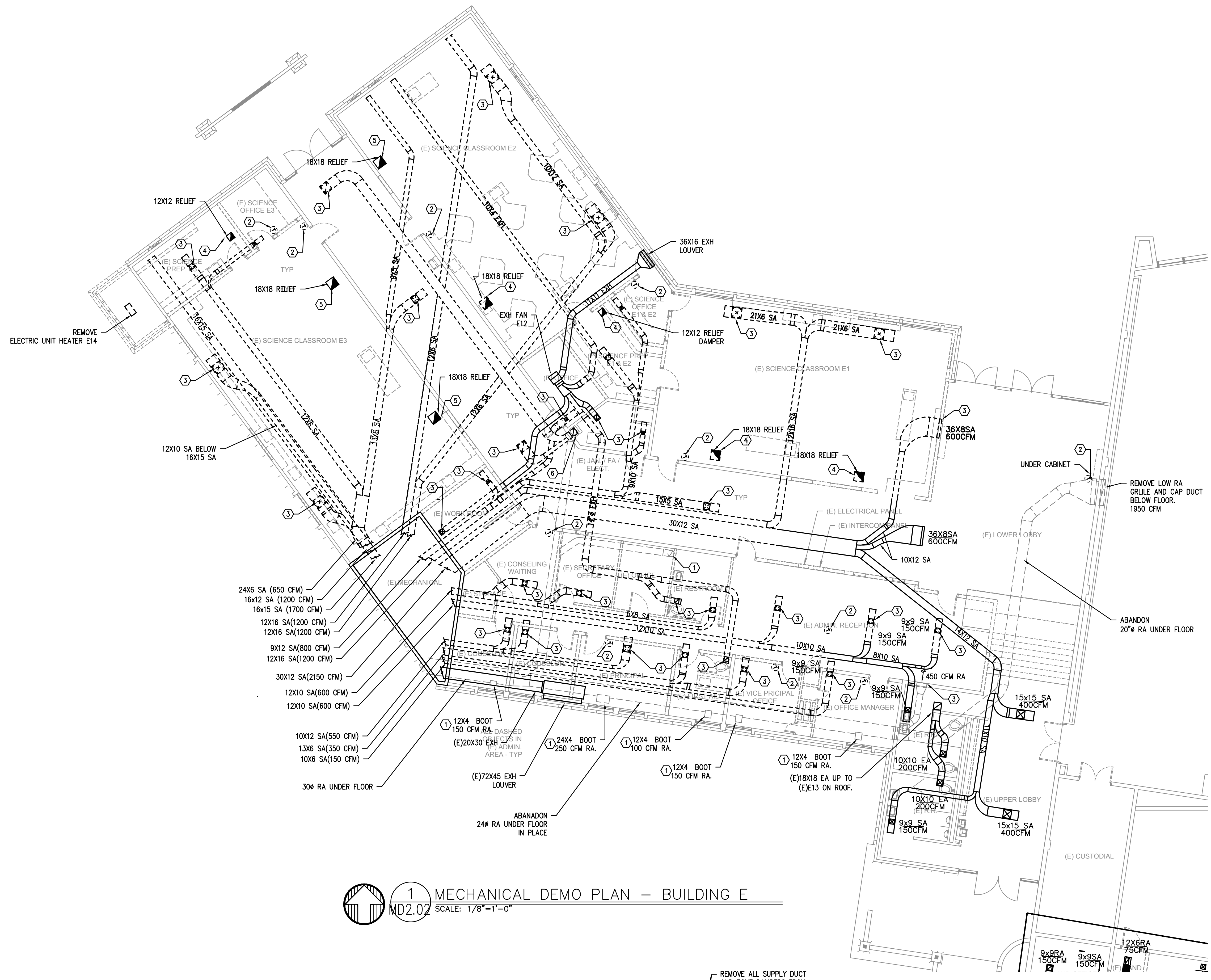
Drawing Title:
MECHANICAL SNOWMELT SYSTEM DEMO PLAN

Date : 11.11.2017	Drawn By : INITIALS
Revised Date :	Project No. 17.34B
Stamp	Sheet No.

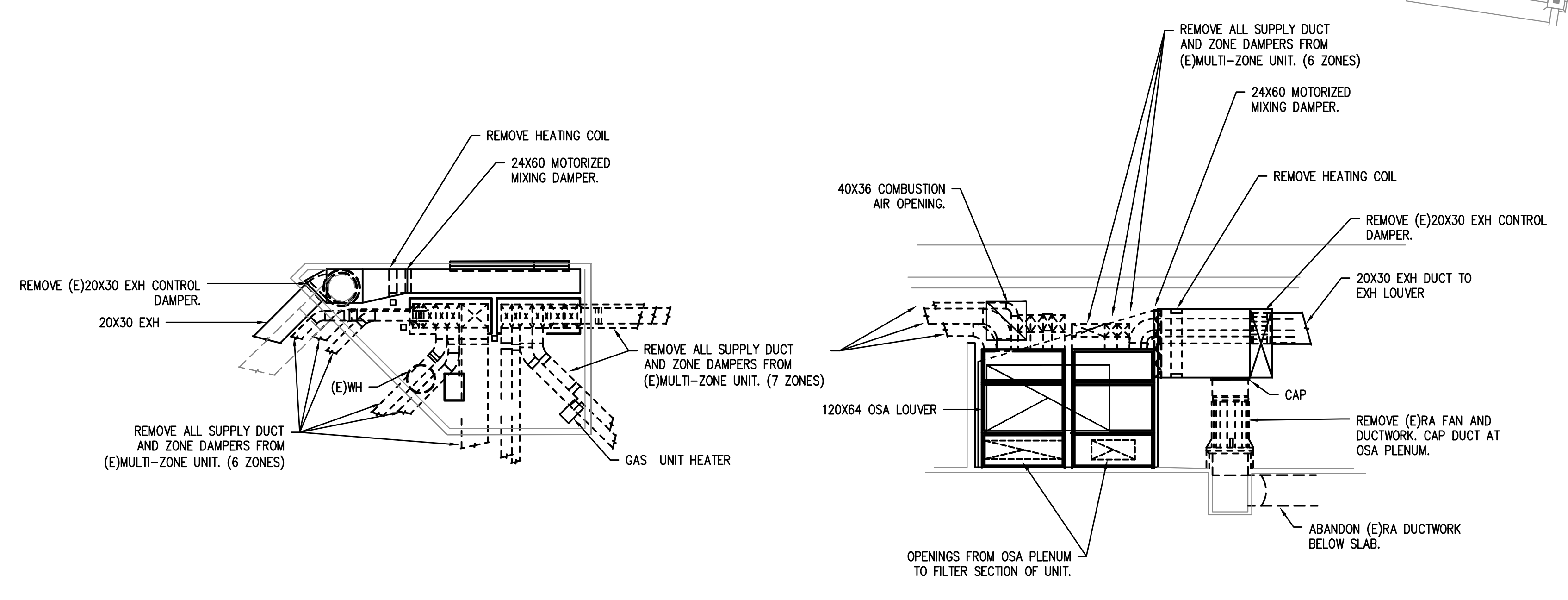
MD2.01

MEI Consulting Engineers
 2007 S.E. Ash St.
 Portland, OR 97214
 PHN: (503) 234-0548
 FAX: (503) 234-0877
 WWW.MEIA-ENG.COM
 CONTACT: TAKAKO BAKER

City Of Bend Approval Stamp:



1 MECHANICAL DEMO PLAN - BUILDING E
 MD2.02 SCALE: 1/8"=1'-0"



2 MECHANICAL ROOM DEMO DETAIL
 MD2.02 SCALE: 1/8"=1'-0"

- KEYED NOTES:**
1. REMOVE LOW RA GRILLE AT CABINET AND CAP OFF DUCT BELOW FLOOR. COORDINATE FLOOR PATCH WITH ARCHITECT.
 2. REMOVE (E) T-STAY AND PATCH WALL. COORDINATE WALL PATCH WITH ARCHITECT.
 3. REMOVE (E)GRILLE/DIFFUSER.
 4. DEMO RELIEF GRILLE AND DUCT UP THRU ROOF. CAP CURB AT ROOF.
 5. (E)RELIEF GRILLE AND DUCT THRU ROOF TO REMAIN FOR CONNECTION TO NEW ROOF EXHAUST FAN.
 6. CAP OFF RA DUCT ABOVE CEILING OUTSIDE OF CHASE. ABANDON RA DUCT DOWNSTREAM IN PLACE.

#	Date	Description

DESIGN DEVELOPMENT

PILOT BUTTE MIDDLE SCHOOL - BLDGS E&F
 Project Address

BLRB architects

Drawing Title:
MECHANICAL DEMO PLAN - BUILDING E

Date: 11.11.2017 Drawn By: INITIALS

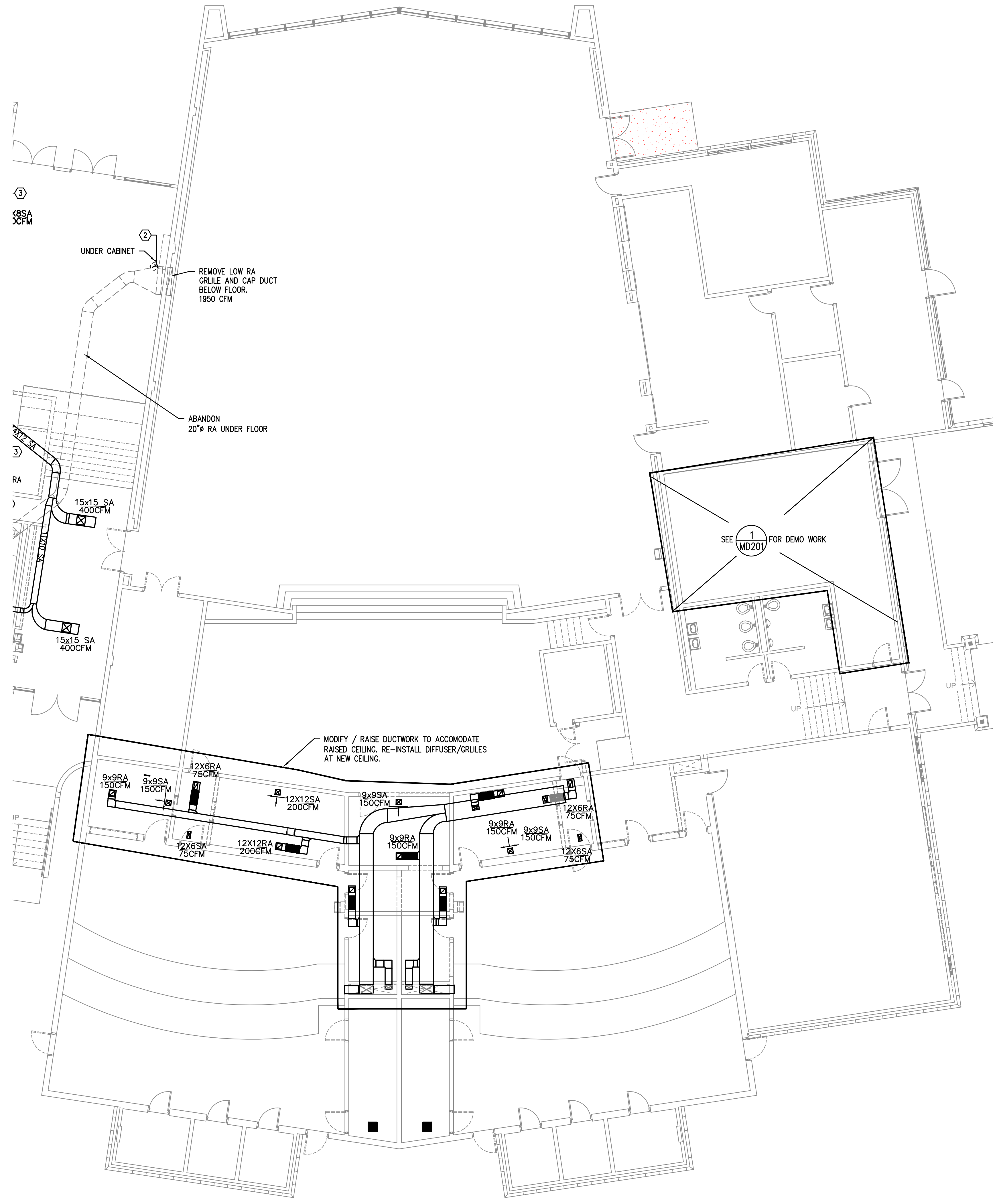
Revised Date: Project No. 17.34B

Stamp Sheet No.

MEDIA INC. Consulting Engineers
 2007 S.E. Ash St.
 Portland, OR 97214
 PH: (503) 254-0548
 FAX: (503) 234-0677
 CONTACT: TAKAKO BAKER

MD2.02

City Of Bend Approval Stamp:




1 MECHANICAL DEMO PLAN – BUILDING F
 MD2.03 SCALE: 1/8"=1'-0"

#	Date	Description

DESIGN DEVELOPMENT

PILOT BUTTE MIDDLE SCHOOL - BLDGS E&F
 Project Address

BLRB architects

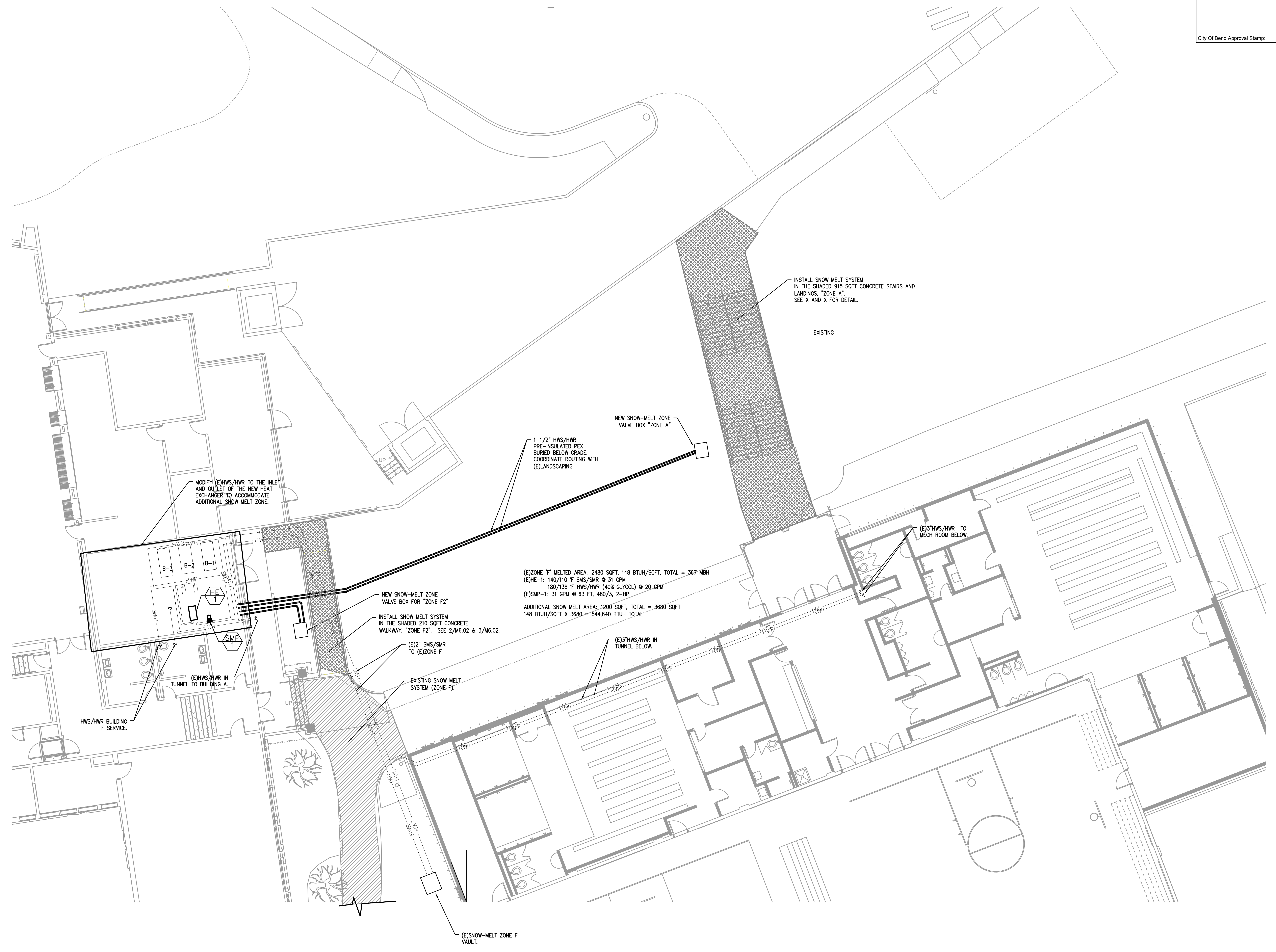
Drawing Title:
MECHANICAL DEMO PLAN - BUILDING F

Date :	11.11.2017	Drawn By :	INITIALS
Revised Date :		Project No. :	17.34B
Stamp :		Sheet No. :	

MD2.03

MEFA INC.
 Consulting Engineers
 2007 S.E. Ash St.
 Portland, OR 97214
 PHN: (503) 234-0548
 FAX: (503) 234-0677
 WWW.MEFA-ENG.COM
 CONTACT: TAKAKO BAKER

City Of Bend Approval Stamp:



MODIFY (E)HWS/HWR TO THE INLET AND OUTLET OF THE NEW HEAT EXCHANGER TO ACCOMMODATE ADDITIONAL SNOW MELT ZONE.

INSTALL SNOW MELT SYSTEM IN THE SHADED 915 SQFT CONCRETE STAIRS AND LANDINGS, "ZONE A". SEE X AND X FOR DETAIL.

EXISTING

NEW SNOW-MELT ZONE VALVE BOX "ZONE A"

1-1/2" HWS/HWR PRE-INSULATED PEX BURIED BELOW GRADE, COORDINATE ROUTING WITH (E)LANDSCAPING.

(E)13" HWS/HWR TO MECH ROOM BELOW.

(E)ZONE F MELTED AREA: 2480 SQFT, 148 BTUH/SQFT, TOTAL = 367 MBH
 (E)HE-1: 140/110 F SMS/SMR @ 31 GPM
 180/138 F HWS/HWR (40% GLYCOL) @ 20 GPM
 (E)SMP-1: 31 GPM @ 63 FT, 480/3, 2-HP
 ADDITIONAL SNOW MELT AREA: 1200 SQFT, TOTAL = 3680 SQFT
 148 BTUH/SQFT X 3680 = 544,640 BTUH TOTAL

NEW SNOW-MELT ZONE VALVE BOX FOR "ZONE F2"

INSTALL SNOW MELT SYSTEM IN THE SHADED 210 SQFT CONCRETE WALKWAY, "ZONE F2". SEE 2/M6.02 & 3/M6.02.

(E)2" SMS/SMR TO (E)ZONE F

(E)13" HWS/HWR IN TUNNEL BELOW.

EXISTING SNOW MELT SYSTEM (ZONE F).

(E)HWS/HWR IN TUNNEL TO BUILDING A.

HWS/HWR BUILDING F SERVICE.

(E)SNOW-MELT ZONE F VAULT.

#	Date	Description

DESIGN DEVELOPMENT

PILOT BUTTE MIDDLE SCHOOL - BLDGS E&F
Project Address

BLRB architects

Drawing Title:
MECHANICAL SNOWMELT SYSTEM

Date : 11.11.2017 Drawn By : INITIALS

Revised Date : Project No. 17.34B

Stamp Sheet No.

M2.01

1 SNOW-MELT/BUILDING A-VESTIBULE
M2.01 SCALE: 1/8"=1'-0"

META INC.
Consulting Engineers
2007 S.E. Ash St.
Portland, OR 97214
PH: (503) 234-0548
FAX: (503) 234-0677
WWW.META-ENG.COM
CONTACT: TAKAKO BAKER

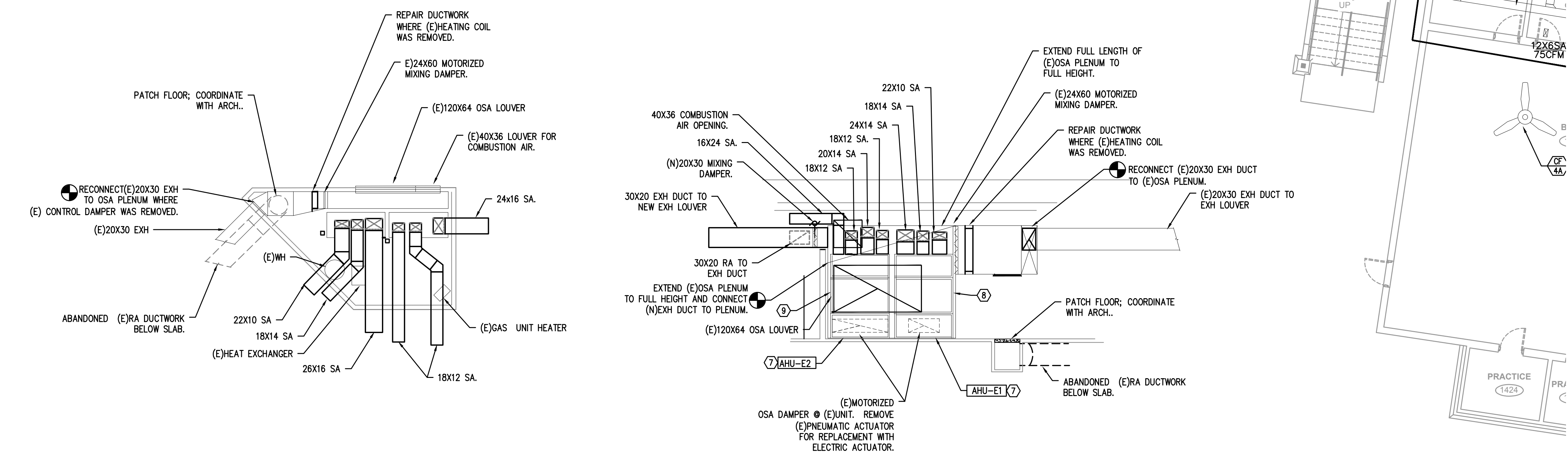
City Of Bend Approval Stamp:

- KEYED NOTES:**
- (C)18X18 RELIEF DUCT UP THRU ROOF TO NEW EXHAUST FAN ON ROOF.
 - BALANCE (E)GRILLE TO AIRFLOW SHOWN.
 - 16X4 RA IN WALL TO LOW RA GRILLE.
 - 12X4 RA IN WALL TO LOW RA GRILLE.
 - 18X12 RA IN CHASE TO LOW RA GRILLE.
 - 16X8 RA DN IN CHASE TO LOW RA GRILLE.
 - NEW EQUIPMENT TAG #
 - REPLACE (E)15-HP SUPPLY FAN MOTOR WITH A NEW INVERTOR RATED MOTOR. PROVIDE A NEW FAN CONTROL. SEE XXXXX FOR CONTROLS.
 - REPLACE (E)15-HP SUPPLY FAN MOTOR WITH A NEW INVERTOR RATED MOTOR. PROVIDE A NEW FAN CONTROL. SEE XXXXX FOR CONTROLS.
 - RE-BALANCE EXISTING EXHAUST FAN, "E-12"

- GENERAL NOTES:**
- WHERE EXISTING DUCTWORK PENETRATE 1-HR FIRE WALL A THE CORRIDOR, FIRE DAMPER IS NOT REQUIRED PER FIRE MARSHALL.
 - WHERE THE PENETRATION AT THE CORRIDOR WALL IS A THROUGH-PENETRATION, INSTALL MINIMUM OF X GA SHEETMETAL AND PROTECT OPENINGS PER ULI479, SEE DETAIL XX.



1 MECHANICAL FLOOR PLAN - BUILDING E
 SCALE: 1/8"=1'-0"



2 MECHANICAL ROOM DETAIL
 SCALE: 1/8"=1'-0"

#	Date	Description

DESIGN DEVELOPMENT

PILOT BUTTE MIDDLE SCHOOL - BLDGS E&F
 Project Address

BLRB architects

MECHANICAL FLOOR PLAN - BUILDING E

Date:	11.11.2017	Drawn By:	INITIALS
Revised Date:		Project No.:	17.34B
Stamp:		Sheet No.:	

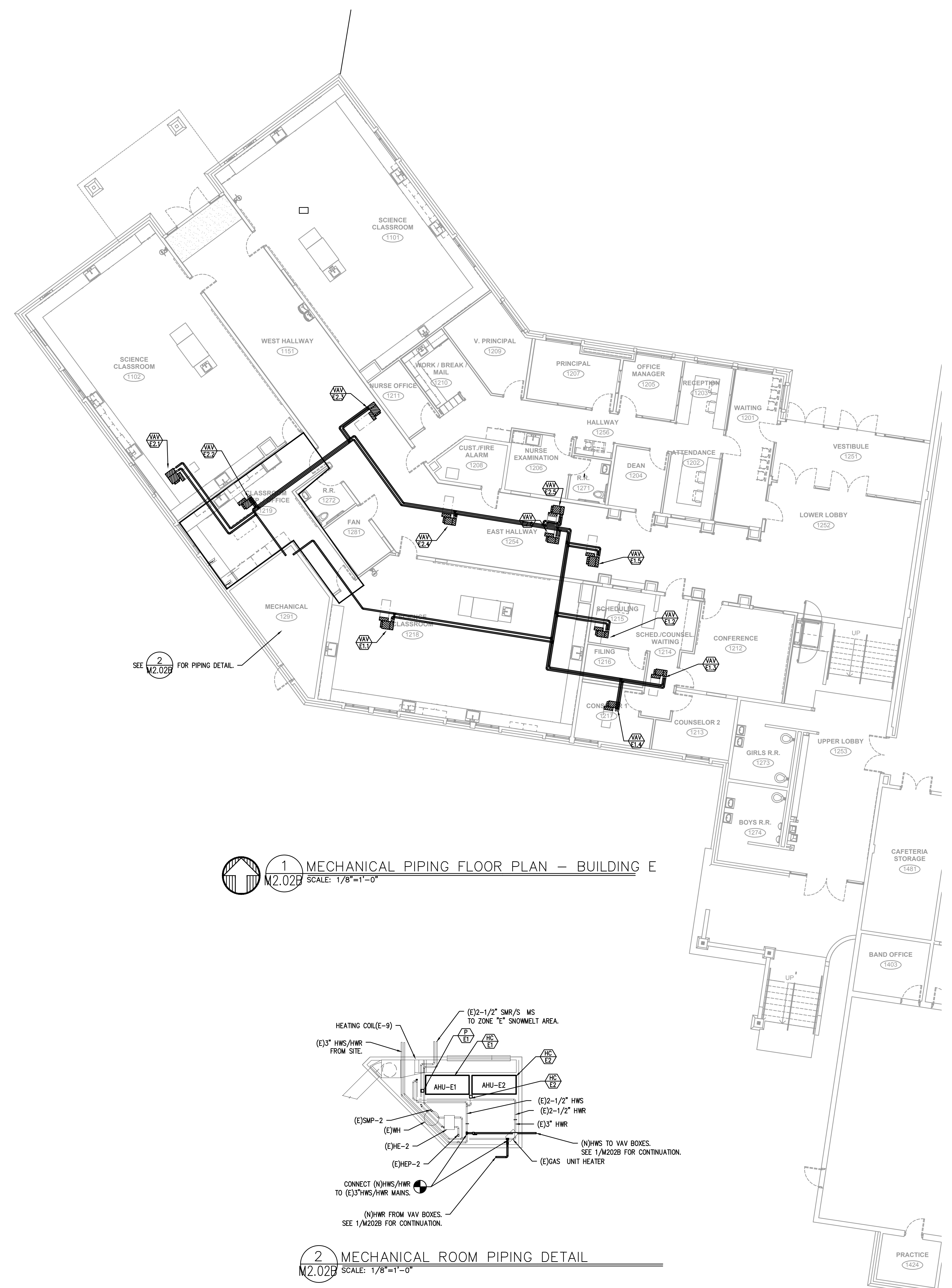
MFA INC. Consulting Engineers
 2007 S.E. Ash St.
 Portland, OR 97214
 PHN: (503) 234-0648
 FAX: (503) 234-0677
 WWW.MFA-ENG.COM
 CONTACT: TAKAHO BAKER

M2.02A

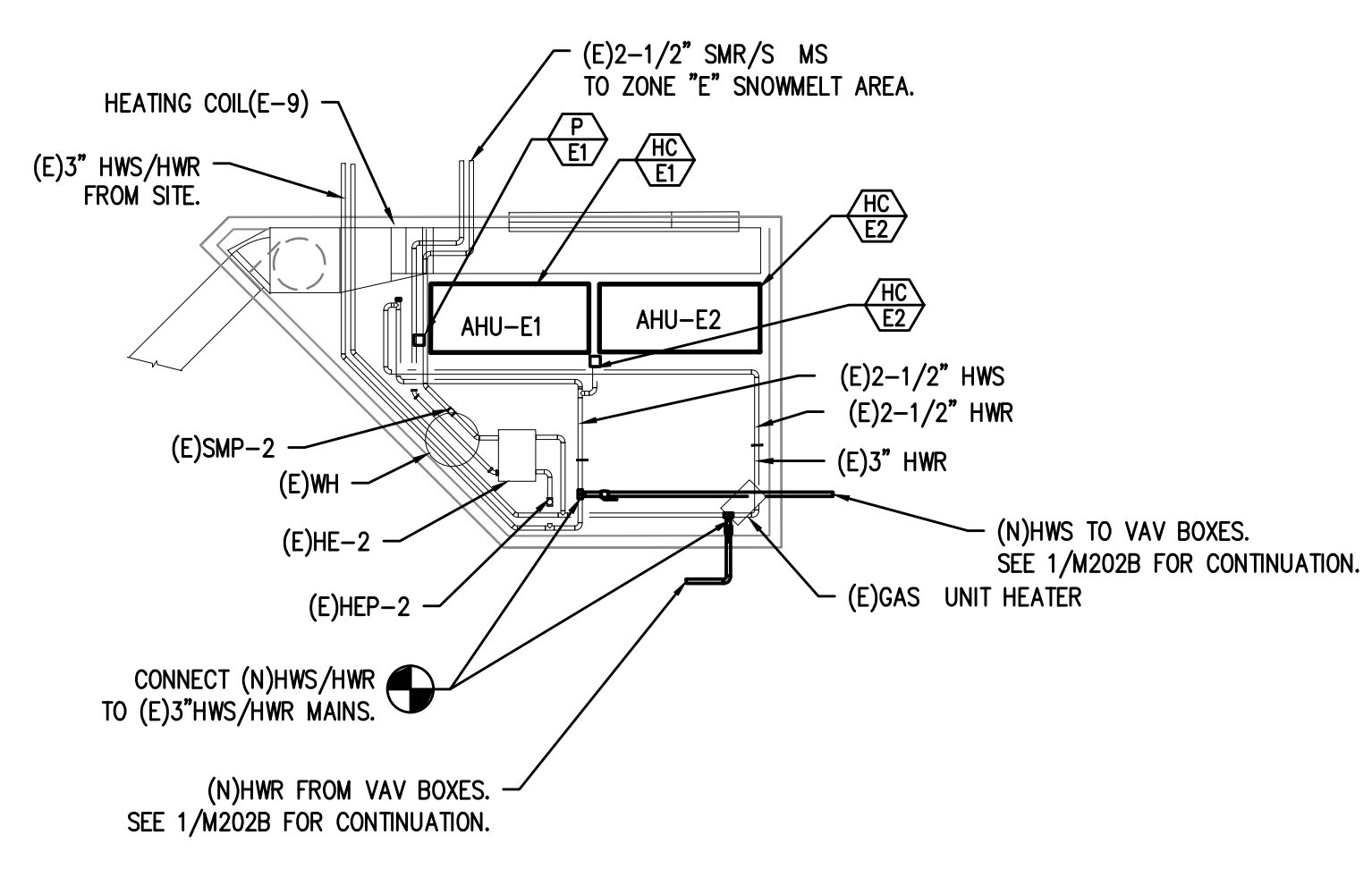
1 2 3 4 5 6

A
B
C
D
E
F
G
H
J
K

City Of Bend Approval Stamp:



1 MECHANICAL PIPING FLOOR PLAN — BUILDING E
 M2.02B SCALE: 1/8"=1'-0"



2 MECHANICAL ROOM PIPING DETAIL
 M2.02B SCALE: 1/8"=1'-0"

#	Date	Description
Revision Schedule		

DESIGN DEVELOPMENT

PILOT BUTTE MIDDLE SCHOOL - BLDGS E&F
 Project Address

BLRB architects

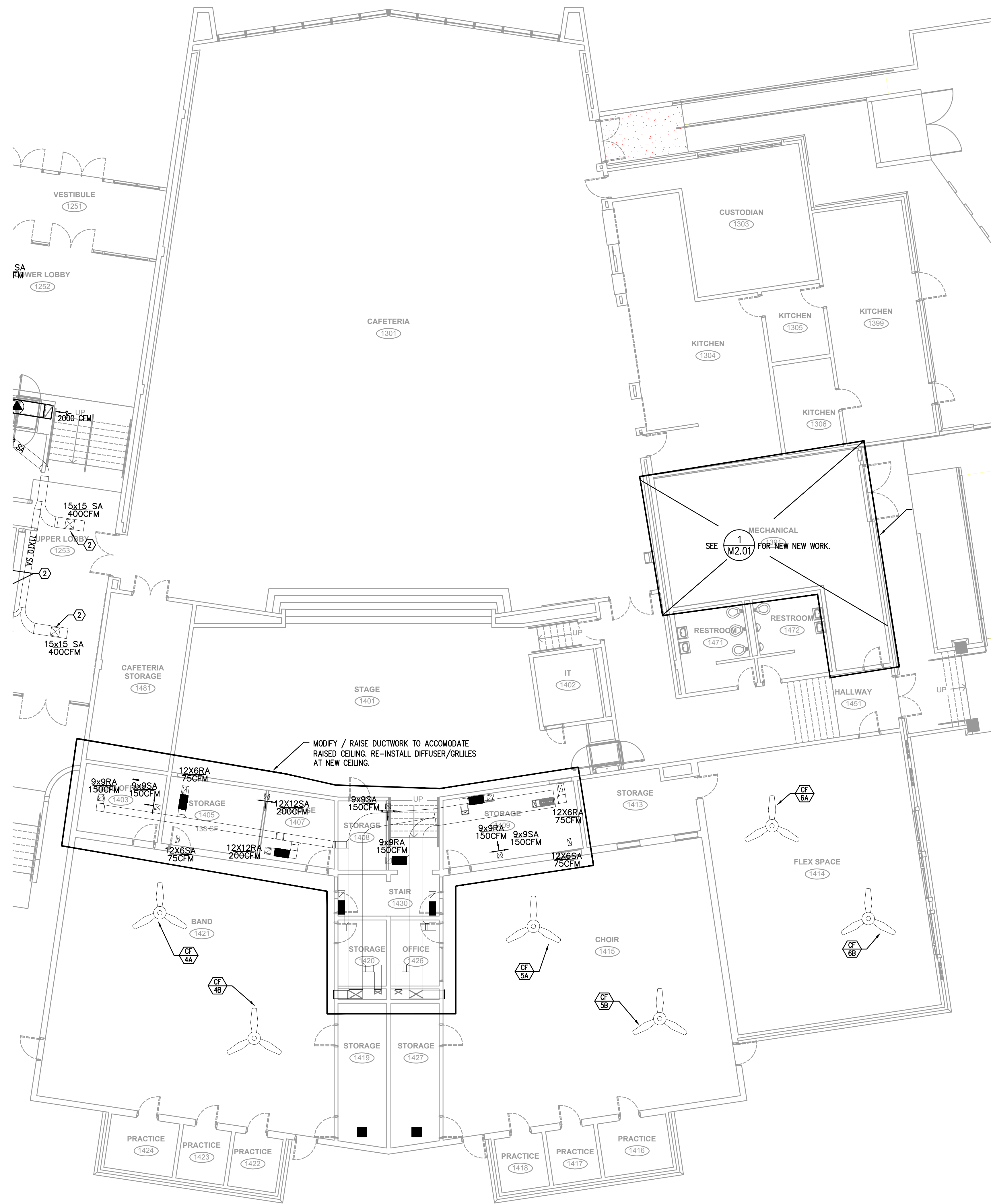
Drawing Title:
MECHANICAL PIPING PLAN - BUILDING E

Date :	11.11.2017	Drawn By :	INITIALS
Revised Date :		Project No. :	17.34B

Stamp	Sheet No.
	M2.02B

M E I A I N C
 Consulting Engineers
 2007 S.E. Ash St.
 Portland, OR 97214
 PH: (503) 234-0548
 FAX: (503) 234-0877
 WWW.MEIA-ENG.COM
 CONTACT: TAKAKO BAKER

City Of Bend Approval Stamp:




1 MECHANICAL FLOOR PLAN – BUILDINGS F
M2.03 SCALE: 1/8"=1'-0"

#	Date	Description

DESIGN DEVELOPMENT

PILOT BUTTE MIDDLE SCHOOL - BLDGS E&F

Project Address

BLRB architects

Drawing Title:

MECHANICAL FLOOR PLAN - BUILDG F

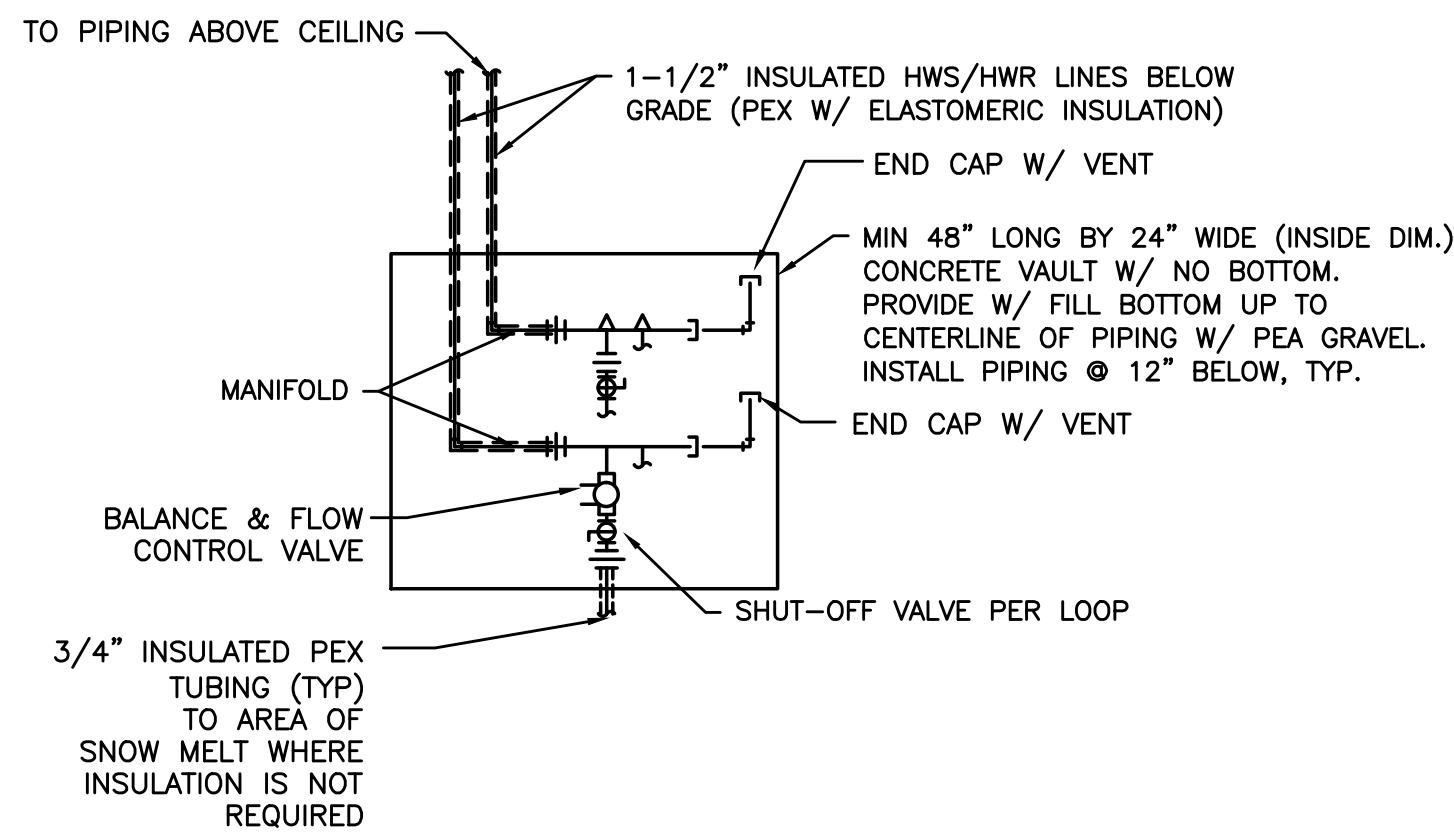
Date : 11.11.2017 Drawn By : INITIALS

Revised Date : Project No. 17.34B

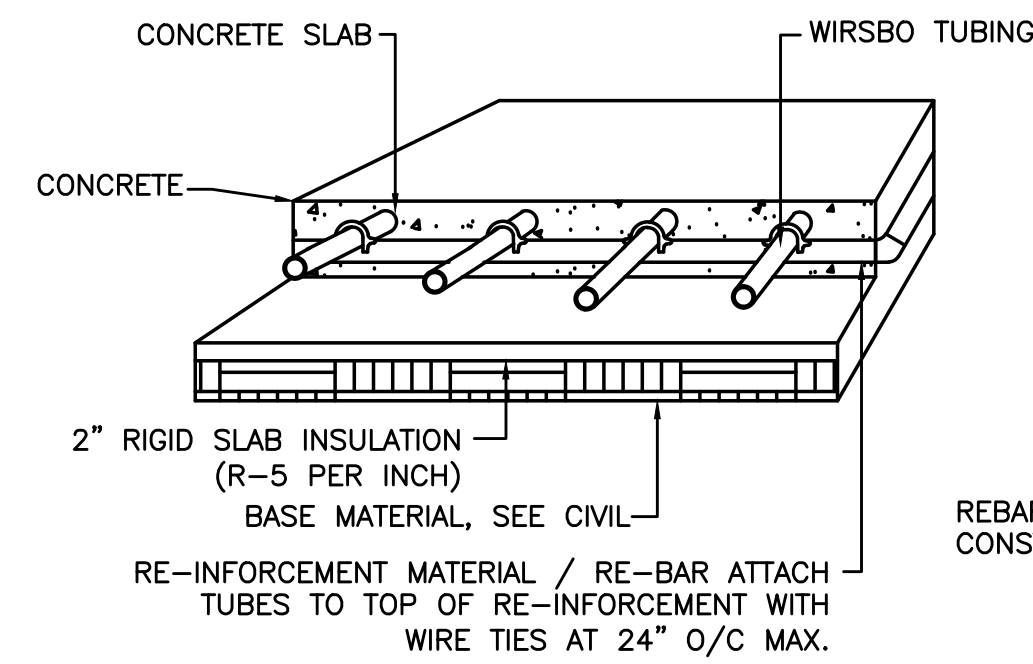
Stamp Sheet No.

META INC.
 Consulting Engineers
 2007 S.E. Ash St.
 Portland, OR 97214
 PHN: (503) 234-0548
 FAX: (503) 234-0877
 WWW.META-ENG.COM
 CONTACT: TAKAKO BAKER

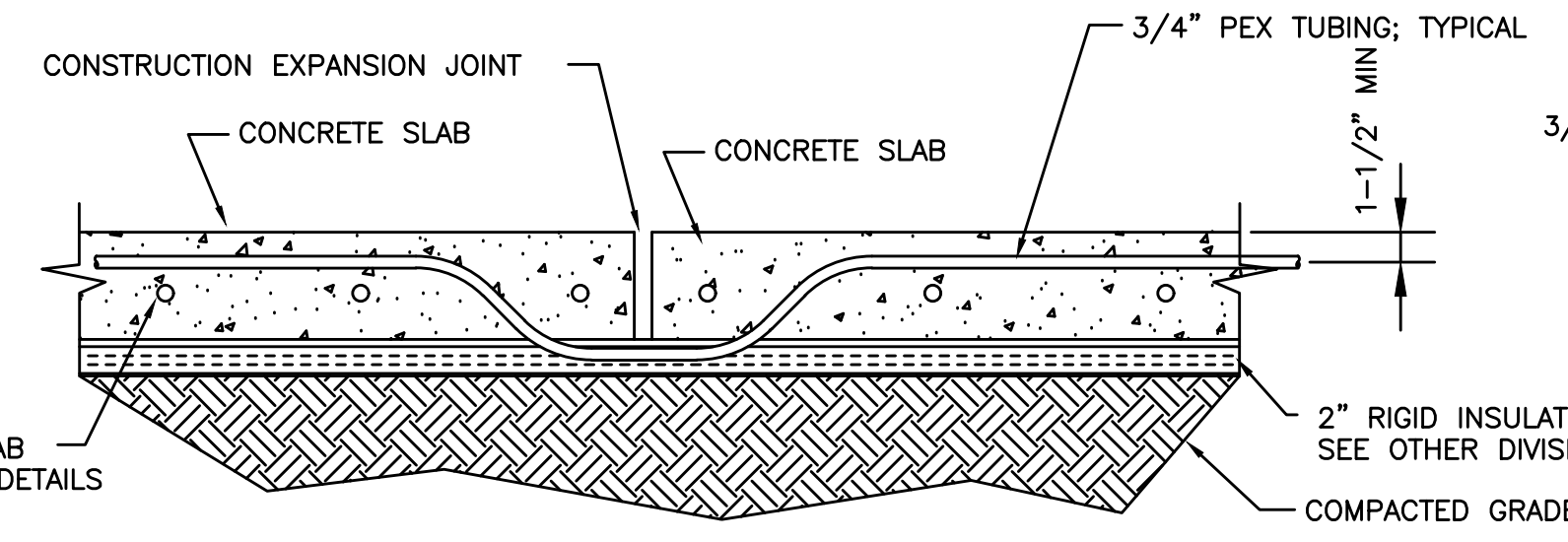
M2.03



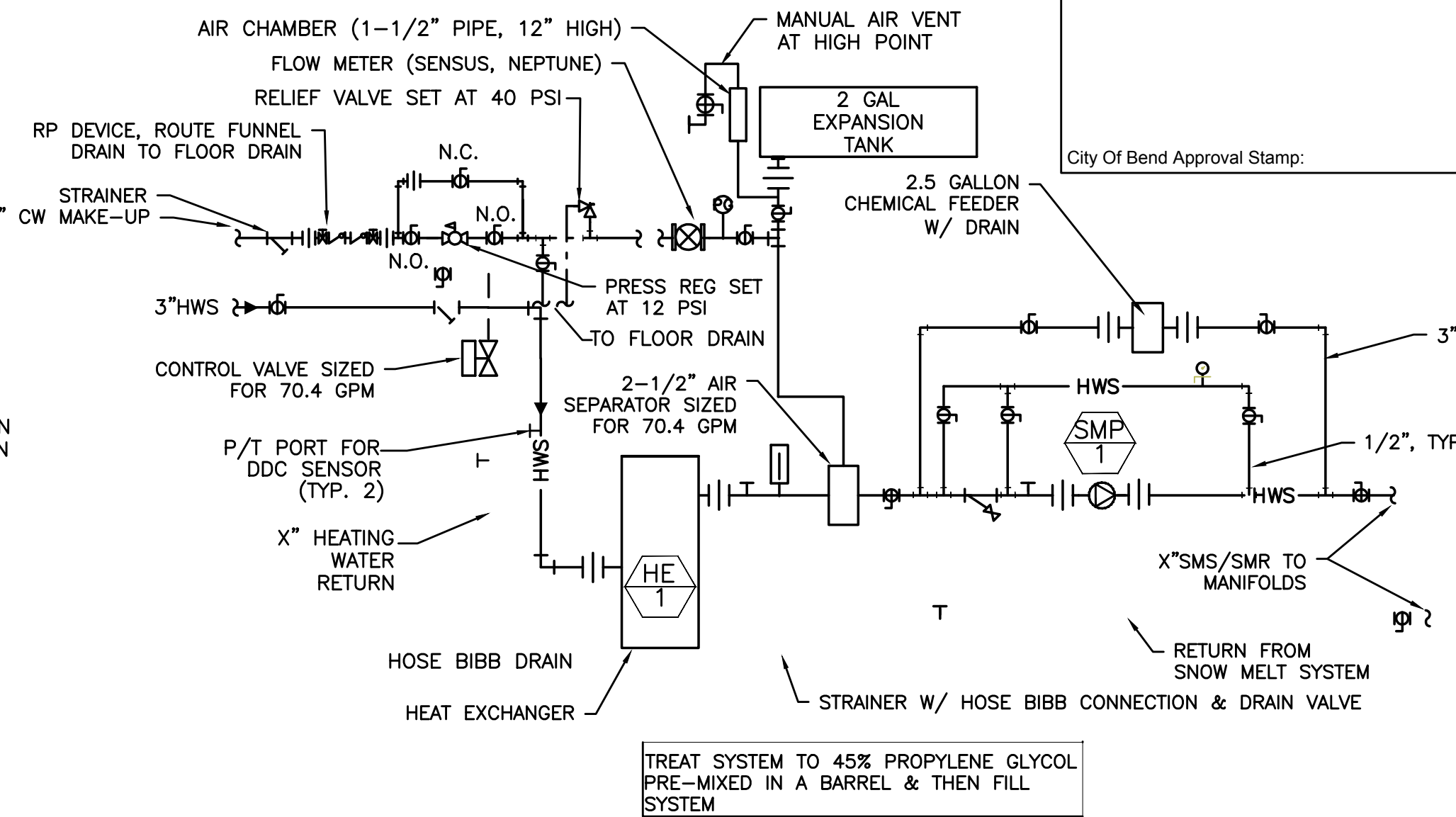
1 SNOW MELT MANIFOLD
SCALE: DETAIL



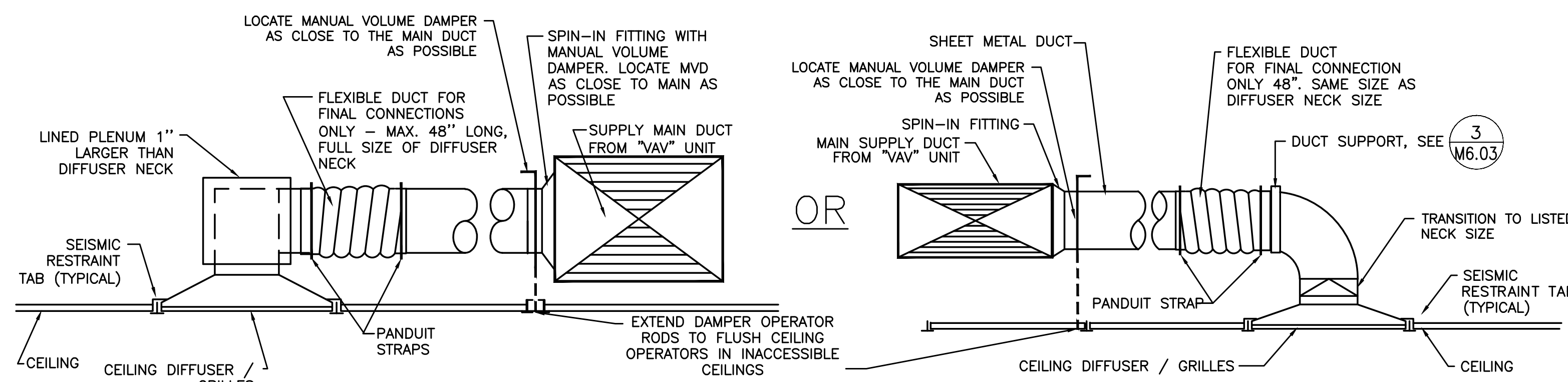
2 SNOW MELT UNDERSLAB PIPING DETAIL
SCALE: DETAIL



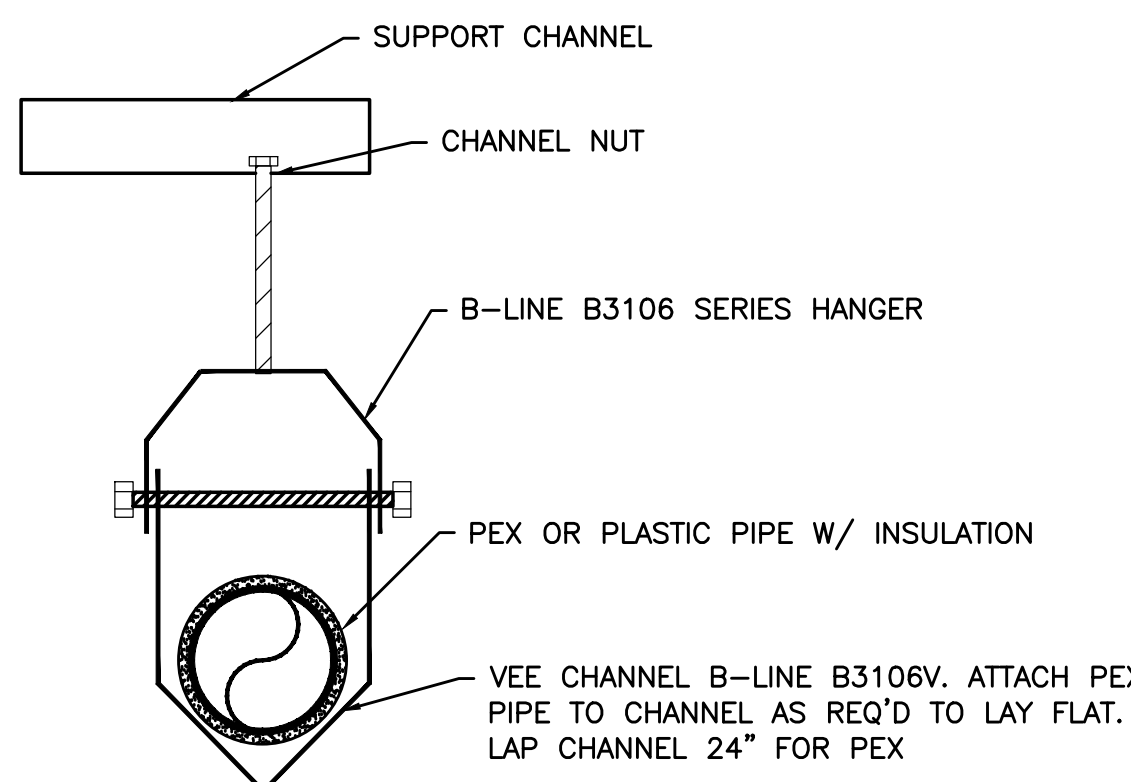
3 SNOW MELT @ EXPANSION JOINT
SCALE: DETAIL



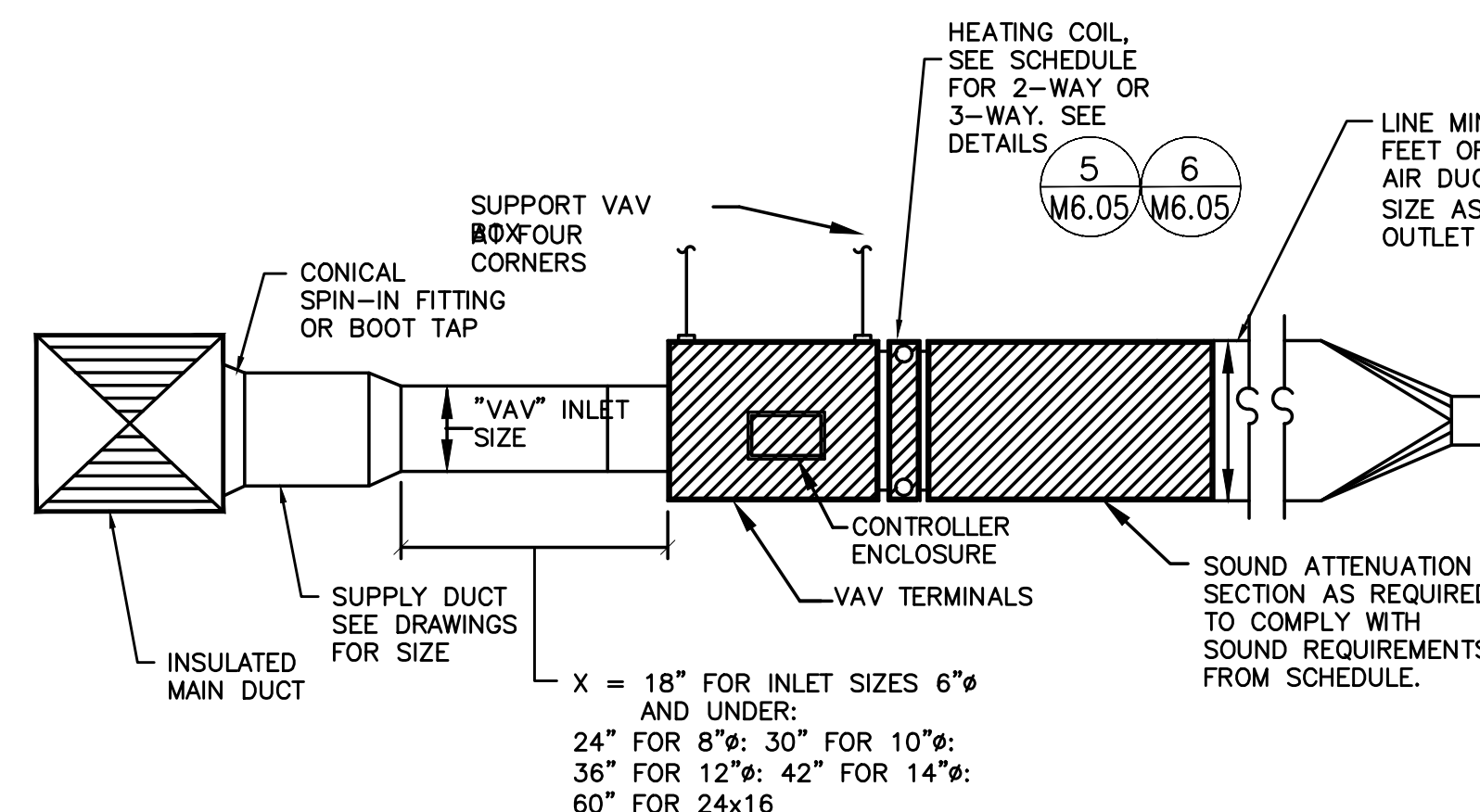
4 HEAT EXCHANGER PIPING DIAGRAM FOR SNOWMELT SYSTEM
SCALE: DETAIL



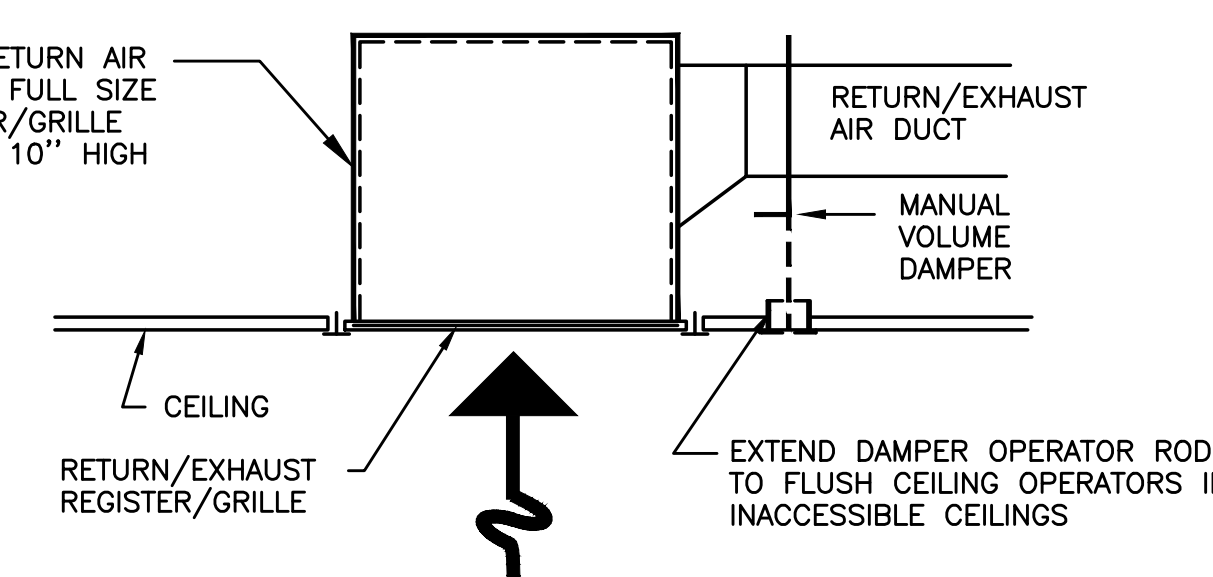
5 SUPPLY AIR DIFFUSER/GRILLE
SCALE: DETAIL



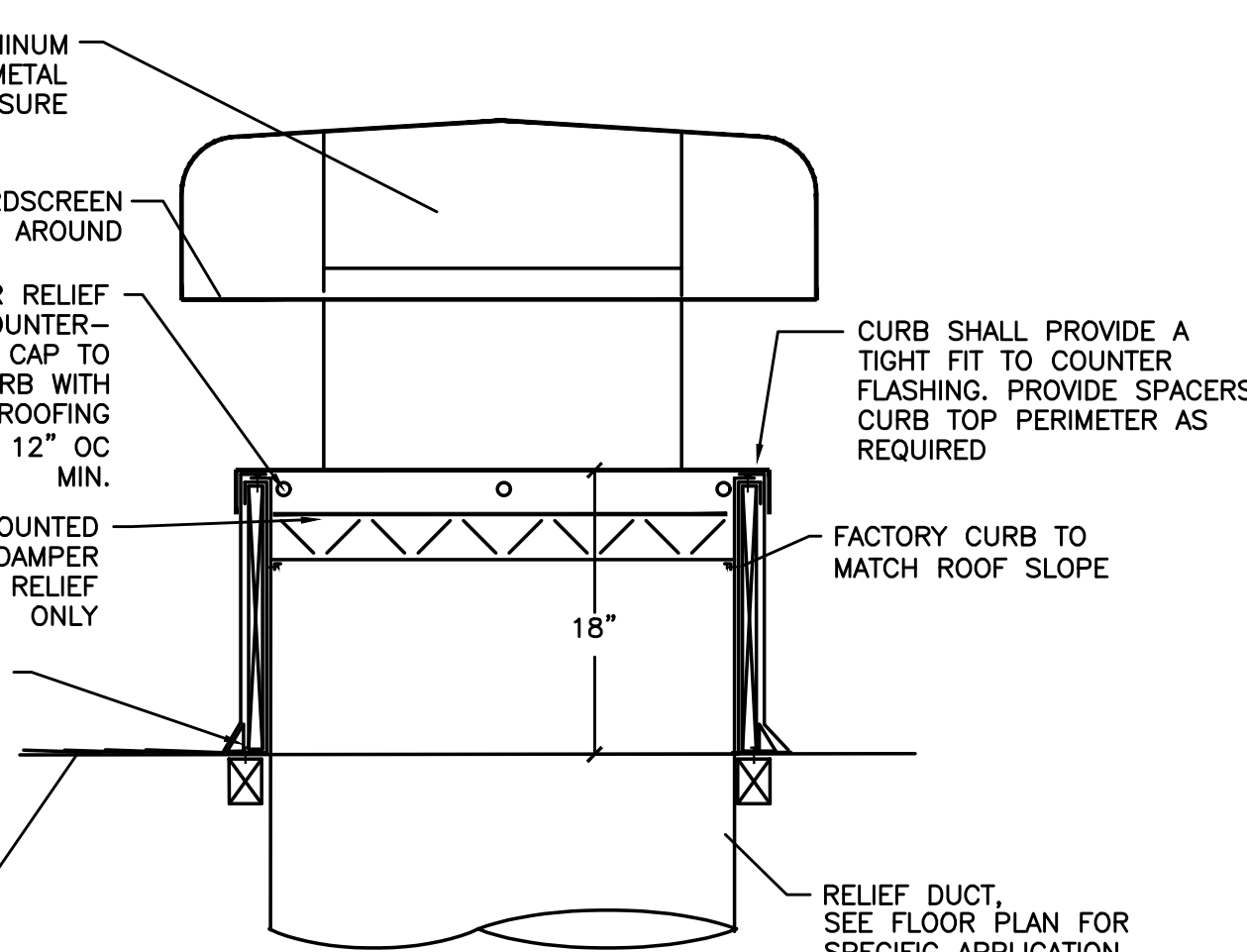
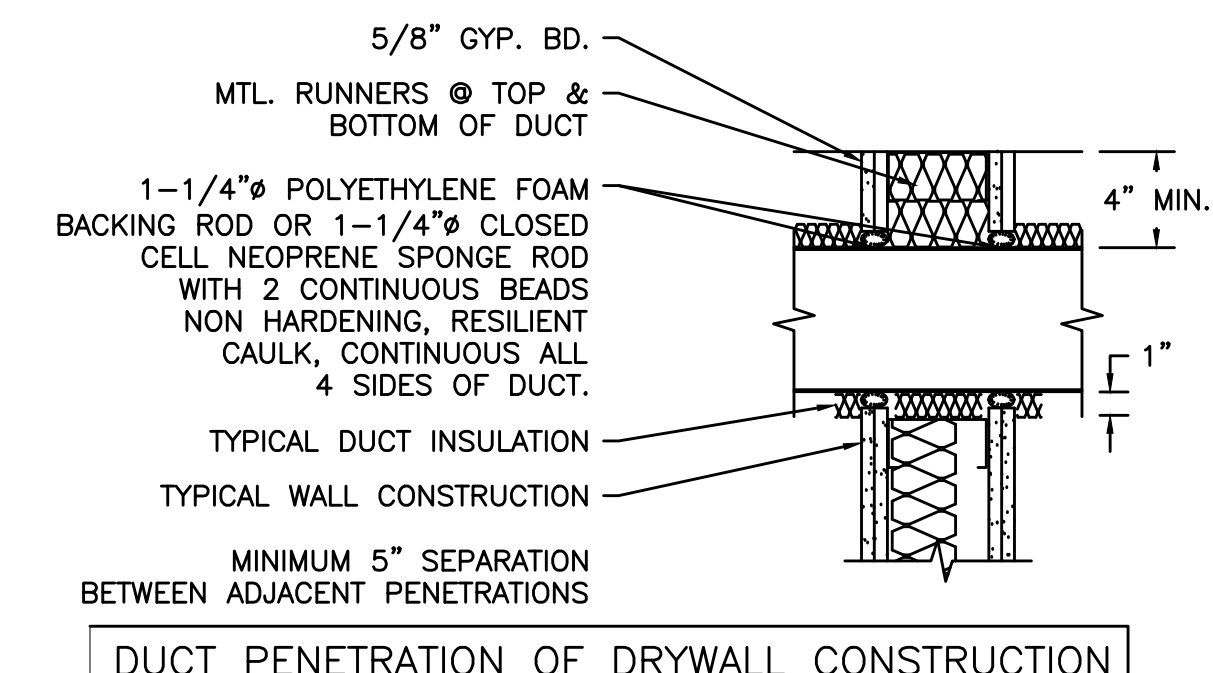
6 PEX SUPPORT DETAIL
SCALE: DETAIL



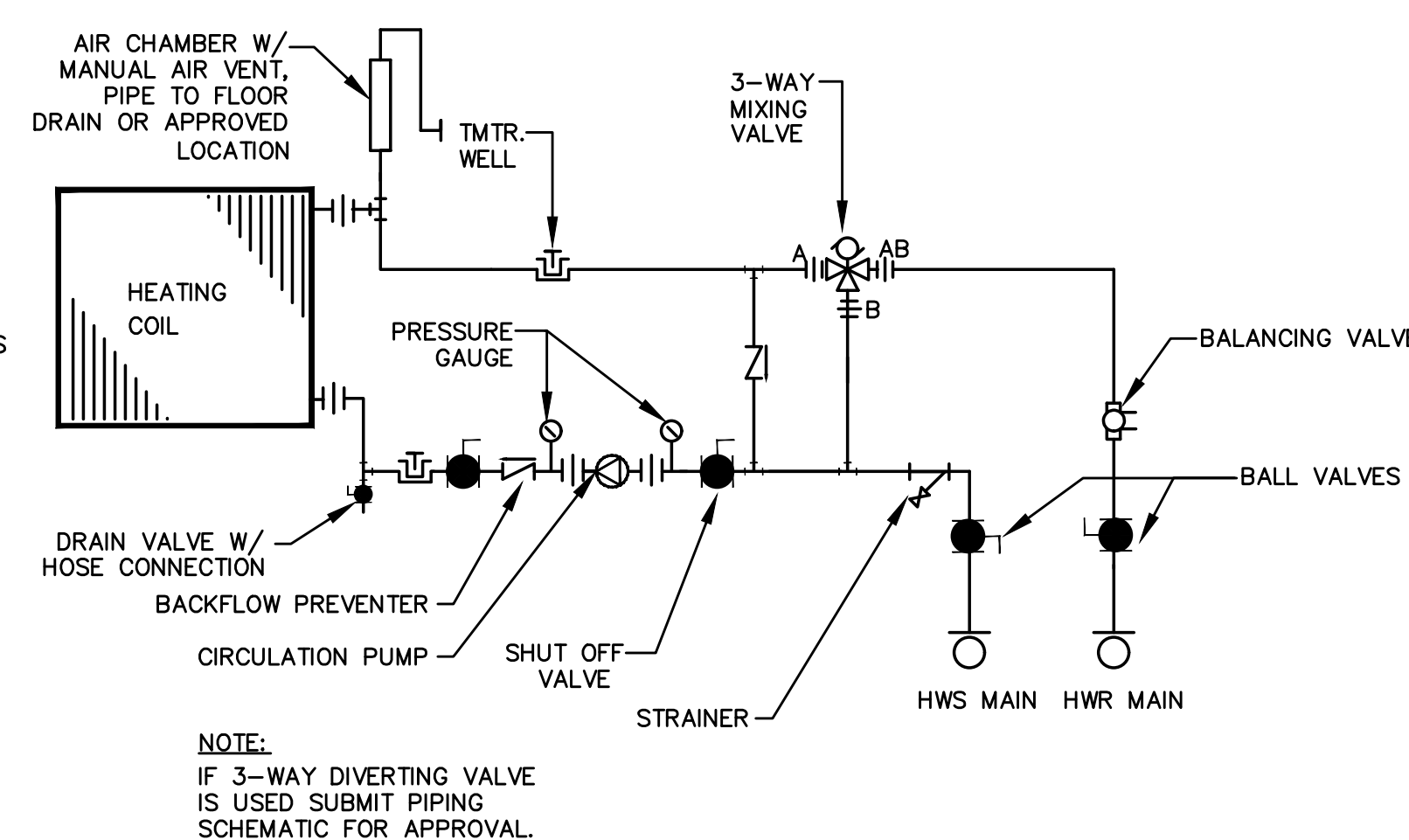
7 TYPICAL VAV BOX DETAIL
SCALE: DETAIL



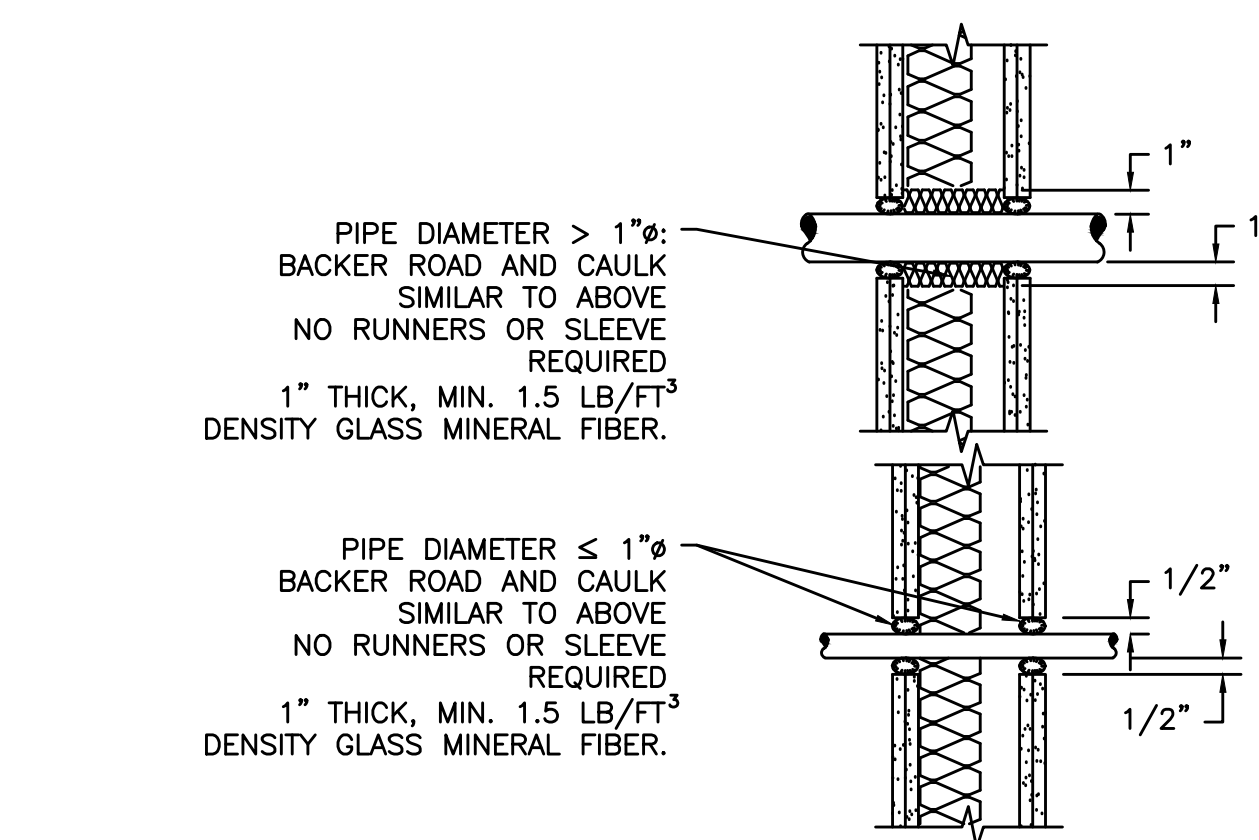
8 RETURN AIR DIFFUSER/GRILLE
SCALE: DETAIL



9 RELIEF HEAD
SCALE: DETAIL



10 PREEHEAT COIL - THREE WAY NON-FREEZE
SCALE: DETAIL



11 ACCOUSTICAL DUCT PENETRATION
SCALE: DETAIL

#	Date	Description
Revision Schedule		

DESIGN DEVELOPMENT

PILOT BUTTE MIDDLE SCHOOL - BLDGS E&F
Project Address

BLRB architects

Drawing Title:

MECHANICAL DETAILS

Date: 11.11.2017 Drawn By: INITIALS

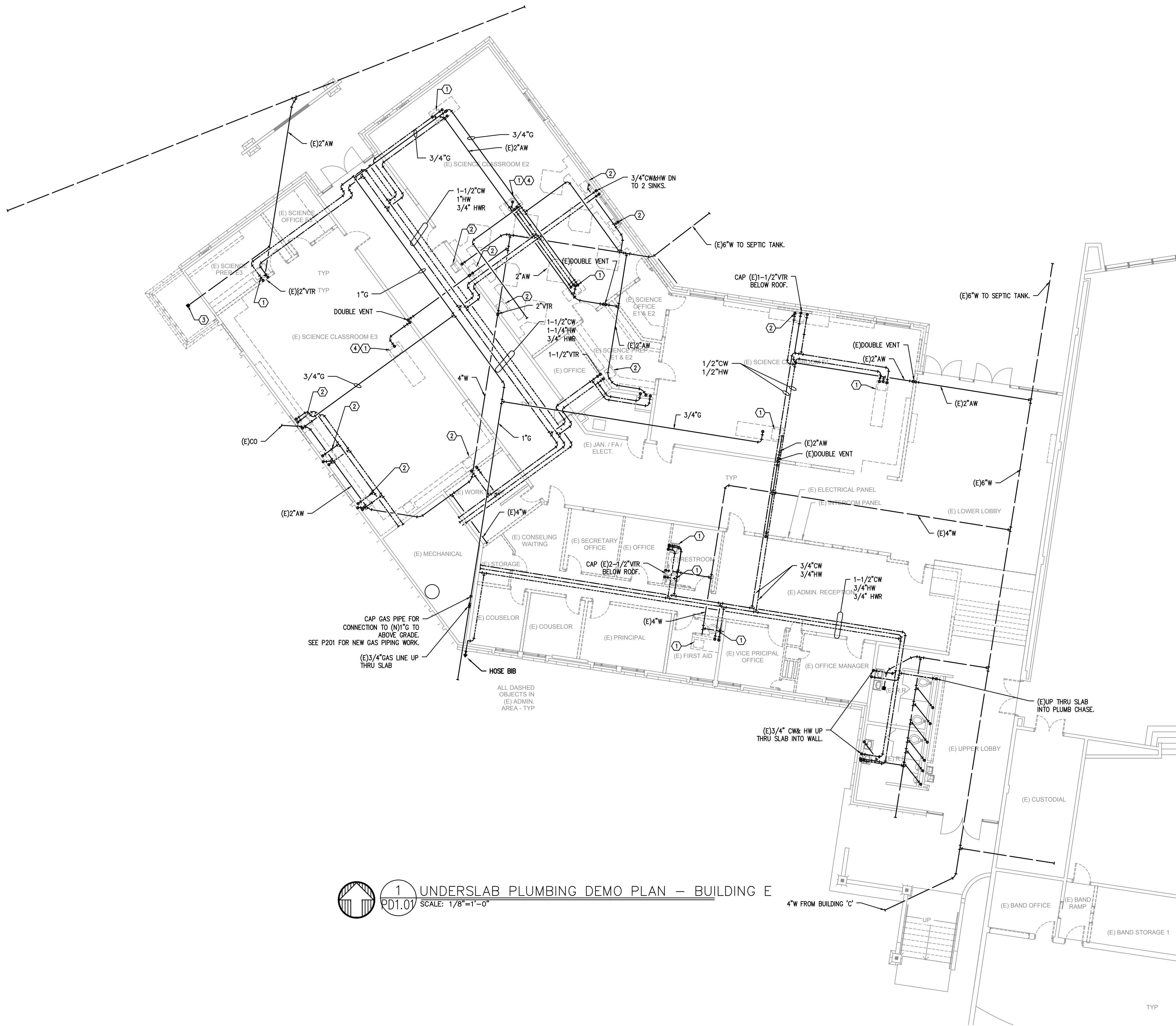
Revised Date: Project No. 17.34B

Stamp Sheet No.

M6.02

- KEYED NOTES:**
1. REMOVE PLUMBING FIXTURE. CAP OFF WASTE BELOW FLOOR.
 2. REMOVE PLUMBING FIXTURE. CAP OFF WASTE IN WALL.
 3. REMOVE (E)FLOOR DRAIN. PROVIDE NEW CLEAN-OUT AT END OF LINE.
- GENERAL NOTES:**
1. ABANDON ALL UNDERSLAB CW, HW, HWR AND GAS PIPING UNDERSLAB IN PLACE AND DEMO ALL GALVANIZED DOMESTIC WATER PIPING ABOVE GRADE FOR REPLACEMENT WITH NEW COPPER OR PEX LINES.

City Of Bend Approval Stamp:



1 UNDERSLAB PLUMBING DEMO PLAN - BUILDING E
 PD1.01 SCALE: 1/8" = 1'-0"

#	Date	Description

DESIGN DEVELOPMENT

PILOT BUTTE MIDDLE SCHOOL - BLDGS E&F

Project Address

BLRB architects

Drawing Title:
UNDERSLAB PLUMBING DEMO PLAN - BUILDING E

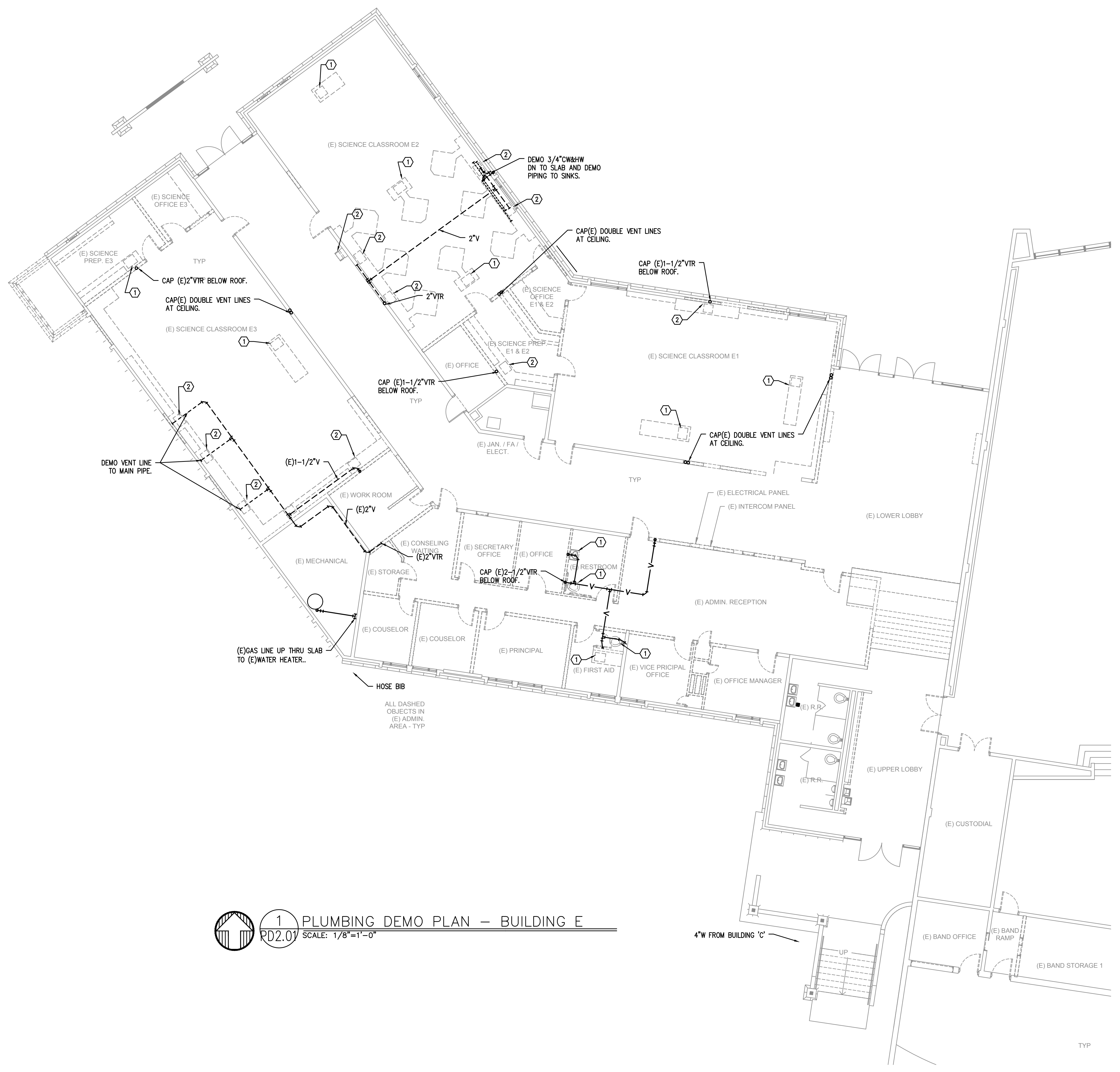
Date:	11.11.2017	Drawn By:	INITIALS
Revised Date:		Project No.:	17.34B
Stamp:		Sheet No.:	

M
E
I
A
INC. Consulting Engineers
 2007 S.E. Ash St.
 Portland, OR 97214
 PHN: (503) 234-0648
 FAX: (503) 234-0677
 WWW.MPIA-ENG.COM
 CONTACT: TAKAKO BAKER

PD1.01

City Of Bend Approval Stamp:

- KEYED NOTES:**
1. REMOVE PLUMBING FIXTURE, DEMO CW & HW LINES AND ABANDON PIPES TO BELOW SLAB. ALL PIPING BEYOND TO BE ABANDONED IN PLACE.
 2. REMOVE PLUMBING FIXTURE, DEMO CW&HW PIPE TO WALL. ALL PIPING BEYOND TO BE ABANDONED IN PLACE.



 **1** PLUMBING DEMO PLAN – BUILDING E
 PD2.01 SCALE: 1/8"=1'-0"

#	Date	Description
Revision Schedule		

DESIGN DEVELOPMENT

PILOT BUTTE MIDDLE SCHOOL - BLDGS E&F
 Project Address

BLRB architects

Drawing Title:

PLUMBING DEMO PLAN - BUILDING E

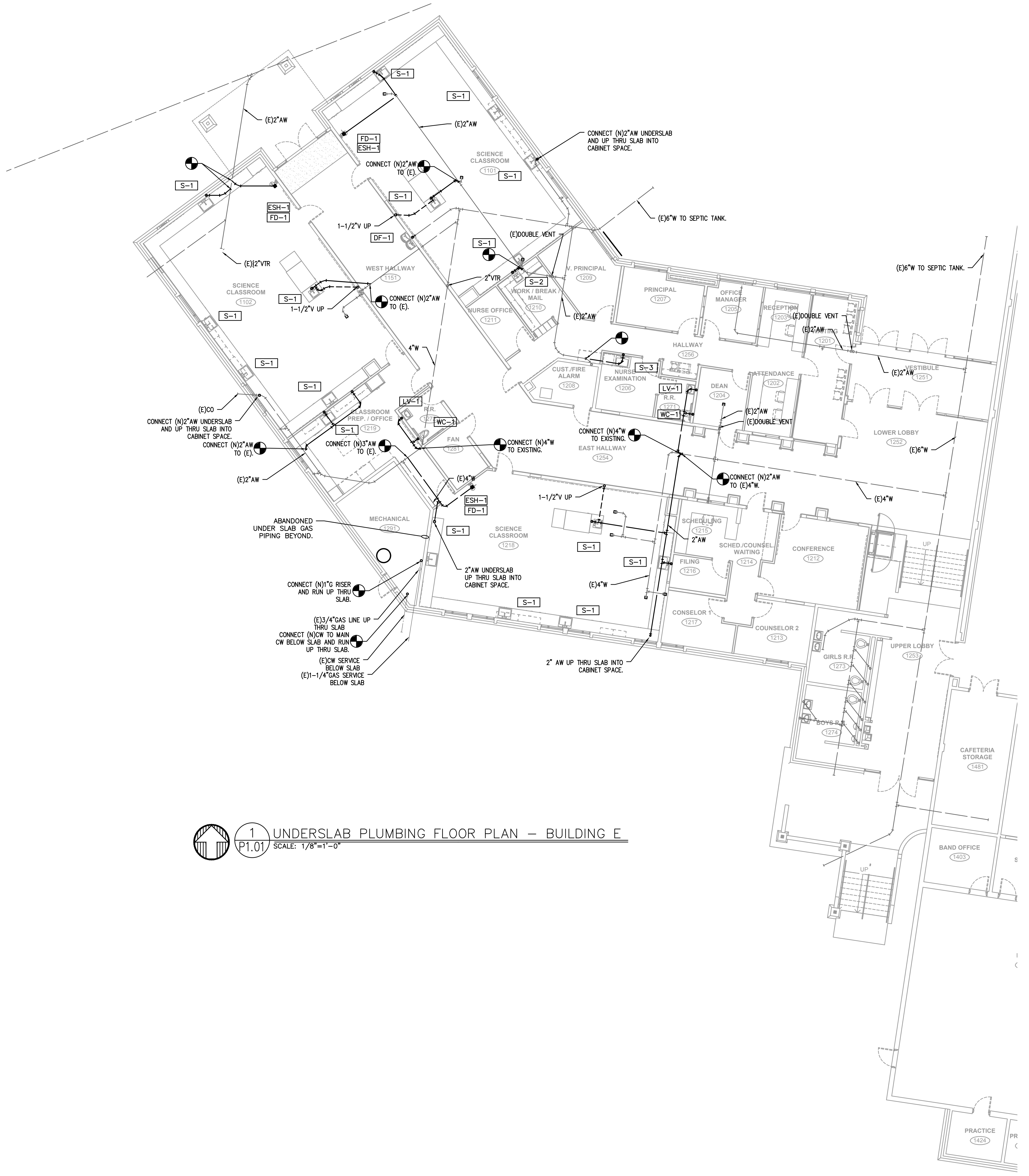
Date:	11.11.2017	Drawn By:	INITIALS
Revised Date:		Project No.:	17.34B

Stamp:	Sheet No.:
--------	------------

M E A
 Consulting Engineers
 2007 S.E. Ash St.
 Portland, OR 97214
 PHN: (503) 234-0548
 FAX: (503) 234-0677
 WWW.MEAI-ENG.COM
 CONTACT: TAKAKO BAKER

PD2.01

City Of Bend Approval Stamp:



 1 UNDERSLAB PLUMBING FLOOR PLAN – BUILDING E
P1.01 SCALE: 1/8"=1'-0"

#	Date	Description
Revision Schedule		

DESIGN DEVELOPMENT

PILOT BUTTE MIDDLE SCHOOL - BLDGS E&F
Project Address

BLRB architects

Drawing Title:
UNDERSLAB PLUMBING FLOOR PLAN - BUILDING E

Date :	11.11.2017	Drawn By :	INITIALS
Revised Date :		Project No. :	17.34B

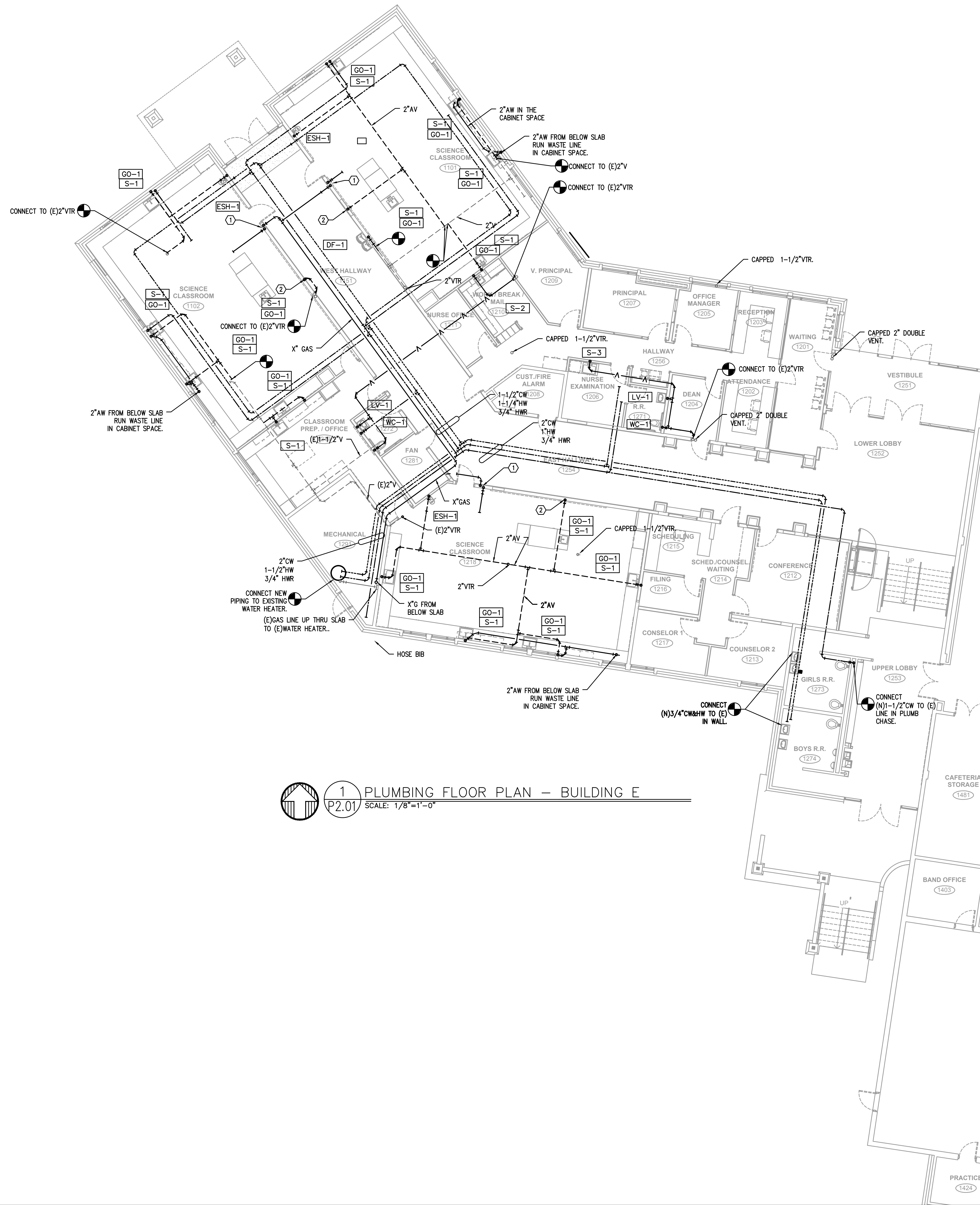
Stamp	Sheet No.
-------	-----------

M
FI
A
INC.
Consulting Engineers
2007 S.E. Ash St.
Portland, OR 97214
PH: (503) 234-0548
FAX: (503) 234-0877
WWW.MFIA-ENG.COM
CONTACT: TAKAKO BAKER

P1.01

- KEYED NOTES:
 1. SCIENCE CLASSROOM EMERGENCY GAS SHUT-OFF. SEE XXXXX.
 2. 1-1/2"V FROM BELOW SLAB.

City Of Bend Approval Stamp:



1 PLUMBING FLOOR PLAN - BUILDING E
 P2.01 SCALE: 1/8"=1'-0"

#	Date	Description

DESIGN DEVELOPMENT

PILOT BUTTE MIDDLE SCHOOL - BLDGS E&F
 Project Address

BLRB architects

Drawing Title:
PLUMBING FLOOR PLAN - BUILDING E

Date :	11.11.2017	Drawn By :	INITIALS
Revised Date :		Project No. :	17.34B
Stamp :		Sheet No. :	

M Consulting Engineers
 2007 S.E. Ash St.
 Portland, OR 97214
 PHN: (503) 234-0548
 FAX: (503) 234-0877
 INC. WWW.MPTA-ENG.COM
 CONTACT: TAKAKO BAKER

P2.01

