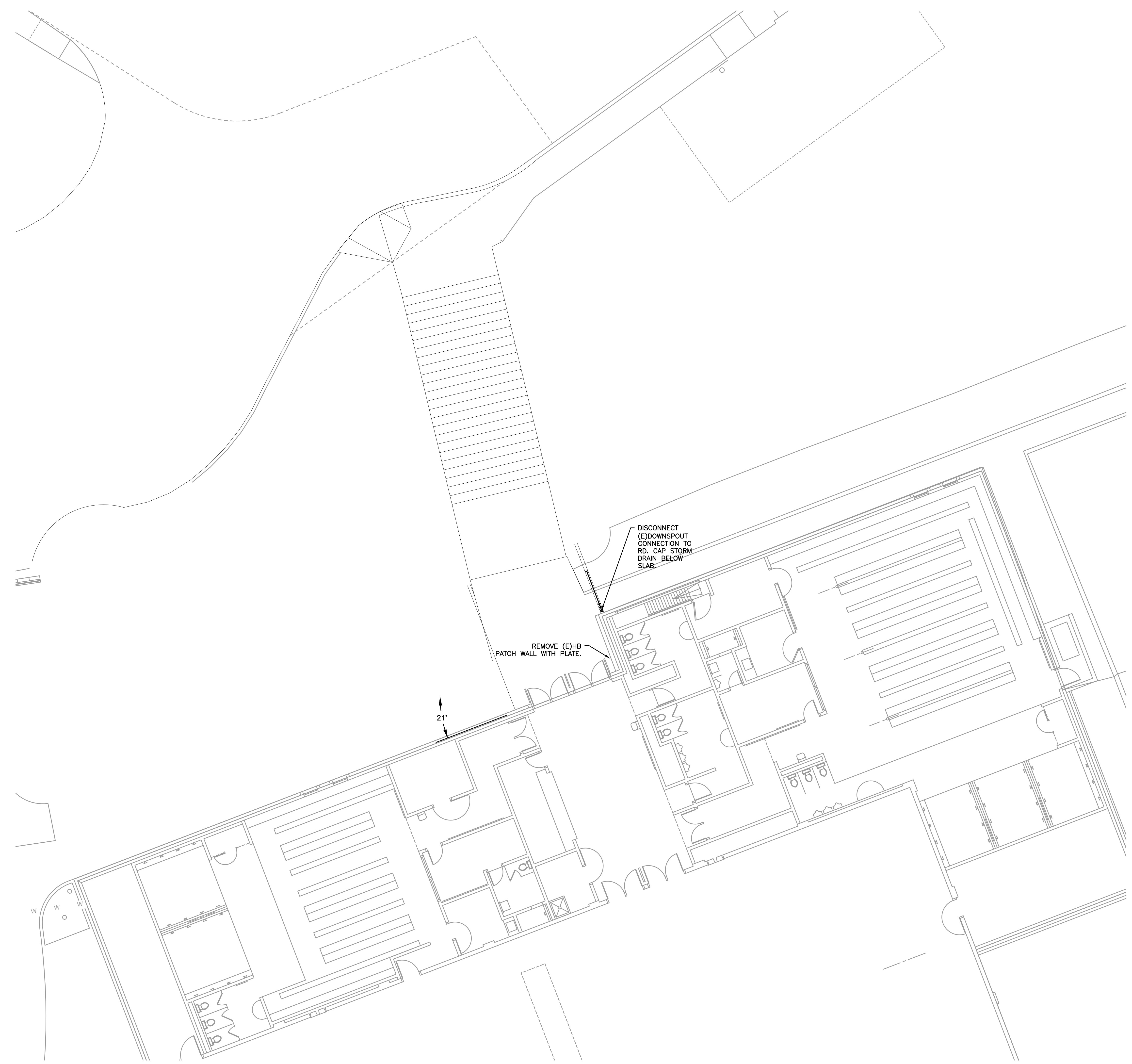


City Of Bend Approval Stamp:



#	Date	Description

DESIGN DEVELOPMENT

PILOT BUTTE MIDDLE SCHOOL - BUILDING A
Project Address

BLRB architects

Drawing Title:
PLUMBING DEMO PLAN- BUILDING A

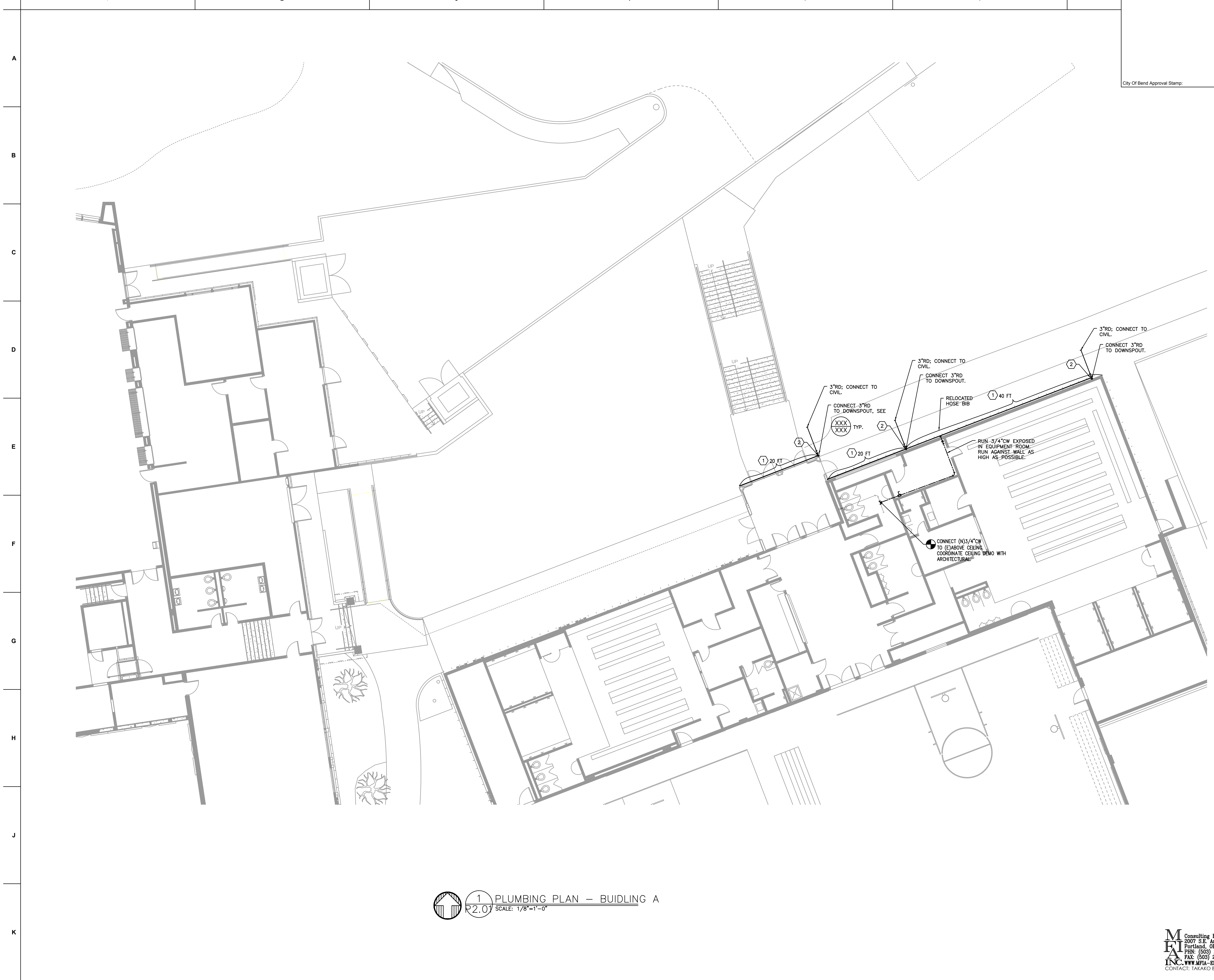
Date :	11.11.2017	Drawn By :	INITIALS
Revised Date :		Project No. :	17.34B

Stamp	Sheet No.
-------	-----------

 **1 PLUMBING DEMO PLAN — BUILDING A**
 PD2.01 SCALE: 1/8"=1'-0"

M
E
A
INC.
 Consulting Engineers
 2007 S.E. Ash St.
 Portland, OR 97214
 PHN: (503) 234-0548
 FAX: (503) 234-0677
 CONTACT: TAKAKO BAKER

PD2.01



KEYED NOTES:
 1. PROVIDE SELF-REGULATING ICE MELT CABLE IN THE GUTTER.
 2. PROVIDE SELF-REGULATING ICE MELT CABLE IN THE DOWNSPOUT. APPROX. LENGTH = 20 FT.

A
B
C
D
E
F
G
H
J
K

1 2 3 4 5 6

#	Date	Description
Revision Schedule		

DESIGN DEVELOPMENT

PILOT BUTTE MIDDLE SCHOOL - BUILDING A
 Project Address

BLRB architects

Drawing Title:

PLUMBING PLAN - BUILDING A

Date: 11.11.2017 Drawn By: INITIALS

Revised Date: Project No. 17.34B

Stamp Sheet No.

1 PLUMBING PLAN - BUILDING A
 P2.01 SCALE: 1/8"=1'-0"

M Consulting Engineers
 2007 S.E. Ash St.
 Portland, OR 97214
FI PH: (503) 234-0548
A FAX: (503) 234-0877
INC. WWW.MFIA-ENG.COM
 CONTACT: YAKAKO BAKER

P2.01

