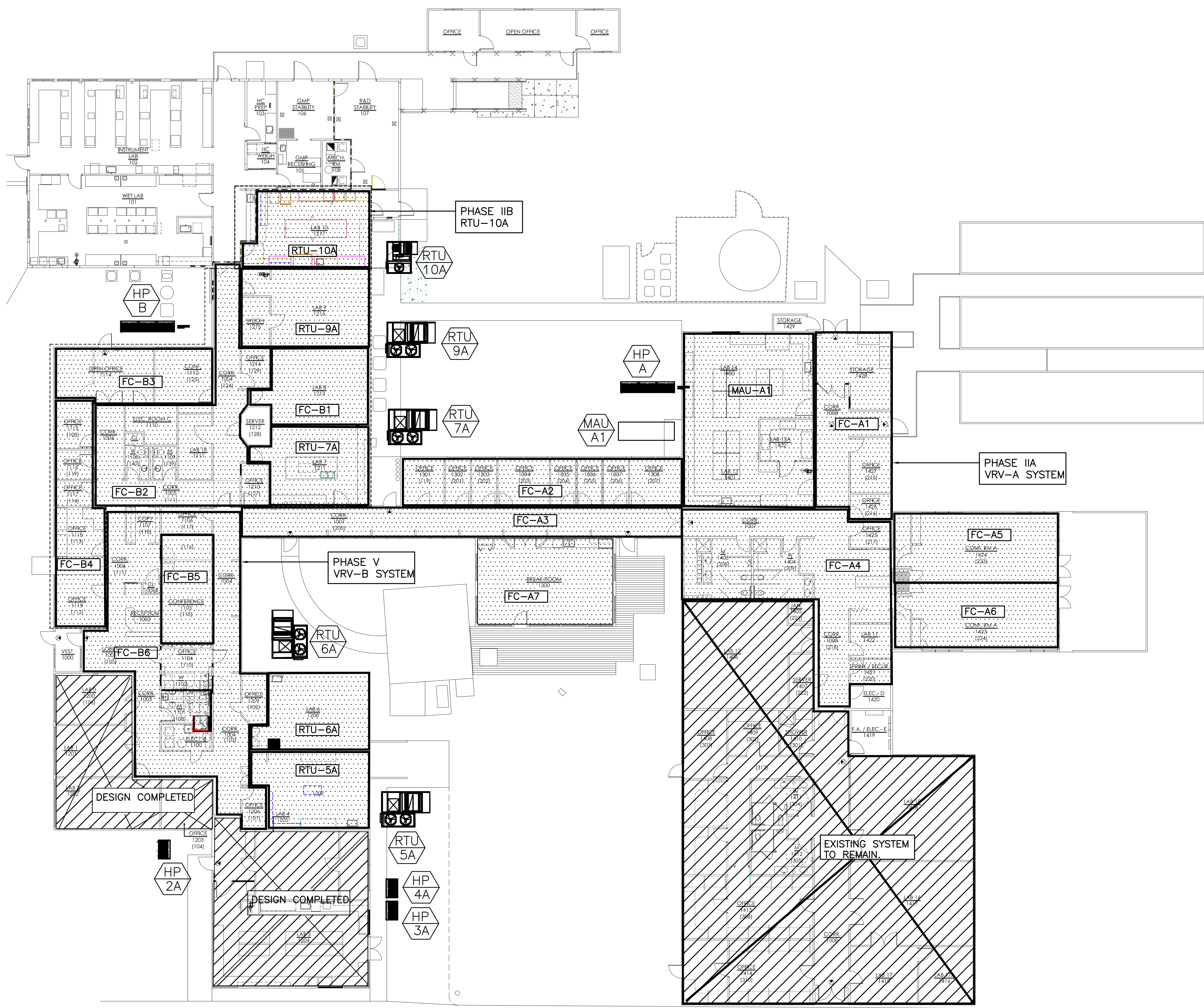


PLAN REVIEW APPROVAL STAMP



VRV-A	Size	
HP-A	28	Tons
MAU-A1 (+28.5 KW HTR)	12	Tons
FC-A1	2.5	Tons
FC-A2	2.5	Tons
FC-A3	2	Tons
FC-A4	1.5	Tons
FC-A5	3.5	Tons
FC-A6	3.5	Tons
FC-A7	2.5	Tons
Other equipment:		
Fume Hood Fan	1500	CFM
VRV-B	Size	
HP-B	24	Tons
FC-B1	6	Tons
FC-B2	2	Tons
FC-B3	2	Tons
FC-B4	3	Tons
FC-B5	2	Tons
FC-B6	3	Tons
Total:	18	Tons
LAB 10	Size	
RTU-10A	3	Tons
Other equipment:		
Exhaust Fan	1800	CFM
LAB 9	Size	
RTU-9A	7.5	Tons
Other equipment:		
Exhaust Fan	1800	CFM
LAB 7	Size	
RTU-7A	7.5	Tons
Other equipment:		
Exhaust Fan	1800	CFM
LAB 6	Size	
RTU-6A	10	Tons
Other equipment:		
Exhaust Fan	1800	CFM
Exhaust Fan	1800	CFM
LAB 5	Size	
RTU-5A	7.5	Tons
Other equipment:		
Exhaust Fan	1800	CFM
SYSTEM DESCRIPTION		
VRV	Variable Refrigerant Volume System	
HP	Heat Pump with Heat Recovery	
FC	Ducted Fan Coil	
WU	Ductless Wall Mounted Unit	
MAU	Make-up air unit	
RTU	Roof Top Packaged unit	

BEND RESEARCH, INC.
 TUMALO - MECHANICAL UPGRADES

BCA
BLAISE CACCIOLA
 ARCHITECT
 1465 SW Knoll Avenue, Suite 250
 Bend, OR 97702
 Phone: 541.728.0375
 www.BCA-Architect.com

BEND RESEARCH, INC.
 BRIT-TUMALO
 LAB 3 UPGRADES
 64550 RESEARCH RD.
 BEND, OREGON 97701

DRAWN / CHECKED:
 ISSUED:

1 BRIT HVAC REPLACEMENT/SYSTEM PLAN
 M1.0 SCALE: NTS