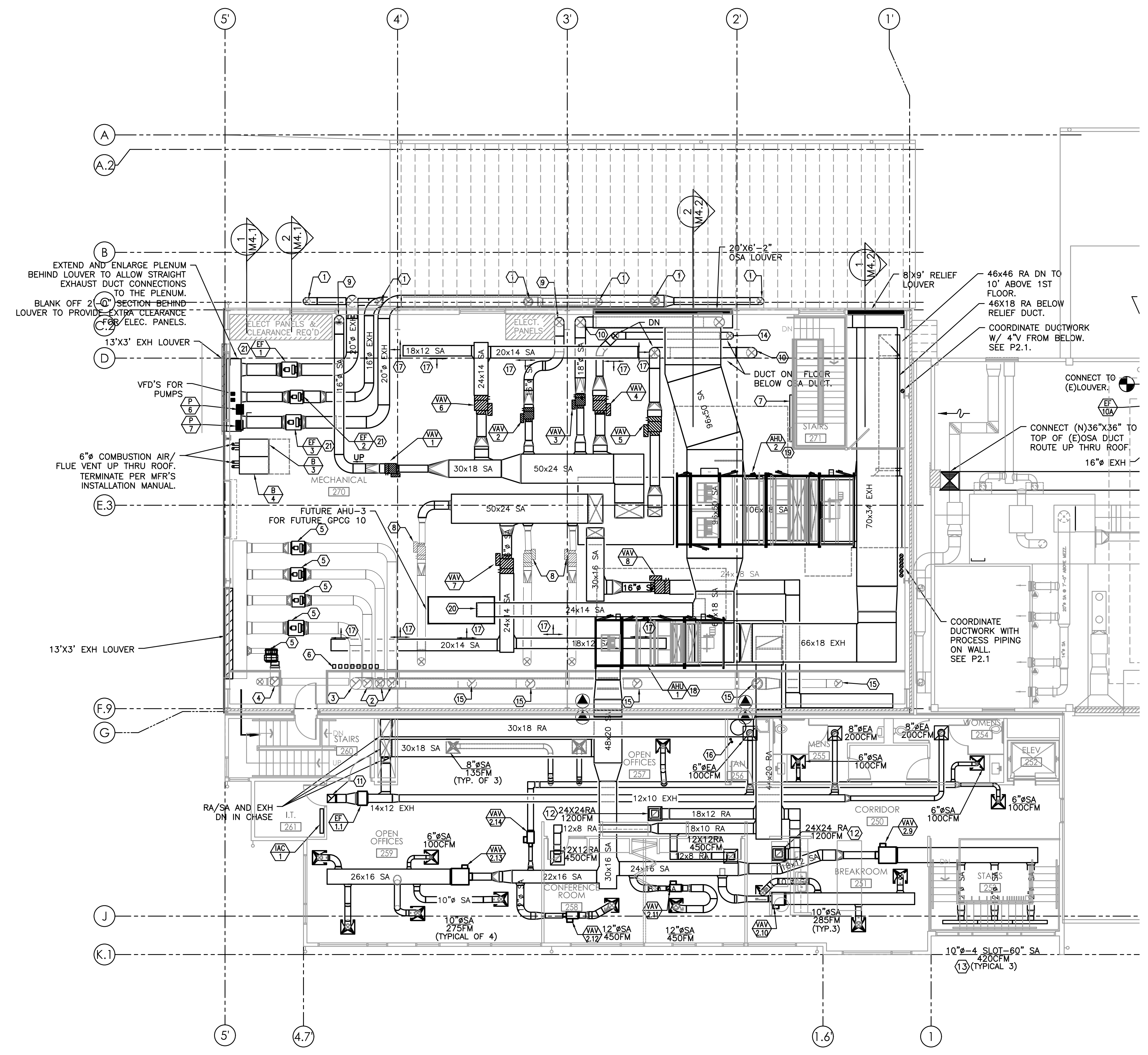


PLAN REVIEW APPROVAL STAMP



- GENERAL NOTES:**
- DUCT SHOWN IN LIGHT LAYER ARE FOR FUTURE SUITES AND ARE SHOWN FOR REFERENCE ONLY.
 - SEE 8/M6.1 FOR VAV INSTALLATION DETAIL.
 - SEE 1/M6.3 FOR DUCT SUPPORT.
 - SEE 2/M6.3 FOR PIPE SUPPORT.
 - SEE 3/M6.3 FOR PEX PIPE SUPPORT.
 - SEE 4/M6.3 SEISMIC DUCT SUPPORT.
 - SEE 5/M6.5 SEISMIC PIPE SUPPORT.
 - RUN DUCT AS HIGH AS POSSIBLE AND RUN PARALLEL WITH THE SLOPE OF ROOF TO MAXIMIZE HEAD ROOM.
- KEYED NOTES:**
- 12" EA DN THRU METAL ROOF.
 - FUTURE 16" EXH DN. SHOWN FOR REFERENCE ONLY.
 - FUTURE 22" EXH DN. SHOWN FOR REFERENCE ONLY.
 - FUTURE 20" EXH DN. SHOWN FOR REFERENCE ONLY.
 - FUTURE EXH FAN. SHOWN FOR REFERENCE ONLY.
 - VFD'S FOR EXH FANS, TOTAL OF 8 (INCLUDING FUTURE VFD'S)
 - SIEMENS DDC PANELS.
 - FUTURE VAV BOX. SHOWN FOR REFERENCE ONLY.
 - 16" SA DN THRU MEZZ FLOOR.
 - 18" DN THRU MEZZ FLOOR.
 - 14X14 EA UP THRU ROOF TO RELIEF VENT.
 - EGGCRATE RA GRILLE.
 - LINEAR SLOT, PRICE SDB SERIES WITH PLENUM.
 - 12" SA DN THRU MEZZ FLOOR.
 - FUTURE EXH DN TO HEPA UNITS. (SHOWN FOR REFERENCE ONLY.)
 - 3" PP COMBUSTION AIR AND VENT UP THRU ROOF.
 - 12X10 SA 500CFM
 - SEE 5/M6.2 FOR AHU-1 DETAIL AND SECTION.
 - SEE 4/M6.2 FOR AHU-2 DETAIL AND SECTION.
 - OSA DUCT CAPPED FOR FUTURE AHU.
 - SEE 4/M6.1 FOR INSTALLATION.

1 MECHANICAL SECOND FLOOR - ADDITION
 M2.2A 1/8"=1'-0"

BEND RESEARCH, INC
 CORPORATE PLACE FACILITY - BUILDING EXPANSION NORTH

BCA
BLAISE CACCIOLA
 ARCHITECT
 1465 SW Knoll Avenue, Suite 250
 Bend, OR 97702
 Phone: 541.728.0375
 www.BCA-Architect.com

DRAWN/ CHECKED: TB
 ISSUES / REVISIONS:

MECH SECOND FLOOR-
 EXISTING BUILDING
M2.2A