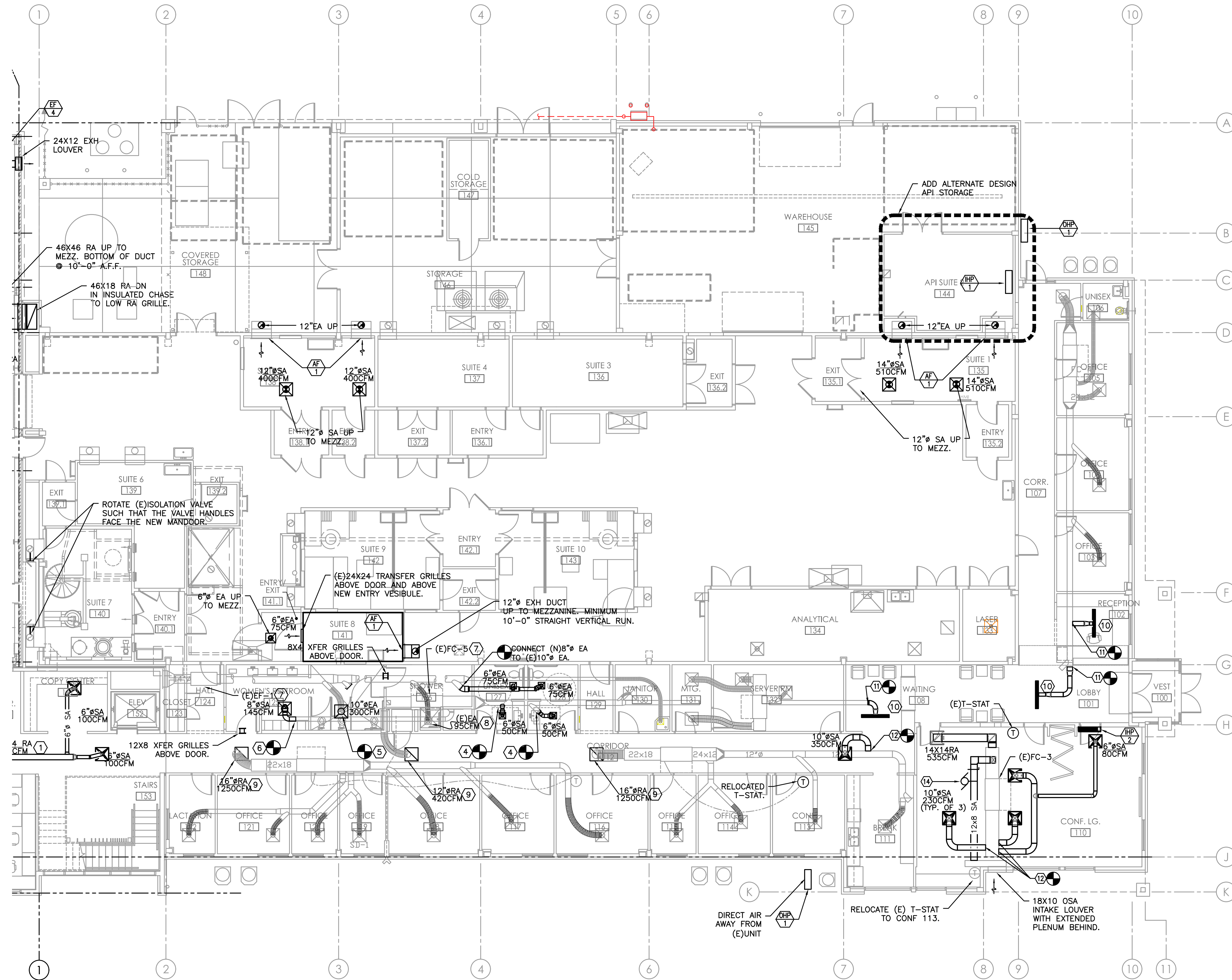


PLAN REVIEW APPROVAL STAMP



- GENERAL NOTES:**
1. DUCT SHOWN IN LIGHT LAYER ARE FOR FUTURE SUITES AND ARE SHOWN FOR REFERENCE ONLY.
 2. SEE (8/M6.1) FOR VAV INSTALLATION DETAIL.
 3. SEE (1/M6.3) FOR DUCT SUPPORT.
 4. SEE (2/M6.3) FOR PIPE SUPPORT.
 5. SEE (3/M6.3) FOR PEX PIPE SUPPORT.
 6. SEE (4/M6.3) SEISMIC DUCT SUPPORT.
 7. SEE (5/M6.5) SEISMIC PIPE SUPPORT.
 8. RUN DUCT AS HIGH AS POSSIBLE AND RUN PARALLEL WITH THE SLOPE OF ROOF TO MAXIMIZE HEAD ROOM.
- KEYED NOTES:**
1. 12" EA DN THRU METAL ROOF.
 2. FUTURE 16" EXH DN. SHOWN FOR REFERENCE ONLY.
 3. FUTURE 22" EXH DN. SHOWN FOR REFERENCE ONLY.
 4. FUTURE 20" EXH DN. SHOWN FOR REFERENCE ONLY.
 5. FUTURE EXH FAN. SHOWN FOR REFERENCE ONLY.
 6. VFD'S FOR EXH FANS, TOTAL OF 8 (INCLUDING FUTURE VFD'S).
 7. SIEMEN'S DDC PANELS.
 8. FUTURE VAV BOX. SHOWN FOR REFERENCE ONLY.
 9. 16" SA DN THRU MEZZ FLOOR.
 10. 18" DN THRU MEZZ FLOOR.
 11. 14X14 EA UP THRU ROOF TO RELIEF VENT.
 12. EGGRATE RA GRILLE.
 13. LINEAR SLOT, PRICE SDB SERIES WITH PLENUM.
 14. 12" SA DN THRU MEZZ FLOOR.
 15. FUTURE EXH DN TO HEPA UNITS. (SHOWN FOR REFERENCE ONLY.)
 16. 3" PIP COMBUSTION AIR AND VENT UP THRU ROOF.
 17. 12X10 SA 500CFM.
 18. SEE 5/M6.2 FOR AHU-1 DETAIL AND SECTION.
 19. SEE 4/M6.2 FOR AHU-2 DETAIL AND SECTION.
 20. OSA DUCT CAPPED FOR FUTURE AHU.
 21. SEE 4/M6.1 FOR INSTALLATION.

 **1 MECHANICAL FIRST FLOOR PLAN – EXISTING BUILDING**
M2.1B 1/8"=1'-0"

BEND RESEARCH, INC
CORPORATE PLACE FACILITY - BUILDING EXPANSION NORTH



BLAISE CACCIOLA
ARCHITECT
1465 SW Knoll Avenue, Suite 250
Bend, OR 97702
Phone: 541.728.0375
www.BCA-Architect.com

DRAWN/ CHECKED: TB

ISSUES / REVISIONS:

MECH FIRST FLOOR PLAN-
EXISTING BUILDING

M2.1B