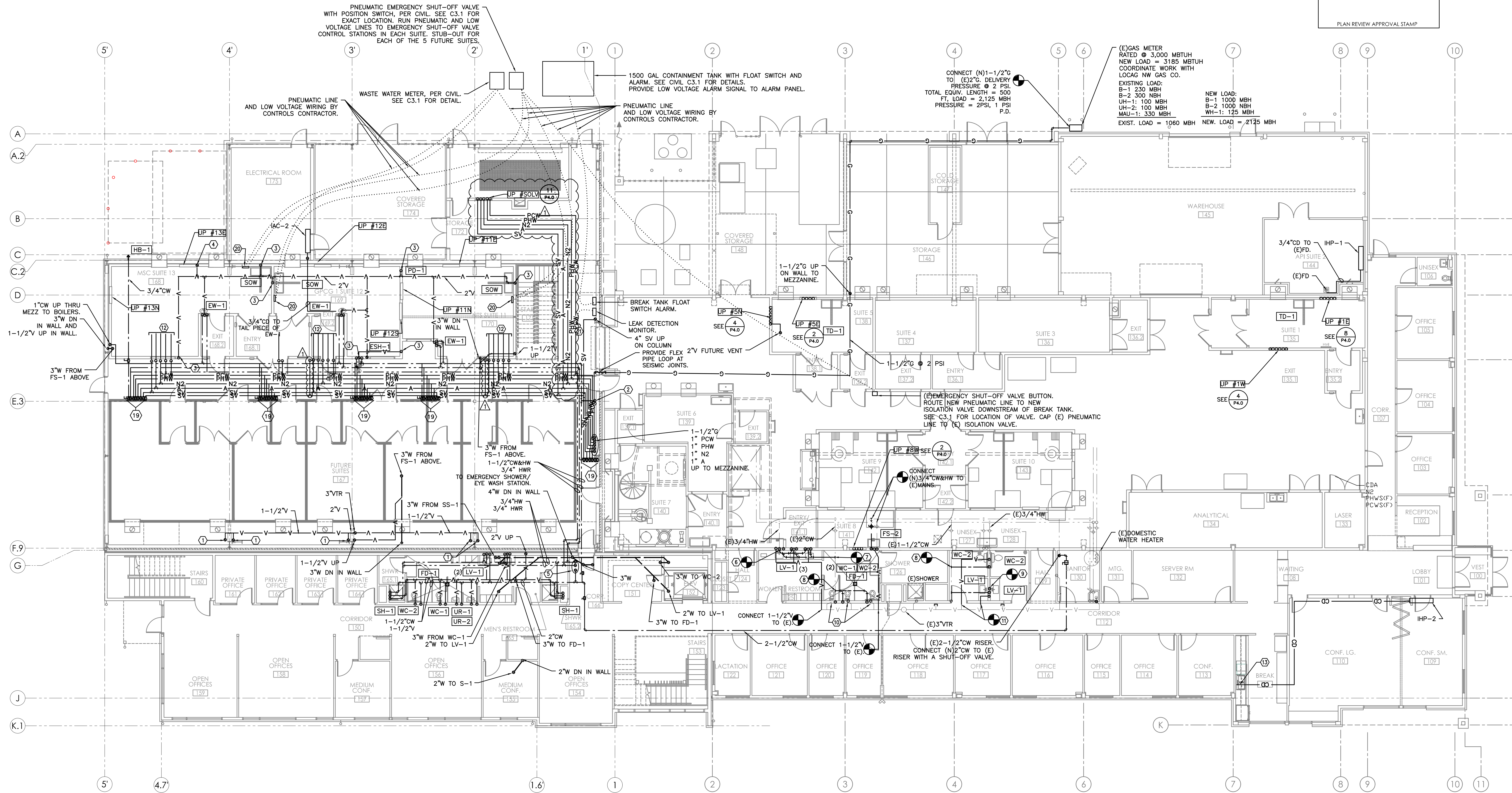


PLAN REVIEW APPROVAL STAMP

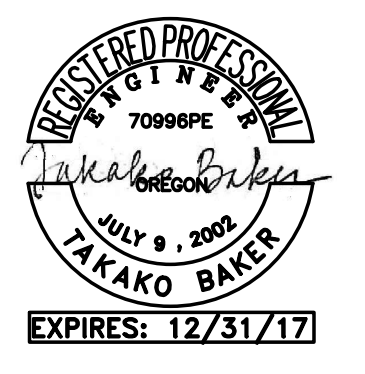


1 FIRST FLOOR PLUMBING PLAN
 P2.0 1/8"=1'-0"

- KEYED NOTES:**
1. PROVIDE 1-1/2"V TO 3'-0" A.F.F. FOR FUTURE CONNECTION TO TRENCH DRAINS (TD-1).
 2. CW DN ON WALL TRAP PRIMER MANIFOLD. MOUNT LOW ON WALL.
 3. 1-1/2"V FROM BELOW.
 4. 2"V UP.
 5. 1-1/2"CW, 1-1/2"HW, AND 3/4"HW UP.
 6. CONNECT (N)3/4"HW TO EXISTING AND FEED (3)LAV'S.
 7. CONNECT (N)3/4"CW TO EXISTING AND FEED (3)LAV'S.
 8. CONNECT (N)1-1/2"CW TO (E).
 9. CONNECT (N)3/4"HW TO (E) AND CONNECT TO (2)LAV'S.
 10. MODIFY (E)VENT PIPING AND CONNECT TO NEW FIXTURES.
 11. EXTEND (E)VENT AND CONNECT TO NEW FIXTURES.
 12. SEE SUITE DETAIL ON SHEET P4.0 FOR CONTINUATION.
 13. CONNECT 3/4" CD TO TAIL PIECE OF (E) SINK.
 14. MODIFY (E)PIPING TO SUITE 1 AND RE-ROUTE IN NEW WALL TO NEW UTILITY PANEL.
 15. 3/4" PCW&PHW, 1/2" N2, 1/2"A AND 2" SV DN THRU MEZZANINE FLOOR TO NEW UTILITY PANEL IN SUITE 1.
 16. CONNECT (N)3/4"PCW&PHW, 1/2"N2, 1/2"A AND 2"SV TO (E) BRANCHES.
 17. 3/4" PCW&PHW, 1/2" N2, 1/2" A DN IN WALL TO NEW UTILITY PANEL IN SUITE 5.
 18. 2" FUTURE VENT FROM UTILITY PANEL BELOW. TERMINATE 3" ABOVE FINISHED FLOOR WITH SANITARY FITTING.
 19. STUB-OUT FOR FUTURE SUITE. SEE SHEET P4.0 FOR DETAILS.
 20. EMERGENCY SHUT-OFF VALVE CONTROL STATION. SEE 2/P6.1 FOR DETAILS.
 21. LEAK DETECTION CABLE FROM DOUBLE CONTAINMENT PROCESS PIPE.

- GENERAL NOTES:**
1. SEE P4.0 FOR PROCESS PIPING SIZING, LAYOUT AND DETAILS.
 2. SEE 1/P6.2 FOR SEISMIC PIPE SUPPORT.
 3. SEE 6/P6.1 FOR NON-SEISMIC PIPE SUPPORT.
 4. UP-#XX
 E, W, N, OR S EXPOSURE
 SUITE #
 5. SEE 2/P6.2 CW & HW PIPING DIAGRAM
- FOR VALVE LOCATIONS AND BRANCH PIPE SIZES.
6. EMERGENCY SHUT-OFF VALVE, PNEUMATIC ACTUATOR AND VALVE POSITION SWITCH ARE PROVIDED BY CIVIL. COORDINATE LV, WIRING, PNEUMATIC LINES, RELAYS, CONTROL PANEL, ETC. WITH CONTROLS CONTRACTOR.
 7. BREAK TANK AND FLOAT SWITCH ARE PROVIDED BY CIVIL. COORDINATE LV WIRING TO "BREAK TANK FLOAT SWITCH ALARM" STATION WITH CONTROLS CONTRACTOR.
 8. WASTE WATER METER IS PROVIDED BY CIVIL. COORDINATE LV WIRING TO "EMERGENCY SHUT-OFF VALVE CONTROL STATION" WITH CONTROLS CONTRACTOR.
 9. COORDINATE ANY L.V. WIRING REQUIRED FOR DOUBLE CONTAINMENT LEAK DETECTION SYSTEM WITH CONTROLS CONTRACTOR.

BEND RESEARCH, INC
 CORPORATE PLACE FACILITY - BUILDING EXPANSION NORTH



DRAWN / CHECKED: TB

ISSUES / REVISIONS:

BID SET	07/21/2017
PH 2 - GEN BLDG	07/28/2017
REV 1	09/13/2017

FIRST FLOOR PLUMBING PLAN

P2.0