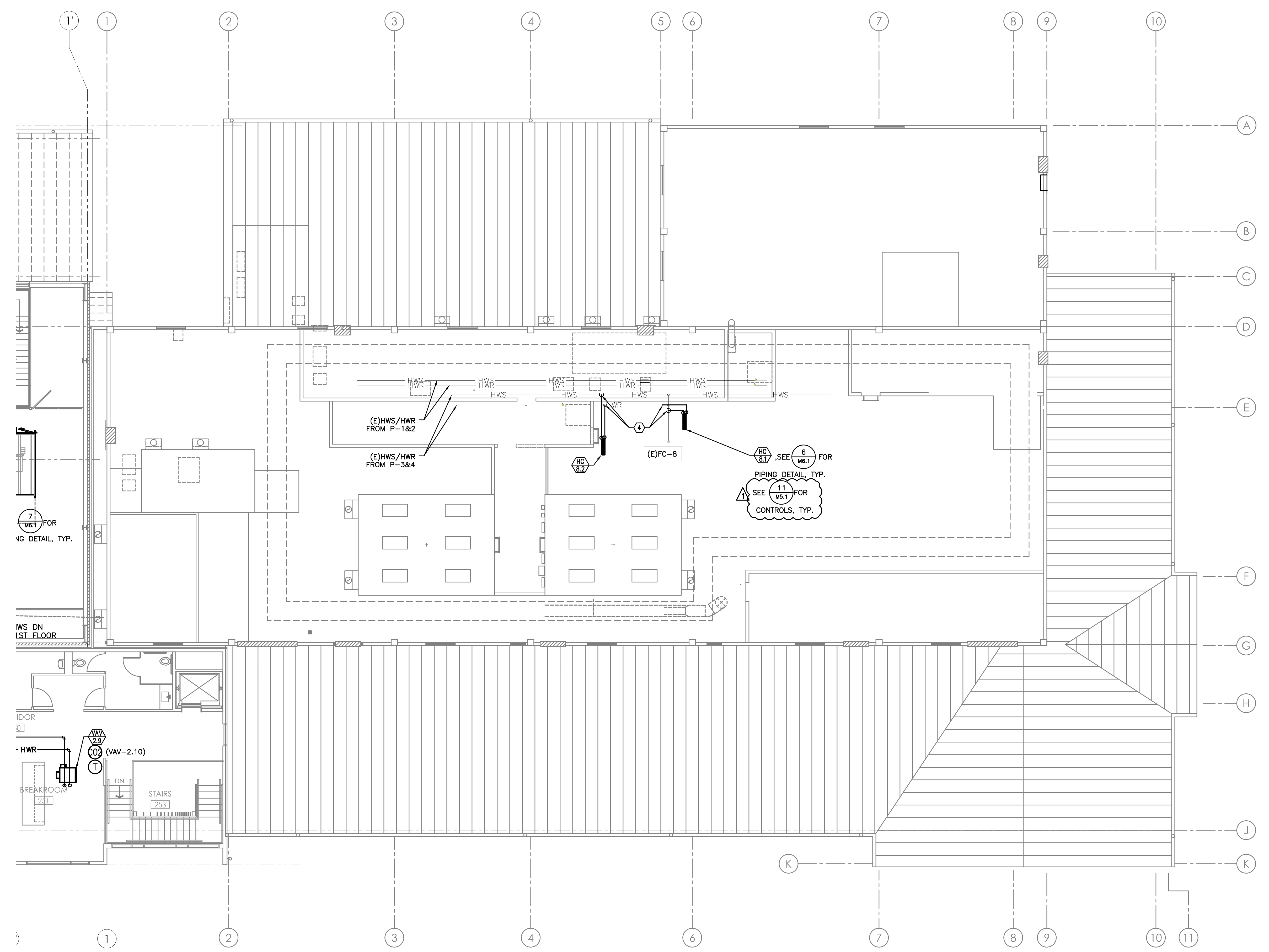
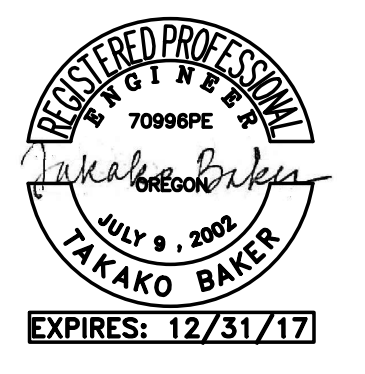


PLAN REVIEW APPROVAL STAMP

- GENERAL NOTES:**
- CONTRACTOR TO COORDINATE PIPE ROUTING WITH OTHER DISCIPLINES.
 - SEE 1/MB.4 FOR HW PIPING ISODRAM.
 - SEE M1.0 FOR TEMP AND SENSOR LOCATIONS IN THE SUITES.
- KEYED NOTES:**
- FUTURE VAV BOX.
 - 3/4" HWS/HWR CAPPED WITH SHUT-OFF VALVE FOR FUTURE.
 - 1-1/4" HWS/HWR CAPPED WITH SHUT-OFF VALVE FOR FUTURE.
 - CONNECT (N)3/4" HWS/HWR TO (E) MAINS.
 - T/A SERIES BALANCE VALVE. SEE PIPING SCHEMATIC ON SHEET MP3.0 FOR GPM SETTING.
 - T/A SERIES 794 DIFFERENTIAL PRESSURE CONTROLLER.



BEND RESEARCH, INC
 CORPORATE PLACE FACILITY - BUILDING EXPANSION NORTH



BCA
BLAISE CACCIOLA
 ARCHITECT
 1465 SW Knoll Avenue, Suite 250
 Bend, OR 97702
 Phone: 541.728.0375
 www.BCA-Architect.com

DRAWN/ CHECKED: TB
 ISSUES / REVISIONS:
 BID SET 07/21/2017
 PH 2 - GEN BLDG 07/28/2017
 REV 1 09/13/2017

1 MECHANICAL PIPING SECOND FLOOR PLAN - EXISTING BUILDING
 MP2.2B/ 1/8"=1'-0"

MECH PIPING 2ND FLOOR-
 EXISTING BUILDING
MP2.2B