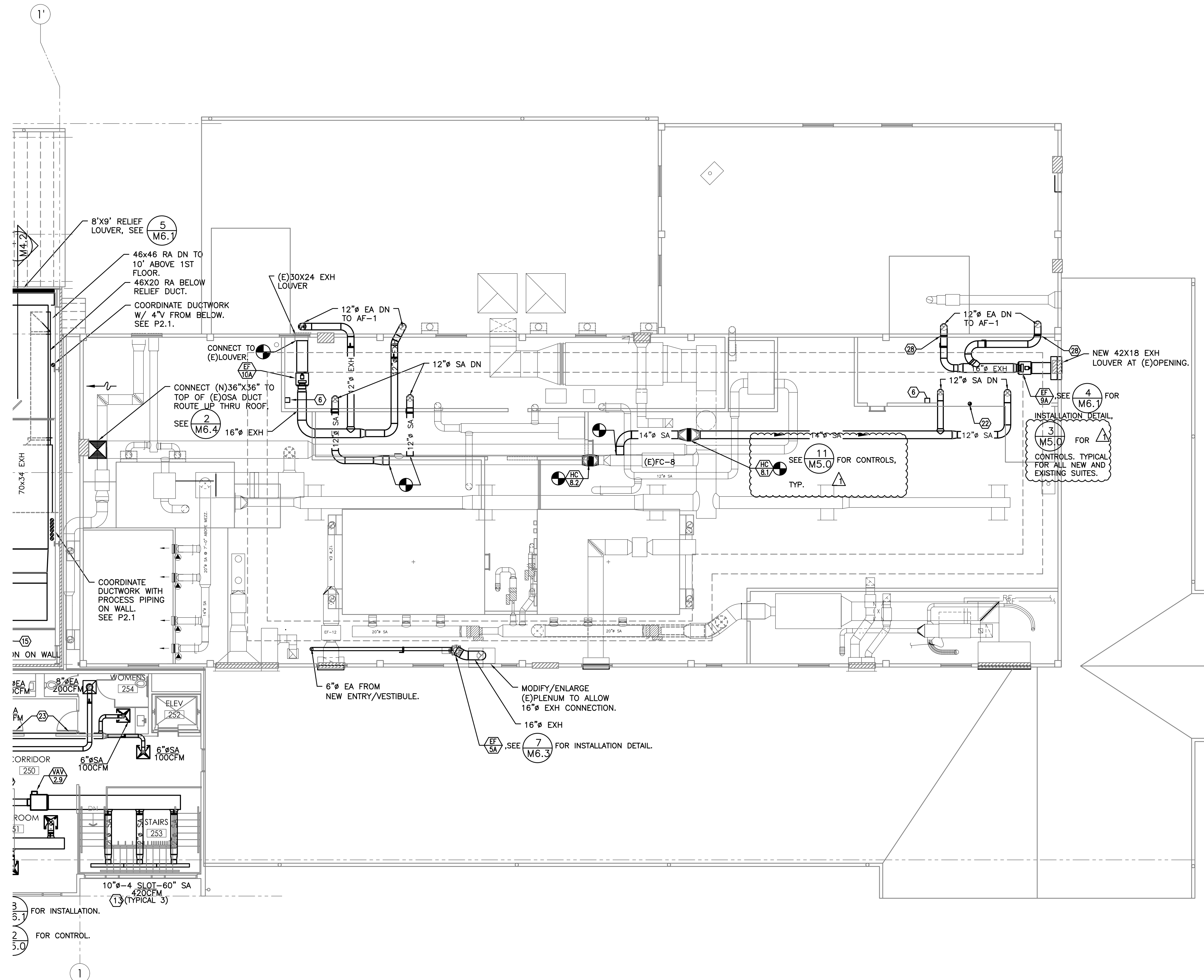
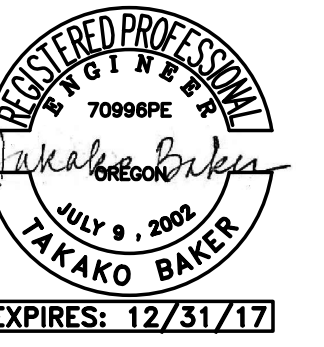


PLAN REVIEW APPROVAL STAMP



- GENERAL NOTES:**
- DUCT SHOWN IN LIGHT LAYER ARE FOR FUTURE SUITES AND ARE SHOWN FOR REFERENCE ONLY.
 - SEE (8/M6.1) FOR VAV INSTALLATION DETAIL.
 - SEE (1/M6.3) FOR DUCT SUPPORT.
 - SEE (2/M6.3) FOR PIPE SUPPORT.
 - SEE (3/M6.3) FOR PEX PIPE SUPPORT.
 - SEE (4/M6.3) SEISMIC DUCT SUPPORT.
 - SEE (5/M6.5) SEISMIC PIPE SUPPORT.
 - RUN DUCT AS HIGH AS POSSIBLE AND RUN PARALLEL WITH THE SLOPE OF ROOF TO MAXIMIZE HEAD ROOM.
 - SEE M1.0 FOR PROCESS SUITE TEMP/PRESSURE SENSOR LOCATIONS. SEE MP MECHANICAL PIPING PLAN FOR OFFICE BUILDING 1-STAT AND CO2 SENSOR LOCATIONS.
- KEYED NOTES:**
- 12" EA DN THRU METAL ROOF.
 - FUTURE 16" EXH DN. SHOWN FOR REFERENCE ONLY.
 - FUTURE 22" EXH DN. SHOWN FOR REFERENCE ONLY.
 - FUTURE 20" EXH DN. SHOWN FOR REFERENCE ONLY.
 - FUTURE EXH FAN. SHOWN FOR REFERENCE ONLY.
 - VFD(S) FOR EXH FAN(S).
 - SIEMENS DDC PANELS.
 - FUTURE VAV BOX. SHOWN FOR REFERENCE ONLY.
 - 16" SA DN THRU MEZZ FLOOR.
 - 18" DN THRU MEZZ FLOOR.
 - 14x14 EA UP THRU ROOF TO RELIEF VENT.
 - ECCORATE RA GRILLE.
 - LINEAR SLOT, PRICE SDB SERIES WITH PLENUM.
 - 12" SA DN THRU MEZZ FLOOR.
 - FUTURE EXH DN TO HEPA UNITS. (SHOWN FOR REFERENCE ONLY.)
 - 3" PP COMBUSTION AIR AND VENT UP THRU ROOF WITH CONCENTRIC FITTING. SEE 9/M6.1 FOR DETAIL.
 - 12X10 SA 500CFM
 - SEE 5/M6.2 FOR AHU-1 DETAIL AND SECTION. SEE 1/M5.0 FOR CONTROL.
 - SEE 4/M6.2 FOR AHU-2 DETAIL AND SECTION. SEE 1/5.0 FOR CONTROL.
 - OSA DUCT CAPPED FOR FUTURE AHU.
 - SEE 4/M6.1 FOR INSTALLATION & 3/M5.0 FOR CONTROLS.
 - 6" 26 GA S.S. EXH DUCT FROM SUITE 1 BELOW. ROUTE UP THRU ROOF AND TERMINATE 24" ABOVE ROOF WITH A GOOSE-NECK.
 - UNDERCUT DOOR BY 3/4".
 - CONTROL CABINET FOR PRESSURE SENSORS.
 - CONTROL CABINET FOR O2/ VOC SENSOR TRANSMITTERS.
 - INSTALL FLEX DUCT AT SEISMIC JOINT PENETRATION.
 - SEE 4/M6.1 FOR INSTALLATION. SEE 10/M5.0 FOR CONTROLS.
 - THRU-PENETRATION. ALL EXH DUCTWORK FOR SUITE 1 TO BE MIN. 26 GAUGE. SEAL EXTERIOR WALL PENETRATIONS WITH FIRE-STOP AND PRESSURE TEST EXHAUST DUCTWORK PER OSSC 2014, SECTION 713.3.1.2.

BEND RESEARCH, INC
 CORPORATE PLACE FACILITY - BUILDING EXPANSION NORTH



BCA
BLAISE CACCIOLA
 ARCHITECT
 1465 SW Knoll Avenue, Suite 250
 Bend, OR 97702
 Phone: 541.728.0375
 www.BCA-Architect.com

1 MECHANICAL SECOND FLOOR PLAN - EXISTING BUILDING
 M2.2B 1/8"=1'-0"

DRAWN / CHECKED: TB
 ISSUES / REVISIONS:
 BID SET 07/21/2017
 PH 2 - GEN BLDG 07/28/2017
 REV 1 09/13/2017

MECH 2ND FLOOR - EXISTING BUILDING
M2.2B