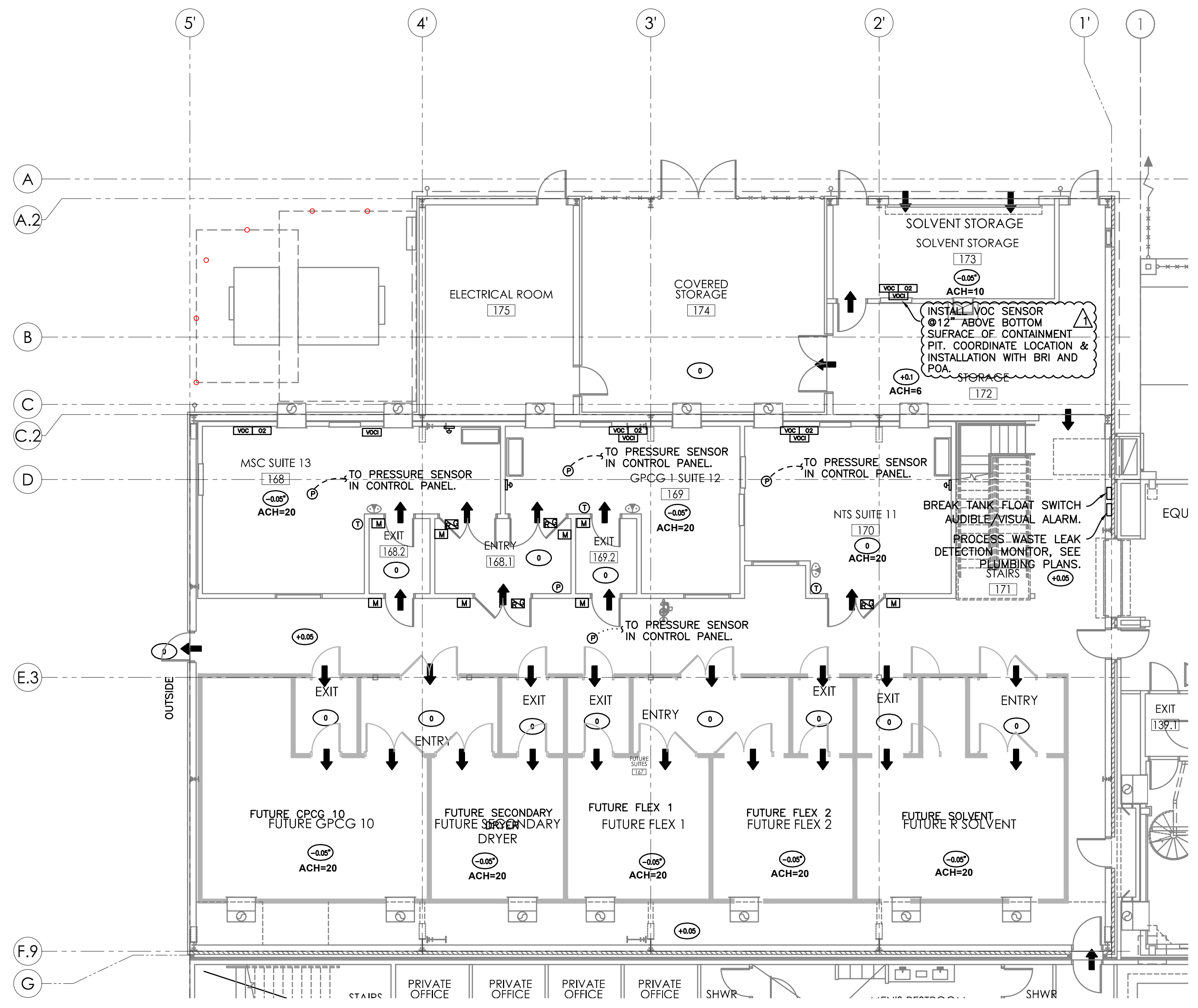
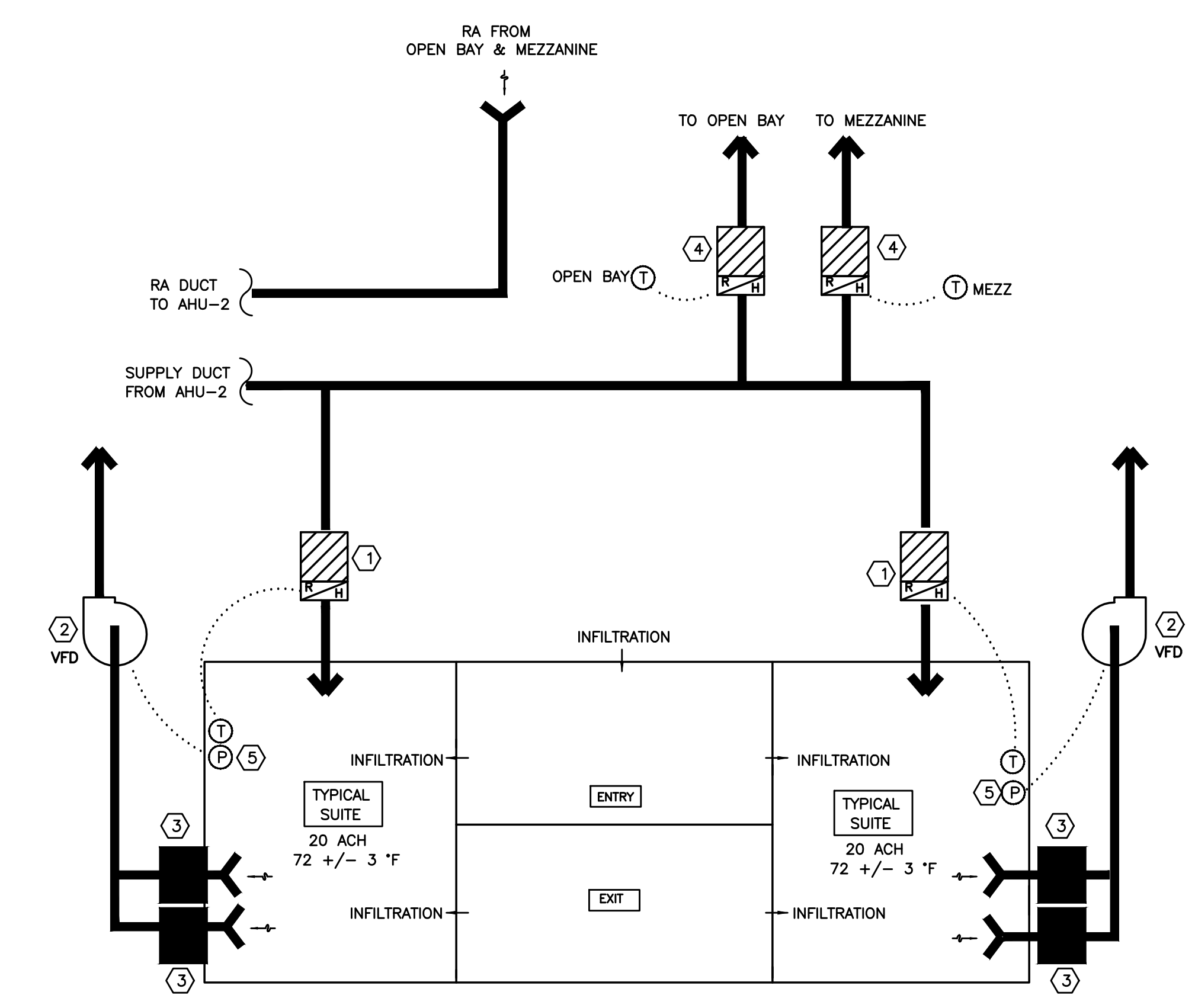


PLAN REVIEW APPROVAL STAMP

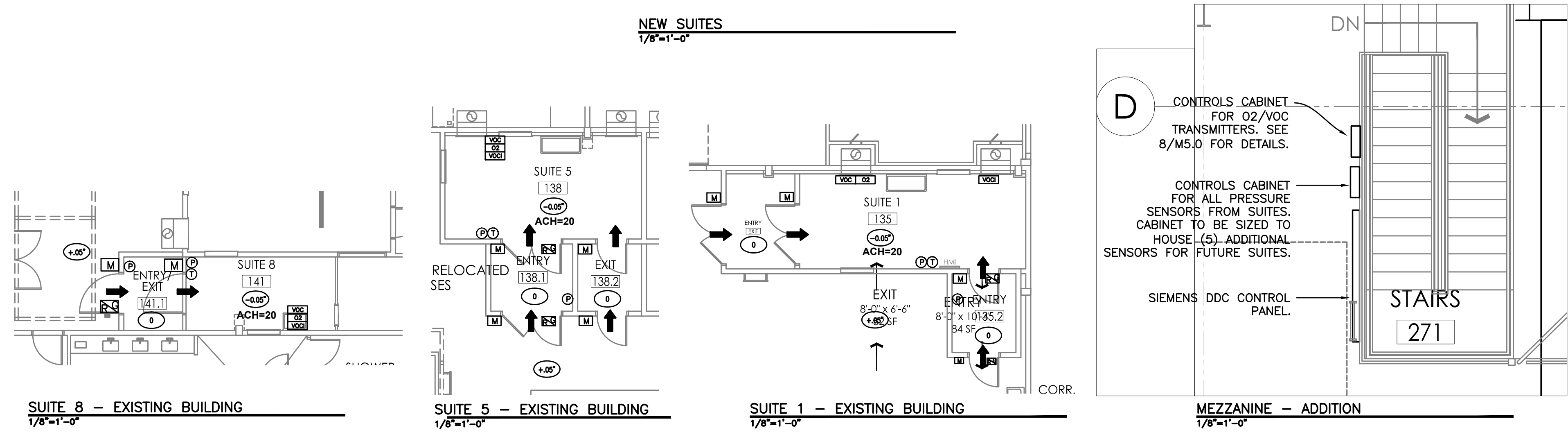


- GENERAL NOTES:**
- SUPPLY CFM TO BE BALANCED WITHIN +/- 10% UNLESS OTHERWISE NOTED.
 - EXHAUST GRILLE CFM VALUES ARE APPROXIMATE. CONTRACTOR TO VARY EXHAUST SETPOINT BASED ON ROOM PRESSURIZATION.
 - SEE SHEET M5.0 FOR CONTROLS DIAGRAMS.

- LEGEND:**
- (T) - TEMPERATURE SENSOR (TO DDC)
 - (P) - SPACE PRESSURE PICK UP AT CEILING (TO DDC)
LOCATE ALL PRESSURE SENSORS IN A CONTROL CABINET, ADJACENT TO SIEMENS CONTROLS PANEL IN THE MEZZANINE.
 - (R) - RED /GREEN PRESSURE INDICATOR LIGHT(FROM DDC)
PROVIDE LED RED AND GREEN LIGHTS, EACH LIGHT TO RECEIVE SIGNAL FROM DDC. SEE SPECIFICATION 230 990 FOR SEQUENCE OF OPERATIONS. COORDINATE PRODUCT PROCUREMENT WITH OWNER.
 - (M) - MAGNEHELIC PRESSURE GAUGE (NO CONTROLS, SEE 1/M6.1 FOR INSTALLATION DETAIL)
 - (O2) - O2 SENSOR @ 5'-0" A.F.F. FURNISHED AND INSTALLED BY CONTROLS CONTRACTOR. 61-0140RK-06, BRI STORE STOCK PART # 15-F302-000-02 & 57-1064RK-01. COORDINATE PRODUCT PROCUREMENT AND INSTALLATION WITH OWNER AND "POWER OF AUTOMATICS". SEE 7/M5.0 & 8/M5.0 FOR INSTALLATION DETAILS. MAKE PROVISIONS FOR INSTALLATION IN FUTURE SUITES.
 - (VOC) -VOC SENSOR. FURNISHED AND INSTALLED BY CONTROLS CONTRACTOR. 61-0140RK-06, BRI STORE STOCK # 15-F279-00-02 & 57-1053RK. COORDINATE PRODUCT PROCUREMENT AND INSTALLATION WITH OWNER AND "POWER OF AUTOMATICS". SEE 7/M5.0 & 8/M5.0 FOR INSTALLATION DETAILS. MAKE PROVISIONS FOR INSTALLATION IN FUTURE SUITES.
 - (VOC1) - VOC INDICATOR LIGHTS INSTALLED HIGH ON WALL. FURNISHED & INSTALLED BY CONTROLS CONTRACTOR. COORDINATE PRODUCT PROCUREMENT AND INSTALLATION WITH OWNER AND "POWER OF AUTOMATICS". SEE 7/M5.0 & 8/M5.0 FOR INSTALLATION DETAILS. MAKE PROVISIONS FOR INSTALLATION IN FUTURE SUITES.
 - (D) - EMERGENCY SHUT-OFF VALVE CONTROL PANEL. SEE 2/P6.1 FOR DETAILS. COORDINATE WORK WITH OWNER, PLUMBING CONTRACTOR, AND CIVIL. MAKE PROVISIONS FOR INSTALLATION IN FUTURE SUITES.



- KEYED NOTES:**
- VAV BOXES WITH REHEAT COIL: SET VAV DAMPER AT CONSTANT AIRFLOW TO PROVIDE 20 ACH TO SUITE. HW VALVE TO MODULATE TO MAINTAIN SPACE TEMP.
 - EXHAUST FAN W/ VFD: CONTROL FAN SPEED TO MAINTAIN SPACE PRESSURE IN SUITE.
 - BAG-IN/BAG-OUT HEPA EXHAUST UNIT
 - VAV BOX WITH REHEAT COIL: VAV DAMPER AND HW VALVE MODULATE TO MAINTAIN SPACE TEMP.
 - SET TO -0.1" W.G. RELATIVE TO OPEN BAY.



1 HVAC PRESSURE & INSTRUMENTATION DIAGRAM
 M1.0 1/8"=1'-0"

2 AIRFLOW DIAGRAM
 M1.0 NONE

ROOM NAME	ACH	100% EXHAUST	TEMPERATURE	SPACE PRESSURE *	EQUIPMENT LOAD
MSC	20	YES	72 +/- 3 °F	-0.10"	20,130 MBH
GPCG 1	20	YES	72 +/- 3 °F	-0.10"	52,000 MBH
NTS	20	YES	72 +/- 3 °F	0	55,127 MBH
CLEAN EQUIPT STORAGE	6	NO	72 +/- 5 °F	POSITIVE	-
SOLVENT STORAGE	10	YES	UNCONDITIONED	NEGATIVE	-
OPEN BAY	6	NO	72 +/- 5 °F	+0.05"	16500 MBH
MEZZANINE	-	NO	72 +/- 5 °F	+0.05"	20642 MBH
FLEX 1 (FUTURE)	20	YES	72 +/- 3 °F	-0.10"	12000 MBH
FLEX 2 (FUTURE)	20	YES	72 +/- 3 °F	-0.10"	12000 MBH
SECONDARY DRYER (FUTURE)	20	YES	72 +/- 3 °F	-0.10"	24000 MBH
R SOLVENT (FUTURE)	20	YES	72 +/- 3 °F	-0.10"	41600 MBH
EXIT / ENTRY	**	NO	72 +/- 5 °F	NEGATIVE	0 MBH
GPCG 10 (FUTURE)	20	YES	72 +/- 3 °F	-0.10"	***

* RELATIVE TO OUTSIDE
 ** NONE REQUIRED TO MAINTAIN SPACE PRESSURE
 *** A DEDICATED HVAC WILL BE PROVIDED IN THE FUTURE.

3 BASIS OF DESIGN
 M1.0 NONE

BEND RESEARCH, INC.
 CORPORATE PLACE FACILITY - BUILDING EXPANSION NORTH

REGISTERED PROFESSIONAL ARCHITECT
 TAKAKO BAKER
 JULY 8, 2008
 EXPIRES: 12/31/17

BCA
BLAISE CACCIOLA
 ARCHITECT
 1465 SW Knoll Avenue, Suite 250
 Bend, OR 97702
 Phone: 541.728.0375
 www.BCA-Architect.com

DRAWN/ CHECKED: TB
 ISSUES / REVISIONS:
 BID SET 07/21/2017
 PH 2 - GEN BLDG 07/28/2017
 REV 1 09/13/2017

PRESSURE CASCADE DIAGRAM

M1.0